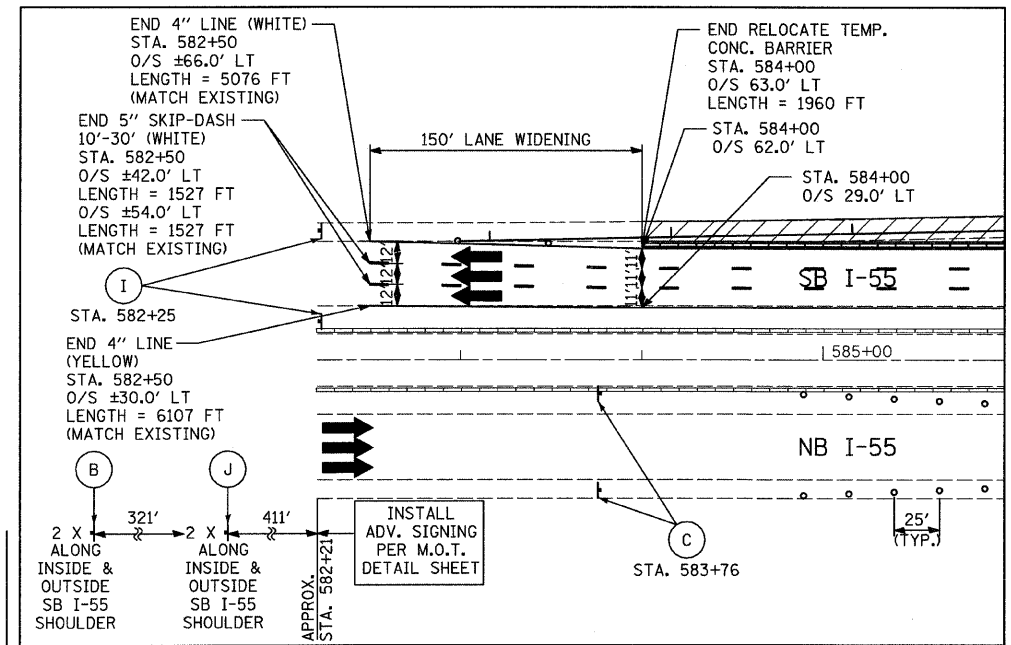
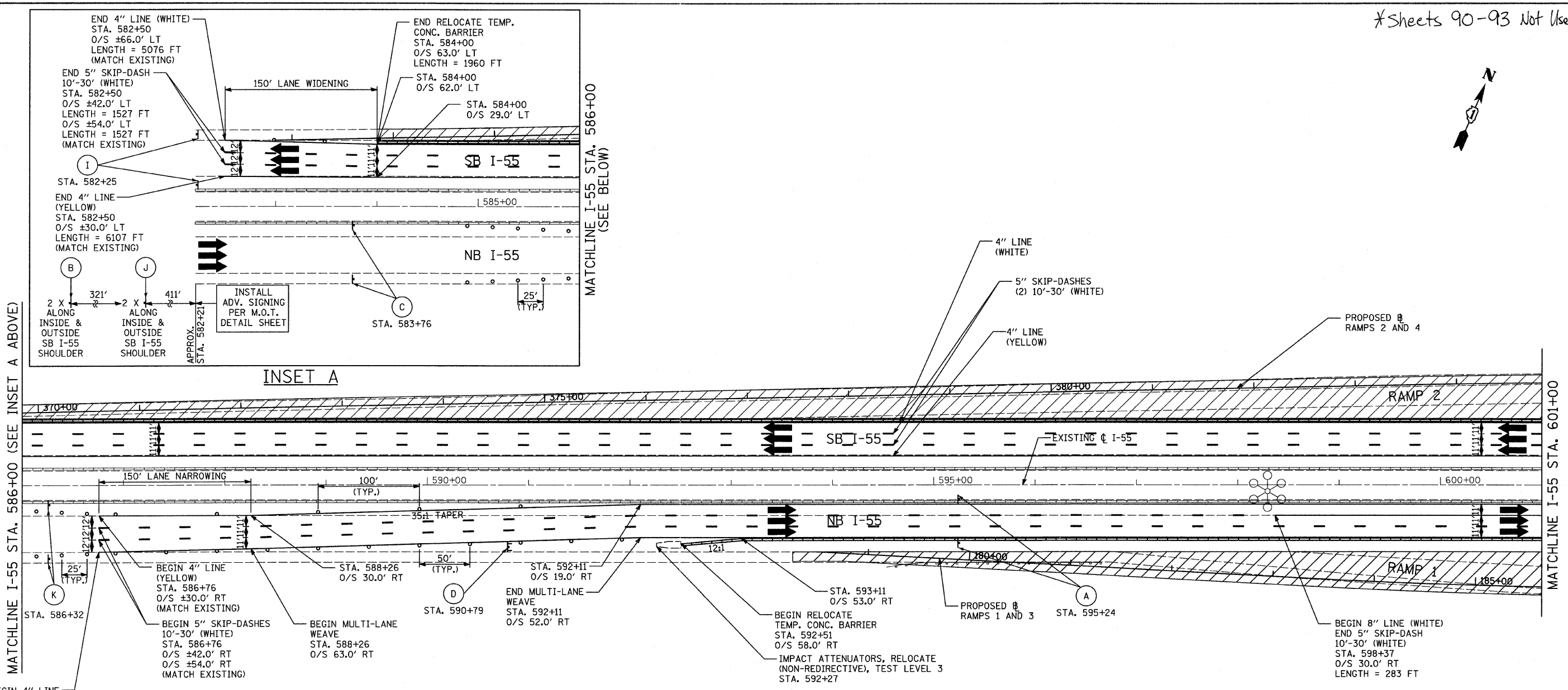
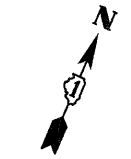
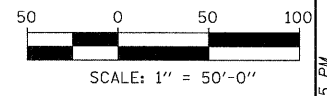
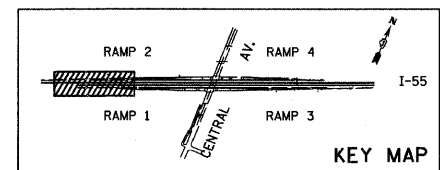


*Sheets 90-93 Not Used



BEGIN 4" LINE (WHITE)
 STA. 586+76
 O/S ±66.0' RT
 (MATCH EXISTING)

- LEGEND:**
- TEMPORARY CONCRETE BARRIER
 - TRAFFIC MOVEMENT
 - WORK ZONE
 - TEMPORARY PAVEMENT (INTERSTATE)
 - BARRICADE, TYPE III
 - DRUM WITH MONO-DIRECTIONAL STEADY BURNING LIGHT
 - ARROW BOARD
 - M.O.T. APPURTENANCES REMAINING FROM PREVIOUS STAGES
 - M.O.T. SIGNING (SEE SIGNING LEGEND FOR SIGN TYPE AND PANEL SIZE)



TYLIN INTERNATIONAL	USER NAME = #USER#	DESIGNED - JDF	REVISED -
	PLOT SCALE = #SCALE#	DRAWN - JDF	REVISED -
	PLOT DATE = 4/28/2011	CHECKED - JPM	REVISED -
		DATE - 03/25/2011	REVISED -

**STATE OF ILLINOIS
 DEPARTMENT OF TRANSPORTATION**

**CENTRAL AVENUE OVER I-55
 MAINTENANCE OF TRAFFIC PLANS STAGE 3 - I-55**
 SCALE: 1" = 50' SHEET NO. 1 OF 4 SHEETS STA. 582+21 TO STA. 601+00

F.A.I. RTE.	SECTION	COUNTY	TOTAL SHEETS	SHEET NO.
I-55	0711.2R & 1011.1BR	COOK	741	94
FED. ROAD DIST. NO.			ILLINOIS FED. AID PROJECT	
			CONTRACT NO. 60999	