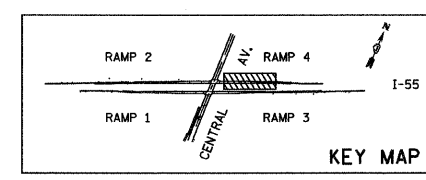
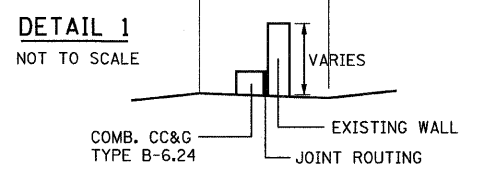
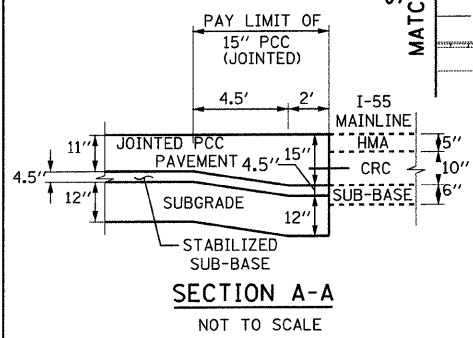


LEGEND - REMOVAL

APPROACH SLAB REMOVAL	
PAVEMENT REMOVAL	
SIDEWALK REMOVAL, MEDIAN REMOVAL, SHOULDER REMOVAL	
GUARDRAIL REMOVAL, COMB. CC&G REMOVAL	
FENCE REMOVAL	
CONCRETE BARRIER REMOVAL	
TREE REMOVAL (SIZE IN UNITS)	
TREE TRUNK PROTECTION	

- NOTES:**
- SEE EXISTING LIGHTING PLAN FOR REMOVAL OF EXISTING LIGHTING UNITS.
 - REMOVE SIGN PANEL ASSEMBLY, TYPE A OR TYPE B INCLUDES THE REMOVAL OF THE EXISTING SIGN PANELS.
 - CONCRETE BARRIER REMOVAL SHALL INCLUDE ANY ATTACHED APPURTENANCES AND BARRIER BASE.

- NOTES:**
- RUMBLE STRIPS SHALL BE PLACED ALONG I-55 PER STANDARD 642001 IN ALL AREAS WHERE THEY ARE REMOVED FOR MAINTENANCE OF TRAFFIC OPERATIONS. THIS WORK SHALL BE PAID FOR AS SHOULDER RUMBLE STRIP.
 - DELINEATORS SHALL BE PLACED ALONG THE RAMPS PER STANDARD 635001 EVERY 100 FT.
 - BARRIER TO CURB AND GUTTER TRANSITION SHOWN ON STRUCTURAL MSE WALL SHEETS.



TYLIN INTERNATIONAL	USER NAME = #USER#	DESIGNED - AZ	REVISED -	STATE OF ILLINOIS DEPARTMENT OF TRANSPORTATION	CENTRAL AVENUE OVER I-55 EXISTING AND PROPOSED PLAN - I-55 - RAMP 4			F.A.I. RTE. I-55	SECTION 0711.2R & 1011.1BR	COUNTY COOK	TOTAL SHEETS 741	SHEET NO. 119	
	PLOT SCALE = #SCALE#	CHECKED - DMJ	REVISED -		SCALE: 1:50	SHEET NO. 14 OF 15 SHEETS	STA. 402+00 TO STA. 412+00	CONTRACT NO. 60999					
	PLOT DATE = 4/28/2011	DATE - 03/25/2011	REVISED -			FED. ROAD DIST. NO. ILLINOIS FED. AID PROJECT							
	<p style="font-size: small;">P:\01345\ROAD\55\sh41.dgn 4/28/2011 1:24:45 PM</p>												