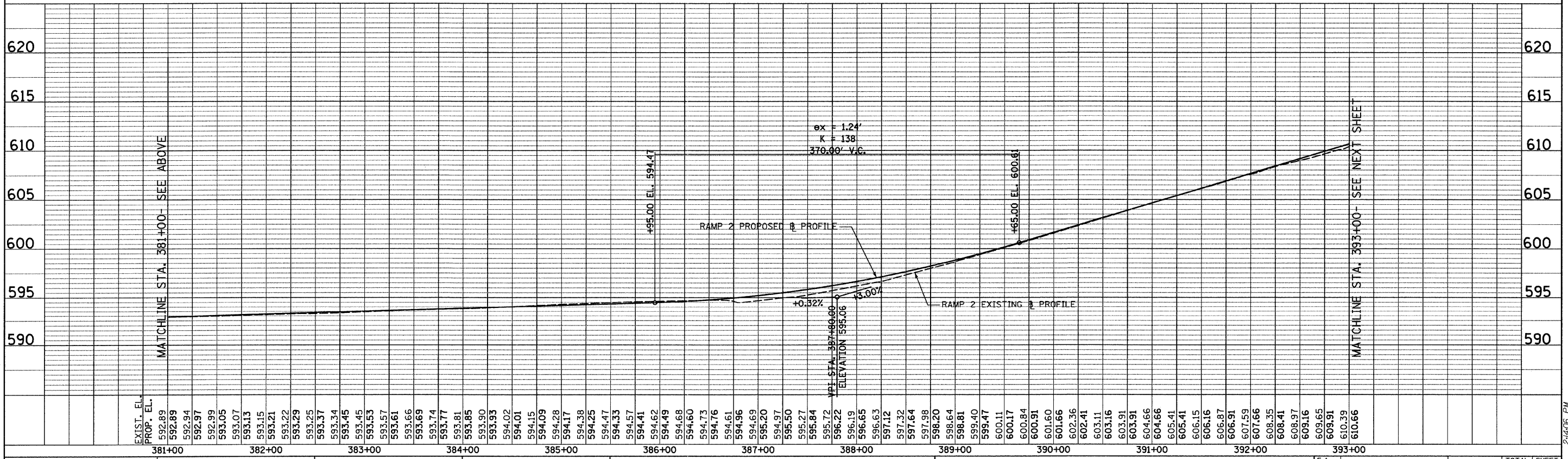
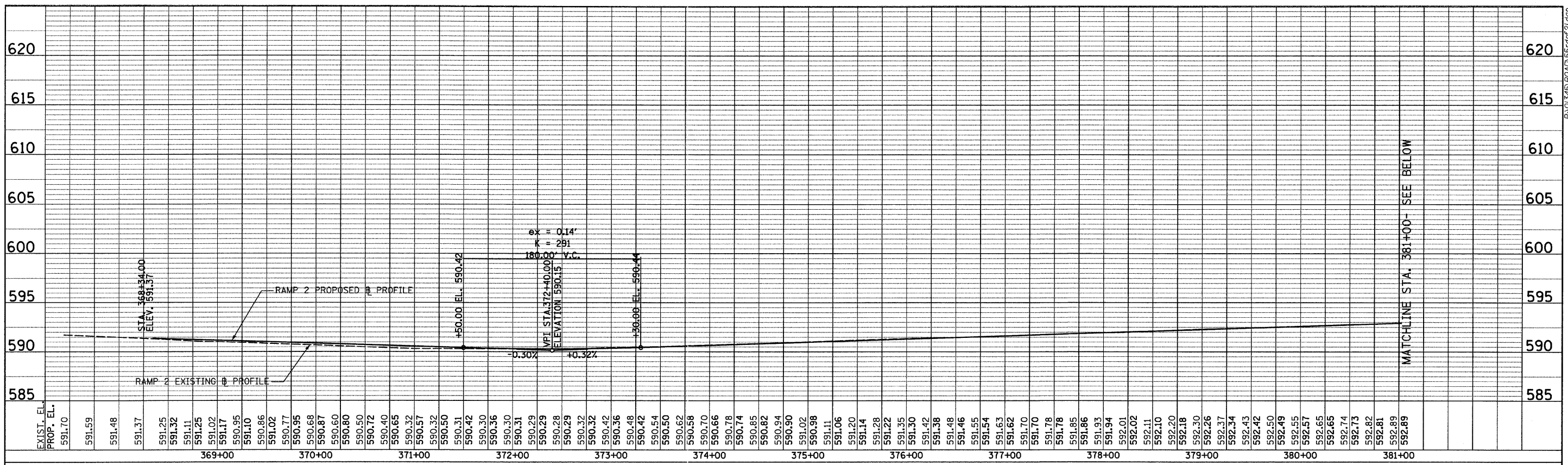


PLAN	SURVEYED	BY	DATE
NOTE BOOK NO.	ALIGNED		
NO.	RT. OF WAY CHECKED		
	DRAWN		
	NO. OF WAYS CHECKED		
	ROAD FILE NAME		

PROFILE	SURVEYED	BY	DATE
NOTE BOOK NO.	GRADES CHECKED		
NO.	E.M. NOTED		
	STRUCTURE NOTATIONS CHFD		



TYLIN INTERNATIONAL	USER NAME = *USER*	DESIGNED - JPM	REVISED -	STATE OF ILLINOIS DEPARTMENT OF TRANSPORTATION	CENTRAL AVENUE OVER I-55 ROADWAY PROFILE - RAMP 2			F.A. RTE. 55	SECTION 0711.2R & 1011.1BR	COUNTY COOK	TOTAL SHEETS 741	SHEET NO. 125	
	PLOT SCALE = *SCALE*	CHECKED - AZ	REVISED -		SCALE: HOR: 1"=50'	SHEET NO. 1 OF 2 SHEETS	STA. 369+00 TO STA. 393+00	CONTRACT NO. 60999					
	PLOT DATE = 4/28/2011	DATE - 03/25/2011	REVISED -		FED. ROAD DIST. NO. ILLINOIS	FED. AID PROJECT							
	P:\0345\ROAD\55-df1.dgn												