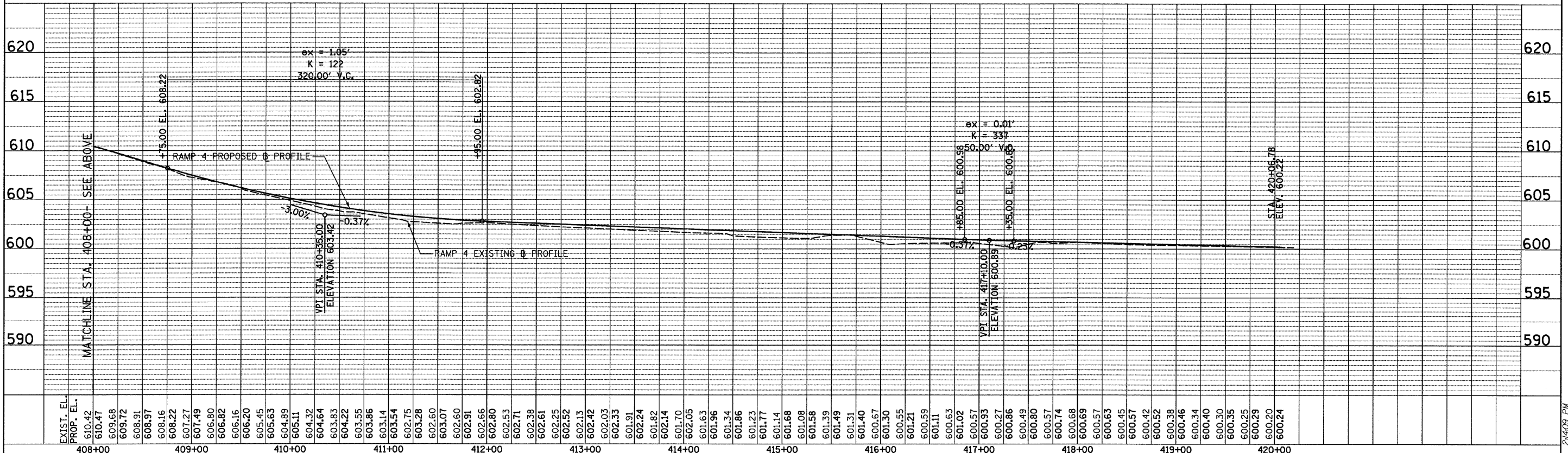
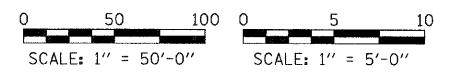
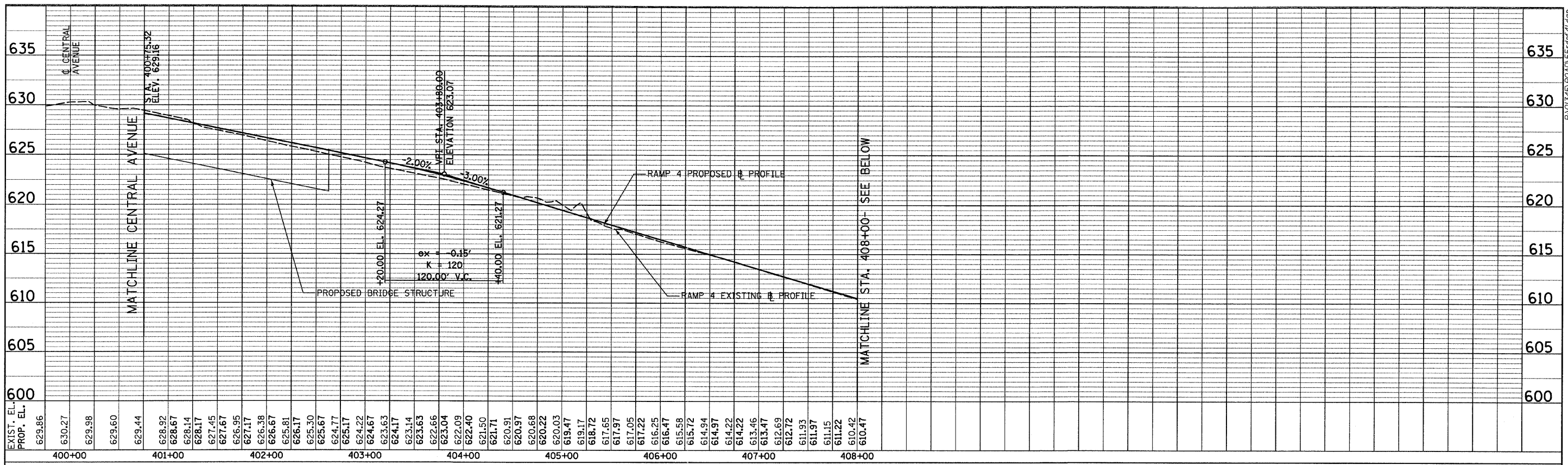


PLAN	SURVEYED	BY	DATE
NOTE BOOK	ALIGNED		
NO.	RT. OF WAY CHECKED		
	NO.		
	ROAD FILE NAME		

PROFILE	SURVEYED	BY	DATE
NOTE BOOK	GRADES CHECKED		
NO.	STRUCTURE NOTATIONS CHECKED		



TYLIN INTERNATIONAL USER NAME = #USER# DESIGNED - JPM DRAWN - JPM CHECKED - AZ DATE - 03/25/2011	REVISIONS REVISIONS REVISIONS REVISIONS	STATE OF ILLINOIS DEPARTMENT OF TRANSPORTATION	CENTRAL AVENUE OVER I-55 ROADWAY PROFILE - RAMP 4		F.A. RTE. 55 SECTION 0711.2R & 1011.1BR COUNTY COOK TOTAL SHEETS 741 SHEET NO. 128	
	PLOT SCALE = #SCALE# PLOT DATE = 4/28/2011		DATE - 03/25/2011	SCALE: HOR: 1"=50' VER: 1"=5'	SHEET NO. 1 OF 1 SHEETS STA. 400+00 TO STA. 420+00	CONTRACT NO. 60999 FED. ROAD DIST. NO. ILLINOIS FED. AID PROJECT
	4/28/2011 2:49:09 PM					
	P:\01345\ROAD\55rdof41.dgn					