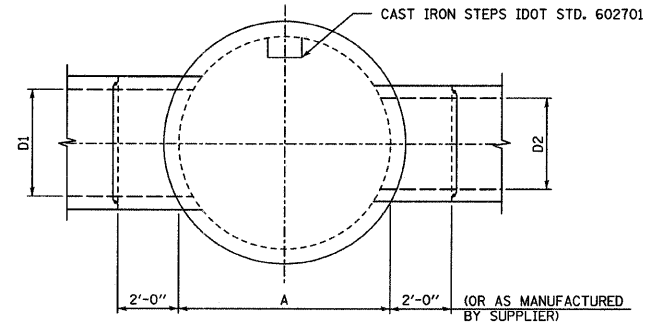
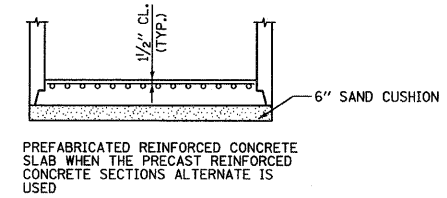
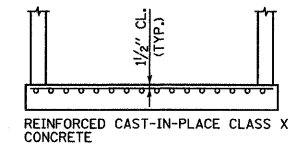


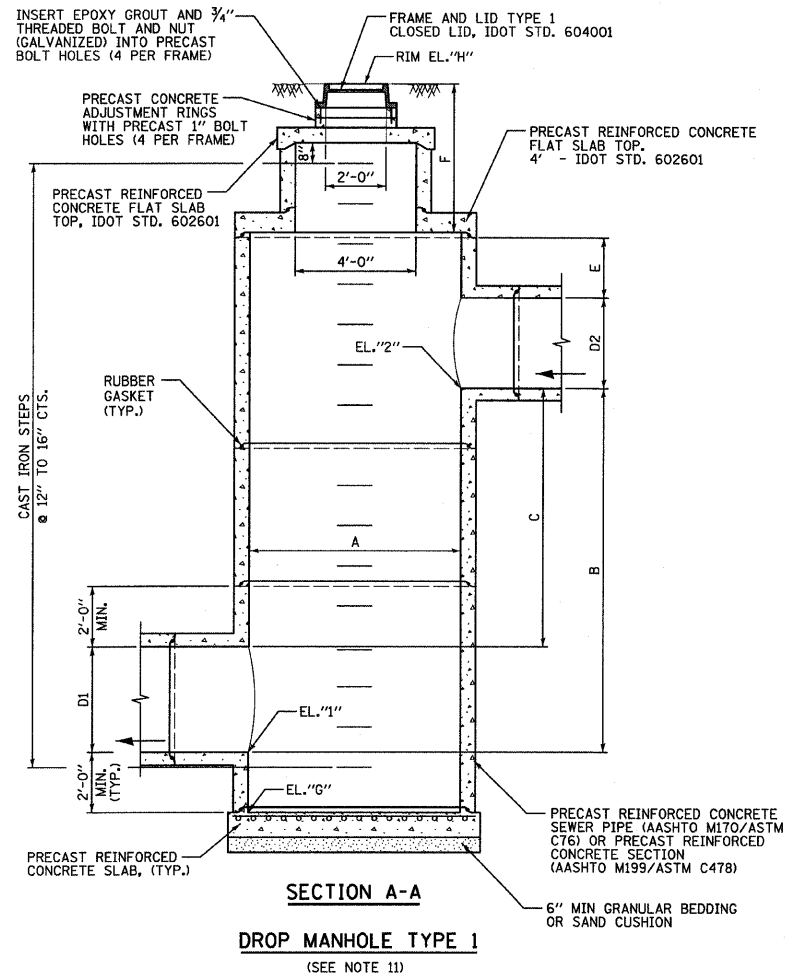
PLAN VIEW



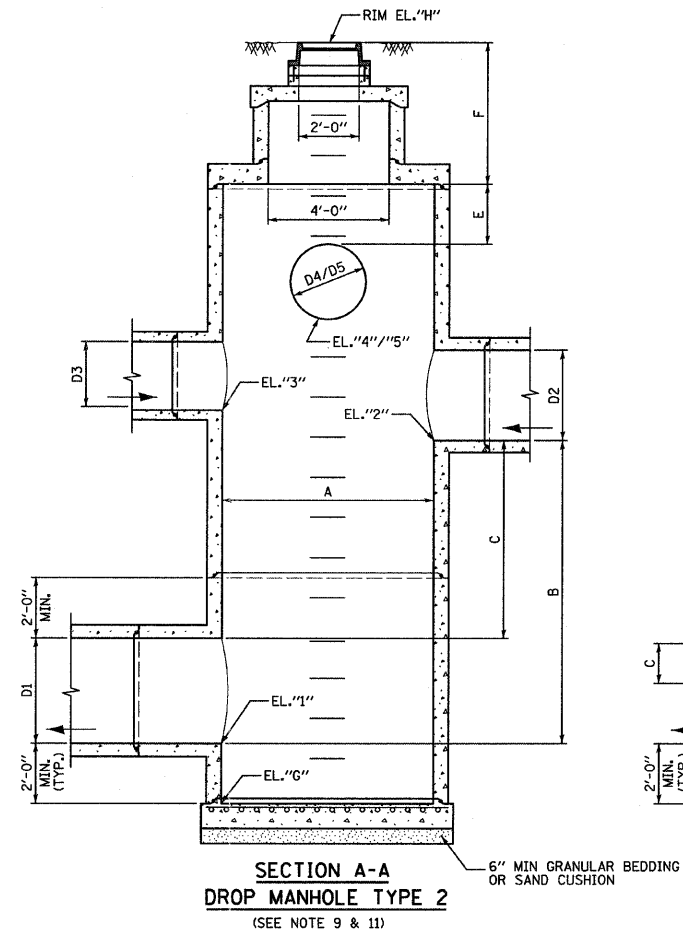
SECTIONAL PLAN



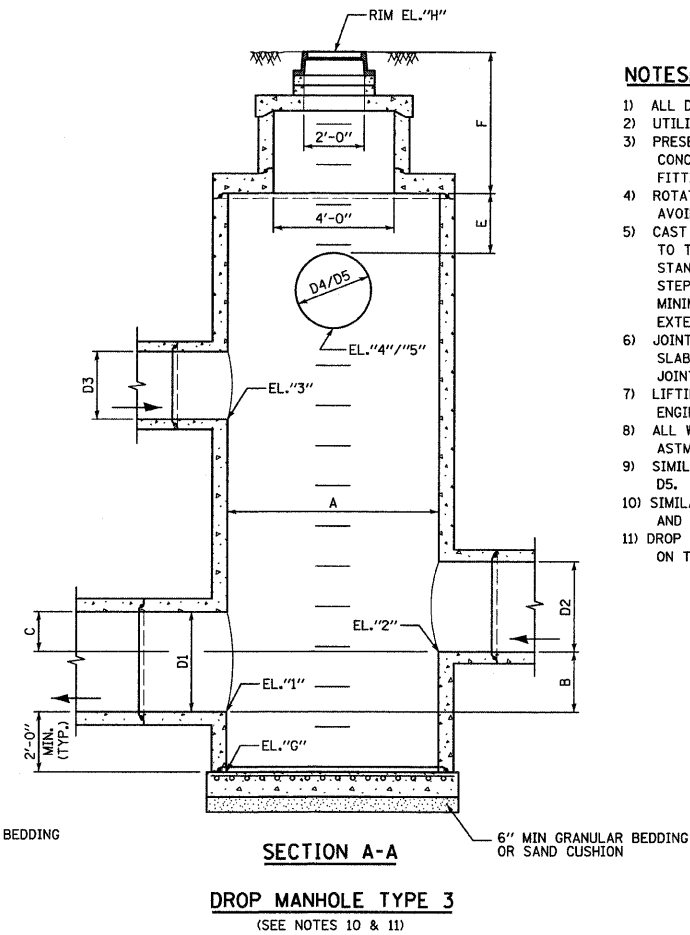
ALTERNATE BOTTOM SLAB



SECTION A-A
DROP MANHOLE TYPE 1
(SEE NOTE 11)



SECTION A-A
DROP MANHOLE TYPE 2
(SEE NOTE 9 & 11)



SECTION A-A
DROP MANHOLE TYPE 3
(SEE NOTES 10 & 11)

NOTES:

- 1) ALL DIMENSIONS ARE INSIDE DIMENSIONS.
- 2) UTILIZE PIPE "T" SECTIONS WHENEVER AVAILABLE.
- 3) PRESET PIPE OPENINGS IN PRECAST REINFORCED CONCRETE SECTIONS IF "T" SECTIONS AND SPECIAL FITTINGS ARE NOT AVAILABLE.
- 4) ROTATE FLAT SLAB AND MANHOLE RISER SO STEPS AVOID STORM SEWER OPENINGS.
- 5) CAST IRON STEPS SHALL BE GRAY IRON CONFORMING TO THE REQUIREMENTS OF ARTICLE 1006.14 OF THE STANDARD SPECIFICATIONS. STEPS SHALL BE EMBEDDED INTO THE WALL A MINIMUM OF THREE (3) INCHES. STEPS SHALL NOT BE EXTENDED ON THE OUTSIDE.
- 6) JOINT CONFIGURATION AND DIMENSIONS OF FLAT SLAB TOP SHALL MATCH AND FIT THE RISER JOINT DETAIL.
- 7) LIFTING DEVICES SHALL BE APPROVED BY THE ENGINEER.
- 8) ALL WORK SHALL BE AS PER AASHTO REQUIREMENTS. ASTM IS LISTED AS SUPPLEMENTARY.
- 9) SIMILAR TO TYPE 1, ALSO WITH SEWERS D3, D4 AND D5.
- 10) SIMILAR TO TYPE 1, ALSO WITH SEWERS D3, D4, D5 AND LOWER D2.
- 11) DROP MANHOLE TYPE 2 AND TYPE 3 ARE NOT USED ON THIS PROJECT.

DROP MANHOLE SCHEDULE

STRUCT NUMBER	TYPE	LOCATION	STATION	OFFSET	DIMENSIONS										ELEVATIONS (FT)							
					A (FT)	B (FT)	C (FT)	D1 (IN)	D2 (IN)	D3 (IN)	D4 (IN)	D5 (IN)	E (FT)	F (FT)	1	2	3	4	5	G	H	
26	1	CENTRAL	16+59.28	45.38 LT	4	3.17	2.17	12	12	-	-	-	2	2.98	587.24	590.41	-	-	-	585.24	595.39	

TYLIN INTERNATIONAL USER NAME = #USER# PLOT SCALE = #SCALE# PLOT DATE = 4/28/2011	DESIGNED - AZ	REVISED -	STATE OF ILLINOIS DEPARTMENT OF TRANSPORTATION	CENTRAL AVENUE OVER I-55 DRAINAGE DETAILS: DROP MANHOLE				F.A.I. R.T.E.	SECTION	COUNTY	TOTAL SHEETS	SHEET NO.
	DRAWN - AZ	REVISED -		I-55	0711.2R & 1011.1BR	COOK	741	149A				
	CHECKED - JDF	REVISED -		SCALE: NONE				SHEET NO. OF SHEETS STA. TO STA.		CONTRACT NO. 60999		
	DATE - 03/25/2011	REVISED -		FED. ROAD DIST. NO. [ILLINOIS] FED. AID PROJECT								