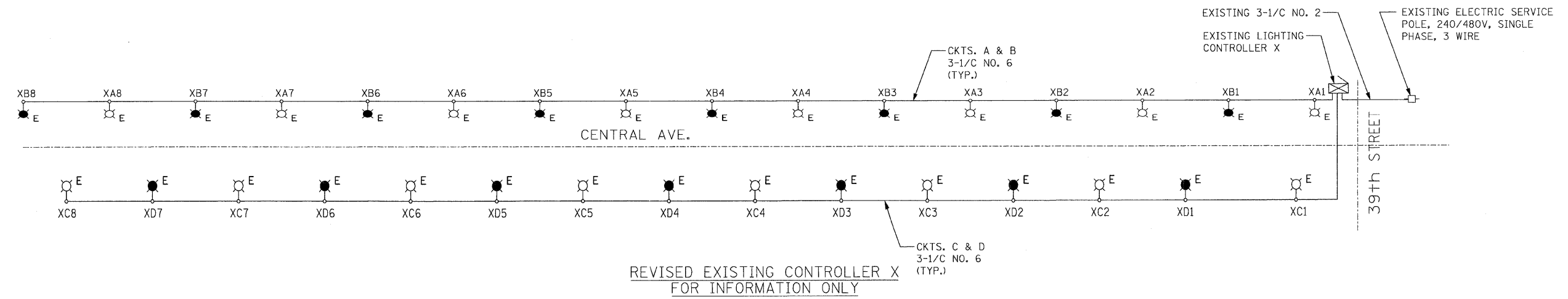


- ELECTRICAL SYMBOLS**
- E EXISTING ROADWAY LUMINAIRE ON BLACK WIRE
 - E EXISTING ROADWAY LUMINAIRE ON RED WIRE
 - 3-1/C NO. 6 IN A RACEWAY, UNLESS NOTED OTHERWISE
 - ⊠ LIGHTING CONTROL CABINET
 - ELECTRIC SERVICE POLE



E-10

SINGH
 SINGH & ASSOCIATES, INC.
 CONSULTING ENGINEERS

300 W. ADAMS ST.
 CHICAGO, IL 60606
 TEL: (312) 629-0240
 FAX: (312) 629-8449

USER NAME = #USER#	DESIGNED - VG	REVISED -
PLOT SCALE = #SCALE#	DRAWN - AM	REVISED -
PLOT DATE = 3/22/2011	CHECKED - GR	REVISED -
	DATE - 3-25-2011	REVISED -

**STATE OF ILLINOIS
 DEPARTMENT OF TRANSPORTATION**

CENTRAL AVENUE OVER I-55 WIRING DIAGRAM CONTROLLER X			
SCALE: 1" = 20'	SHEET NO.	OF SHEETS	STA. TO STA.

F.A. RTE. 55	SECTION 9(H, HB & SBJR-1)	COUNTY COOK	TOTAL SHEETS 741	SHEET NO. 218
FED. ROAD DIST. NO.		ILLINOIS FED. AID PROJECT		
CONTRACT NO. 60999				