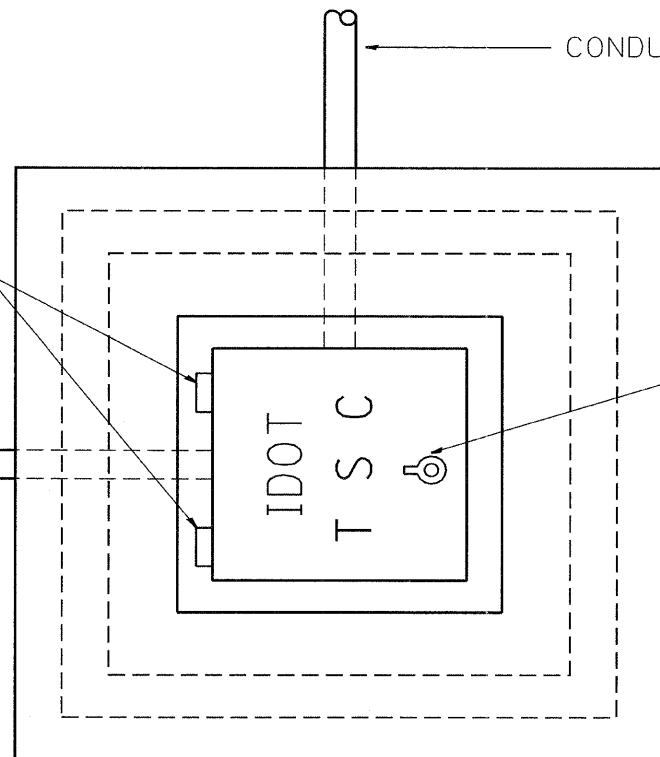


TYPE "T" HINGES REQUIRED ONLY ON
ON HEAVY DUTY SPECIAL.

CONDUIT TYP.

CONDUIT TYP.

TYPE "G" HANDLE FOR BOTH HDHH AND HDHH SPECIAL

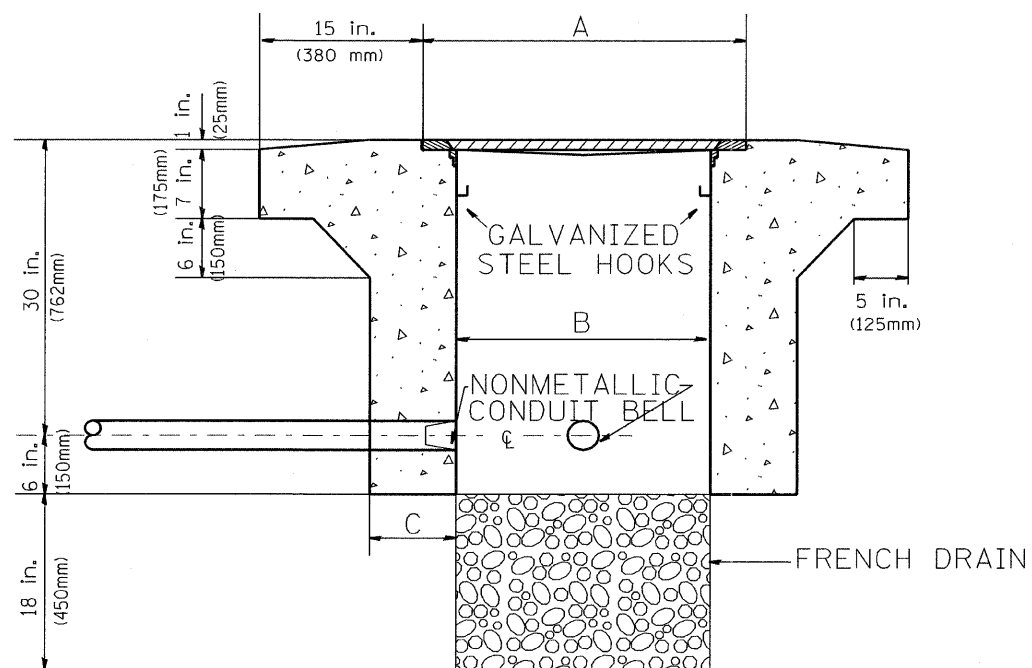


PLAN

HEAVY DUTY HANDHOLE MINIMUM DIMENSIONS (UNHINGED)

A	28" (711 mm)
B	22" (559 mm)
C	8" (200 mm)

(FRAME AND COVER 260 LBS. (118 Kg.) MIN.)



ELEVATION

HEAVY DUTY HANDHOLE SPECIAL MINIMUM DIMENSIONS

A	31.5" (800 mm)
B	30" (762 mm)
C	10" (250 mm)

(FRAME AND COVER 405 LBS. (184 Kg. (405))

PC CONCRETE - HEAVY DUTY HAND HOLE

FILE NAME = C:\Projects\TSC\TYPICALS\155ARSENALTYPIAL.dgn	USER NAME = mezag	DESIGNED - R.L.	REVISED - 04/97	STATE OF ILLINOIS DEPARTMENT OF TRANSPORTATION TRAFFIC SYSTEMS CENTER	PC CONCRETE - HEAVY DUTY HAND HOLE		F.A. RTE.	SECTION	COUNTY	TOTAL SHEETS	SHEET NO.
PLOT SCALE = 5000.0000 / IN.	CHECKED - R.L.	DATE - 09/11/96	REVISED -		SCALE: NONE	SHEET NO. OF SHEETS	STA. TO STA.	CONTRACT NO.		741	239
PLOT DATE = 9/29/2010			REVISED -		FED. ROAD DIST. NO. ILLINOIS FED. AID PROJECT						
			REVISED -		TRAFFIC SYSTEMS CENTER (TY-1TSC-400#15)						