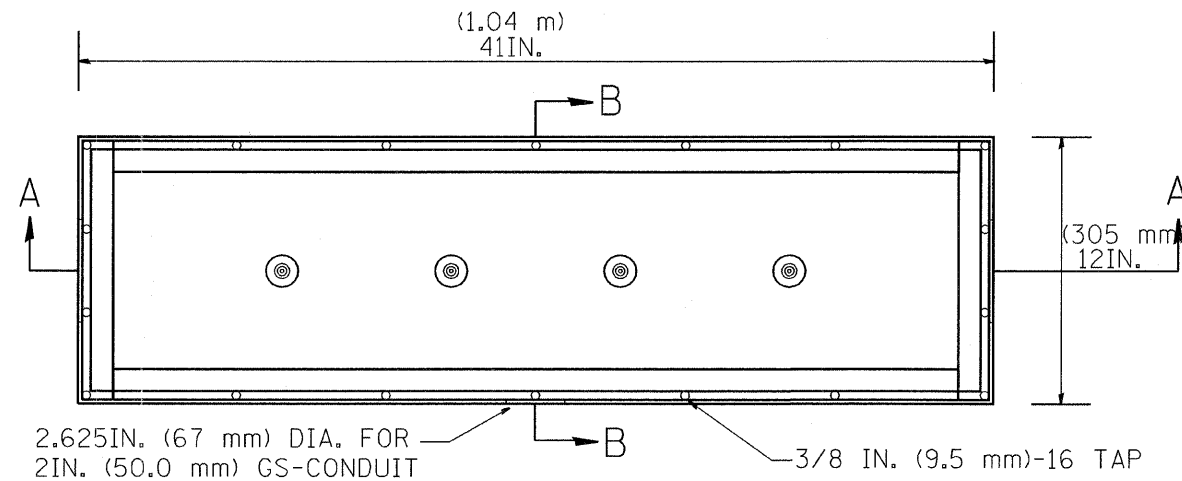


DRILL AND COUNTERSINK TOP OF COVER FOR  
 3/8" (9.5 mm) 16 X 3/4" (19 mm)  
 FLAT HEAD STAINLESS STEEL SLOTTED SCREWS

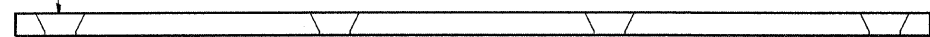
BACK VIEW

STAINLESS STEEL COVER WITH NEOPRENE GASKET



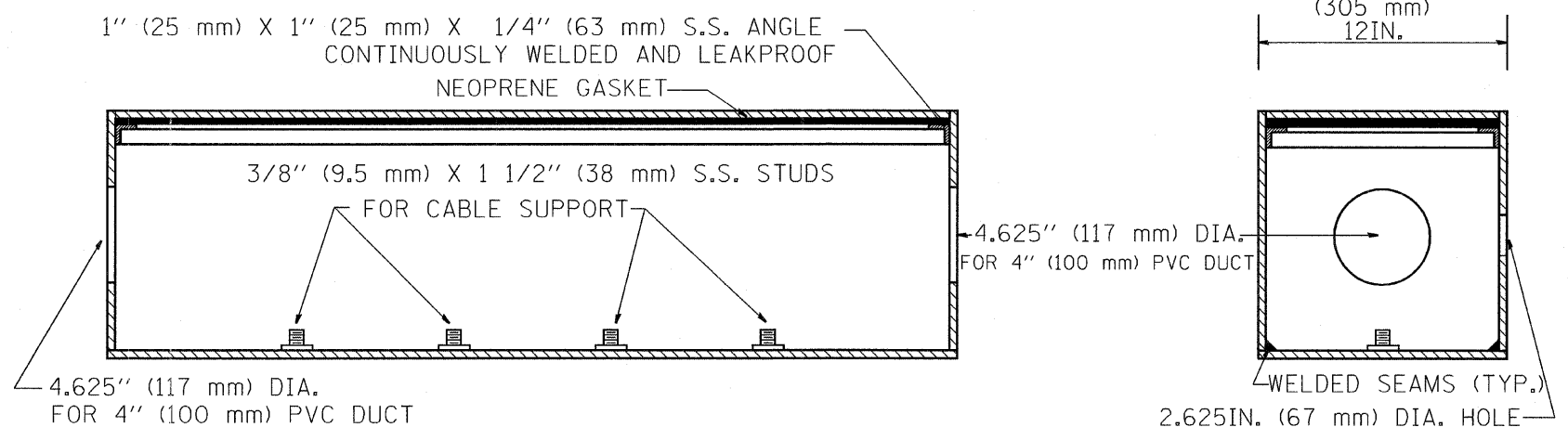
TOP VIEW

STAINLESS STEEL JUNCTION BOX TYPE "J"



SIDE VIEW

STAINLESS STEEL COVER



SIDE VIEW SECTION A-A

SIDE VIEW SECTION B-B

**NOTE:**

JUNCTION BOX TO BE CONSTRUCTED OF  
 1/4 IN. (6.3 mm) TYPE 316 STAINLESS STEEL  
 ALL WELDS SHALL BE CONTINUOUS AND LEAKPROOF  
 ALL COVERS SHALL BE UNIVERSAL IN FIT.

BARRIER WALL SHALL BE GAPPED A MINIMUM OF 15FT. (4.57 m) FOR PROPER PLACEMENT OF JUNCTION BOX TYPE "J" AND  
 FOR A SMOOTH TRANSITION OF 4IN. (100 mm) PVC SURVEILLANCE DUCT(S) FROM BARRIER WALL FOOTER INTO JUNCTION BOX.

FILE NAME = C:\Projects\TSC\TYPICALS\TSC\TYP08.dgn	USER NAME = mezag	DESIGNED - R.L.	REVISED - 06/94	<b>STATE OF ILLINOIS DEPARTMENT OF TRANSPORTATION TRAFFIC SYSTEMS CENTER</b>	<b>CONCRETE BARRIER WALL JUNCTION BOX TYPE "J"</b>			F.A. RTE.	SECTION	COUNTY	TOTAL SHEETS	SHEET NO.
		DRAWN - G.M.	REVISED - 10/96		SCALE: NONE	SHEET NO. OF SHEETS	STA. TO STA.				741	249
		CHECKED - R.L.	REVISED -									
		DATE - 06/22/94	REVISED -									
CONTRACT NO.												
FED. ROAD DIST. NO. ILLINOIS FED. AID PROJECT												