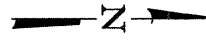
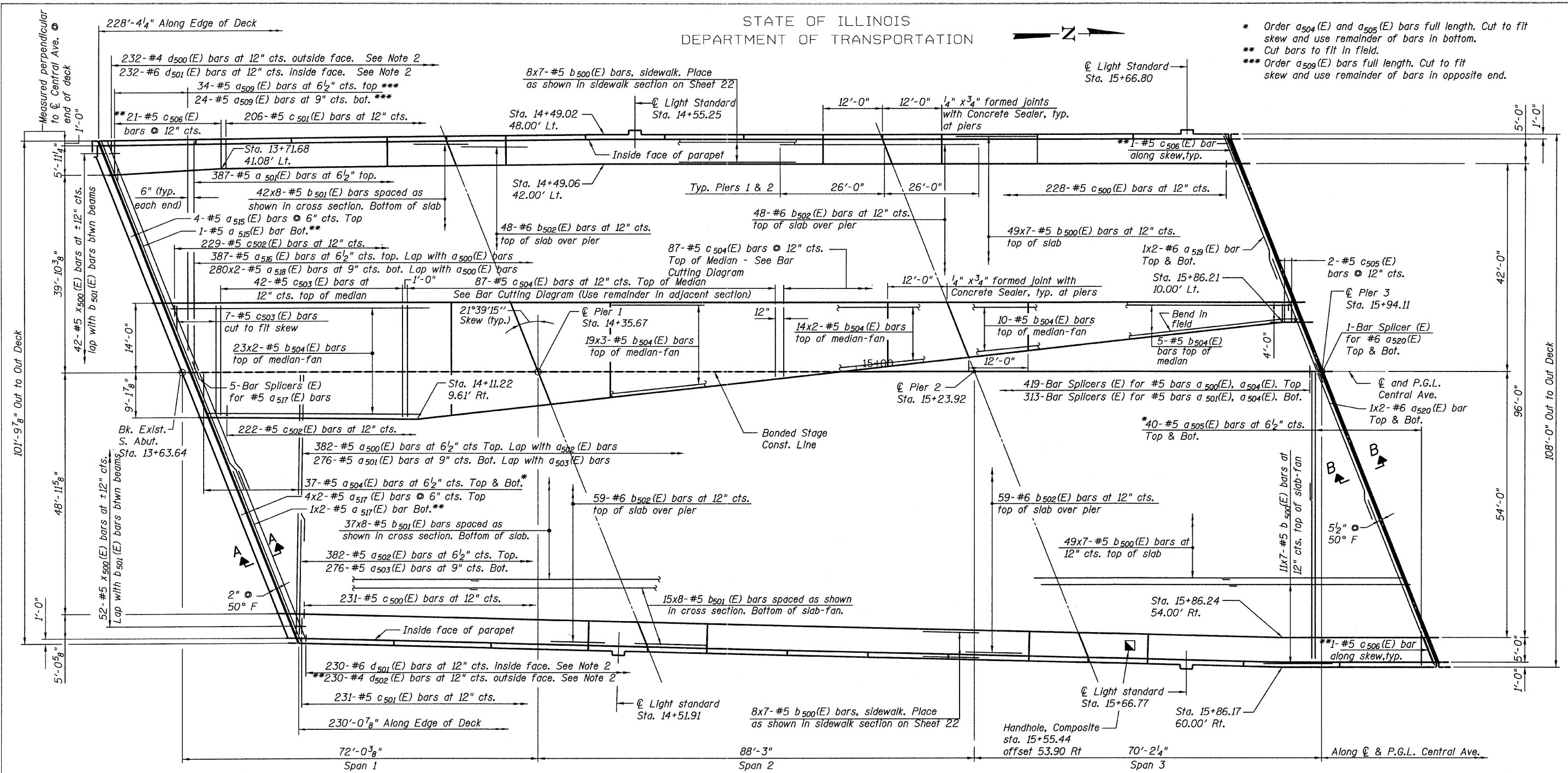


STATE OF ILLINOIS  
DEPARTMENT OF TRANSPORTATION



\* Order  $a_{504}(E)$  and  $a_{505}(E)$  bars full length. Cut to fit skew and use remainder of bars in bottom.  
 \*\* Cut bars to fit in field.  
 \*\*\* Order  $a_{509}(E)$  bars full length. Cut to fit skew and use remainder of bars in opposite end.



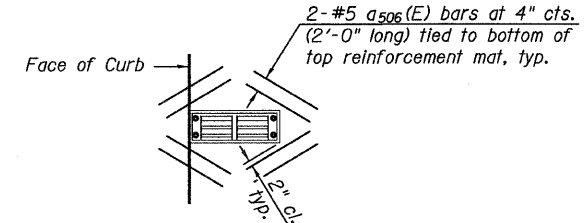
PLAN SPANS 1-3

NOTES:

1. Bars indicated thus 49 x 8-#5 etc. indicates 49 lines of bars with 8 lengths per line.
2. Place bars  $d_{500}(E)$  thru  $d_{502}(E)$  to miss Aluminum Sheeted Joint Location in Parapets.
3. For Section A-A and Section B-B, see Sheet 22.
4. For Cross Section see Sheet 19.
5. For parapet reinforcement, see Sheet 21.
6. Dimensions are based on a Rolled Rail Strip Seal Joint at the S. Abutment. If the Contractor elects to use a Welded Rail Strip Seal Joint, deck dimensions may require adjustments to satisfy the details on Sheet 26.
7. For Scupper locations, see Sheet 28.
8. For handhole details, see Sheet 23A.
9. For Bill of Materials, see Sheet 23.

MINIMUM BAR LAPS

Bar Size	Min. Lap
#4	2'-7"
#5	3'-3"
#6	4'-5"



PLAN AT SCUPPERS

Note:  
Cut longitudinal reinforcement to clear drainage scuppers.

SUPERSTRUCTURE  
SPANS 1, 2 & 3  
STRUCTURE NO. 016-3241

TYLIN INTERNATIONAL	DESIGNED - JRE	REVISIONS		SHEET NO. 17	F.A.I. RTE.	SECTION	COUNTY	TOTAL SHEETS	SHEET NO.	
	CHECKED - AMD, MMB	NAME	DATE		71 SHEETS	55	0711.2R & 1011.1BR	COOK	741	270
	DRAWN - MAU					CONTRACT NO. 60999				
	CHECKED - AMD, MMB					FED. ROAD DIST. NO. 1 ILLINOIS FED. AID PROJECT				
	DATE - 03/25/2011				4/28/2011					