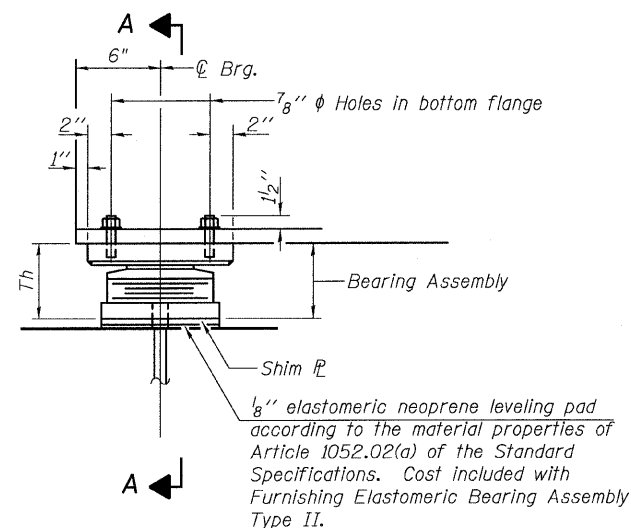
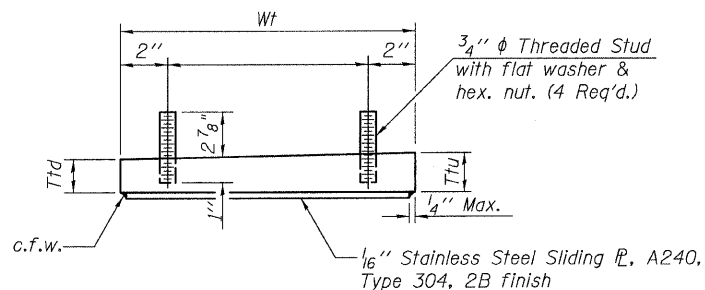


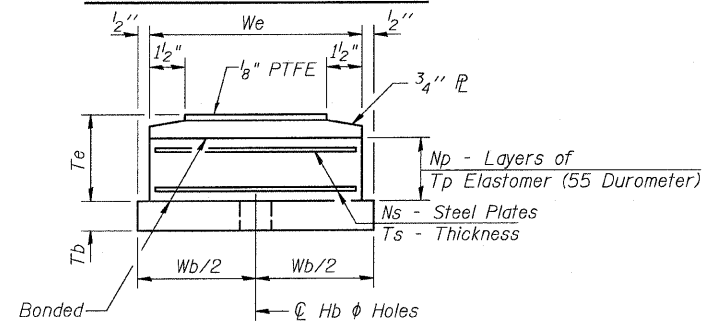
STATE OF ILLINOIS  
DEPARTMENT OF TRANSPORTATION



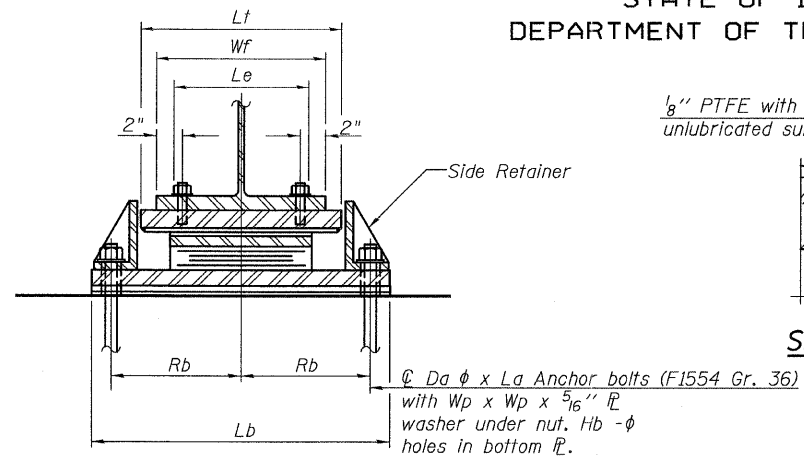
ELEVATION AT PIER 3



TOP BEARING ASSEMBLY

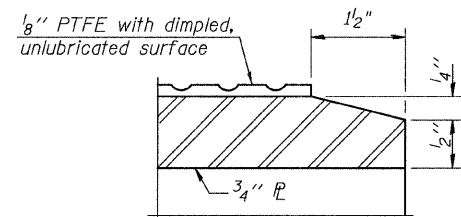


BOTTOM BEARING ASSEMBLY

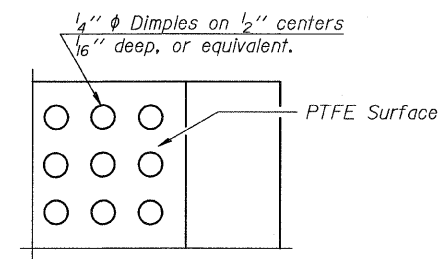


SECTION A-A

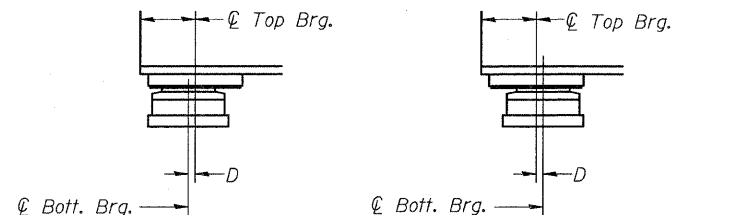
TYPE II ELASTOMERIC EXP. BRG.



SECTION THRU PTFE



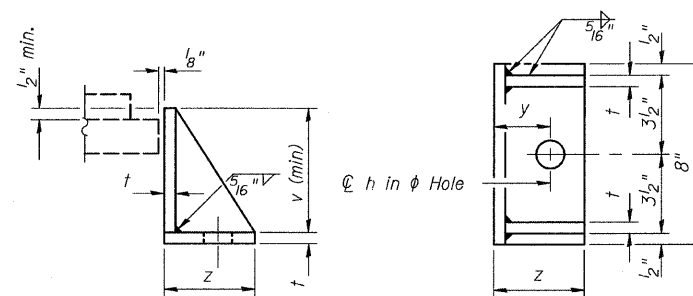
PLAN-PTFE SURFACE



BELOW 50°F. (Move bott. brg. away from fixed brg.)  
ABOVE 50°F. (Move bott. brg. toward fixed brg.)

SETTING ANCHOR BOLTS AT EXP. BRG.

D = 1/8" per each 100' of expansion for every 15° temp. change from the normal temp. of 50°F.



SIDE RETAINER

Equivalent rolled angle with stiffeners will be allowed in lieu of welded plates.

SHIM PLATE THICKNESS TABLE

Bearing Location	Beam																				
	1	2	3	4	5	6	7	8	9	10	11	12	13	14	15	16	SG2	SG3	SG4	SG8	SG9
South Abutment	--	--	--	--	--	--	--	1/8"	1/8"	1/4"	1/4"	3/8"	1/2"	5/8"	--	--	3/8"	--	--	--	--
Pier 1	--	--	--	--	--	--	--	--	--	--	--	--	--	--	--	--	1/2"	--	--	--	--
Pier 2	--	--	--	--	--	--	--	--	--	--	--	--	--	--	--	--	1/2"	--	--	--	--
Pier 3, South	--	--	--	1/8"	1/8"	1/4"	1/2"	1/2"	--	--	1/8"	1/4"	3/8"	3/8"	1/2"	--	--	1/4"	--	--	--
Pier 3, North	--	--	--	--	--	--	--	--	5/8"	5/8"	5/8"	5/8"	1/2"	1/2"	1/2"	--	--	--	1/4"	--	1/4"
Pier 4	--	--	--	--	--	--	--	--	--	--	--	--	--	--	--	--	--	--	--	--	1/4"
Abutment IC, S. Brg.	1/2"	--	--	--	--	--	--	--	1/4"	1/4"	1/4"	1/4"	1/4"	1/4"	1/4"	--	--	--	--	1/4"	--

Notes:  
Anchor bolts shall be ASTM F1554 all-thread (or an Engineer-approved alternate material) of the grade(s) and diameter(s) specified. ASTM A307 Grade C anchor bolts may be used in lieu of ASTM F1554 Grade 36 (Fy=36ksi). The corresponding specified grade of AASHTO M314 anchor bolts may be used in lieu of ASTM F1554.  
Anchor bolts for Type II bearings shall be placed in holes drilled in the concrete through holes in the bottom bearing plate after members are in place. Side retainers shall be placed after bolts are installed.  
Drilled and set anchor bolts shall be installed according to Article 521.06 of the Standard Specifications.  
Side retainers and other steel members required for the bearing assembly are furnished under a separate contract. Installation of these items are included in the cost of Erecting Elastomeric Bearing Assembly, Type II.  
The 1/8" PTFE sheet shall be bonded directly to the top steel plate with a two-component, medium viscosity epoxy resin, conforming to the requirements of the Federal Specification MMM-A-134, Type I. The bond agent shall be applied on the full area of the contact surfaces.  
Bonding of 1/8" PTFE sheet during vulcanizing process will be permitted provided the process and method of adjusting assembly height is approved by the Engineer.  
The Structural Steel plates of the bearing assembly shall conform to the requirements of AASHTO M270 Grade 50.  
Two 1/2" adjusting shims shall be provided for each bearing in addition to all other plates or shims and placed as shown on the bearing details.

BILL OF MATERIAL

Item	Unit	Total
Erecting Elastomeric Bearing Assembly, Type II	Each	38
Anchor Bolts, 1"	Each	76

See Sheet 42 for Table of Dimensions.

ELASTOMERIC BEARINGS  
TYPE 2  
STRUCTURE NO. 016-3241

TYLIN INTERNATIONAL

DESIGNED - JMA	REVISIONS	
	NAME	DATE
CHECKED - AMD,		
DRAWN - JMA		
CHECKED - AMD,		
DATE - 03/25/2011		

SHEET NO. 43	F.A.I RTE.	SECTION	COUNTY	TOTAL SHEETS	SHEET NO.
	71 SHEETS	55	0711.2R & 1011.1BR	COOK	741
			CONTRACT NO. 60999		
			FED. ROAD DIST. NO. 1 ILLINOIS FED. AID PROJECT		