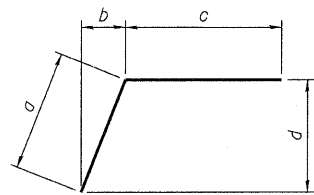


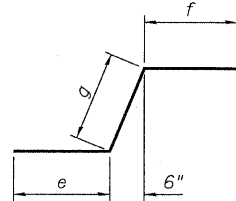
STATE OF ILLINOIS  
DEPARTMENT OF TRANSPORTATION

BILL OF MATERIAL



BAR	a	b	c	d
c502(E)	10"	4"	11"	9"
h515(E)	3'-2"	1'-2"	4'-2"	2'-11"
w500(E)	4'-6"	4'-2"	7'-11"	1'-8"

BARS c502(E), h515(E) & w500(E)



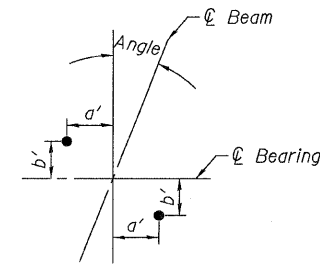
BAR	e	f	g
c500(E)	1'-4"	1'-10"	1'-8"
v511(E)	2'-2"	1'-5"	6"
v512(E)	2'-2"	1'-9"	6"

BARS c500(E), v511(E) & v512(E)



BAR	h	k
d501(E)	1'-2"	1'-9"
e501(E)	2'-1"	9'-4"
h516(E)	2'-1"	9'-4"
h517(E)	2'-11"	10'-1"
n500(E)	10"	5'-11"
n501(E)	1'-4"	9'-3"
s501(E)	4'-0"	2'-2"

BARS d501(E), e501(E), h516(E), h517(E), n500(E), n501(E) and s501(E)

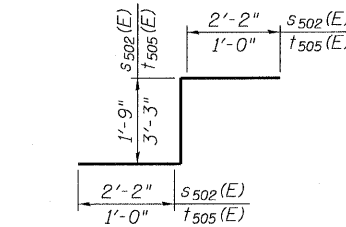


ANCHOR BOLT LAYOUT

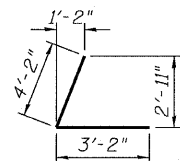
SOUTH ABUTMENT BEARINGS

Beam	Angle	a'	b'
SG1	21°39'15"	8 <sup>5</sup> / <sub>8</sub> "	3 <sup>3</sup> / <sub>8</sub> "
1 thru 16	21°39'15"	8 <sup>5</sup> / <sub>8</sub> "	3 <sup>3</sup> / <sub>8</sub> "
SG2	22°22'28"	8 <sup>1</sup> / <sub>2</sub> "	3 <sup>1</sup> / <sub>2</sub> "
SG3	23°5'11"	8 <sup>1</sup> / <sub>2</sub> "	3 <sup>5</sup> / <sub>8</sub> "

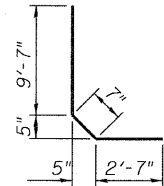
Bar	No.	Size	Length	Shape
c500(E)	4	#5	4'-10"	┌
c502(E)	4	#5	1'-9"	┌
c506(E)	4	#5	1'-2"	┌
c507(E)	2	#5	15'-10"	┌
c508(E)	2	#5	10'-7"	┌
d500(E)	32	#7	4'-1"	┌
d502(E)	119	#5	4'-2"	┌
d503(E)	110	#9	9'-10"	┌
d504(E)	8	#5	2'-0"	┌
e500(E)	6	#5	11'-7"	┌
e501(E)	3	#5	11'-5"	┌
e502(E)	3	#5	12'-9"	┌
h500(E)	6	#5	11'-7"	┌
h501(E)	9	#7	11'-7"	┌
h502(E)	20	#5	9'-9"	┌
h503(E)	25	#7	9'-9"	┌
h504(E)	80	#5	31'-9"	┌
h505(E)	8	#5	32'-9"	┌
h506(E)	84	#5	27'-0"	┌
h507(E)	5	#5	30'-9"	┌
h508(E)	5	#5	12'-0"	┌
h509(E)	8	#6	31'-4"	┌
h510(E)	16	#5	30'-11"	┌
h511(E)	8	#6	27'-2"	┌
h512(E)	16	#5	26'-10"	┌
h513(E)	4	#5	4'-11"	┌
h514(E)	60	#7	7'-4"	┌
h515(E)	58	#7	7'-4"	┌
h516(E)	6	#5	11'-5"	┌
h517(E)	9	#7	13'-0"	┌
h518(E)	19	#5	9'-1"	┌
h519(E)	24	#7	9'-5"	┌
n500(E)	27	#5	6'-9"	┌
n501(E)	38	#9	12'-5"	┌
s500(E)	156	#5	11'-0"	┌
s501(E)	2	#5	6'-2"	┌
s502(E)	29	#5	6'-1"	┌
t500(E)	11	#5	10'-3"	┌
t501(E)	29	#9	9'-7"	┌
t502(E)	16	#9	10'-3"	┌
u500(E)	39	#5	10'-6"	┌
v500(E)	12	#5	24'-9"	┌
v501(E)	12	#9	24'-9"	┌
v502(E)	10	#5	6'-3"	┌
v503(E)	3	#8	6'-3"	┌
v504(E)	67	#5	18'-9"	┌
v505(E)	61	#9	18'-9"	┌
v506(E)	59	#5	17'-5"	┌
w500(E)	32	#8	12'-5"	┌
w501(E)	31	#5	11'-0"	┌
Porous Granular Embankment (Special)		Cu Yd	342	
Structure Excavation		Cu Yd	510	
Concrete Structures		Cu Yd	266.5	
Reinforcement Bars, Epoxy Coated		Pound	37,180	
Furnishing Metal Shell Piles 12"x0.25"		Foot	352	
Driving Piles		Foot	352	
Concrete Sealer		Sq Ft	2,801	
Geocomposite Wall Drain		Sq Yd	268	
Pipe Underdrains for Structures, 4"		Foot	133	
Test Pile Metal Shells		Each	1	
Bar Splicer		Each	159	



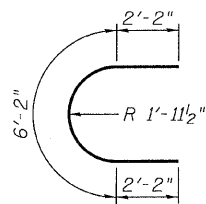
BARS s502(E) and t505(E)



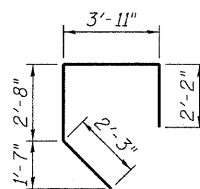
BAR h514(E)



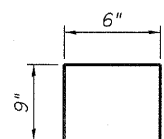
BAR e502(E)



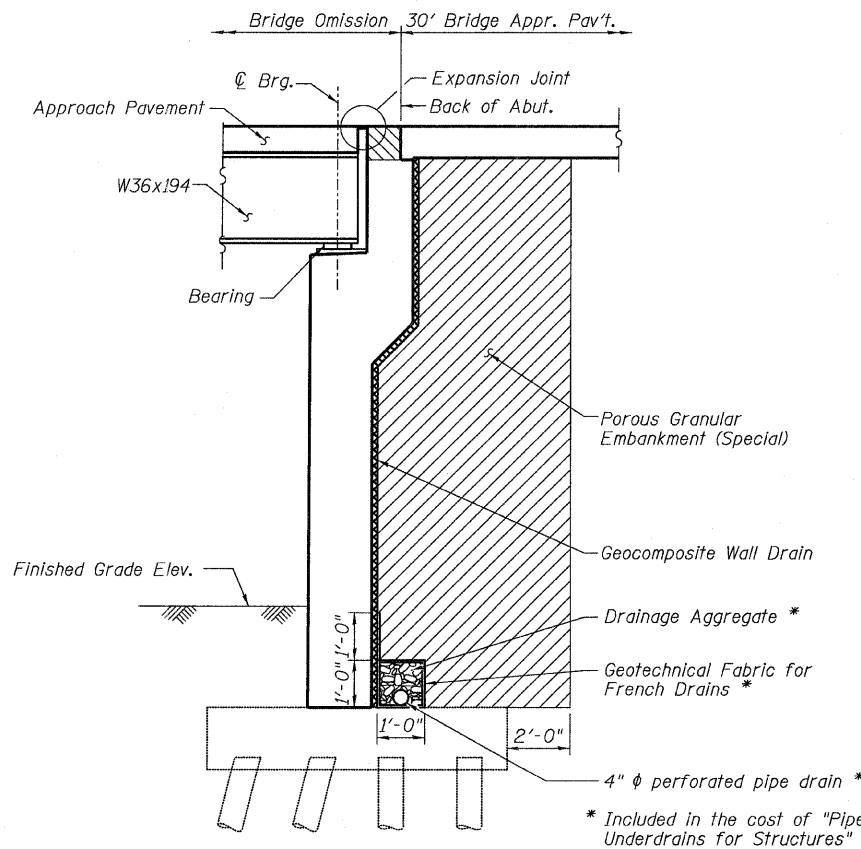
BARS u500(E)



BAR s500(E)

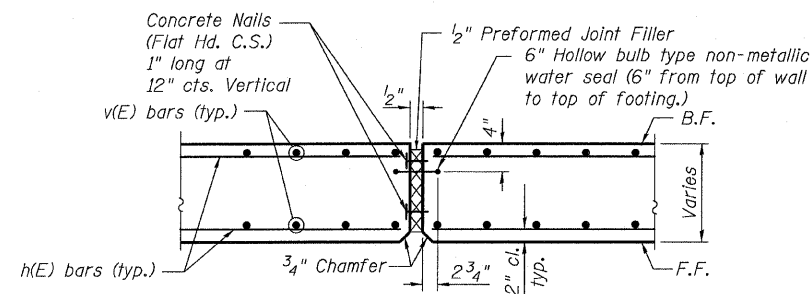


BAR d504(E)



SECTION THRU ABUTMENT

(Horiz. dimensions @ Rt. L's)



EXPANSION JOINT DETAIL

MINIMUM BAR LAPS

Bar Size	Min. Lap
#5	3'-8"
#6	4'-5"

NOTES

Work this sheet with Sheets 46 through 49.

SOUTH ABUTMENT  
DETAILS - 2 of 2  
STRUCTURE NO. 016-3241

TYLIN INTERNATIONAL	DESIGNED - MMB	REVISIONS		SHEET NO. 50	F.A.I RTE. 55	SECTION 0711.2R & 1011.1BR	COUNTY COOK	TOTAL SHEETS 741	SHEET NO. 303
	CHECKED - AMD,	NAME	DATE						
	DRAWN - MMB								
	CHECKED - AMD,								
	DATE - 03/25/2011			71 SHEETS	CONTRACT NO. 60999		FED. ROAD DIST. NO. 1 ILLINOIS FED. AID PROJECT		