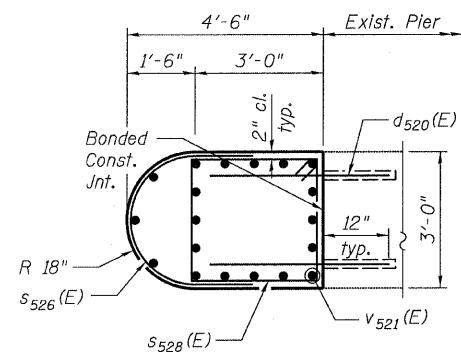
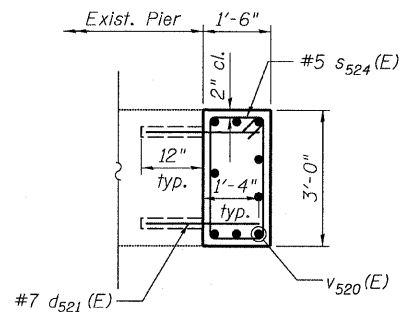


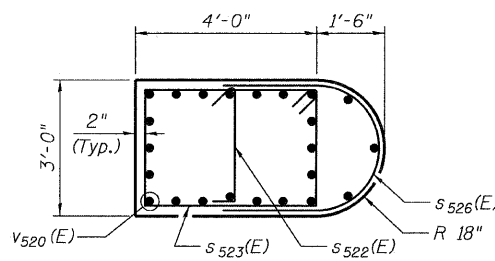
STATE OF ILLINOIS  
DEPARTMENT OF TRANSPORTATION



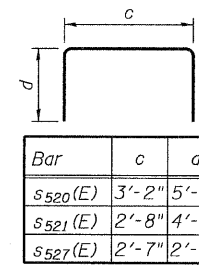
SECTION A-A



SECTION B-B

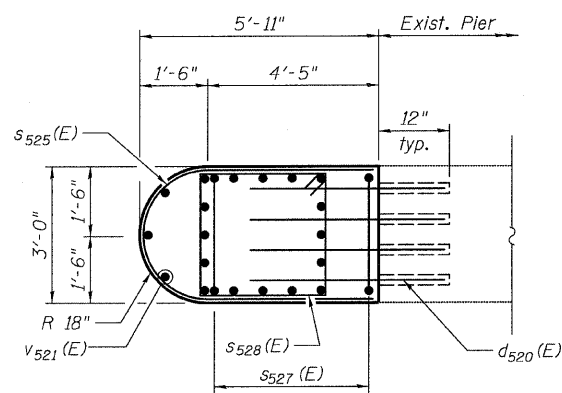


SECTION C-C

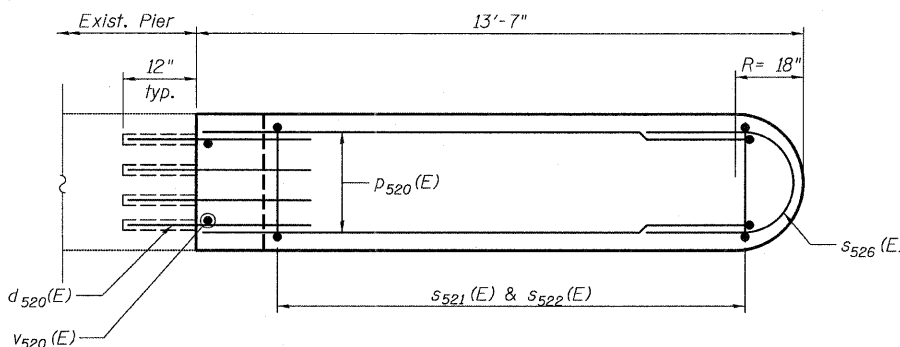


Bar	c	d
s520(E)	3'-2"	5'-8"
s521(E)	2'-8"	4'-8"
s527(E)	2'-7"	2'-2"

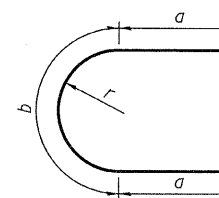
BARS s520(E), s521(E)  
& s527(E)



WEST EXTENSION-PLAN

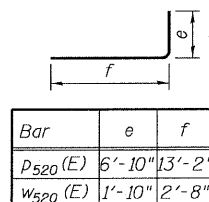


EAST EXTENSION-PLAN



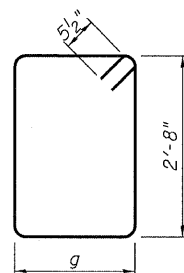
Bar	a	b	r
s525(E)	4'-3"	3'-11"	1'-3"
s526(E)	2'-2"	3'-11"	1'-3"
u520(E)	2'-2"	4'-9"	1'-6"

BARS s525(E), s526(E) & u520(E)



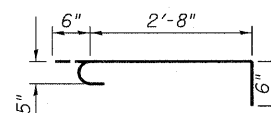
Bar	e	f
p520(E)	6'-10"	13'-2"
w520(E)	1'-10"	2'-8"

BARS p520(E) & w520(E)

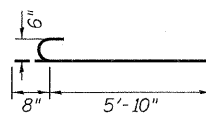


Bar	g
s523(E)	3'-8"
s524(E)	1'-3"
s528(E)	2'-8"

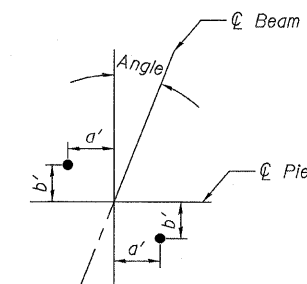
BARS s523(E), s524(E)  
& s528(E)



BAR s522(E)



BAR n521(E)



ANCHOR BOLT LAYOUT

Beam	Angle	a'	b'
SG1	21°39'15"	8 1/8"	3 1/4"
SG2	22°22'28"	8 1/8"	3 3/8"
SG3	23°05'11"	8"	3 3/8"

BILL OF MATERIAL

Bar	No.	Size	Length	Shape
d520(E)	112	#7	4'-1"	—
d521(E)	18	#7	2'-4"	—
*h520(E)	4	#8	13'-6"	—
h521(E)	20	#5	12'-1"	—
n520(E)	51	#9	10'-8"	—
n521(E)	10	#6	6'-6"	—
*p520(E)	5	#8	20'-0"	—
*p521(E)	10	#8	13'-2"	—
s520(E)	40	#6	14'-6"	□
s521(E)	44	#5	12'-0"	□
s522(E)	35	#5	3'-8"	□
s523(E)	13	#5	13'-7"	□
s524(E)	9	#5	8'-9"	□
s525(E)	3	#5	12'-5"	□
s526(E)	33	#5	8'-3"	□
s527(E)	5	#5	6'-11"	□
s528(E)	15	#5	11'-7"	□
t520(E)	17	#5	9'-8"	—
t521(E)	19	#8	9'-8"	—
u520(E)	12	#5	9'-1"	C
v520(E)	32	#9	12'-6"	—
v521(E)	19	#9	14'-5"	—
w520(E)	20	#5	4'-6"	—
w521(E)	20	#5	11'-6"	—
Test Pile Metal Shells	Each		1	
Structure Excavation	Cu. Yd.		61	
Concrete Structures	Cu. Yd.		50.9	
Reinforcement Bars, Epoxy Coated	Pound		9,750	
Furnishing Metal Shell Piles 12"x0.25"	Foot		385	
Driving Piles	Foot		385	

\* Cut to fit in field.

NOTES

1. Work this sheet with Sheet 51.

PIER 1 DETAILS  
STRUCTURE NO. 016-3241

TYLIN INTERNATIONAL	DESIGNED - MMB	REVISIONS		SHEET NO. 52	F.A.I. RTE. 55	SECTION 0711.2R & 1011.1BR	COUNTY COOK	TOTAL SHEETS 741	SHEET NO. 305
	CHECKED - AMD,	NAME	DATE						
	DRAWN - MMB								
	CHECKED - AMD,								
	DATE - 03/25/2011			71 SHEETS	CONTRACT NO. 60999		FED. ROAD DIST. NO. 1 ILLINOIS FED. AID PROJECT		

p:\01345\structure\016-3241\55c1pier1.dgn 6:27:46 PM 4/28/2011