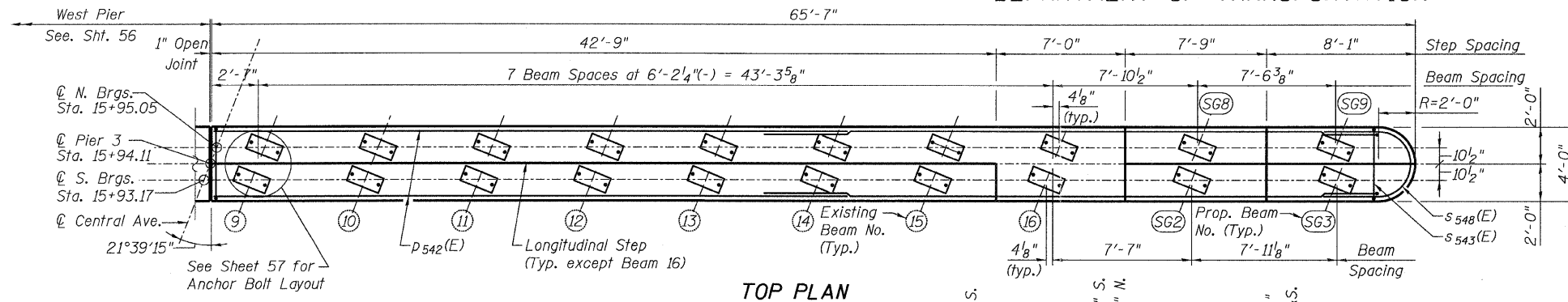
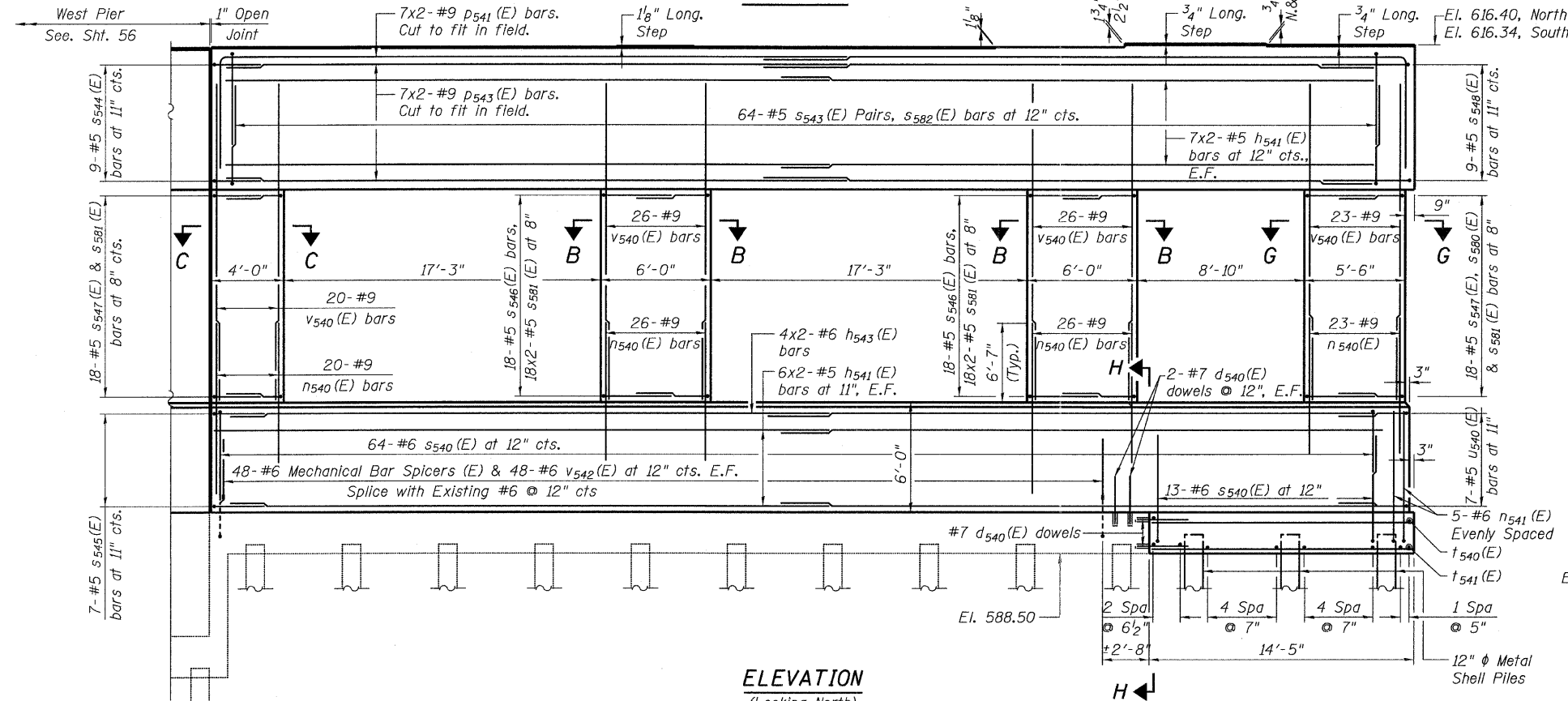


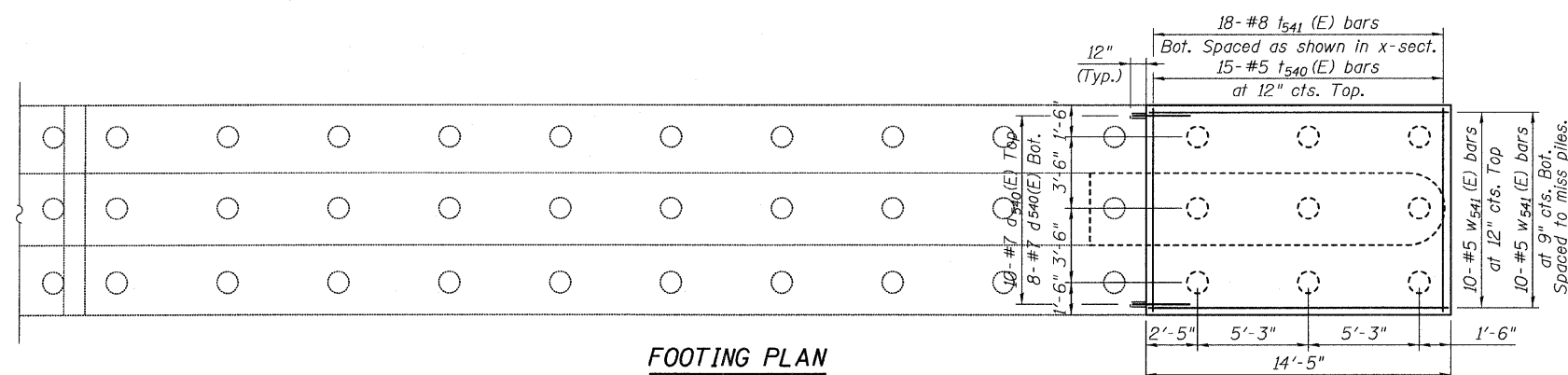
STATE OF ILLINOIS
DEPARTMENT OF TRANSPORTATION



TOP PLAN



ELEVATION
(Looking North)

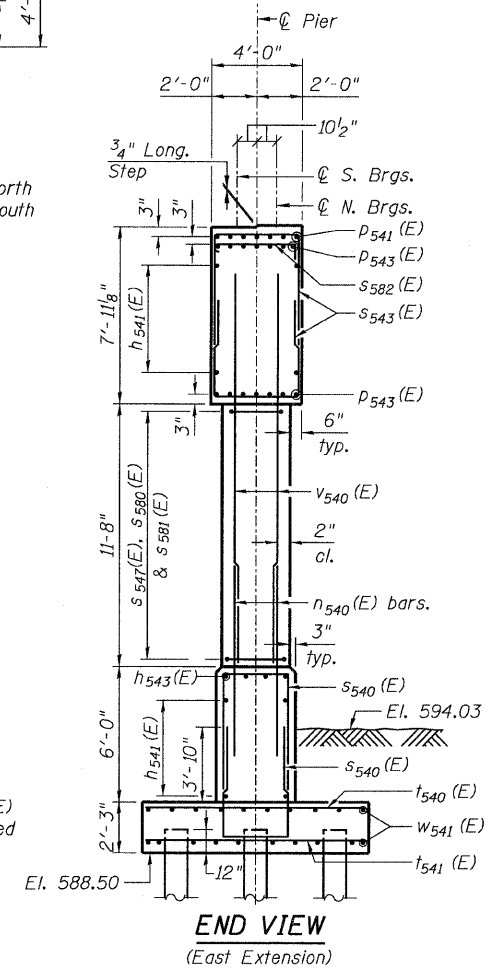


FOOTING PLAN

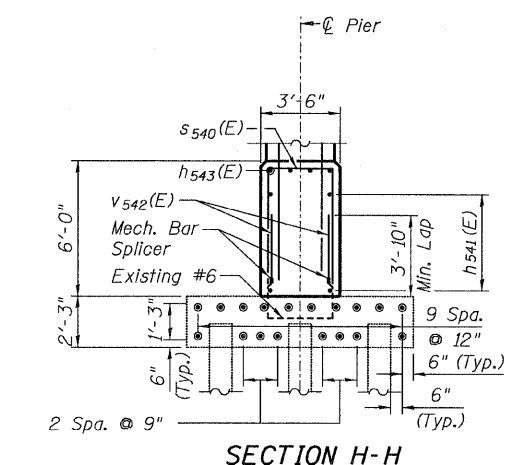


BRIDGE SEAT ELEVATIONS

South Bearings		North Bearings	
Girder Line	Seat Elevation	Girder Line	Seat Elevation
9	616.16	9	616.25
10	616.16	10	616.25
11	616.16	11	616.25
12	616.16	12	616.25
13	616.16	13	616.25
14	616.16	14	616.25
15	616.16	15	616.25
16	616.25	16	616.25
SG2	616.40	SG8	616.46
SG3	616.34	SG9	616.40



END VIEW
(East Extension)



SECTION H-H

NOTES

- Epoxy grout $d_{540}(E)$ and $d_{541}(E)$ bars according to Article 584 of the Standard Specifications. Drill to miss existing reinforcement. The epoxy grout and method of application shall be approved by the Engineer. All drilling and grouting of rebar to be included with the cost of "Reinforcement Bars, Epoxy Coated."
- Existing reinforcement shall be cleaned and incorporated into the new construction. Cost included with Concrete Removal.
- Space reinforcement in pier cap to miss anchor bolts.
- Space bottom reinforcement in footing to miss piles.
- For sections A-A, B-B & C-C see Sheet 55.
- For Bill of Materials, see Sheet 55.
- E.F. - denotes each face.
- Work this sheet with Sheets 56 & 57.

PILE DATA TABLE

Type: 12" ϕ x 0.25" Wall
Nominal Required Bearing: 270 kips
Allowable Resistance Available: 90 kips
Estimated Length: 41 ft
No. Production Piles: 8
No. Test Piles: 1

- Proposed Pile
- Existing Pile

PIER 3 WIDENING
EAST
STRUCTURE NO. 016-3241

TYLIN INTERNATIONAL	DESIGNED - MMB	REVISIONS		SHEET NO. 55	F.A.I. RTE.	SECTION	COUNTY	TOTAL SHEETS	SHEET NO.				
	CHECKED - AMD,	NAME	DATE		55					0711.2R & 1011.1BR	COOK	741	308
	DRAWN - MMB				71 SHEETS					CONTRACT NO. 60999			
	CHECKED - AMD,									FED. ROAD DIST. NO. 1	ILLINOIS	FED. AID PROJECT	
	DATE - 03/25/2011												

11-30157 AM
pi:\01345\structure\016-3241\55cplpier3e.dgn 4/28/2011 11:30:57 AM