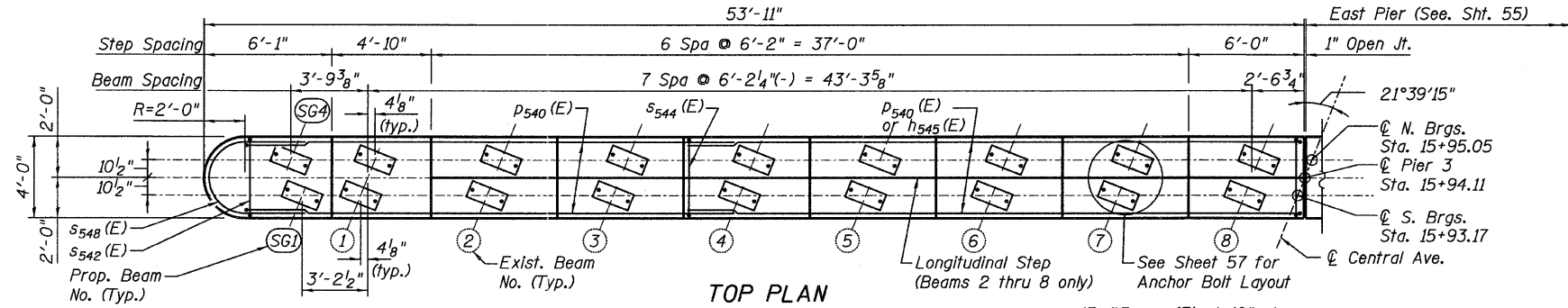


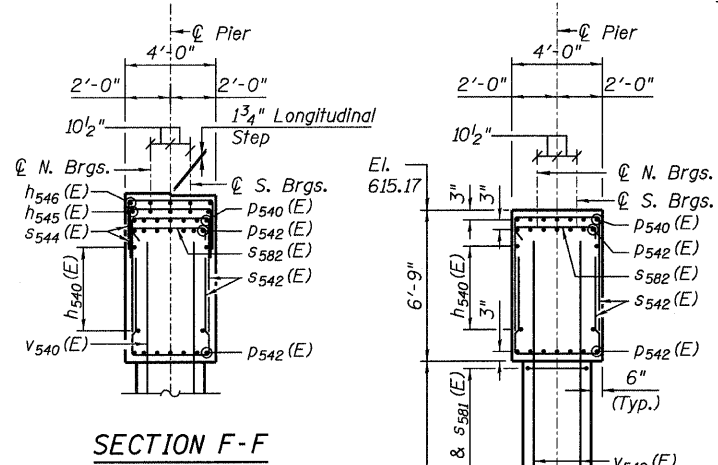
STATE OF ILLINOIS
DEPARTMENT OF TRANSPORTATION

53'-11"

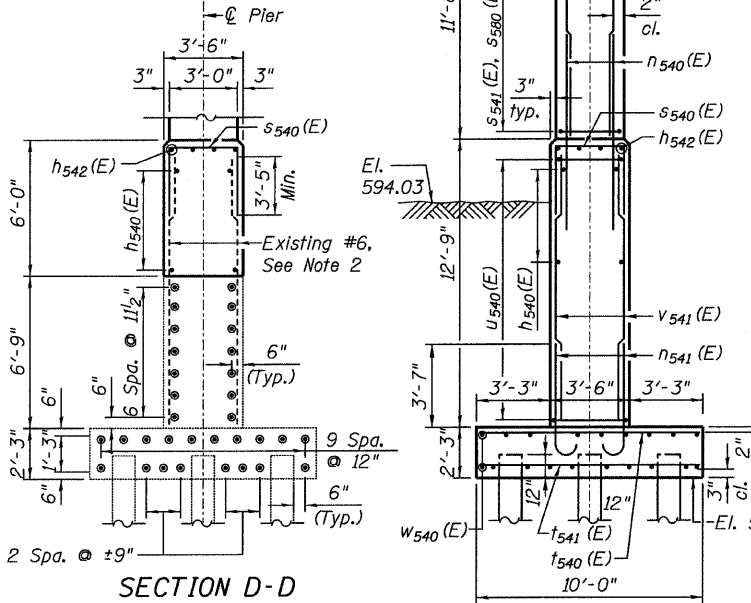
East Pier (See. Sht. 55)



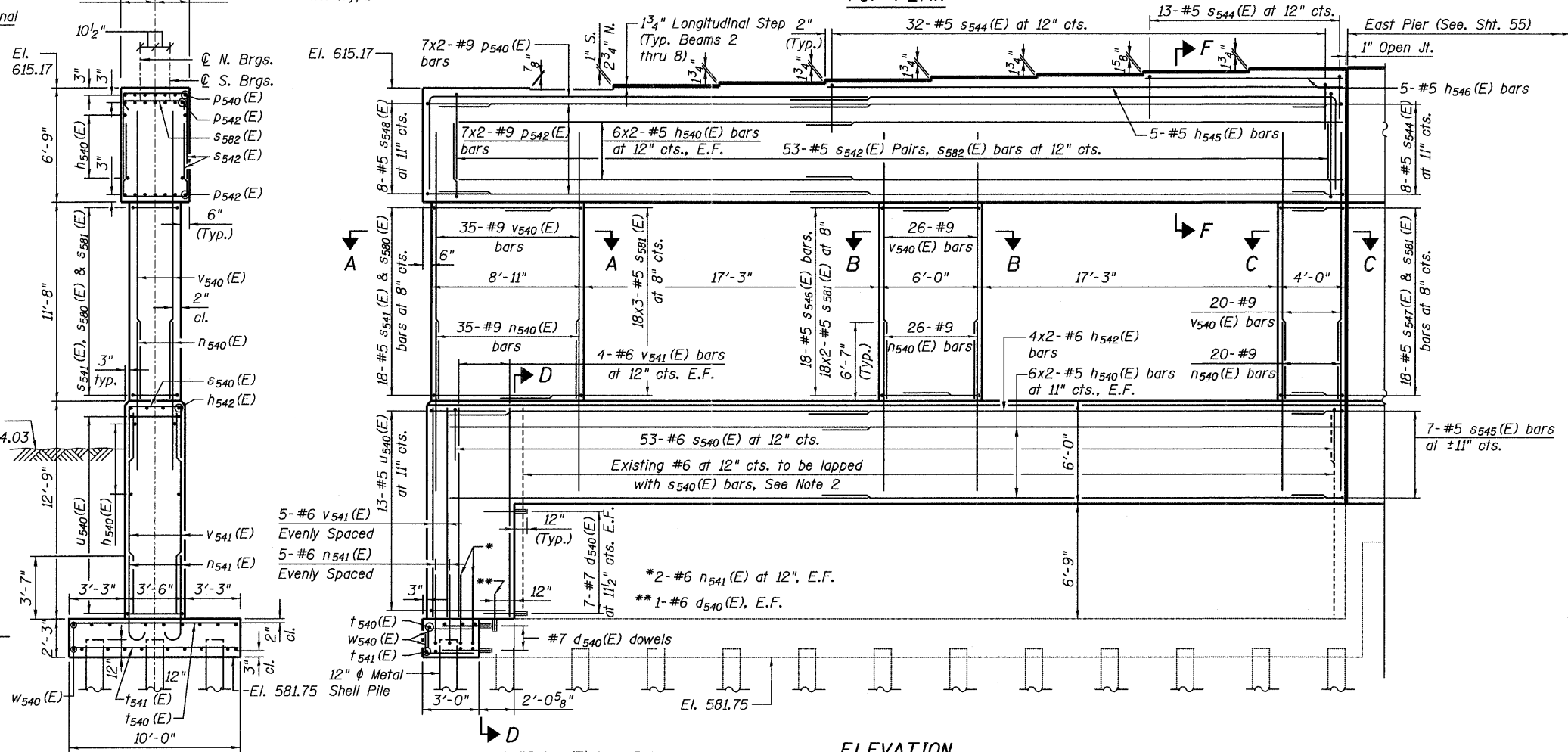
TOP PLAN



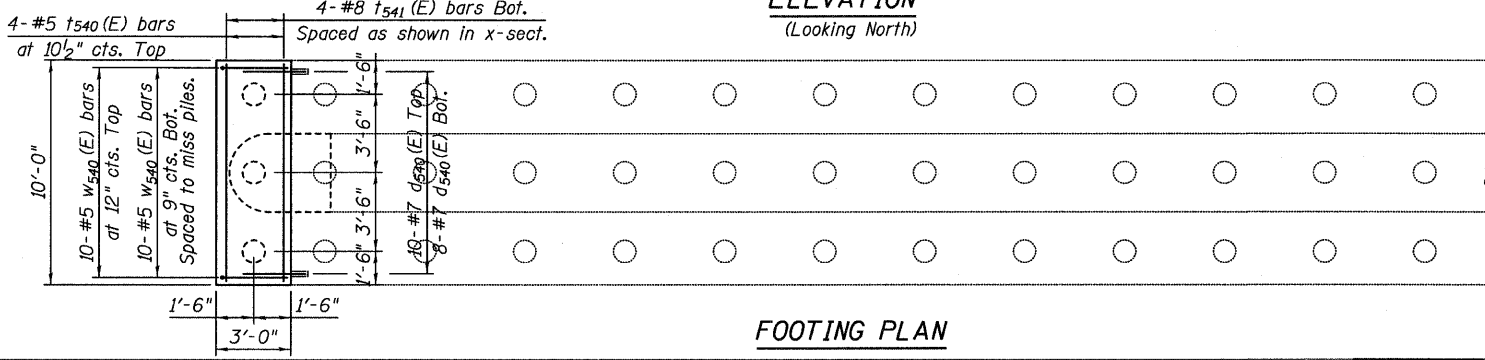
SECTION F-F



SECTION D-D



ELEVATION
(Looking North)



FOOTING PLAN

BRIDGE SEAT ELEVATIONS

Girder Line	South Bearings		North Bearings	
	Seat Elevation	Girder Line	Seat Elevation	Girder Line
SG1	615.17	SG4	615.17	
1	615.10	1	615.10	
2	615.18	2	615.33	
3	615.33	3	615.47	
4	615.47	4	615.62	
5	615.62	5	615.76	
6	615.76	6	615.91	
7	615.90	7	616.05	
8	616.05	8	616.19	

NOTES

1. Work this sheet with Sheets 55 & 57.
2. Existing reinforcement shall be cleaned and incorporated into the new construction. Cost included with Concrete Removal.

PIER 3 WIDENING
WEST
STRUCTURE NO. 016-3241

PILE DATA TABLE

Type: 12" φ x 0.25" Wall
Nominal Required Bearing: 270 klps
Allowable Resistance Available: 90 klps
Estimated Length: 41 ft
No. Production Piles: 3

- Proposed Pile
- Existing Pile

TYLIN INTERNATIONAL	DESIGNED - MMB	REVISIONS		SHEET NO. 56	F.A.I. RTE.	SECTION	COUNTY	TOTAL SHEETS	SHEET NO.	
	CHECKED - AMD,	NAME	DATE		71 SHEETS	55	0711.2R & 1011.1BR	COOK	741	309
	DRAWN - MMB				CONTRACT NO. 60999					
	CHECKED - AMD,				FED. ROAD DIST. NO. 1 ILLINOIS FED. AID PROJECT					
	DATE - 03/25/2011				4/28/2011					