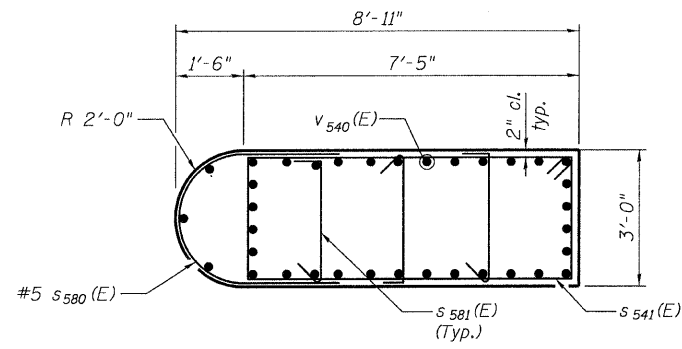
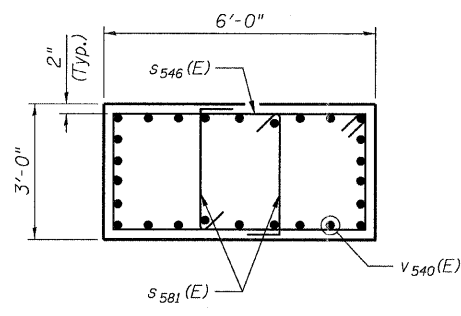


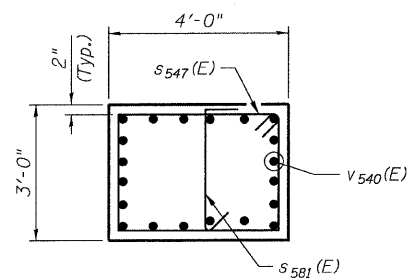
STATE OF ILLINOIS
DEPARTMENT OF TRANSPORTATION



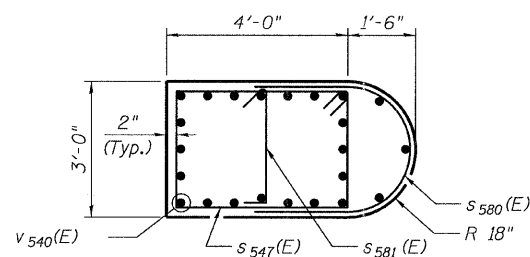
SECTION A-A



SECTION B-B

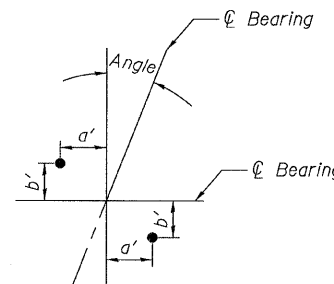


SECTION C-C



SECTION G-G

MINIMUM LAP	
#5	3'-8"
#6	4'-5"
#9	9'-8"



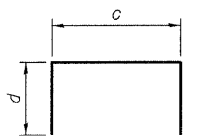
ANCHOR BOLT LAYOUT

PIER #3 S. BEARINGS

Beam	Angle	a'	b'
SG1	21°39'15"	8 ⁵ / ₈ "	3 ³ / ₈ "
1 Thru 16	21°39'15"	8 ⁵ / ₈ "	3 ³ / ₈ "
SG2	22°22'28"	8 ¹ / ₂ "	3 ¹ / ₂ "
SG3	23°05'11"	8 ¹ / ₂ "	3 ⁵ / ₈ "

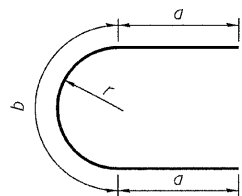
PIER #3 N. BEARINGS

Beam	Angle	a'	b'
SG4	20°58'38"	8 ⁵ / ₈ "	3 ¹ / ₄ "
1 Thru 16	21°39'15"	8 ⁵ / ₈ "	3 ³ / ₈ "
SG8	21°39'15"	8 ⁵ / ₈ "	3 ³ / ₈ "
SG9	21°39'15"	8 ⁵ / ₈ "	3 ³ / ₈ "



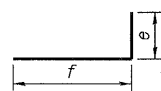
Bar	c	d
s540(E)	3'-2"	5'-6"
s542(E)	3'-8"	4'-3"
s543(E)	3'-8"	4'-10"
s544(E)	3'-8"	2'-2"
s545(E)	3'-2"	2'-2"

BARS s540(E),
s542(E) thru s545(E)



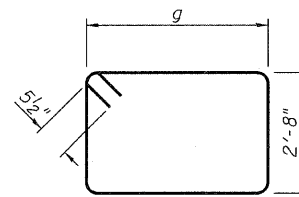
Bar	a	b	r
s548(E)	2'-2"	5'-6"	1'-9"
s580(E)	2'-2"	3'-11"	1'-3"
u540(E)	2'-9"	4'-9"	1'-6"

BARS s548(E), s580(E)
& u540(E)



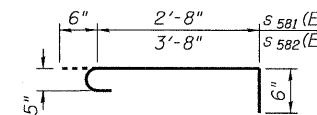
Bar	e	f
p540(E)	6'-0"	31'-9"
p541(E)	6'-0"	37'-8"
w540(E)	1'-10"	2'-8"

BARS p540(E), p541(E)
& w540(E)

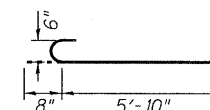


Bar	g
s541(E)	7'-1"
s546(E)	5'-8"
s547(E)	3'-8"

BARS s541(E), s546(E)
& s547(E)



BARS s581(E) & s582(E)



BAR n541(E)

BILL OF MATERIAL

Bar	No.	Size	Length	Shape
d540(E)	56	#7	4'-1"	—
h540(E)	48	#5	27'-9"	—
h541(E)	52	#5	33'-6"	—
h542(E)	8	#6	28'-1"	—
h543(E)	8	#6	33'-10"	—
h545(E)	5	#5	30'-4"	—
h546(E)	5	#5	11'-10"	—
n540(E)	176	#9	10'-8"	—
n541(E)	14	#6	6'-6"	—
p540(E)	14	#9	37'-9"	—
p541(E)	14	#9	43'-8"	—
p542(E)	28	#9	31'-9"	—
p543(E)	28	#9	37'-8"	—
s540(E)	130	#6	14'-2"	—
s541(E)	18	#5	20'-5"	—
s542(E)	106	#5	12'-2"	—
s543(E)	128	#5	13'-4"	—
s544(E)	62	#5	8'-0"	—
s545(E)	14	#5	7'-6"	—
s546(E)	54	#5	17'-7"	—
s547(E)	54	#5	13'-7"	—
s548(E)	17	#5	9'-10"	—
s580(E)	36	#5	8'-3"	—
s581(E)	216	#5	3'-8"	—
s582(E)	117	#5	4'-8"	—
t540(E)	19	#5	9'-8"	—
t541(E)	22	#8	9'-8"	—
u540(E)	20	#5	10'-3"	—
v540(E)	176	#9	15'-9"	—
v541(E)	13	#6	12'-5"	—
v542(E)	96	#6	4'-6"	—
w540(E)	20	#5	4'-6"	—
w541(E)	20	#5	14'-1"	—
Test Pile Metal Shells	Each		1	
Structure Excavation	Cu Yd		79	
Concrete Structures	Cu Yd		293.9	
Reinforcement Bars, Epoxy Coated	Pound		43,860	
Furnishing Metal Shell Piles 12"x0.25"	Foot		451	
Driving Piles	Foot		451	
Concrete Sealer	Sq Ft		5,109	
Mechanical Splitters	Each		96	

NOTES

1. Work this sheet with Sheets 55 & 56.

PIER 3 DETAILS
STRUCTURE NO. 016-3241

TYLIN INTERNATIONAL	DESIGNED - MMB	REVISIONS		SHEET NO. 57	F.A.I. RTE.	SECTION	COUNTY	TOTAL SHEETS	SHEET NO.					
	CHECKED - AMD,	NAME	DATE		55					0711.2R & 1011.1BR	COOK	741	310	
	DRAWN - MMB				71 SHEETS					CONTRACT NO. 60999				
	CHECKED - AMD,				FED. ROAD DIST. NO. 1 ILLINOIS FED. AID PROJECT									
	DATE - 03/25/2011													