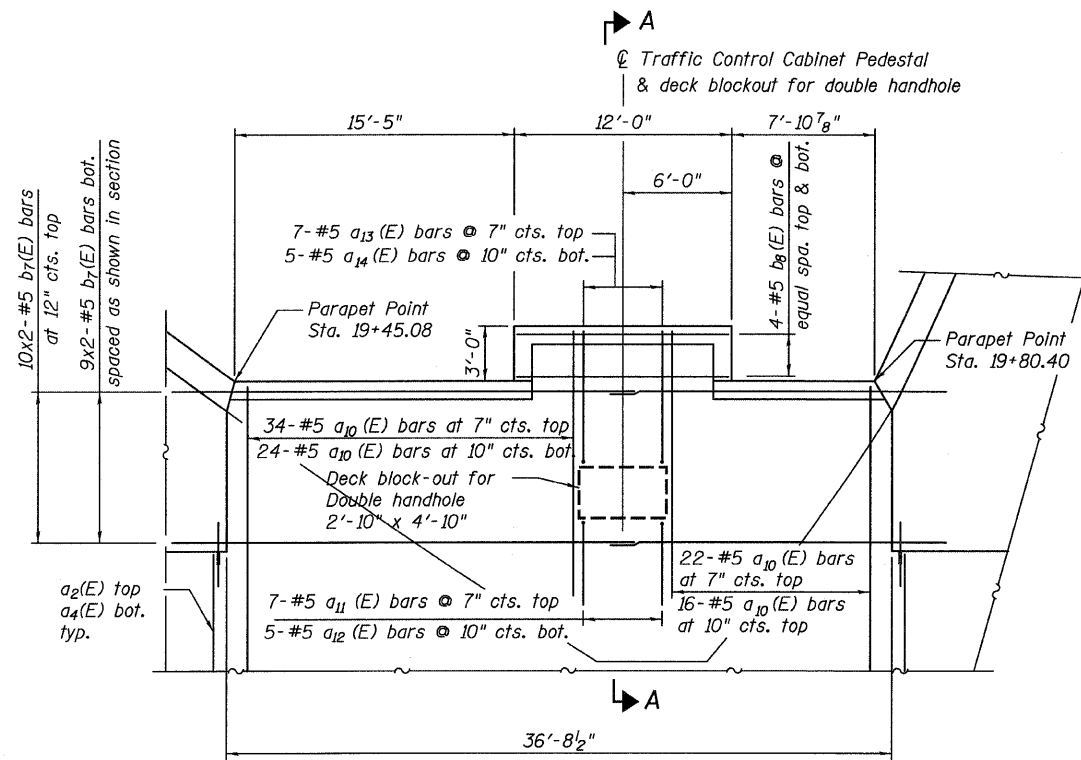
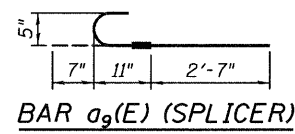


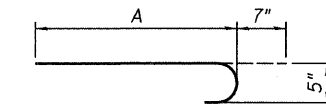
STATE OF ILLINOIS  
DEPARTMENT OF TRANSPORTATION



DECK BLOCKOUT PLAN

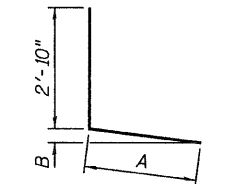


BAR a<sub>9</sub>(E) (SPLICER)



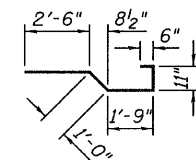
BARS a<sub>10</sub>(E), a<sub>11</sub>(E) & a<sub>13</sub>(E)

BAR	A
a <sub>10</sub> (E)	6'-7"
a <sub>11</sub> (E)	5'-0"
a <sub>13</sub> (E)	7'-0"

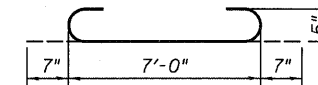


BAR d<sub>2</sub>(E) & d<sub>3</sub>(E)

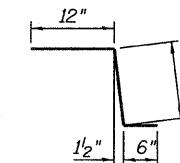
BAR	A	B
d <sub>2</sub> (E)	1'-6"	3'-3 1/4"
d <sub>3</sub> (E)	4'-5"	2'-3 1/4"



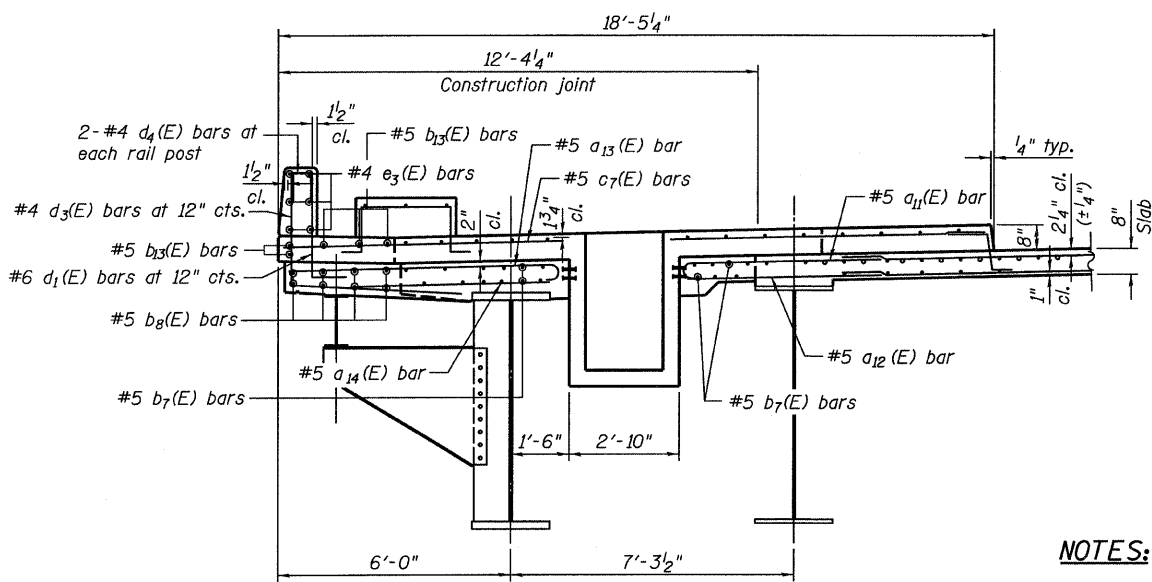
BAR x<sub>1</sub>(E)



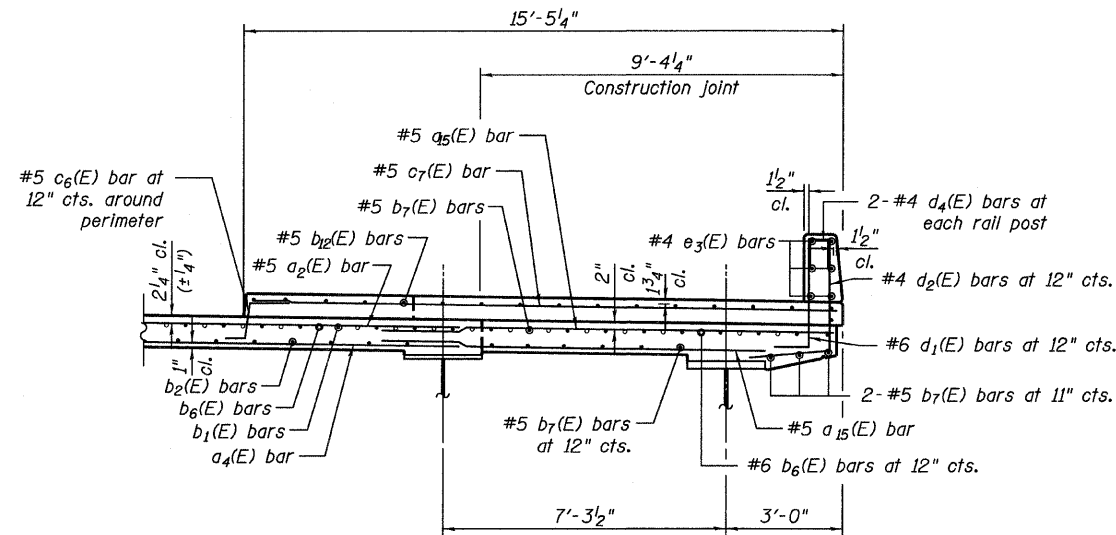
BAR a<sub>8</sub>(E)



BAR c<sub>6</sub>(E)

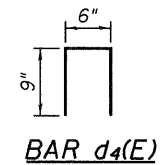


SECTION A-A

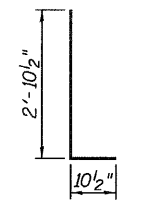


SECTION THRU EAST SIDEWALK

(Looking North)



BAR d<sub>4</sub>(E)



BAR d<sub>1</sub>(E)

NOTES:

1. For locations of Traffic Signal Appurtenances, see Sheet 66.
2. For sidewalk details see Sheets 64 & 65.
3. Bars indicated thus "10x2-#5" etc. indicate 10 lines of bars with 2 lengths per line.
4. Refer to Sheet 42 for Bill of Materials.

LEGEND

- I.F. - Denotes inside face of parapet.  
O.F. - Denotes outside face of parapet.

SUPERSTRUCTURE DETAILS  
STRUCTURE NO. 016-0724

TYLIN INTERNATIONAL

DESIGNED -	REVISIONS
CHECKED - AMD,	NAME
DRAWN -	DATE
CHECKED -	
DATE - 03/25/2011	

SHEET NO. 43	F.A.I. RTE.	SECTION	COUNTY	TOTAL SHEETS	SHEET NO.
239 SHEETS	55	0711.2R & 1011.1BR	COOK	741	367
			CONTRACT NO. 60999		
FED. ROAD DIST. NO. 1 ILLINOIS FED. AID PROJECT					

5/9/2011 9:29:07 AM p:\01345\structure\02\_Central\_Ave\_016-0724\155c2deck.dwg