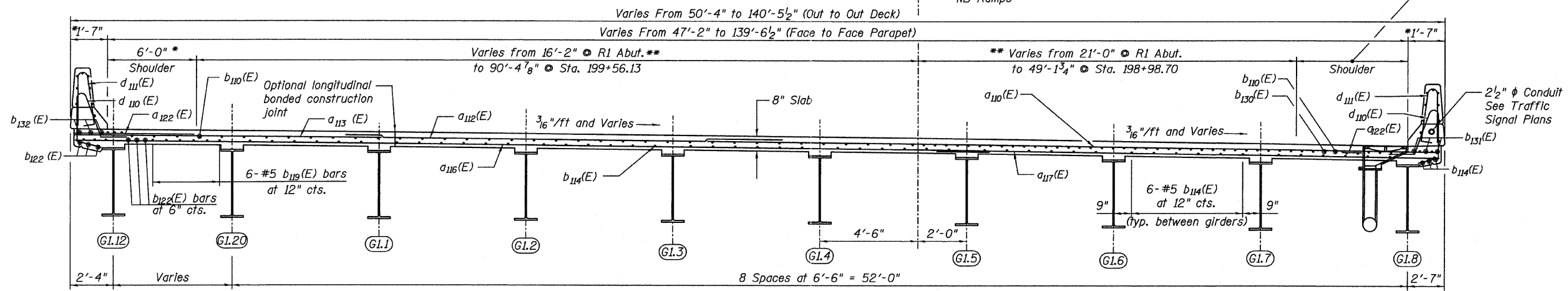


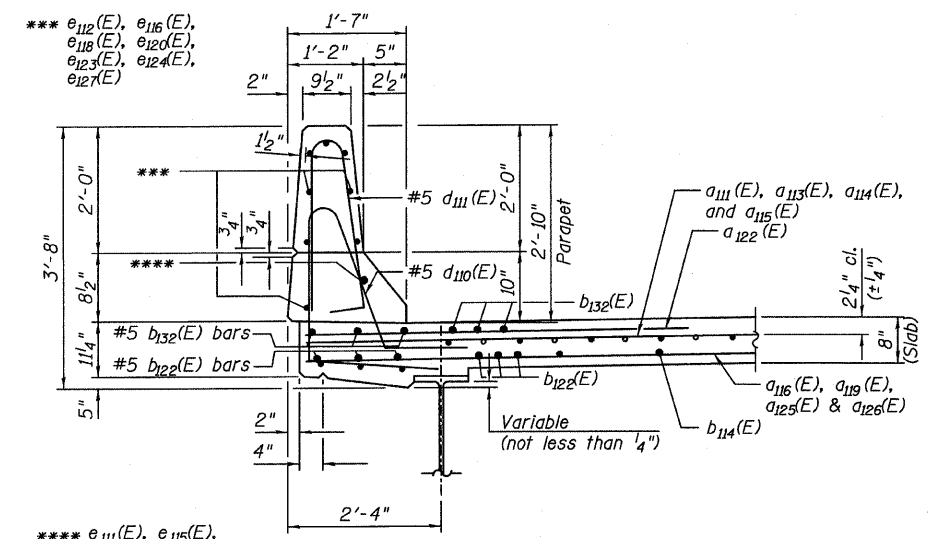
STATE OF ILLINOIS
DEPARTMENT OF TRANSPORTATION

* 4'-0";
* Varies 4'-0" " to 5'-3" ";
* Varies 5'-3" " to 7'-1 1/2" ";
R1 Abut. to 198+53.05
Sta. 198+53.05 to 198+65.50
Sta. 198+65.50 to 198+97.88

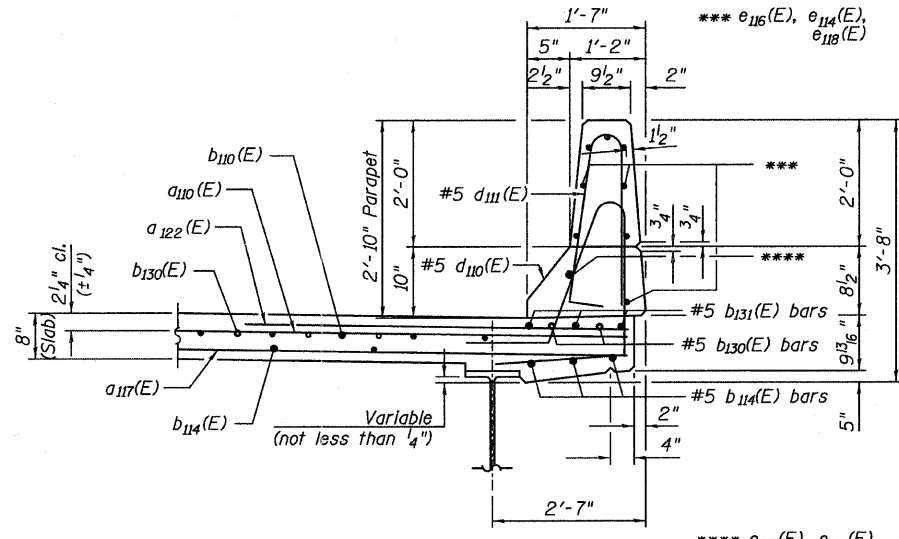


SECTION A-A
(Looking East)

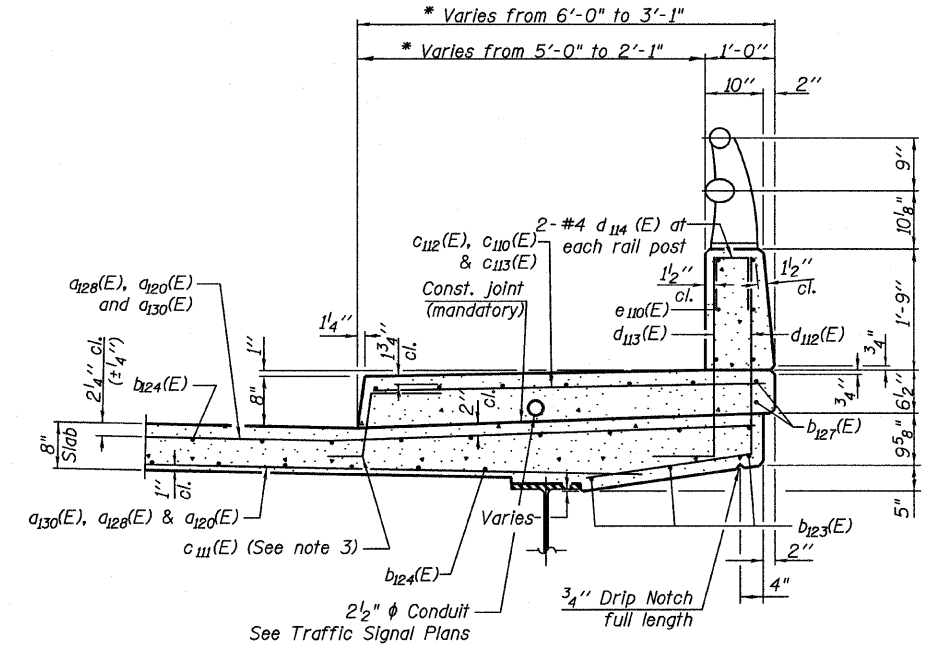
* Measurement perpendicular to parapet
** Measurement perpendicular to alignment



SECTION THRU NORTH PARAPET



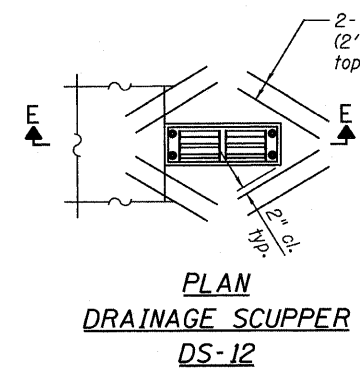
SECTION THRU SOUTH PARAPET



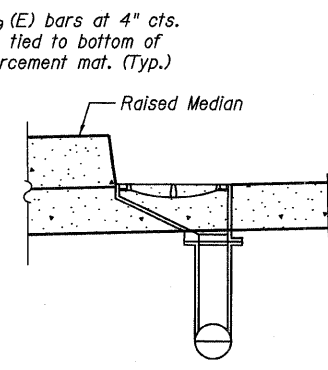
SECTION THRU SIDEWALK

NOTES:

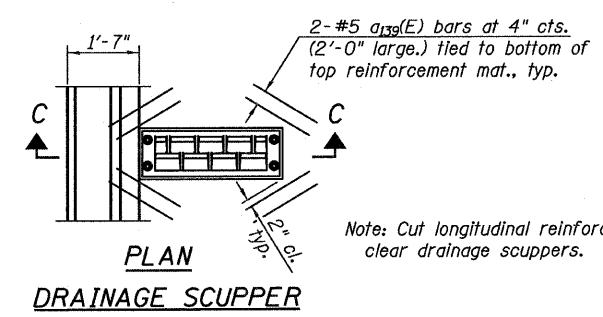
1. For location of Section A-A, see Sheets 44 and 45.
2. Work this sheet with Sheets 44, 45, 46A & 47.
3. In lieu of bottom leg c_{III}(E) bars may be cored and set according to article 509.06 of the Standard Specifications. Cored holes shall be roughened or scored per Manufacturer's Recommendations. Maximum depth of cored hole shall not exceed 6".



PLAN DRAINAGE SCUPPER DS-12

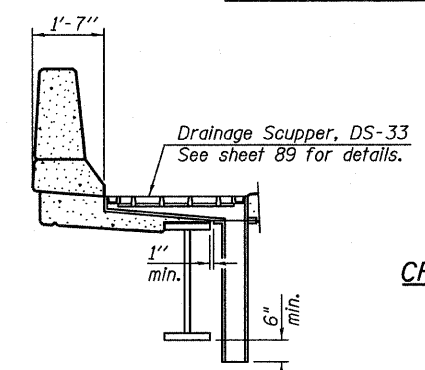


SECTION E-E



PLAN DRAINAGE SCUPPER DS-33

Note: Cut longitudinal reinforcement to clear drainage scuppers.



SECTION C-C

**CROSS SECTIONS & DETAILS
RAMP 1 FLARE
SHEET 1 OF 2
STRUCTURE NO. 016-0724**

TYLIN INTERNATIONAL

DESIGNED - AMD		REVISIONS	
CHECKED - PF	NAME	DATE	
DRAWN - MU			
CHECKED - AMD,			
DATE - 03/25/2011			

SHEET NO. 46	F.A.I. RTE.	SECTION	COUNTY	TOTAL SHEETS	SHEET NO.
	55	0711.2R & 1011.1BR	COOK	741	370
239 SHEETS	CONTRACT NO. 60999				
	FED. ROAD DIST. NO. 1 ILLINOIS FED. AID PROJECT				

5/12/15 PM
p:\01345\structure\2.central_ave_016-0724_1551\decks\sdan