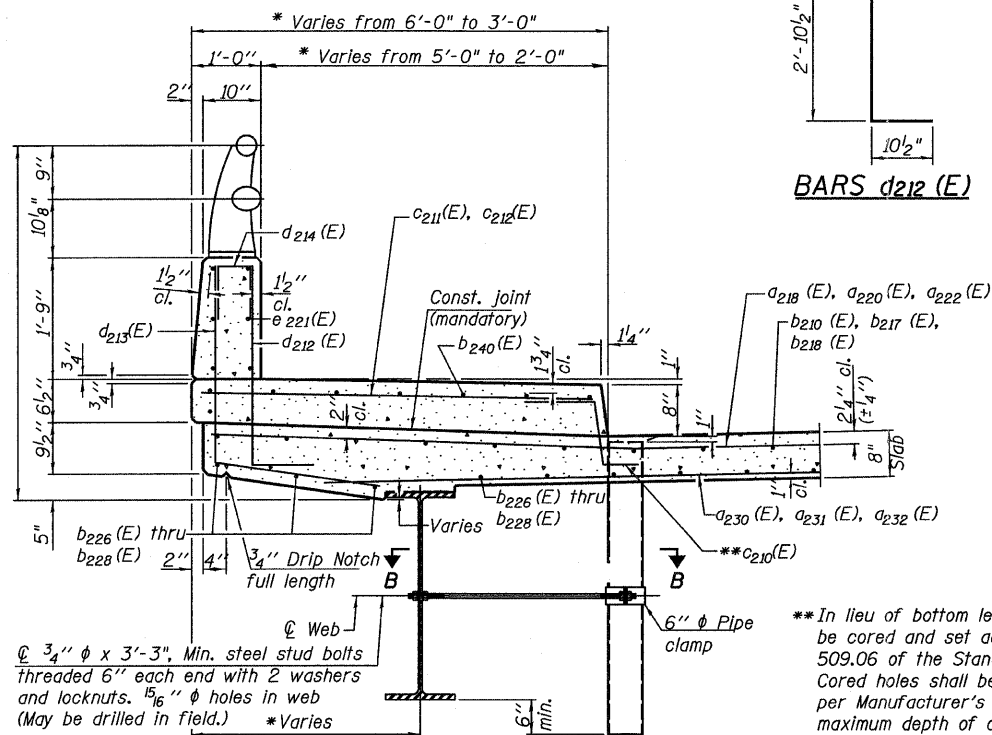


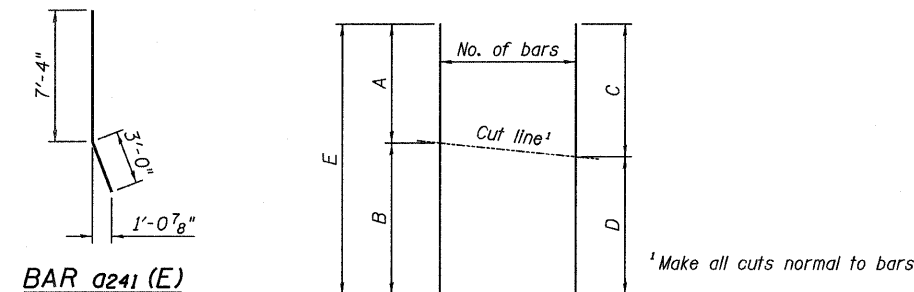
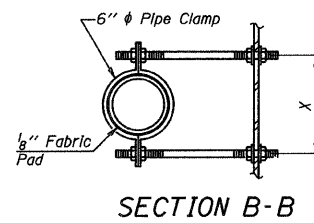
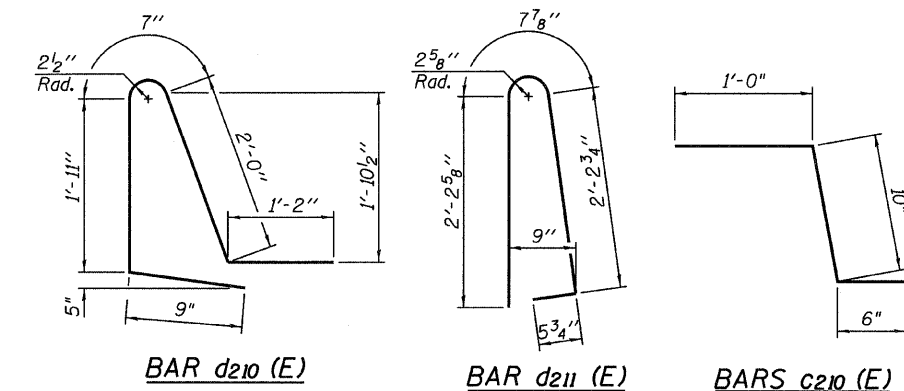
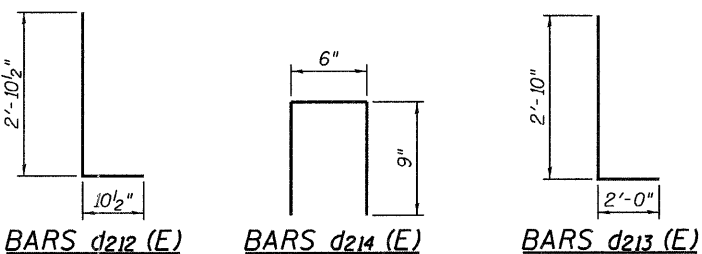
STATE OF ILLINOIS
DEPARTMENT OF TRANSPORTATION

BILL OF MATERIAL

Bar	No.	Size	Length (ft)	Shape
d210 (E)	130	#6	32'-7"	
d211 (E)	262	#6	25'-9"	
d212 (E)	36	#6	24'-0"	
d213 (E)	108	#6	20'-0"	
d214 (E)	6	#6	26'-0"	
d215 (E)	78	#6	53'-0"	
d216 (E)	15	#6	54'-0"	
d217 (E)	9	#6	30'-9"	
d218 (E)	94	#6	39'-7"	
d219 (E)	56	#6	36'-4"	
d220 (E)	56	#6	30'-6"	
d221 (E)	11	#6	41'-10"	
d222 (E)	22	#6	25'-0"	
d223 (E)	7	#6	30'-0"	
d224 (E)	34	#6	27'-4"	
d225 (E)	68	#6	25'-6"	
d226 (E)	24	#6	42'-0"	
d227 (E)	10	#6	40'-0"	
d228 (E)	6	#6	32'-0"	
d229 (E)	9	#6	47'-0"	
d230 (E)	28	#6	39'-0"	
d231 (E)	70	#6	11'-2"	
d232 (E)	8	#6	38'-0"	
d233 (E)	212	#6	35'-8"	
d234 (E)	27	#6	39'-8"	
d235 (E)	158	#6	22'-6"	
d240 (E)	32	#5	2'-0"	
d241 (E)	412	#5	10'-4"	
d242 (E)	175	#6	6'-6"	
b210 (E)	417	#5	27'-4"	
b211 (E)	11	#5	42'-0"	
b212 (E)	6	#5	50'-0"	
b213 (E)	5	#5	53'-0"	
b214 (E)	5	#5	60'-0"	
b215 (E)	2	#5	20'-0"	
b216 (E)	42	#5	23'-11"	
b217 (E)	4	#5	42'-0"	
b218 (E)	4	#5	28'-0"	
b219 (E)	12	#5	28'-7"	
b220 (E)	196	#5	20'-7"	
b221 (E)	370	#5	31'-4"	
b222 (E)	36	#5	27'-8"	
b223 (E)	9	#5	39'-0"	
b224 (E)	9	#5	45'-0"	
b225 (E)	6	#5	57'-0"	
b226 (E)	18	#5	35'-0"	
b227 (E)	2	#5	27'-0"	
b228 (E)	6	#5	47'-0"	
b229 (E)	4	#5	15'-0"	
b230 (E)	48	#5	26'-5"	
b231 (E)	7	#6	38'-8"	
b240 (E)	12	#5	27'-8"	
c210 (E)	62	#5	2'-4"	
c211 (E)	26	#5	5'-6"	
c212 (E)	15	#5	8'-0"	
d210 (E)	291	#5	6'-5"	
d211 (E)	291	#5	5'-7"	
d212 (E)	56	#6	3'-9"	
d213 (E)	56	#4	4'-10"	
d214 (E)	12	#4	2'-0"	
d215 (E)	3	#6	7'-0"	
d216 (E)	3	#6	4'-9"	
d217 (E)	3	#6	7'-9"	
d218 (E)	3	#6	3'-0"	
e210 (E)	2	#4	33'-1"	
e211 (E)	2	#8	34'-8"	
e212 (E)	28	#4	15'-9"	
e213 (E)	16	#4	13'-1"	
e214 (E)	2	#8	13'-1"	
e215 (E)	1	#8	15'-2"	
e216 (E)	8	#4	15'-2"	
e217 (E)	16	#4	13'-9"	
e218 (E)	18	#5	15'-7"	
e222 (E)	2	#8	22'-1"	
e223 (E)	2	#4	20'-6"	
e224 (E)	14	#4	19'-4"	
e225 (E)	16	#4	10'-10"	
e226 (E)	2	#8	10'-10"	
e229 (E)	3	#8	26'-7"	
e230 (E)	3	#4	24'-6"	
e231 (E)	28	#4	17'-0"	
e232 (E)	2	#8	13'-10"	
Reinforcement Bars, Epoxy Coated	LB		120,840	
Concrete Superstructure	CU YD		401.9	
Bridge Deck Grooving	SQ YD		1,212	
Protective Coat	SQ YD		1,536	

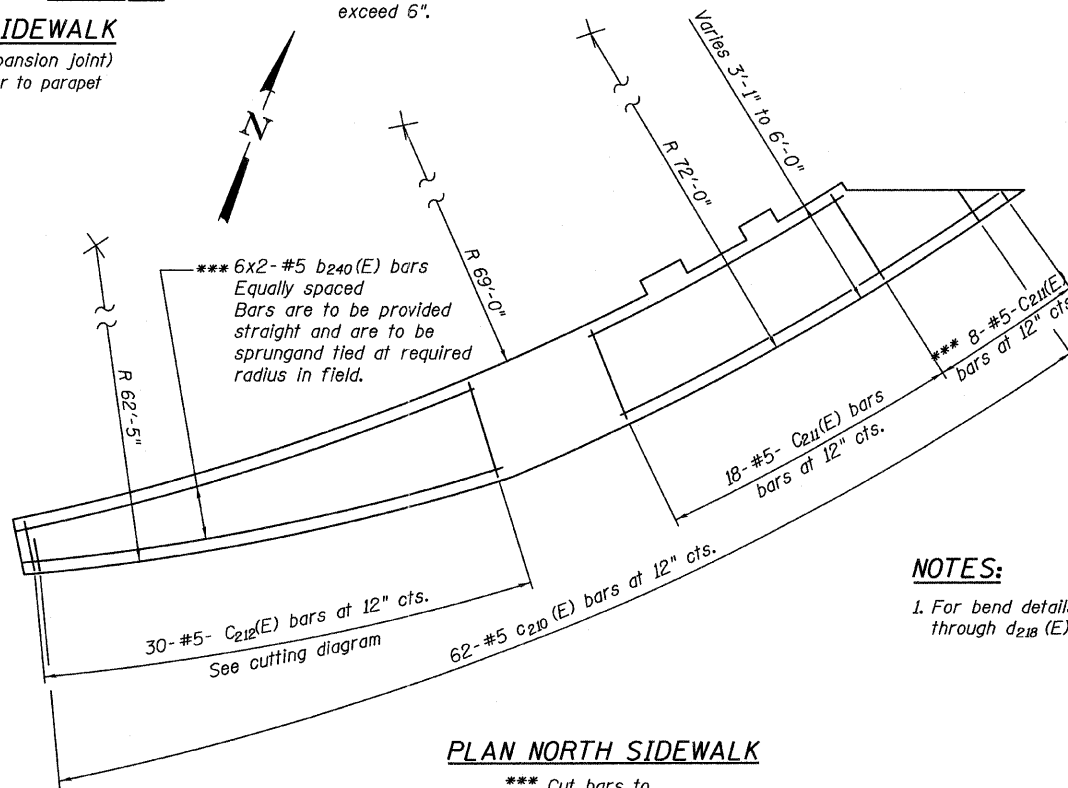


SECTION THRU SIDEWALK
(Looking East, near expansion joint)
* Measurement perpendicular to parapet



* Make all cuts normal to bars

** In lieu of bottom leg c210(E) bars may be cored and set according to article 509.06 of the Standard Specifications. Cored holes shall be roughened or scored per Manufacturer's Recommendations, maximum depth of cored hole shall not exceed 6".



PLAN NORTH SIDEWALK

*** Cut bars to fit in field

BAR	A	B	C	D	E	No. bars
d212 (E)	4'-0"	20'-0"	11'-11"	12'-1"	24'-0"	36
d214 (E)	6'-0"	20'-0"	12'-4"	13'-8"	26'-0"	6
d215 (E)	9'-0"	44'-0"	26'-3"	26'-9"	53'-0"	39
d216 (E)	10'-0"	44'-0"	26'-5"	27'-7"	54'-0"	15
d217 (E)	6'-6"	24'-3"	14'-11"	15'-10"	30'-9"	9
d220 (E)	8'-6"	22'-0"	15'-2"	15'-4"	30'-6"	28
d221 (E)	10'-4"	31'-6"	20'-5"	21'-5"	41'-10"	11
d223 (E)	6'-0"	24'-0"	14'-4"	15'-8"	30'-0"	7
d224 (E)	3'-10"	23'-6"	13'-6"	13'-10"	27'-4"	34
d226 (E)	6'-0"	36'-0"	20'-8"	21'-4"	42'-0"	24
d227 (E)	8'-0"	32'-0"	19'-5"	20'-7"	40'-0"	10
d228 (E)	7'-0"	25'-0"	15'-3"	16'-9"	32'-0"	6
d229 (E)	9'-0"	38'-0"	22'-8"	24'-4"	47'-0"	9
d230 (E)	12'-0"	27'-0"	19'-10"	20'-2"	39'-0"	28
d232 (E)	9'-0"	29'-0"	18'-4"	19'-8"	38'-0"	8
d234 (E)	17'-4"	22'-4"	19'-9"	19'-11"	39'-8"	27
b211 (E)	7'-0"	35'-0"	20'-4"	21'-8"	42'-0"	11
b212 (E)	14'-0"	36'-0"	24'-0"	26'-0"	50'-0"	6
b213 (E)	15'-0"	38'-0"	25'-3"	27'-9"	53'-0"	5
b214 (E)	18'-0"	42'-0"	28'-8"	31'-4"	60'-0"	5
b217 (E)	16'-0"	26'-0"	20'-3"	21'-9"	42'-0"	4
b218 (E)	8'-0"	20'-0"	13'-2"	14'-10"	28'-0"	4
b223 (E)	7'-0"	32'-0"	18'-10"	20'-2"	39'-0"	9
b224 (E)	7'-0"	38'-0"	21'-8"	23'-4"	45'-0"	9
b225 (E)	15'-0"	42'-0"	26'-9"	30'-3"	57'-0"	6
b227 (E)	9'-0"	18'-0"	12'-0"	15'-0"	27'-0"	2
b228 (E)	15'-0"	32'-0"	22'-5"	24'-7"	47'-0"	6
c212 (E)	2'-6"	5'-6"	4'-0"	4'-0"	8'-0"	15

BAR CUTTING DIAGRAM

NOTES:

1. For bend details for bars d215 (E) through d218 (E) See Sheet 61.

CROSS SECTIONS & DETAILS
RAMP 2 FLARE
SHEET 2 OF 2
STRUCTURE NO. 016-0724

TYLIN INTERNATIONAL

DESIGNED -	AMD	REVISIONS	
CHECKED -	PDF	NAME	DATE
DRAWN -	PK		
CHECKED -	AMD,		
DATE -	03/25/2011		

SHEET NO. 50A	F.A.I. RTE.	SECTION	COUNTY	TOTAL SHEETS	SHEET NO.
	239 SHEETS	55	0711.2R & 1011.1BR	COOK	741
CONTRACT NO. 60999					
FED. ROAD DIST. NO. 1 ILLINOIS FED. AID PROJECT					

5/10/2011

pi:\01345\structure\02_Central_Ave_016-0724\5512decksec2.dgn

5/5/3/38 PM