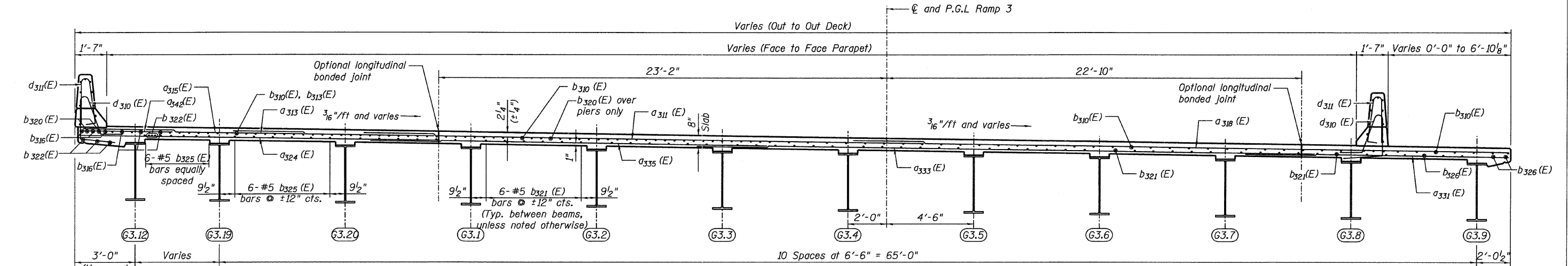
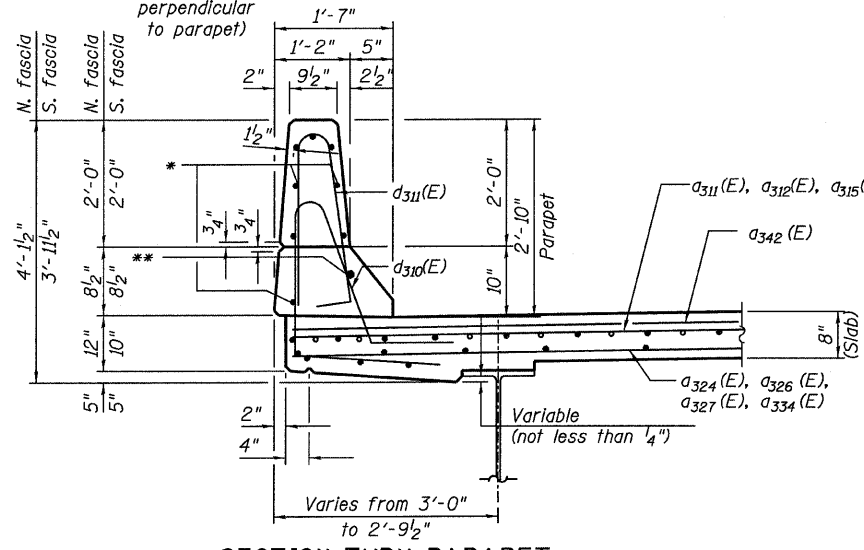


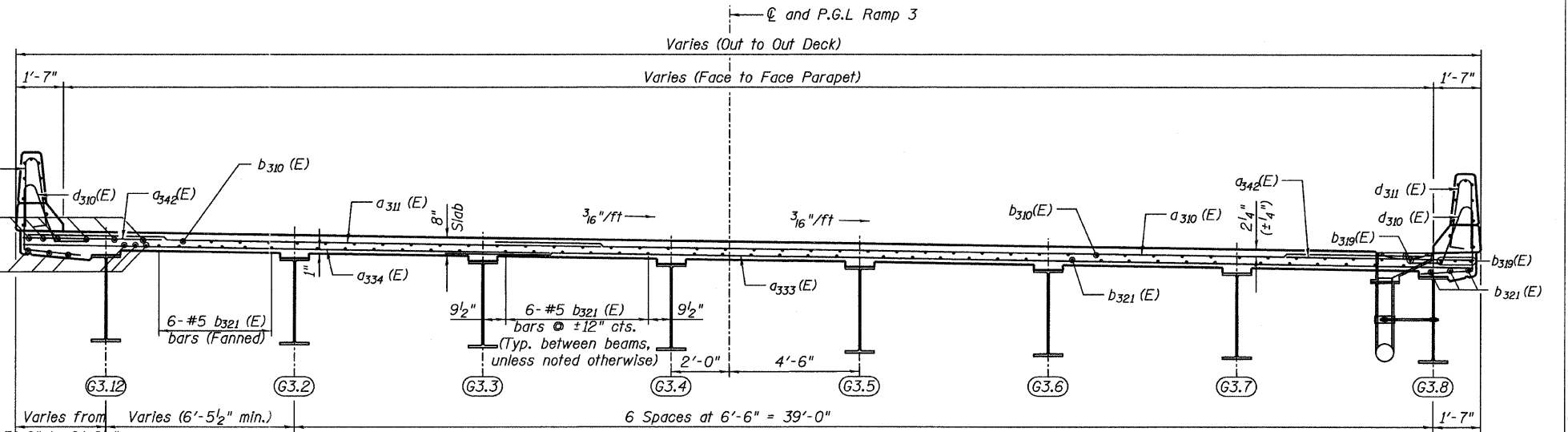
STATE OF ILLINOIS
DEPARTMENT OF TRANSPORTATION



SECTION A-A
(Looking East)



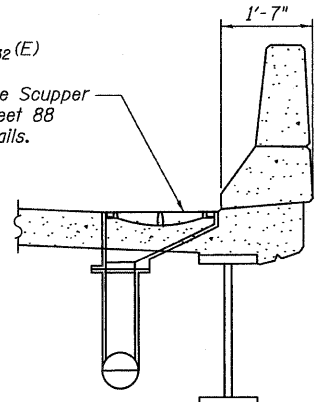
SECTION THRU PARAPET
(Looking East)



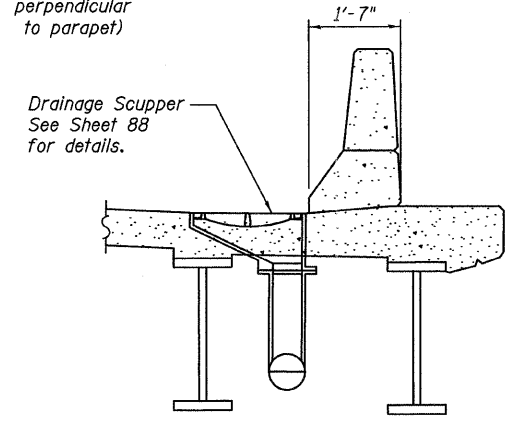
SECTION B-B
(Looking East)

* e310 (E), e312 (E), e313 (E), e319 (E), e320(E), e325(E), e330 (E), e331 (E)

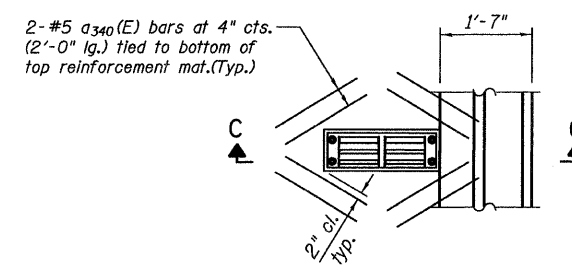
** e311 (E), e314 (E), e318 (E), e322(E), e326(E), e329(E), e332(E)



SECTION C-C
(Typ.)



SECTION C-C
(Scupper 3.2)



PLAN
DRAINAGE SCUPPER
DS-12

NOTES:

1. For location of Section A-A and B-B, see Sheets 52 and 53.
2. Work this sheet with Sheets 52, 53, 54A & 55.
3. All deck construction joints shall be bonded construction joints.
4. See Sheet 60 for concrete parapet transition details.

CROSS SECTION & DETAILS
RAMP 3 FLARE
SHEET 1 OF 2
STRUCTURE NO. 016-0724

TYLIN INTERNATIONAL

DESIGNED - AMD	REVISIONS	
CHECKED - PDF	NAME	DATE
DRAWN - PK		
CHECKED - AMD,		
DATE - 03/25/2011		

SHEET NO. 54	F.A.I. RTE.	SECTION	COUNTY	TOTAL SHEETS	SHEET NO.
	55	0711.2R & 1011.1BR	COOK	741	378
239 SHEETS	CONTRACT NO. 60999				
FED. ROAD DIST. NO. 1 ILLINOIS FED. AID PROJECT					

pi:01345\structure\2 Central Ave. 016-0724-155f3decksec.dgn 5/10/2011 8:41:30 AM