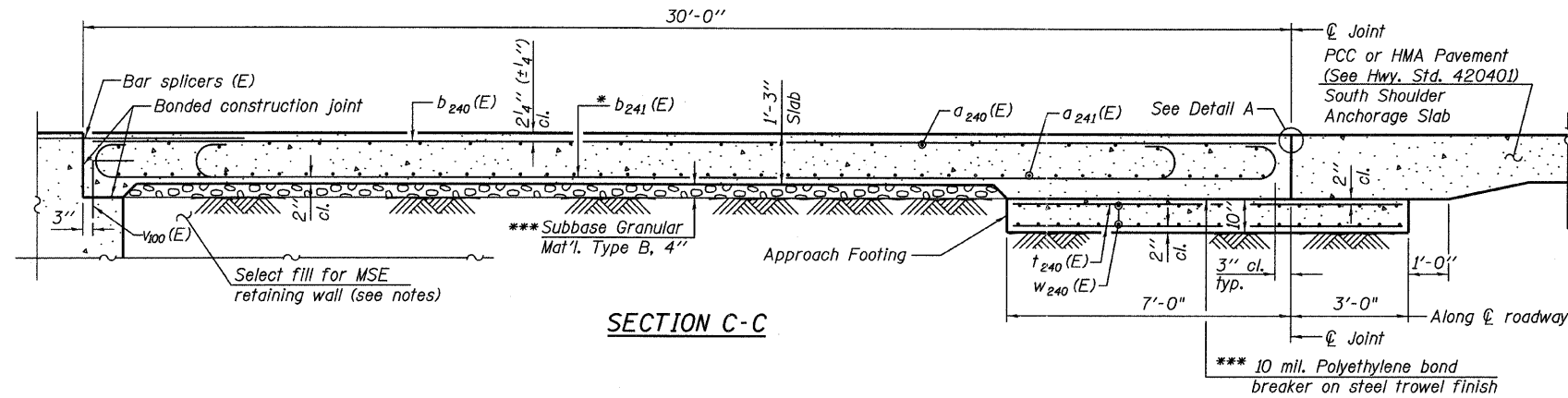


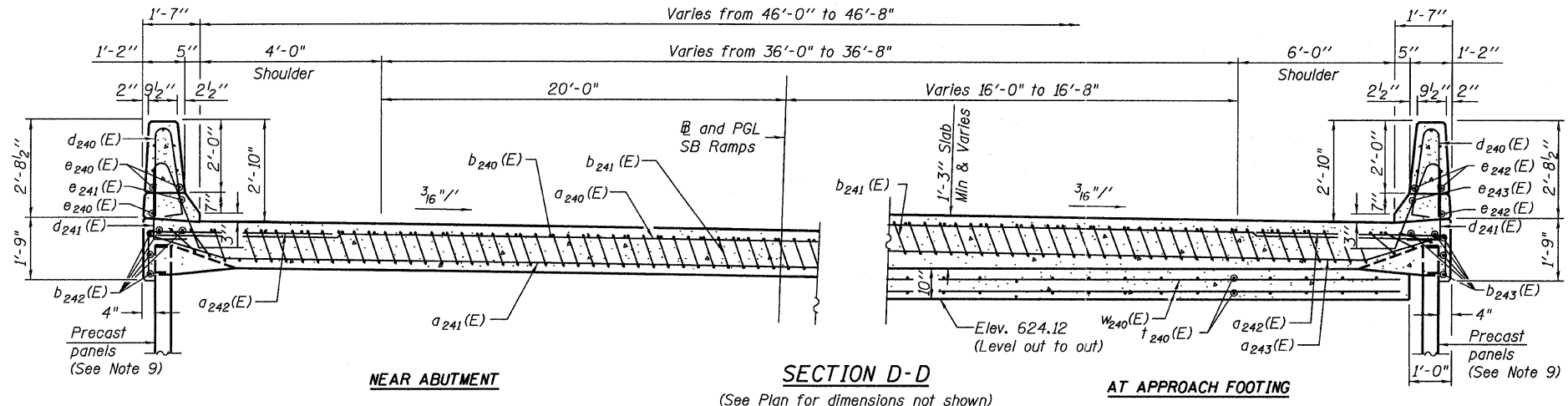
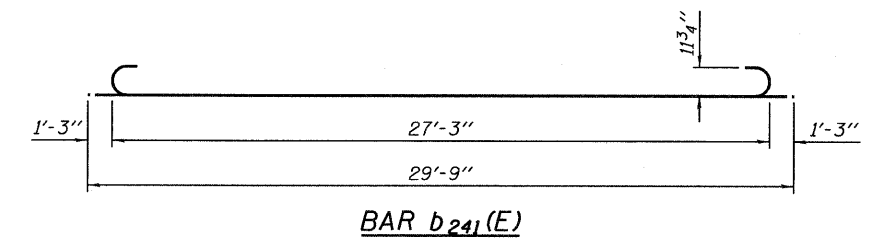
STATE OF ILLINOIS  
DEPARTMENT OF TRANSPORTATION



- Notes:
1. See sheet 72 for Detail A.
  2. Approach slab and parapet concrete shall be paid for as Concrete Superstructure.
  3. Approach footing concrete shall be paid for as Concrete Structures.
  4. Reinforcement shall be paid for as Reinforcement Bars, Epoxy Coated.
  5. For  $v_{100}(E)$  bar details, see sheet 214.
  6. The approach footing maximum applied service bearing pressure ( $Q_{max}$ ) = 2.0 ksf.
  7. For bar splicer details, see sheet 224.
  8. Cost of excavation for approach footing included with Concrete Structures.
  9. For MSE Retaining Wall details (S.N. 016-1305), See sheets 574-583 of 741.

The quantity for Bridge Deck Grooving & Protective Coat for approach slab is included with the quantities on sheet 50.

- \* Tilt #9  $b_{241}(E)$  bars as required to maintain clearance.
- \*\*\* Cost included with Concrete Superstructure.

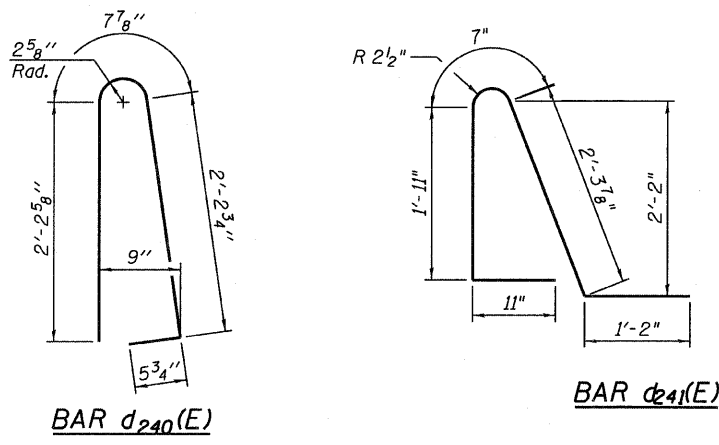
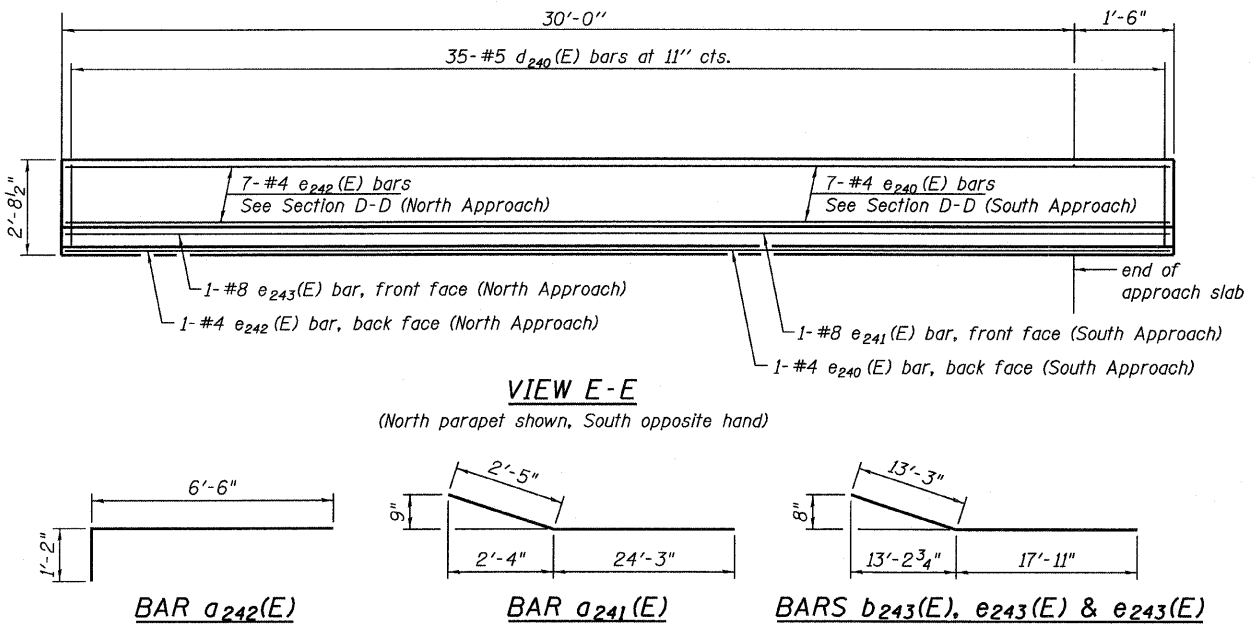


BILL OF MATERIAL

Bar	No.	Size	Length	Shape
$a_{240}(E)$	50	#4	26'-3"	—
$a_{241}(E)$	92	#5	26'-8"	—
$a_{242}(E)$	50	#6	7'-8"	—
$b_{240}(E)$	38	#4	29'-8"	—
$b_{241}(E)$	120	#9	29'-9"	—
$b_{242}(E)$	5	#5	31'-2"	—
$b_{243}(E)$	5	#5	31'-2"	—
$d_{240}(E)$	70	#5	5'-7"	△
$d_{241}(E)$	66	#5	6'-11"	△
$e_{240}(E)$	8	#4	31'-2"	—
$e_{241}(E)$	1	#8	31'-2"	—
$e_{242}(E)$	8	#4	31'-2"	—
$e_{243}(E)$	1	#8	31'-2"	—
$t_{240}(E)$	96	#4	9'-9"	—
$w_{240}(E)$	80	#5	25'-3"	—
Concrete Superstructure		Cu. Yd.	80.3	
Concrete Structures		Cu. Yd.	14.6	
(1.) Reinforcement Bars, Epoxy Coated		Pound	21,400	

(1.) 2,775 pounds billed in Substructure  
Total in Total Bill of Material on sheet 2.

(Sheet 2 of 2)  
RAMP 2 APPROACH SLAB DETAILS  
STRUCTURE NO. 016-0724



TYLIN INTERNATIONAL

DESIGNED - CBS	REVISIONS
CHECKED - AMD, MMB	NAME
DRAWN - CBS	DATE
CHECKED - AMD, MMB	
DATE - 03/25/2011	

SHEET NO. 73	F.A.I. RTE. 55	SECTION 0711.2R & 1011.1BR	COUNTY COOK	TOTAL SHEETS 741	SHEET NO. 397
239 SHEETS	CONTRACT NO. 60999			FED. ROAD DIST. NO. 1 ILLINOIS FED. AID PROJECT	

4/28/2011 11:51:49 AM p:\01345\structure\C2\_Central\_Ave\_016-0724\55-2apor02.dwg