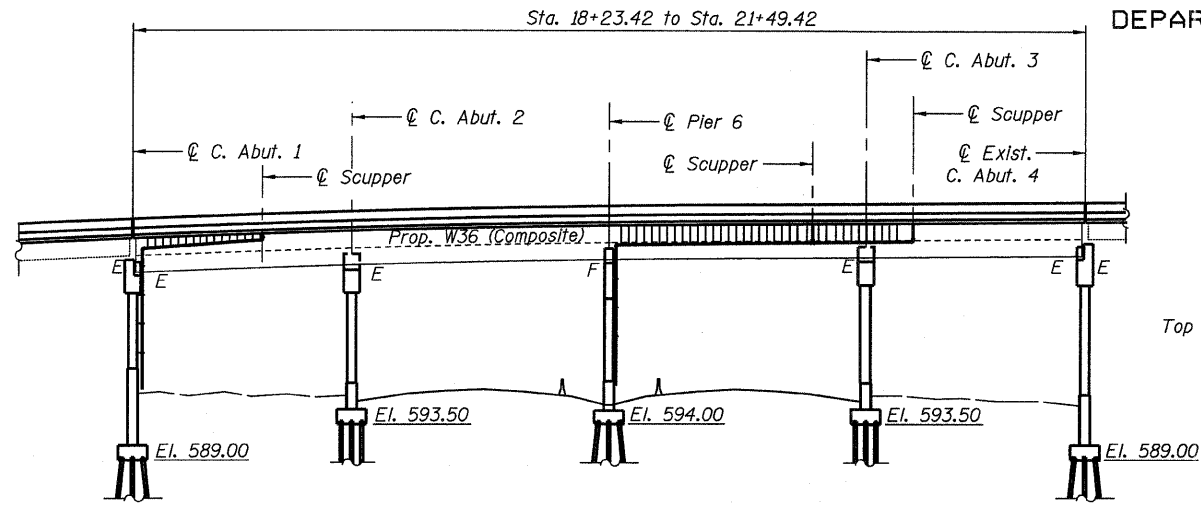
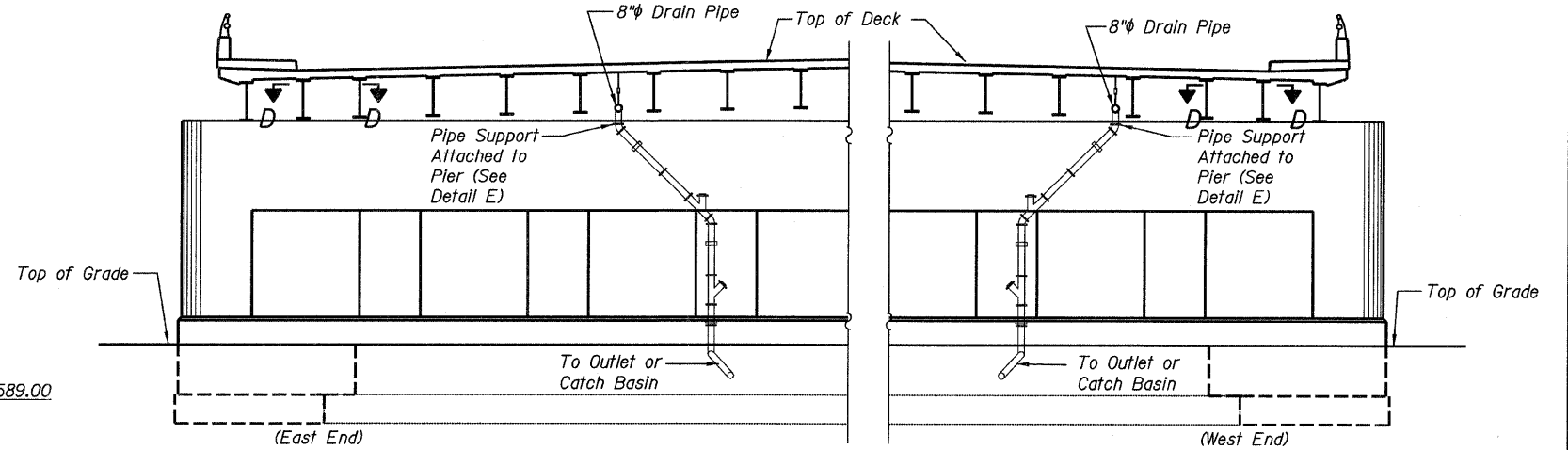


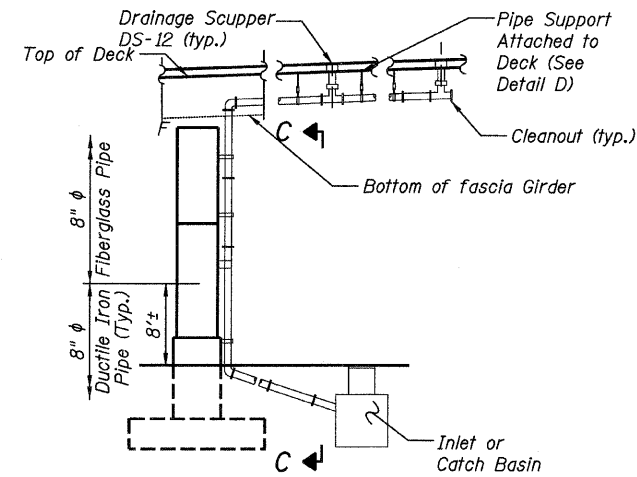
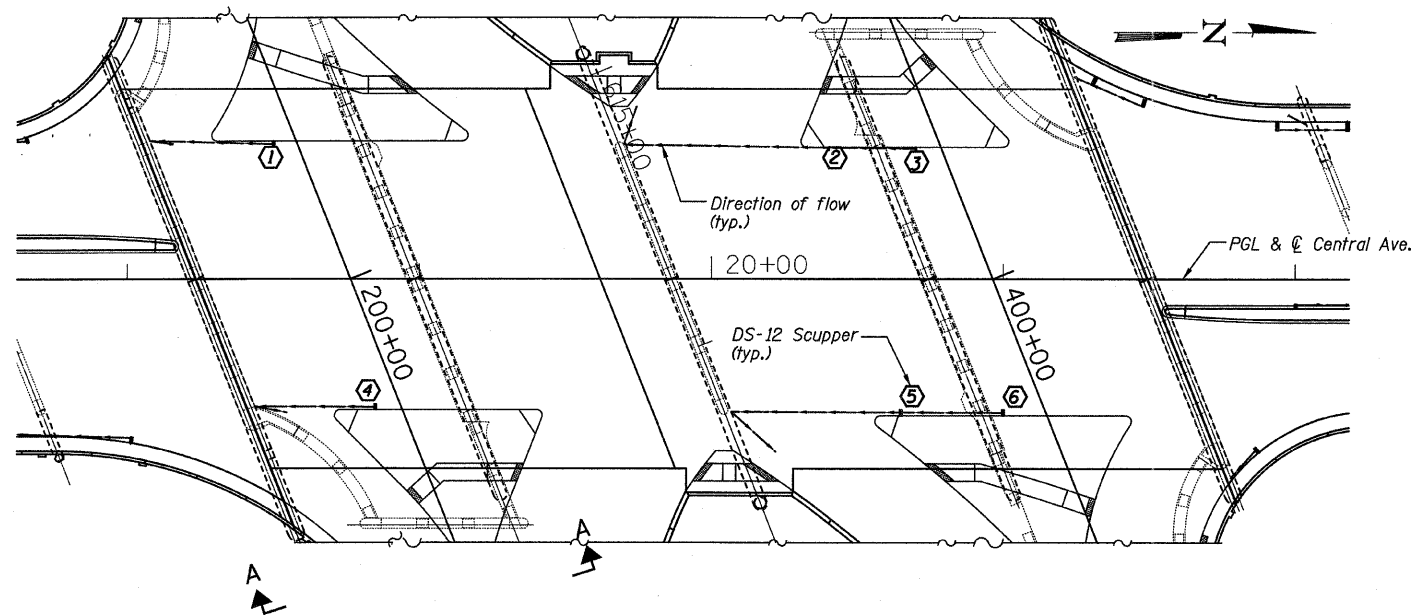
STATE OF ILLINOIS
DEPARTMENT OF TRANSPORTATION



ELEVATION



VIEW C-C
(Typical)



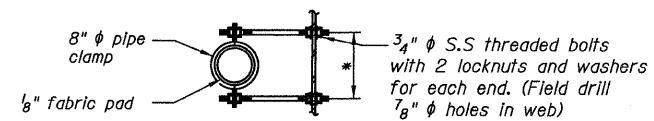
VIEW A-A
(Typical)

SCUPPER LOCATION TABLE

Scupper No.	Type	Station	Offset
1	DS-12	18+50.00	45.93 (L)
2	DS-12	20+40.00	45.93 (L)
3	DS-12	20+70.00	45.93 (L)
4	DS-12	18+85.00	45.93 (R)
5	DS-12	20+65.00	45.93 (R)
6	DS-12	21+00.00	45.93 (R)

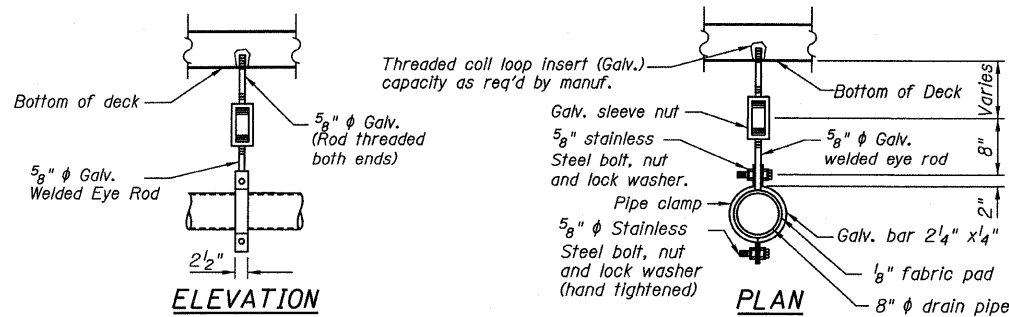
NOTES:

1. Pipes and fittings shall be reinforced fiberglass. See Special Provisions.
2. All pipe supports and hardware shall be hot dipped galvanized. See Special Provisions.
3. See Special Provisions for additional information.
4. Contractor to provide shop drawings for Drainage System.
5. The Pipe Support Detail at C. Abut. 1 shall be such as to provide for a total movement based on thermal expansion of 2 inches.
6. The cost of the removal of the existing drainage system is included with the cost of "Removal of Existing Superstructures".
7. The pay item "Drainage System" includes the Mainline and the Ramps.
8. The cost of the ductile iron pipe, connection to proposed catch basin, trenching and backfilling shall be included in Drainage System.



SECTION D-D

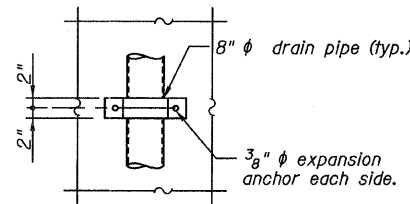
* Dimension as required by pipe clamp



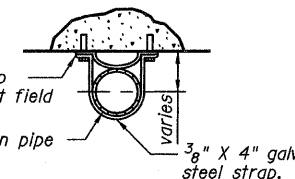
ELEVATION

PLAN

PIPE SUPPORT DETAIL AT BRIDGE DECK - DETAIL D



ELEVATION



PLAN

PIPE SUPPORT DETAIL AT ABUTMENT & PIER - DETAIL E

BILL OF MATERIAL

ITEM	UNIT	TOTAL
Drainage System	L SUM	0.28

DRAINAGE SYSTEM
CENTRAL / I-55
S.N. 016-0724

TYLIN INTERNATIONAL	DESIGNED - JMA	REVISIONS		SHEET NO. 83	F.A.I. RTE.	SECTION	COUNTY	TOTAL SHEETS	SHEET NO.					
	CHECKED - AMD, JMA	NAME	DATE							55	0711.2R & 1011.1BR	COOK	741	407
	DRAWN - JMA									239 SHEETS	CONTRACT NO. 60999			
	CHECKED - AMD,									FED. ROAD DIST. NO. 1 ILLINOIS FED. AID PROJECT				
	DATE - 03/25/2011													