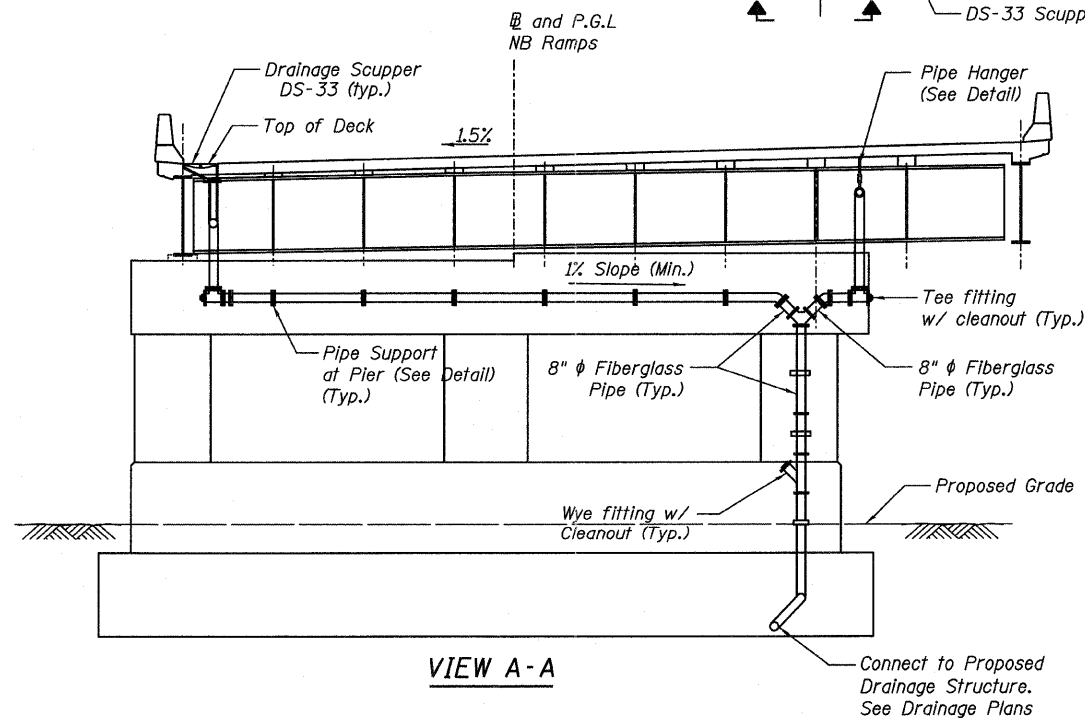
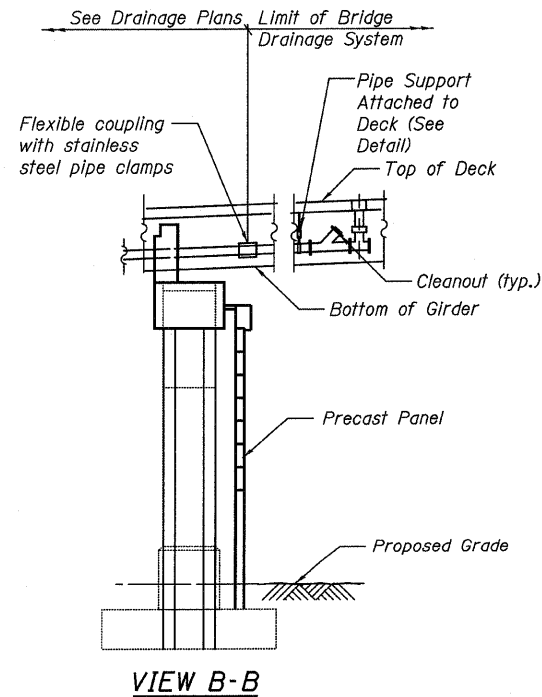
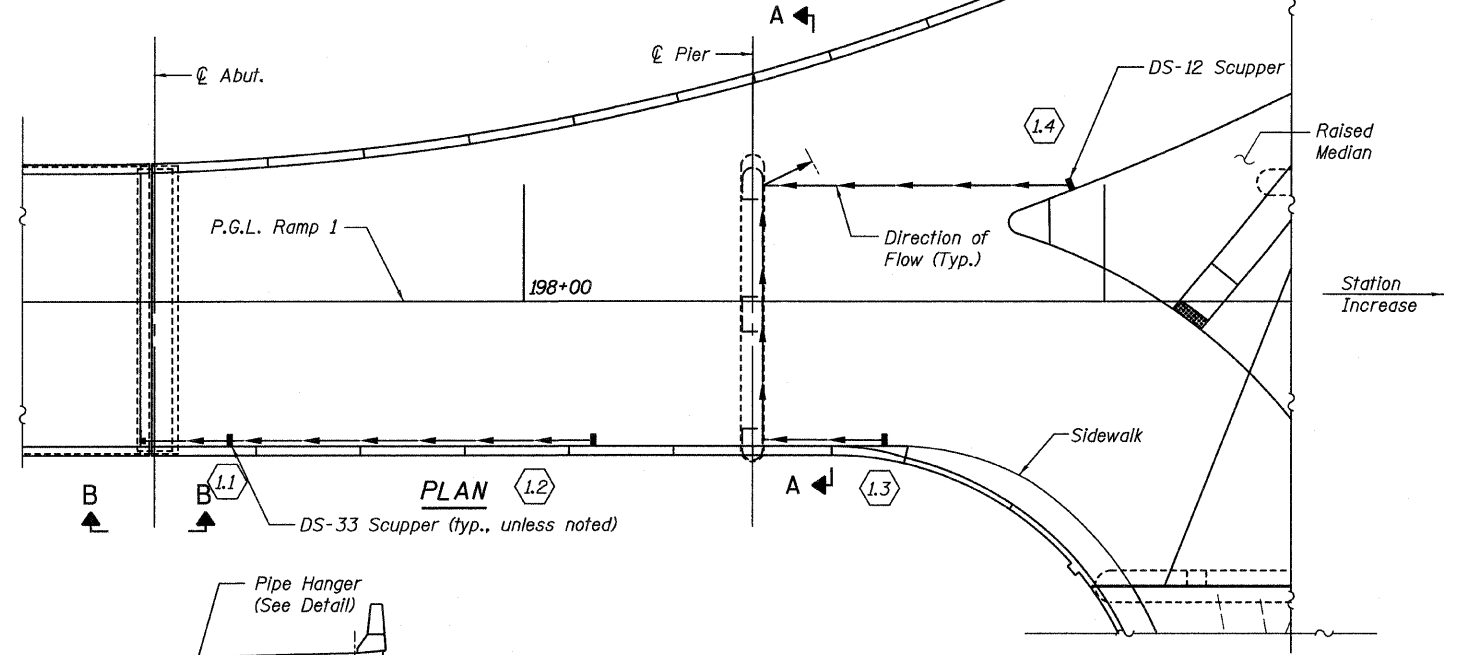
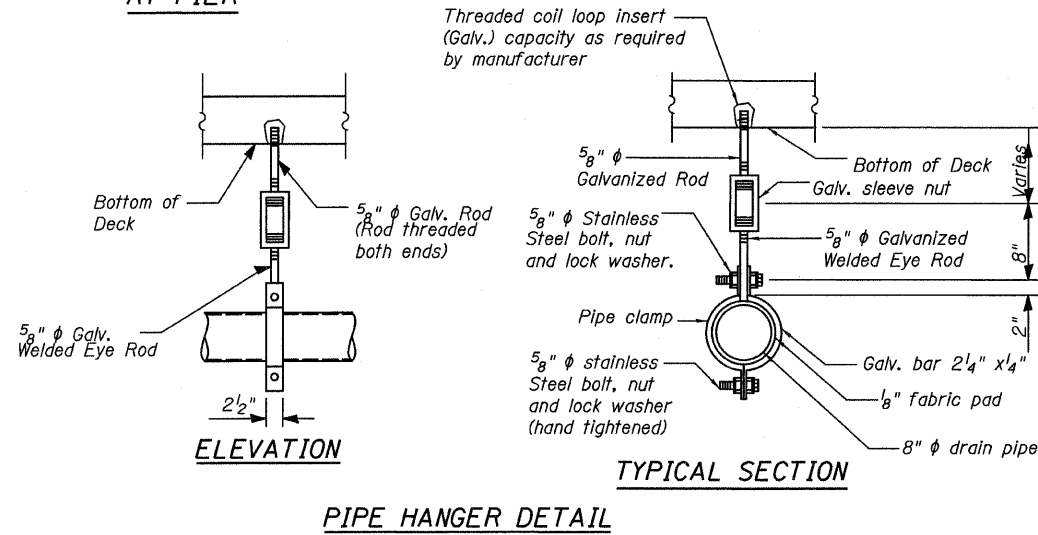
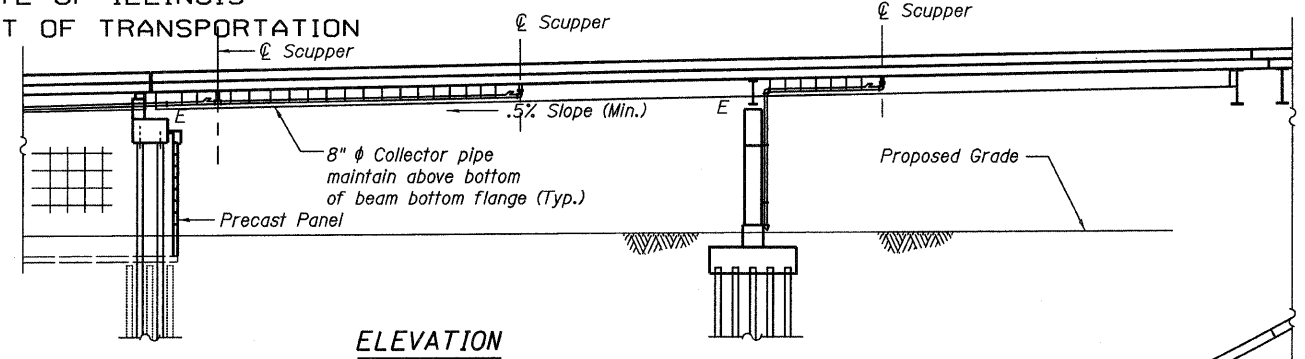
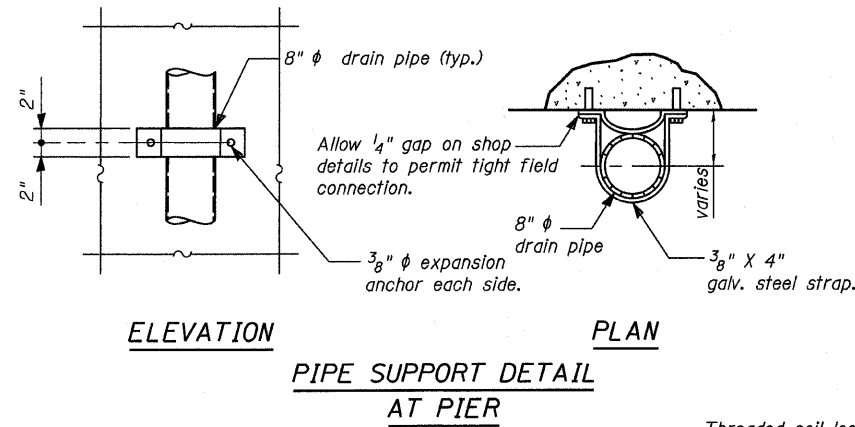


STATE OF ILLINOIS  
DEPARTMENT OF TRANSPORTATION

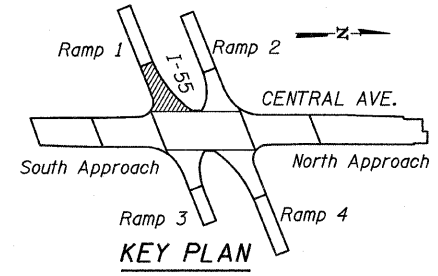


**SCUPPER LOCATION TABLE \***

Scupper No.	Type	Station	Offset
1.1	DS-33	197+49.00	25.00 (R)
1.2	DS-33	198+12.00	25.00 (R)
1.3	DS-33	198+62.00	25.00 (R)
1.4	DS-12	198+94.00	19.16 (L)

\*Stations & offsets measured from NB Ramps Baseline to centerline of scupper or face of barrier or curb

- NOTES:**
- Bridge Drainage System limits to coupling at Abut. and catch basin or inlet at pier.
  - See sheet 83 for additional notes.



**DRAINAGE SYSTEM  
RAMP 1  
S.N. 016-0724**

<b>TYLIN INTERNATIONAL</b>	DESIGNED - JMA	REVISIONS		SHEET NO. 84	F.A.I. RTE. 55	SECTION 0711.2R & 1011.1BR	COUNTY COOK	TOTAL SHEETS 741	SHEET NO. 408
	CHECKED - AMD,	NAME	DATE						
	DRAWN - JMA								
	CHECKED - AMD,								
	DATE - 03/25/2011								
				239 SHEETS	CONTRACT NO. 60999		FED. ROAD DIST. NO. 1 ILLINOIS FED. AID PROJECT		

p:\01345\structure\c2 Central Ave. 016-0724\155-1drain.dgn 12/02/11 12:44 PM