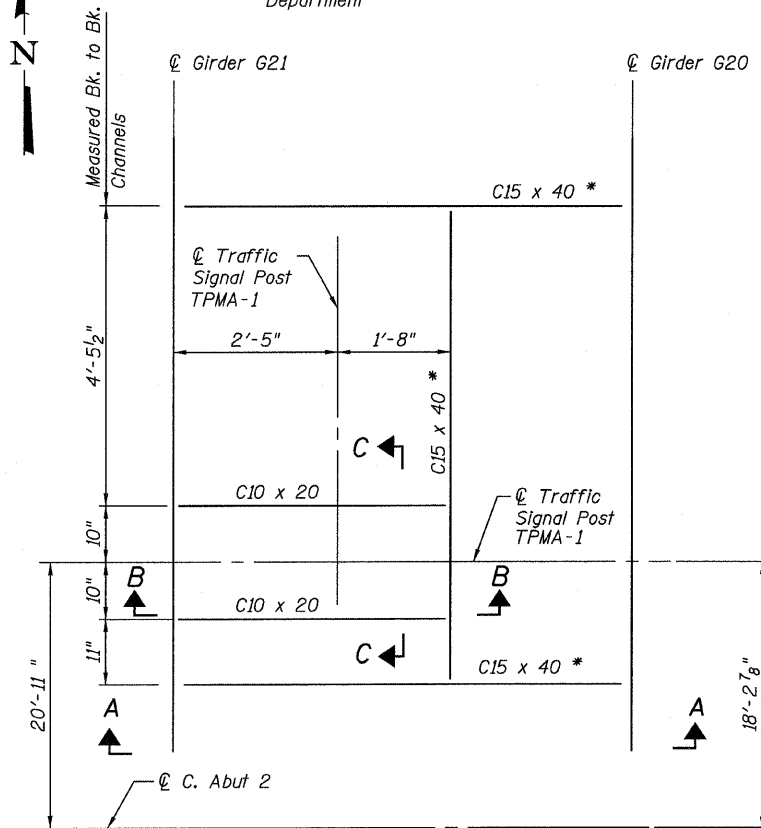
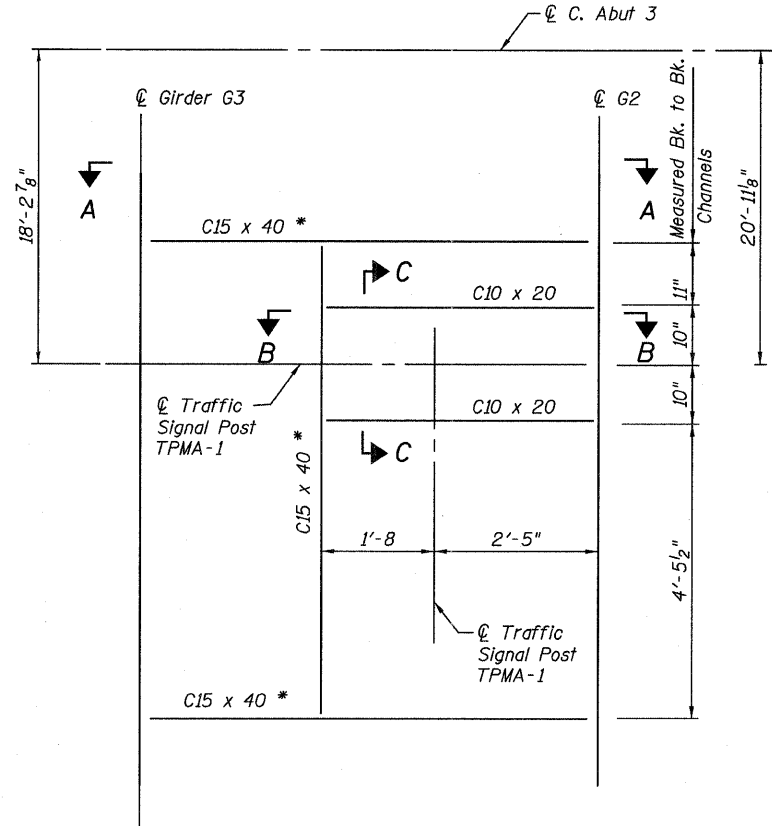


STATE OF ILLINOIS
DEPARTMENT OF TRANSPORTATION

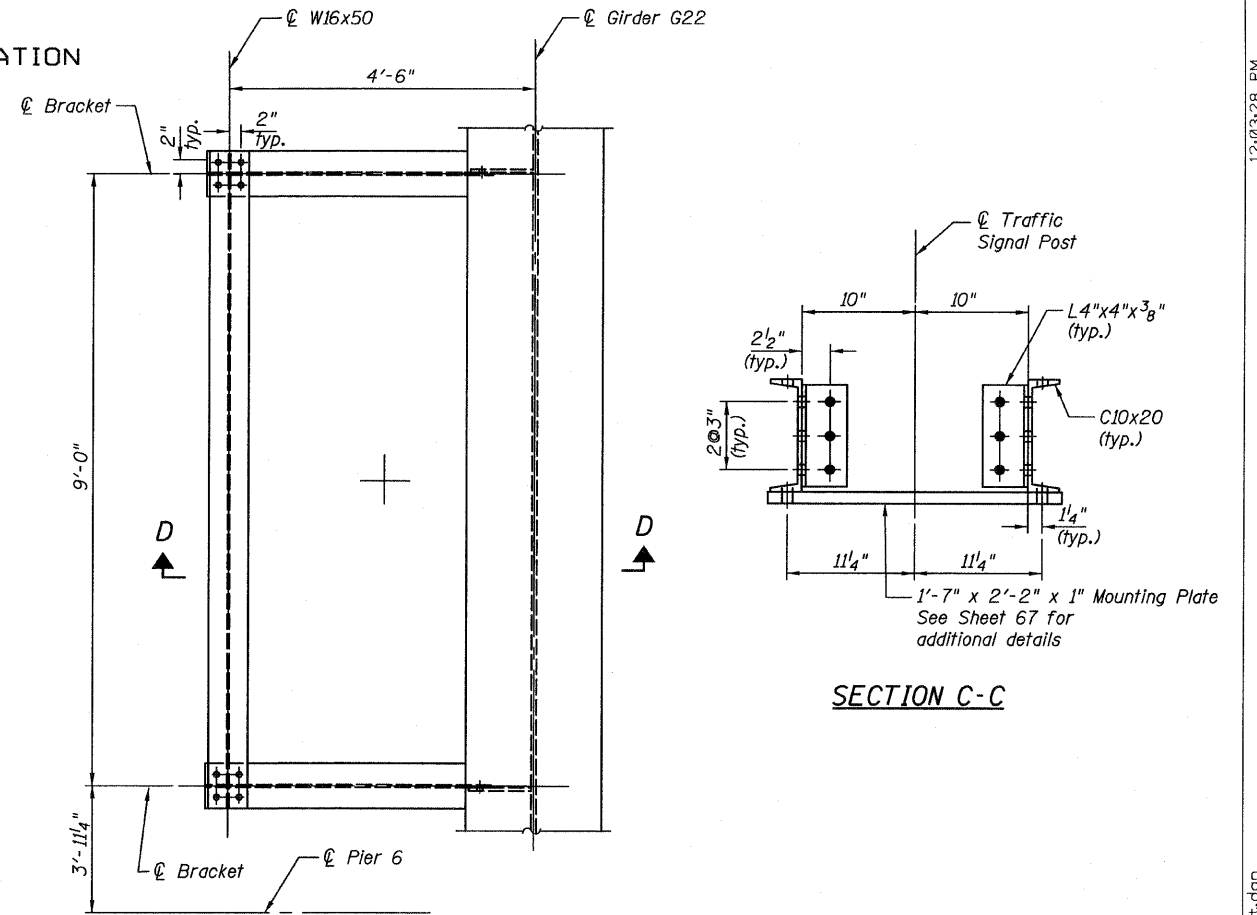
* Alternate channel C15x50, permitted to facilitate material acquisition. Calculated weight of structural steel is based on the lighter section. The alternate, if used, shall be provided at no additional cost to the Department



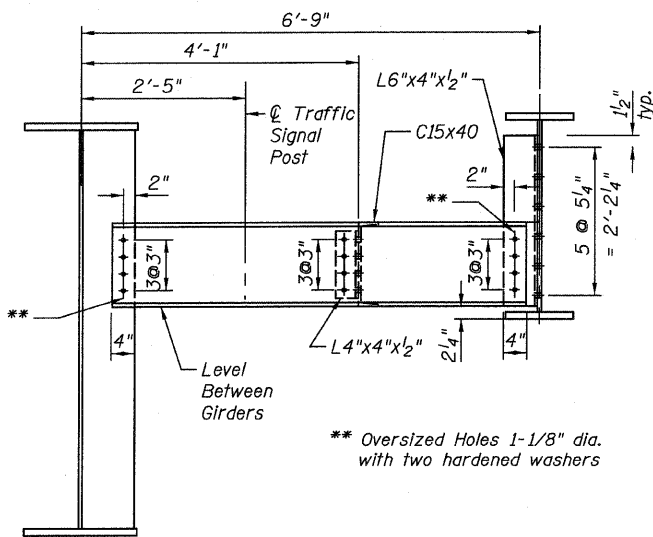
RAMP 1 ISLAND TPMA-1
Framing Plan



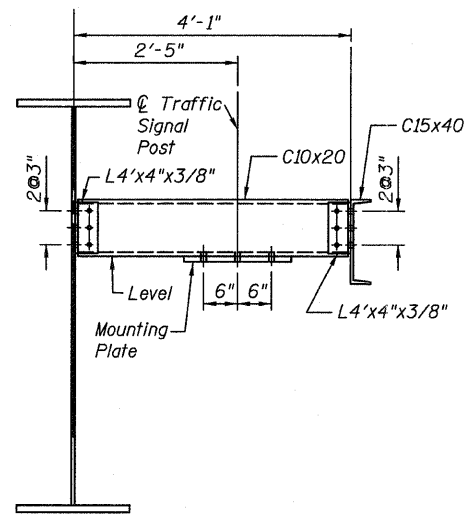
RAMP 4 ISLAND TPMA-1
Framing Plan



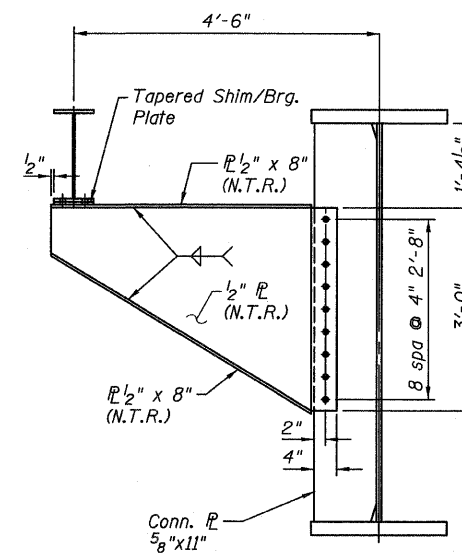
TRAFFIC SIGNAL CABINET
CANTILEVER BRACKET
Framing Plan



SECTION A-A



SECTION B-B



SECTION D-D

NOTES:

1. All bolts to be 7/8" dia. AASHTO M164, Type 1, in standard size holes unless noted otherwise.
2. Work this Sheet with Framing Plan and Girder Elevation Sheets

DIAPHRAGM & FRAMING DETAILS
CENTRAL/I-55
STRUCTURE NO.016-0724

TYLIN INTERNATIONAL

DESIGNED - JN	REVISIONS	
CHECKED - AMD,	NAME	DATE
DRAWN - JN		
CHECKED - AMD,		
DATE - 03/25/2011		

SHEET NO.109	F.A.I RTE.	SECTION	COUNTY	TOTAL SHEETS	SHEET NO.
	55	0711.2R & 1011.1BR	COOK	741	433
239 SHEETS		CONTRACT NO. 60999			
FED. ROAD DIST. NO. 1 ILLINOIS FED. AID PROJECT					