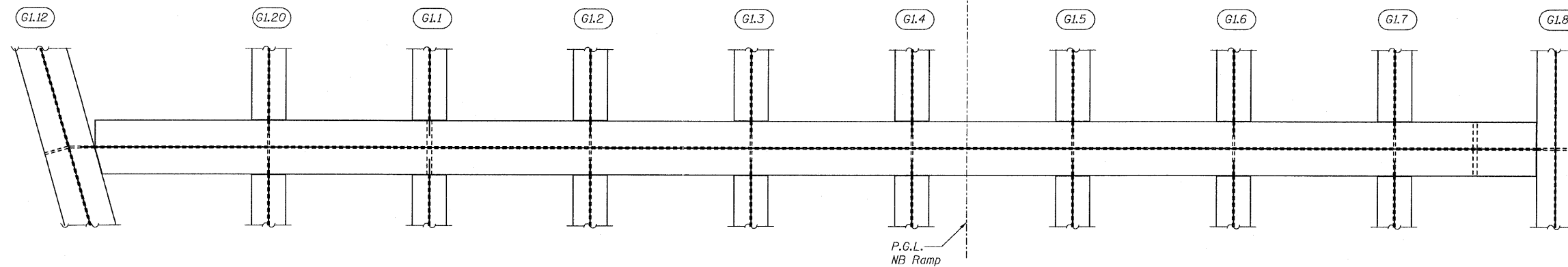
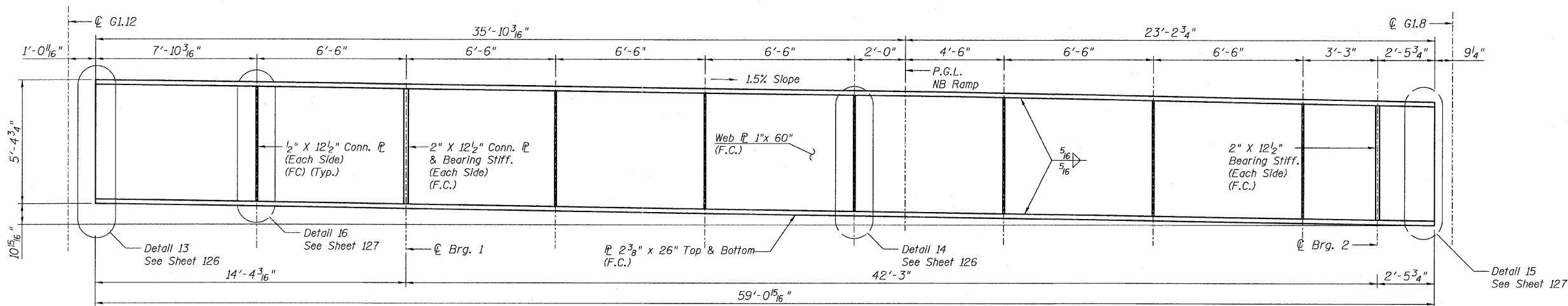


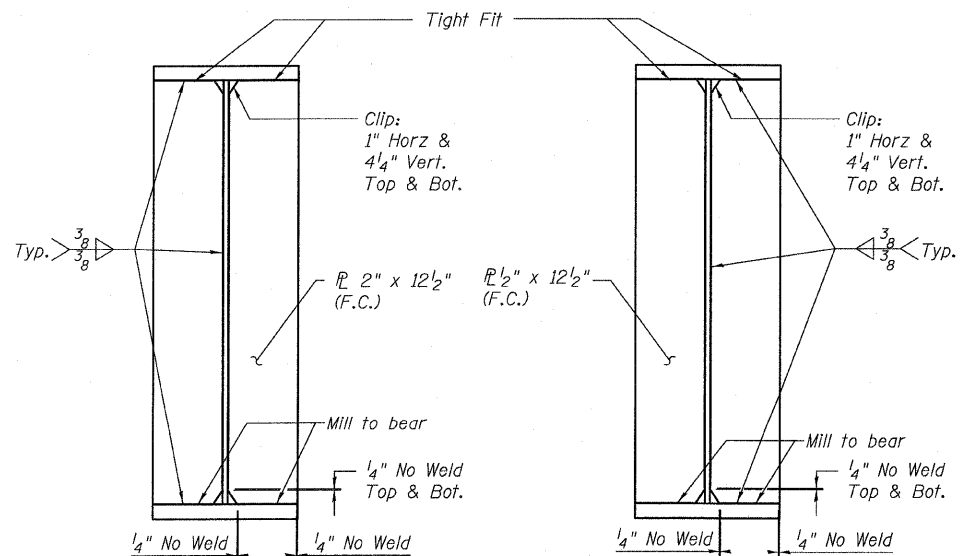
STATE OF ILLINOIS  
DEPARTMENT OF TRANSPORTATION



**CROSSHEAD PLAN - AT RI PIER**  
(Top Connection Plates Not Shown for Clarity)



**CROSSHEAD ELEVATION - AT RI PIER (F.C.M.)**  
(Looking East)



**Bearing Stiffener Details**

**Conn. P Details**

**TOP OF WEB ELEVATIONS**  
(For Fabrication Only)

LOCATION	ELEVATION
℄ Brg. 1	624.28
℄ Brg. 2	623.65

**NOTES:**

- All steel shown on this sheet shall conform to the requirements of AASHTO M270 GR 50.
- Load carrying components designated "NTR" shall conform to the supplemental requirements for Notch Toughness, Zone 2.
- F.C.M. denotes Fracture Critical Member.
- F.C. denotes Fracture Critical Material, AASHTO Zone II.
- Crosshead shall not be cambered.

**CROSSHEAD GIRDER DETAILS**  
**RAMP 1 FLARE**  
**STRUCTURE NO. 016-0724**

**TYLIN INTERNATIONAL**

DESIGNED	EKH, JMA, PK	REVISIONS	
CHECKED	AMD,	NAME	DATE
DRAWN	EKH, JMA, PK		
CHECKED	AMD,		
DATE	03/25/2011		

SHEET NO. 118 239 SHEETS	F.A.I RTE.	SECTION	COUNTY	TOTAL SHEETS	SHEET NO.
	55	0711.2R & 1011.1BR	COOK	741	442
			CONTRACT NO. 60999		
FED. ROAD DIST. NO. 1			ILLINOIS	FED. AID PROJECT	

4/28/2011

pi:\01345\structure\C2 Central Ave. 016-0724\1551\Framed19.dgn

12:52:48 PM