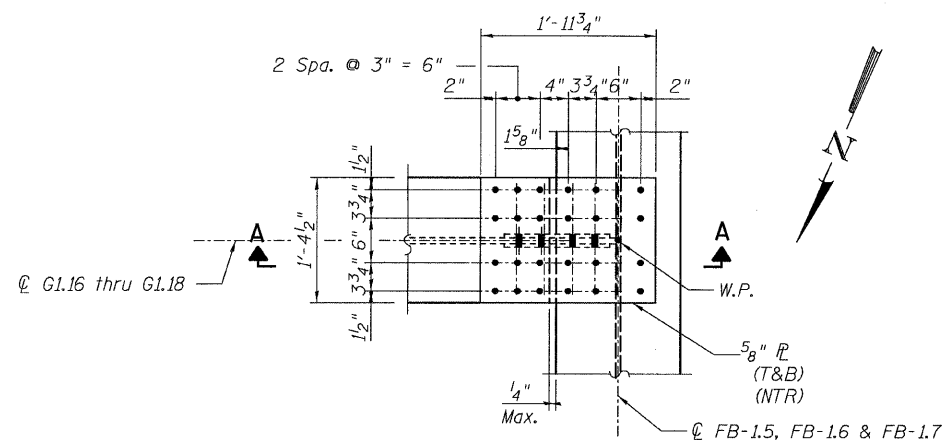
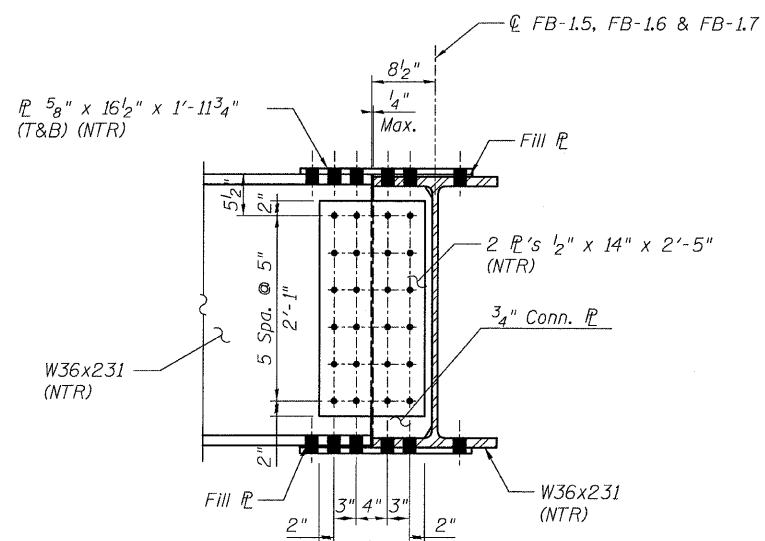


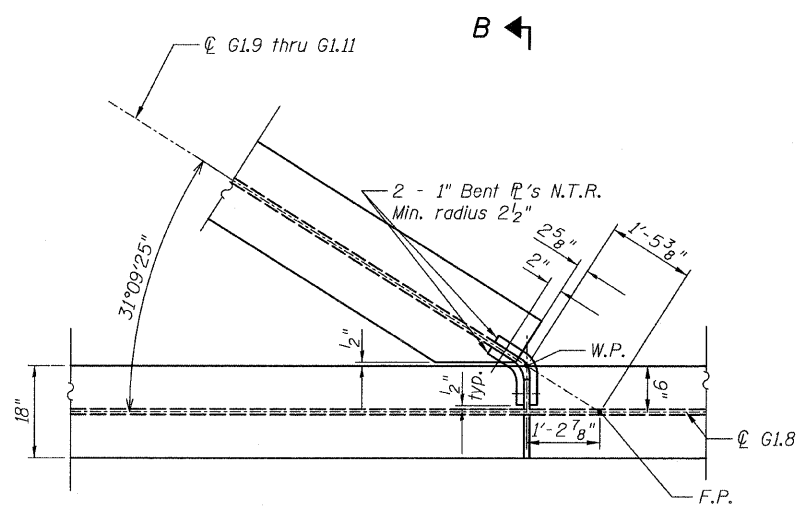
STATE OF ILLINOIS  
DEPARTMENT OF TRANSPORTATION



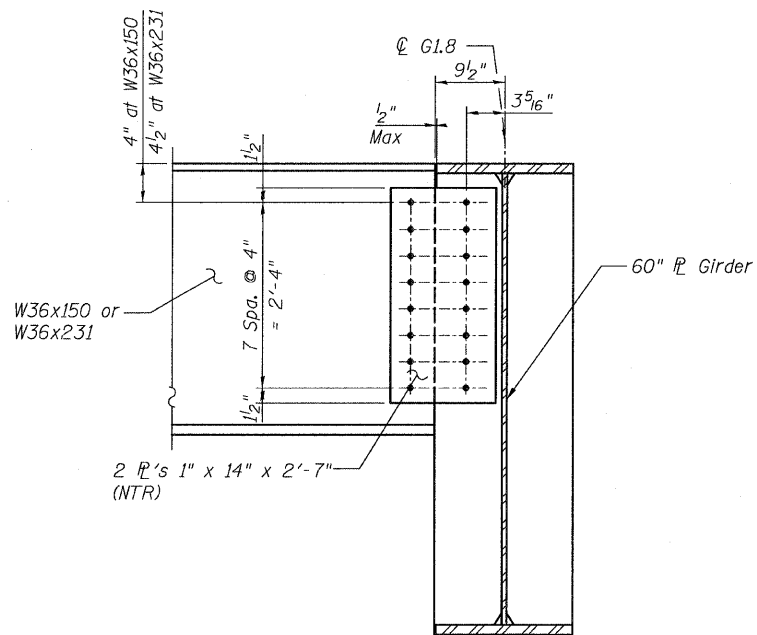
**DETAIL 11**  
(Top Flange)  
(Bottom flange is similar.)



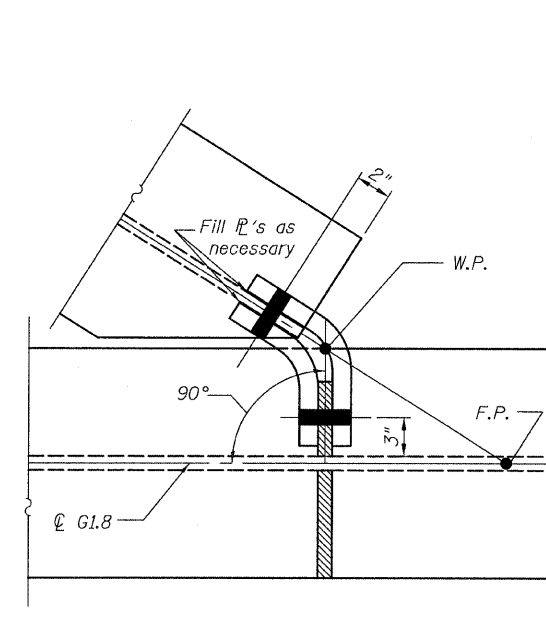
**SECTION A-A**



**DETAIL 12**



**SECTION B-B**



**PLAN-FRAMED CONNECTION**

**NOTES:**

1. All steel shall be AASHTO M270 Grade 50.
2. For Details 11 and 12 locations, see Sheet 94.
3. F.C. - denotes Fracture Critical Material, AASHTO Zone II.
4. Load carrying components designated "NTR" shall conform to the Supplemental Requirements for Notch Toughness, Zone 2.

**CONNECTION DETAILS 11&12  
RAMP 1 FLARE  
STRUCTURE NO. 106-0724**

<b>TYLIN INTERNATIONAL</b>	DESIGNED - EKH, JMA	REVISIONS	
	CHECKED - AMD,	NAME	DATE
	DRAWN - EKH, JMA		
	CHECKED - AMD,		
	DATE - 03/25/2011		

SHEET NO. 125	F.A.I. RTE.	SECTION	COUNTY	TOTAL SHEETS	SHEET NO.
	55	0711.2R & 1011.1BR	COOK	741	449
239 SHEETS	CONTRACT NO. 60999				
FED. ROAD DIST. NO. 1 ILLINOIS FED. AID PROJECT					

pi:\01345\structur\02\_Central\_Ave\_016-0724\155\Framed116.dwg 5/9/2011 9:09:05 AM