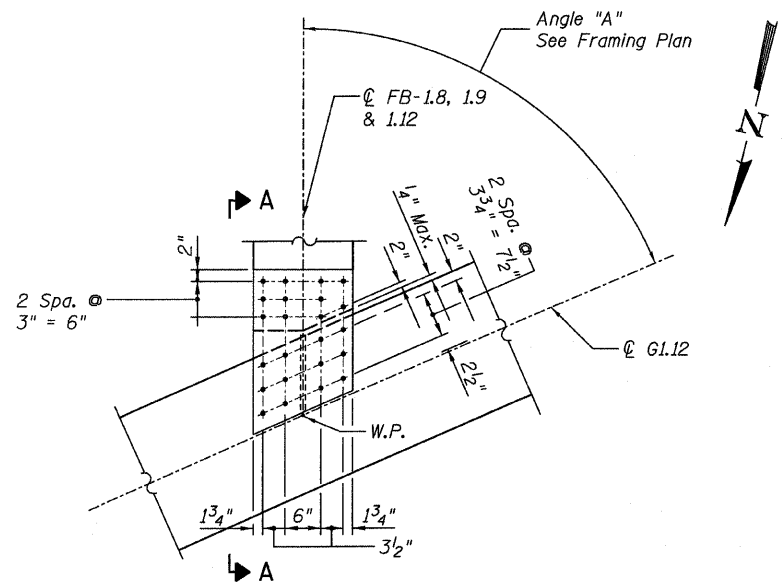
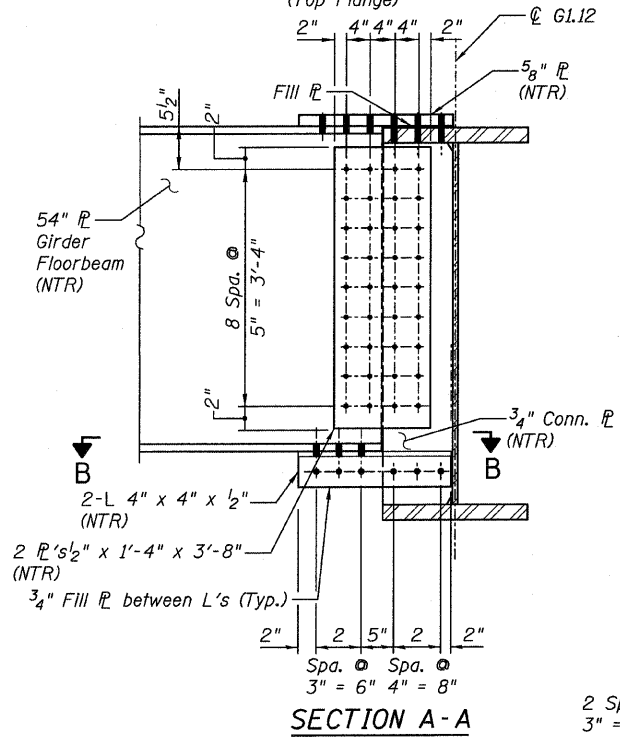


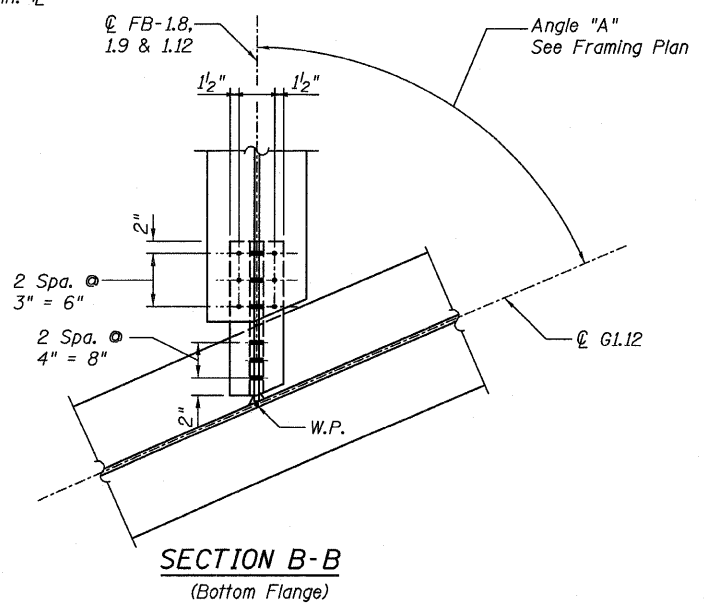
STATE OF ILLINOIS
DEPARTMENT OF TRANSPORTATION



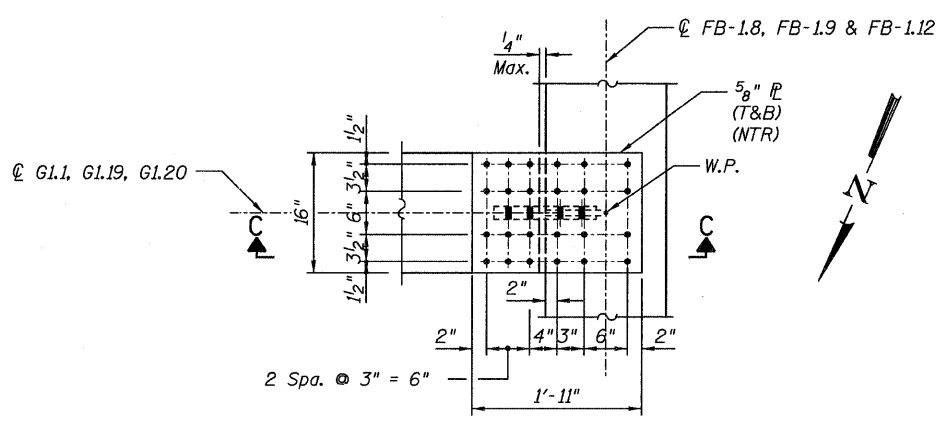
DETAIL 17
(Top Flange)



SECTION A-A

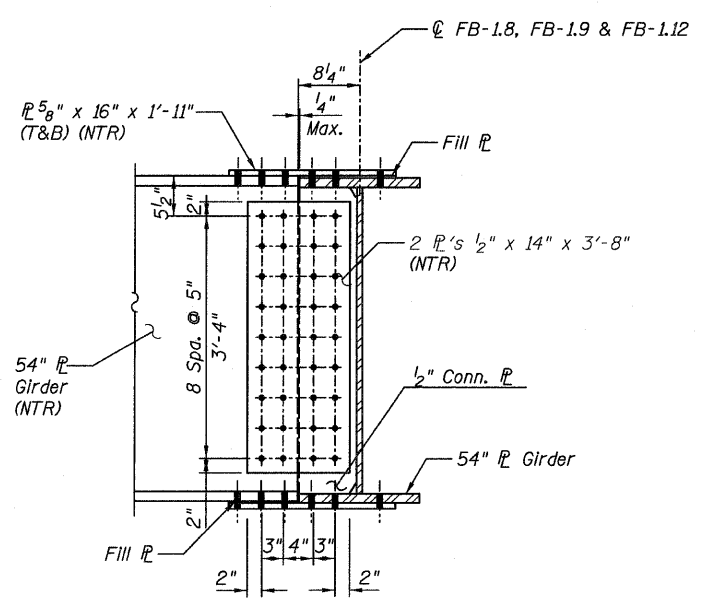


SECTION B-B
(Bottom Flange)

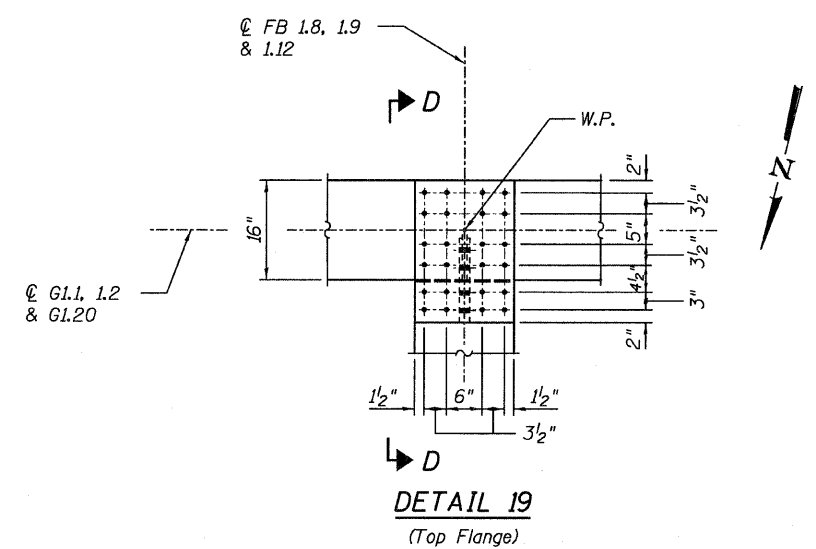


DETAIL 18
(Top Flange)

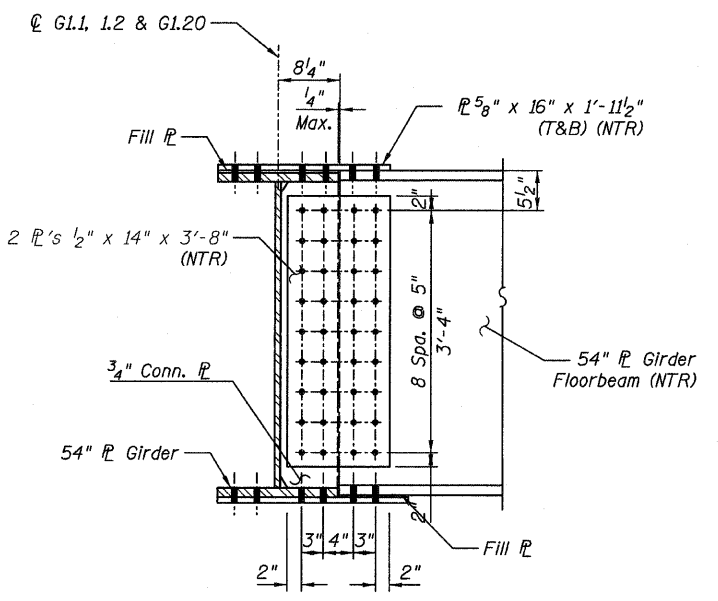
(Bottom flange is similar.)



SECTION C-C



DETAIL 19
(Top Flange)



SECTION D-D

NOTES:

1. All steel shall be AASHTO M270 Grade 50.
2. For Details 17, 18 & 19 locations, see Sheet 94.
3. Load carrying components designated "NTR" shall conform to the Supplemental Requirements for Notch Toughness, Zone 2.

CONNECTION DETAILS 17, 18 & 19
RAMP 1 FLARE
STRUCTURE NO. 016-0724

TYLIN INTERNATIONAL

DESIGNED - EKH, JMA	REVISIONS	
CHECKED - AMD,	NAME	DATE
DRAWN - EKH, JMA		
CHECKED - AMD,		
DATE - 03/25/2011		

SHEET NO. 128 239 SHEETS	F.A.I. RTE.	SECTION	COUNTY	TOTAL SHEETS	SHEET NO.
	55	0711.2R & 1011.1BR	COOK	741	452
			CONTRACT NO. 60999		
FED. ROAD DIST. NO. 1			ILLINOIS	FED. AID PROJECT	

12:53:03 PM
 p:\01345\structure\2 Central Ave. 016-0724\1551\Framed118a.dwg
 4/28/2011