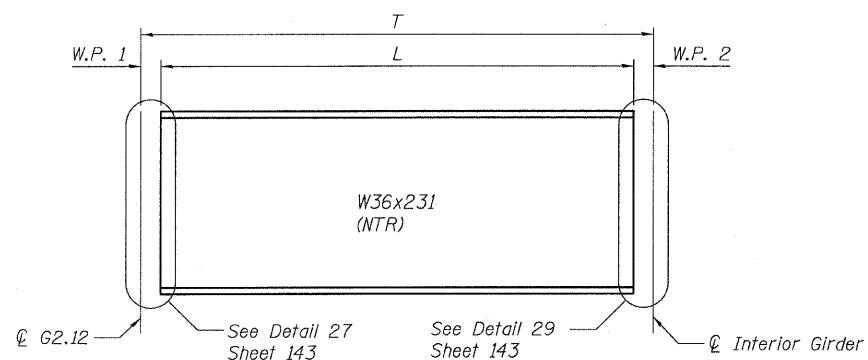
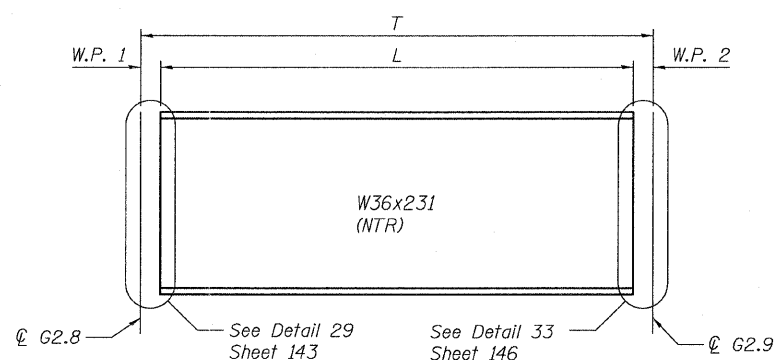


STATE OF ILLINOIS
DEPARTMENT OF TRANSPORTATION



FLOOR BEAM ELEVATION

(FB-2.1 & FB-2.3)
(Looking West)

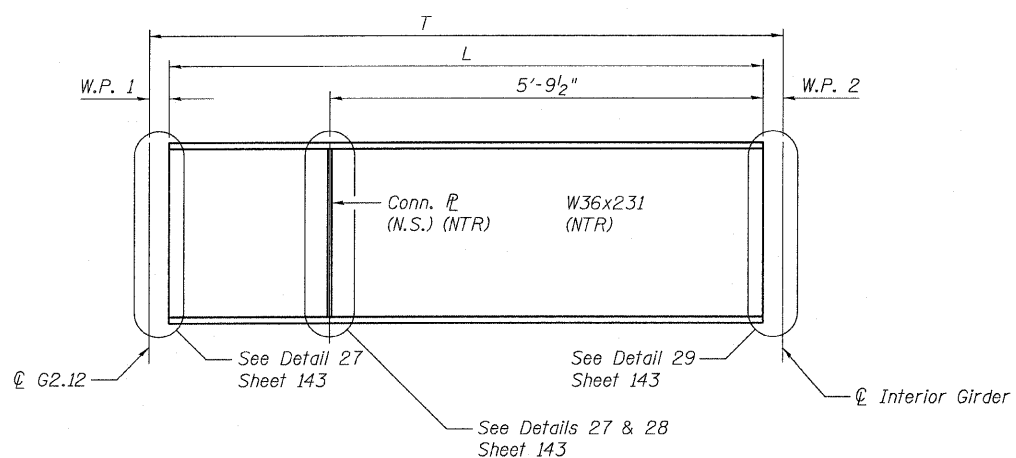


F.B. 2.7 ELEVATION

(Looking West)

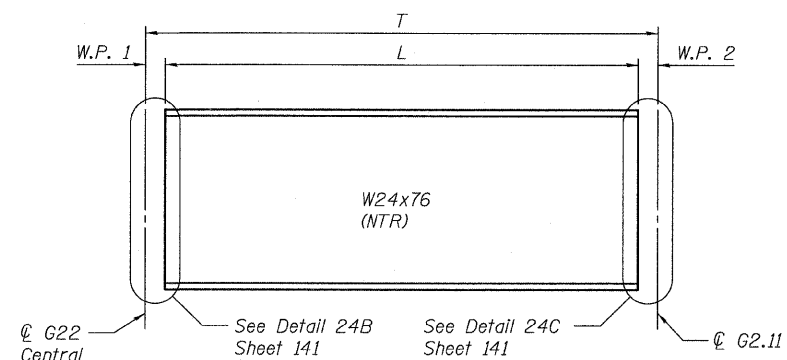
Floor Beam	W.P. 1	W.P. 2	L	T
FB-2.2	11' 1/6"	8' 1/2"	7'-7 1/6"	9'-3 3/8"
FB-2.4	11' 5/8"	8' 1/2"	7'-10 5/8"	9'-7 3/8"
FB-2.5	1'-0 13/16"	8' 1/2"	7'-7 3/8"	9'-5"
FB-2.6	1'-1 1/2"	8' 1/2"	7'-6 1/2"	9'-4 1/2"

Floor Beam	W.P. 1	W.P. 2	L	T
FB-2.1	11' 5/8"	8' 1/2"	5'-6 1/4"	7'-2 1/6"
FB-2.3	11' 5/8"	8' 1/2"	3'-11 13/16"	5'-7 5/8"
FB-2.7	8' 1/2"	9' 1/4"	5'-0 1/4"	6'-6"
FB-2.8	1'-1 3/16"	2"	11'-2 13/16"	12'-6"



FLOOR BEAM ELEVATION

(FB-2.2, FB-2.4 thru FB-2.6)
(Looking West)



F.B. 2.8 ELEVATION

(Looking South)

NOTES:

- All steel shown on this sheet shall conform to the requirements of AASHTO M270 GR 50.
- Load carrying components designated "NTR" shall conform to the supplemental requirements for Notch Toughness, Zone 2.
- N.S. denotes near side
- For Connection Plate Detail see Sheet 133.

**FLOOR BEAM DETAILS
RAMP 2 FLARE
STRUCTURE NO. 016-0724**

TYLIN INTERNATIONAL	DESIGNED - MI	REVISIONS		SHEET NO. 138	F.A.I RTE. 55	SECTION 0711.2R & 1011.1BR	COUNTY COOK	TOTAL SHEETS 741	SHEET NO. 462			
	CHECKED - AMD, TD, MAI	NAME	DATE							CONTRACT NO. 60999		
	DRAWN - DJR, SB, RLB											
	CHECKED - AMD, TD, MAI											
DATE - 03/25/2011				FED. ROAD DIST. NO. 1 ILLINOIS FED. AID PROJECT								

4/28/2011 12:53:14 PM p:\01345\structure\02 Central Ave. 016-0724\155121.rvt