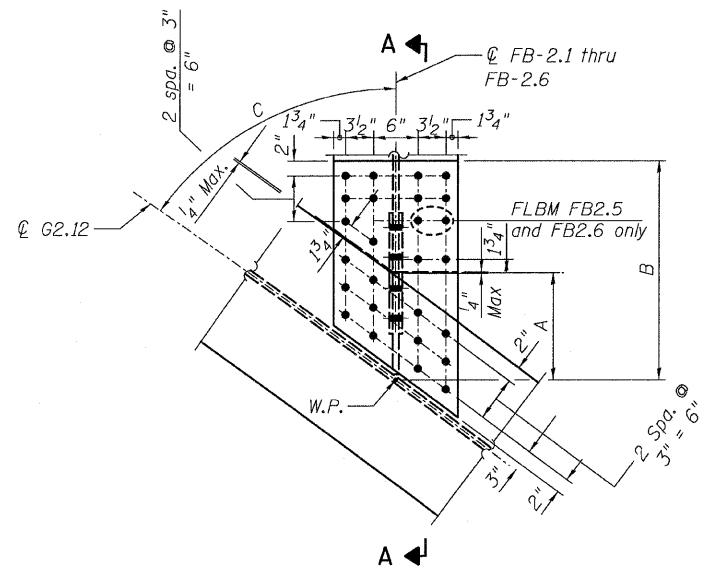
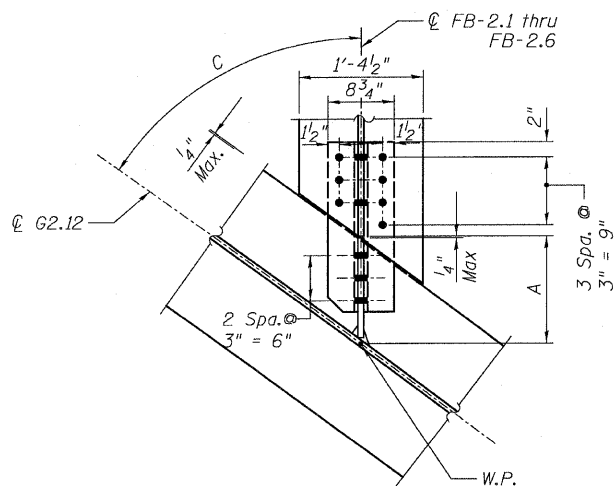


STATE OF ILLINOIS  
DEPARTMENT OF TRANSPORTATION

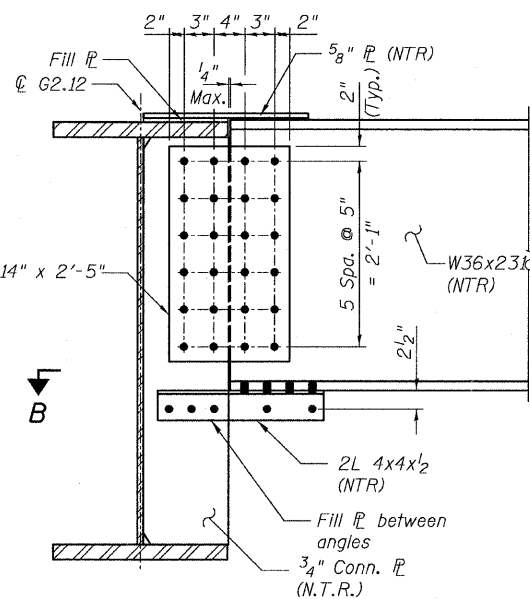


**DETAIL 27**  
(Top Flange)

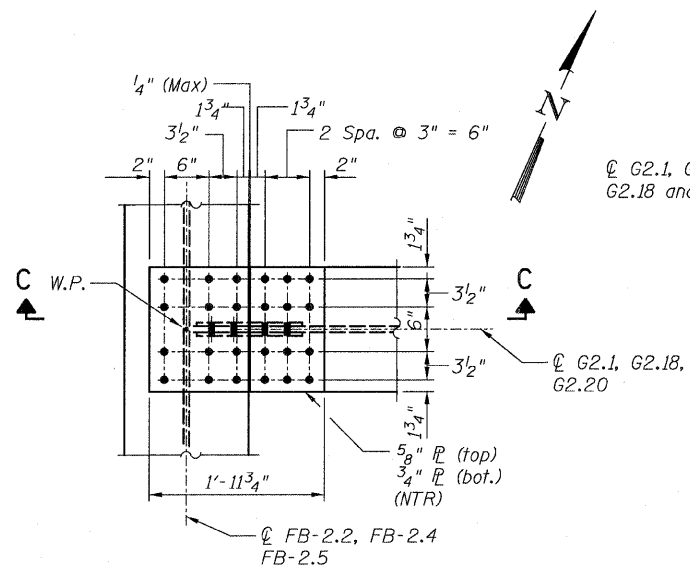
Floor Beam	Dimensions		
	A	B	C
FB-2.1	11 <sup>5</sup> / <sub>16</sub> "	1'-9 <sup>5</sup> / <sub>8</sub> "	84°48'39"
FB-2.2	11 <sup>1</sup> / <sub>16</sub> "	1'-10 <sup>3</sup> / <sub>8</sub> "	79°41'15"
FB-2.3	11 <sup>5</sup> / <sub>8</sub> "	1'-11 <sup>1</sup> / <sub>8</sub> "	75°19'37"
FB-2.4	11 <sup>1</sup> / <sub>16</sub> "	2'-0"	70°52'39"
FB-2.5	1'-0 <sup>15</sup> / <sub>16</sub> "	2'-2 <sup>5</sup> / <sub>8</sub> "	60°38'59"
FB-2.6	1'-1 <sup>1</sup> / <sub>2</sub> "	2'-3 <sup>3</sup> / <sub>8</sub> "	56°35'24"



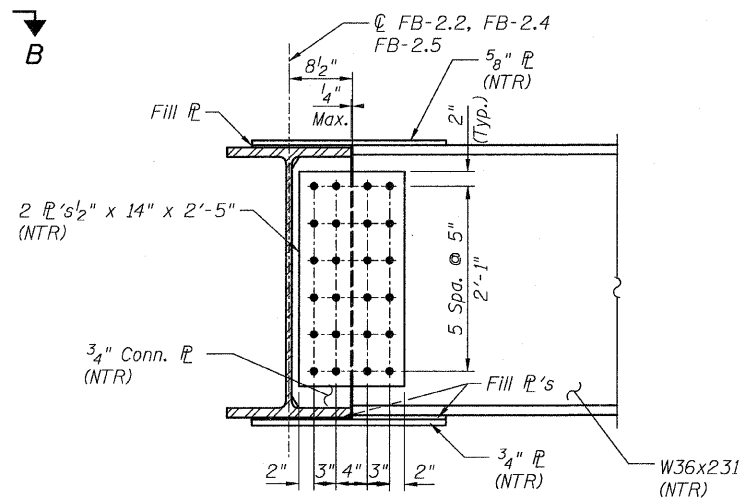
**SECTION B-B**  
(Bottom Flange)



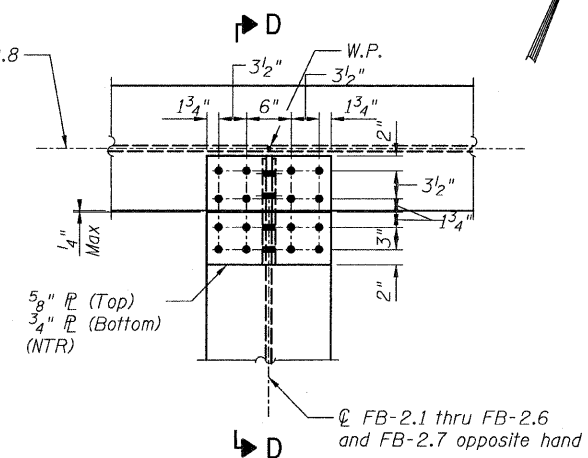
**SECTION A-A**



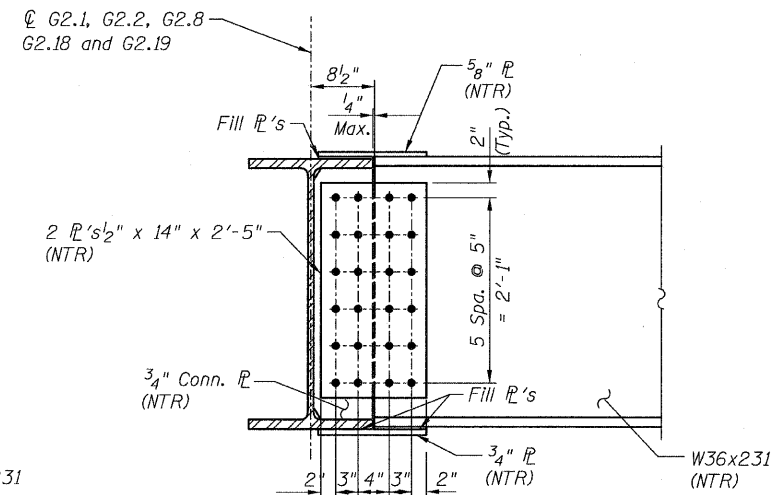
**DETAIL 28**  
(Top Flange)  
(Bottom Flange Similar)



**SECTION C-C**



**DETAIL 29**  
(Top Flange)  
(Bottom Flange Similar)



**SECTION D-D**

**NOTES:**

- All steel shall be AASHTO M 270 Grade 50.
- Load carrying components designated "N.T.R." shall conform to the supplemental requirements for Notch Toughness, Zone 2.

**CONNECTION DETAILS 27, 28 & 29**  
**RAMP 2 FLARE**  
**STRUCTURE NO. 016-0724**

**TYLIN INTERNATIONAL**

DESIGNED - JPN	REVISIONS	
	NAME	DATE
CHECKED - AMD,		
DRAWN - JMA		
CHECKED - AMD,		
DATE - 03/25/2011		

SHEET NO. 143	F.A.I. RTE.	SECTION	COUNTY	TOTAL SHEETS	SHEET NO.
	55	0711.2R & 1011.1BR	COOK	741	467
239 SHEETS	CONTRACT NO. 60999				
FED. ROAD DIST. NO. 1 ILLINOIS FED. AID PROJECT					

4/28/2011

p:\01345\structure\2 Central Ave. 016-0724\55121.rvt

12:53:21 PM