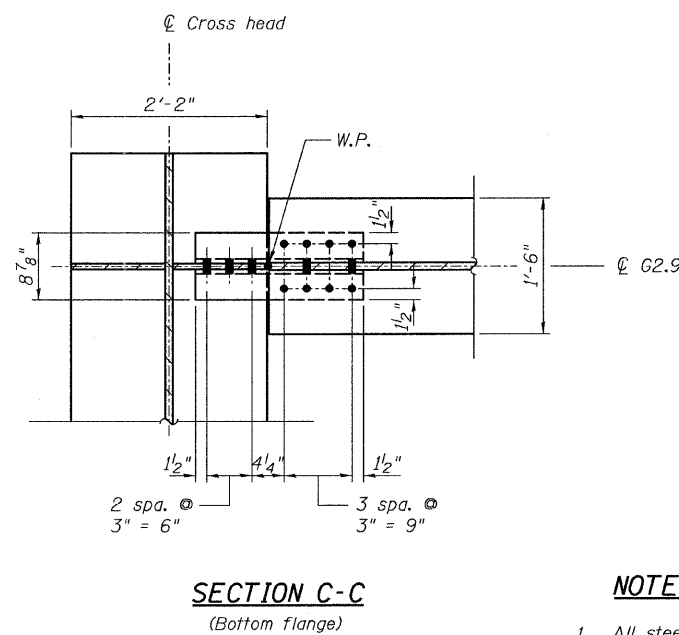
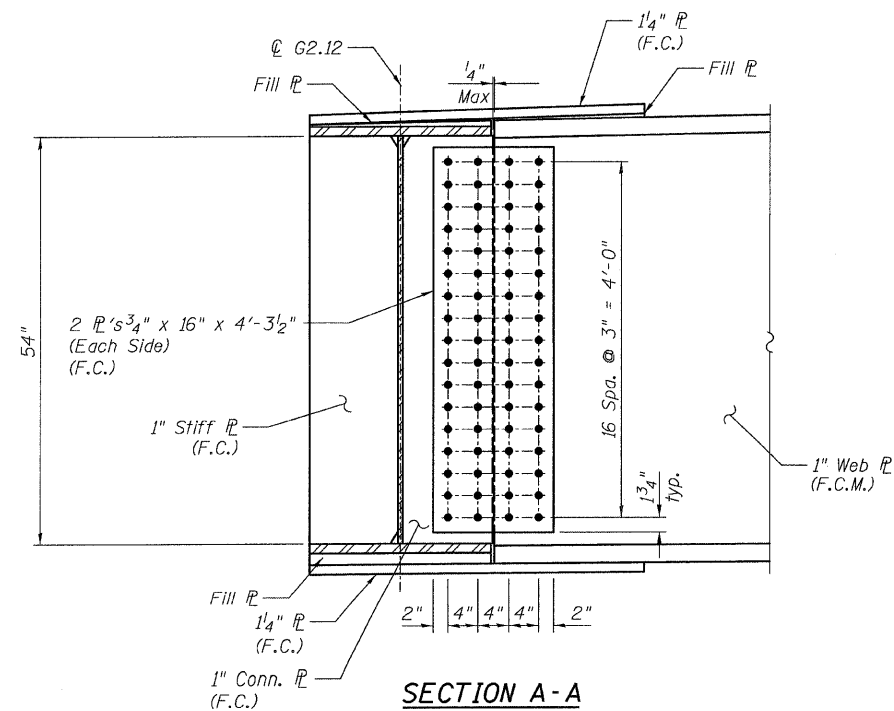
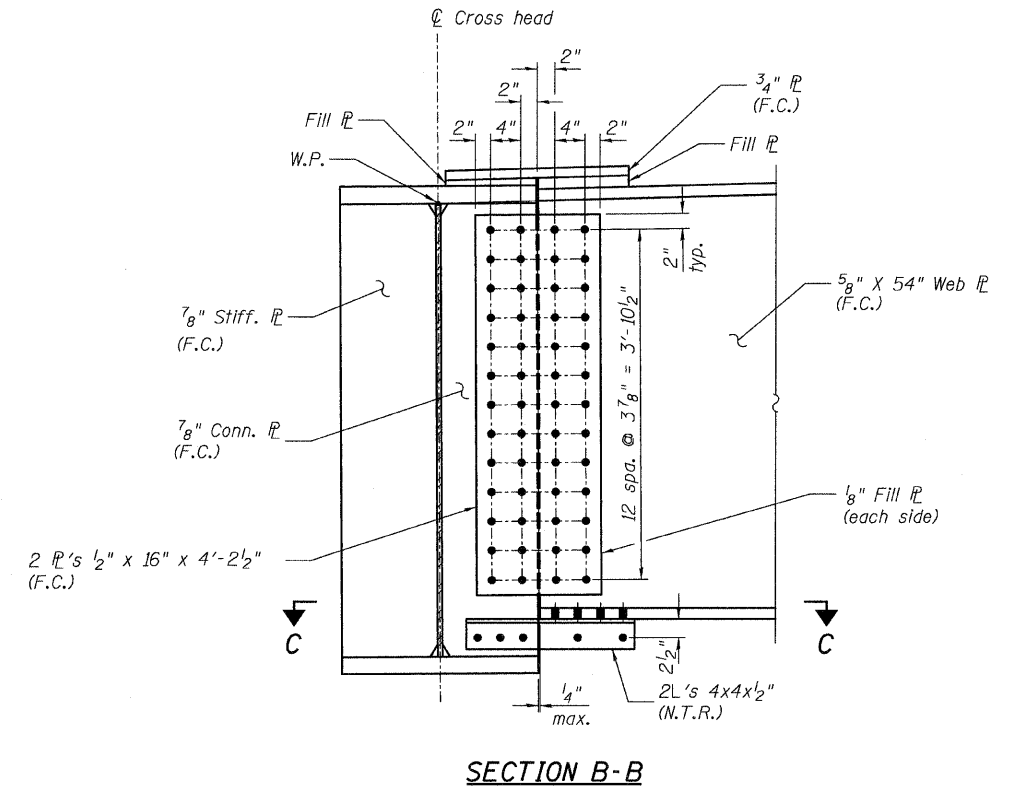
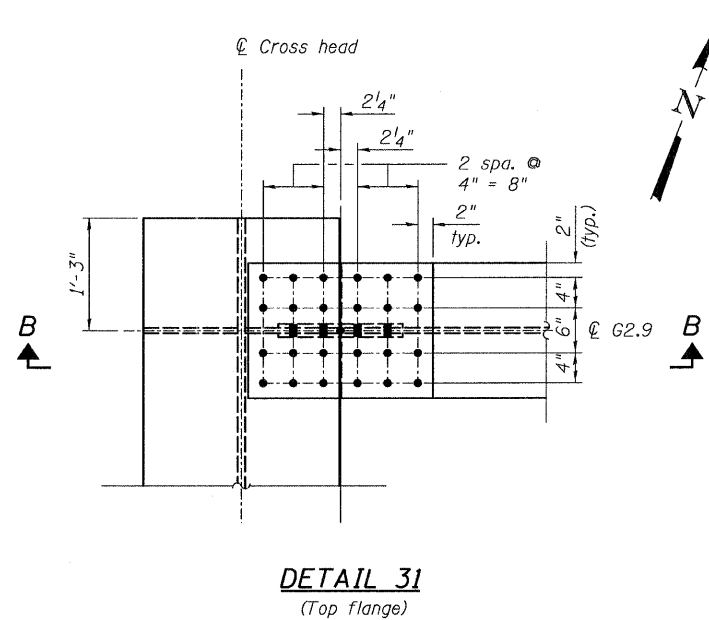
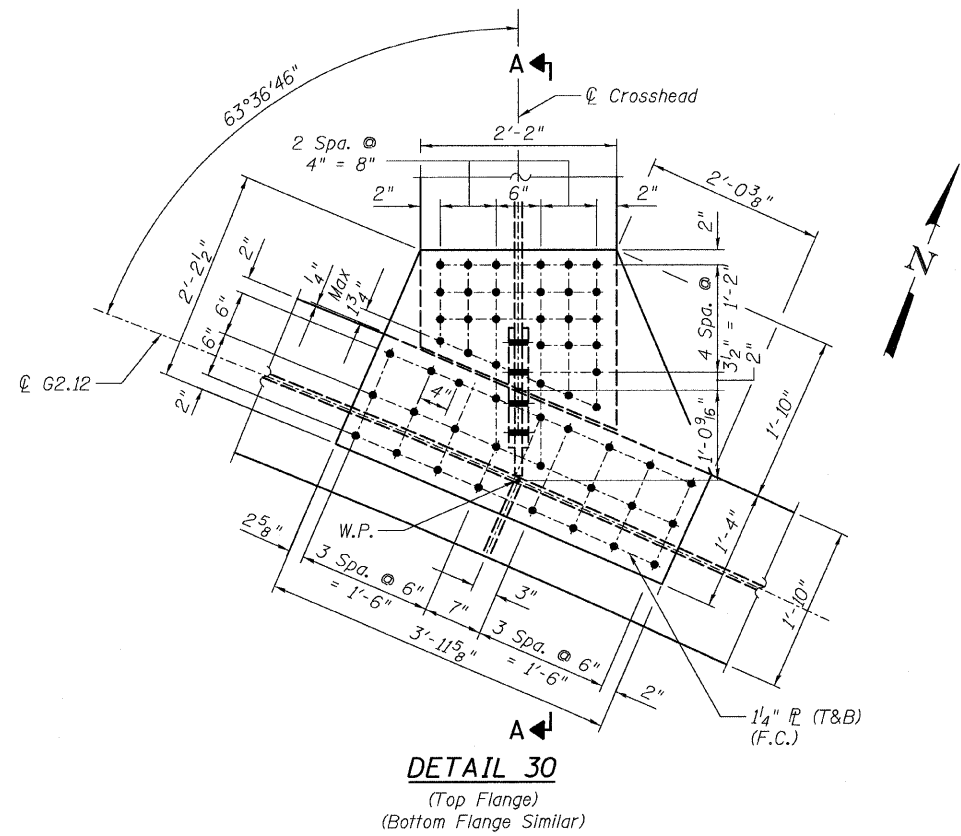


STATE OF ILLINOIS  
DEPARTMENT OF TRANSPORTATION



**NOTES:**

- All steel shall be AASHTO M 270 Grade 50.
- F.C. indicates Fracture Critical Material, AASHTO Zone II.
- Load carrying components designated "N.T.R." shall conform to the supplemental requirements for Notch Toughness, Zone 2.

**CONNECTION DETAILS 30 & 31**  
**RAMP 2 FLARE**  
**STRUCTURE NO. 016-0724**

**TYLIN** INTERNATIONAL

DESIGNED - JPN	REVISIONS	
	NAME	DATE
CHECKED - AMD,		
DRAWN - JMA		
CHECKED - AMD,		
DATE - 03/25/2011		

SHEET NO. 144	F.A.I. RTE.	SECTION	COUNTY	TOTAL SHEETS	SHEET NO.
	55	0711.2R & 1011.1BR	COOK	741	468
239 SHEETS	CONTRACT NO. 60999				
FED. ROAD DIST. NO. 1 ILLINOIS FED. AID PROJECT					

5/9/2011 9:09:08 AM p:\01345\structure\02\_Central\_Ave\_016-0724\_155721.dwg