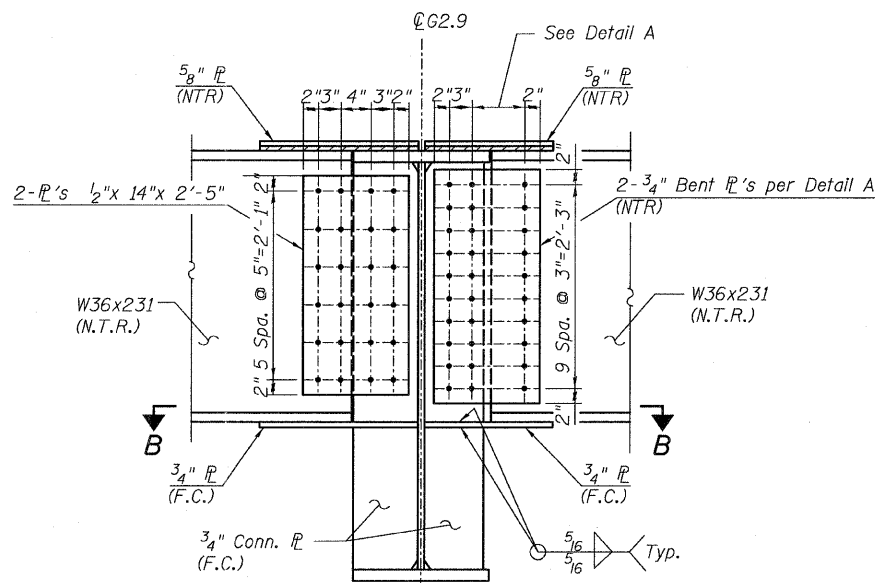
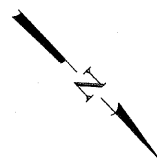
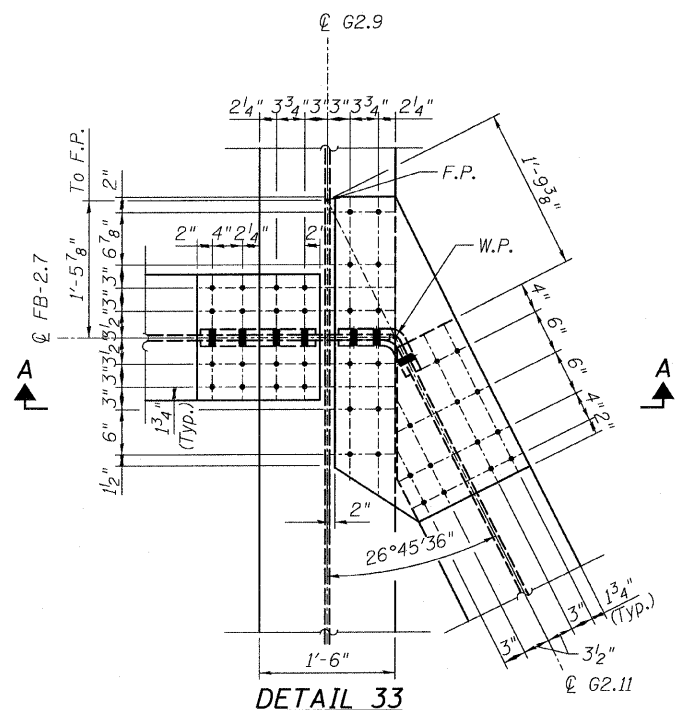


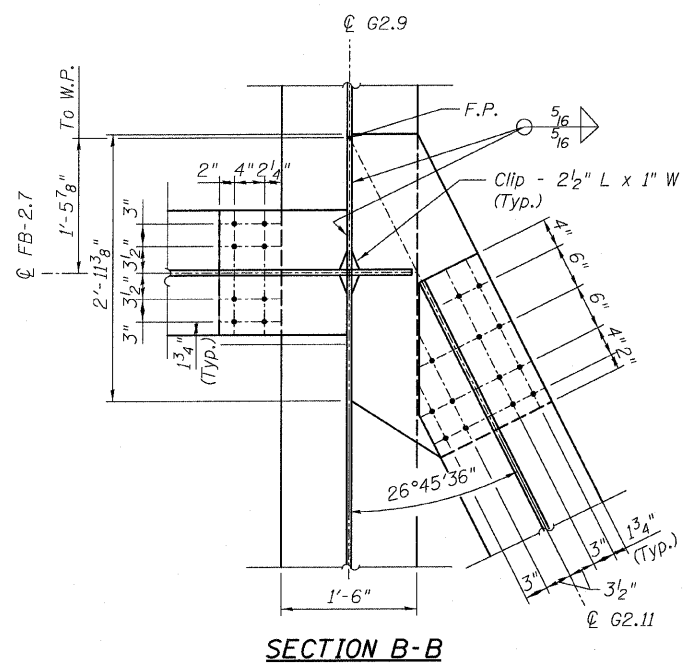
STATE OF ILLINOIS  
DEPARTMENT OF TRANSPORTATION

**NOTES:**

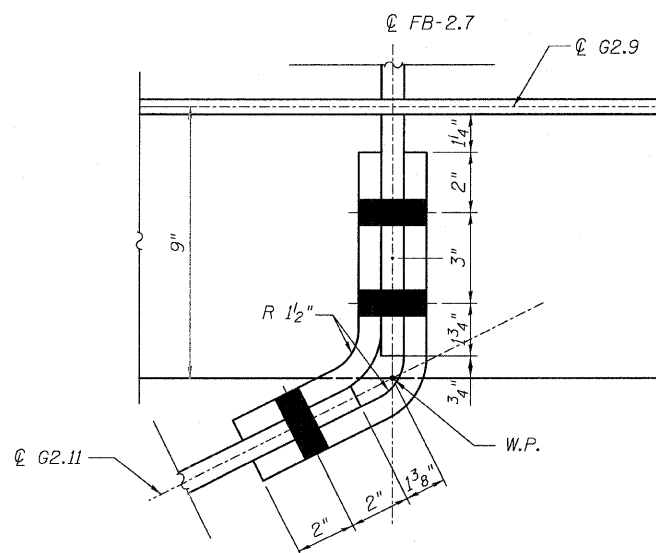
1. All steel shall be AASHTO M 270 Grade 50.
2. F.C. indicates Fracture Critical Material, AASHTO Zone 2.
3. Load carrying components designated "N.T.R." shall conform to the supplemental requirements for Notch Toughness, Zone 2.
4. Grain to run horizontally in bent  $\bar{r}$ .



**SECTION A-A**



**SECTION B-B**



**DETAIL A**

**CONNECTION DETAIL 33  
RAMP 2 FLARE  
STRUCTURE NO. 016-0724**

**TYLIN INTERNATIONAL**

DESIGNED - JPN  
CHECKED - AMD,  
DRAWN - JMA  
CHECKED - AMD,  
DATE - 03/25/2011

REVISIONS  
NAME DATE

SHEET NO. 146  
239 SHEETS

F.A.I RTE.	SECTION	COUNTY	TOTAL SHEETS	SHEET NO.
55	0711.2R & 1011.1BR	COOK	741	470
CONTRACT NO. 60999				
FED. ROAD DIST. NO. 1 ILLINOIS FED. AID PROJECT				

4/28/2011

pi:\01345\structure\C2\_Central\_Ave\_016-0724\15512f\_ramedt116.dgn

12:53:24 PM