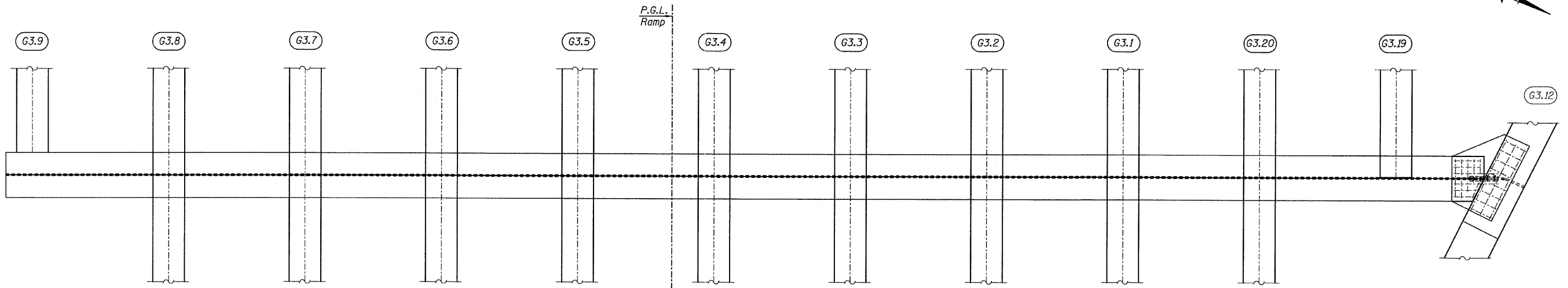
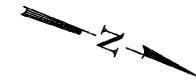
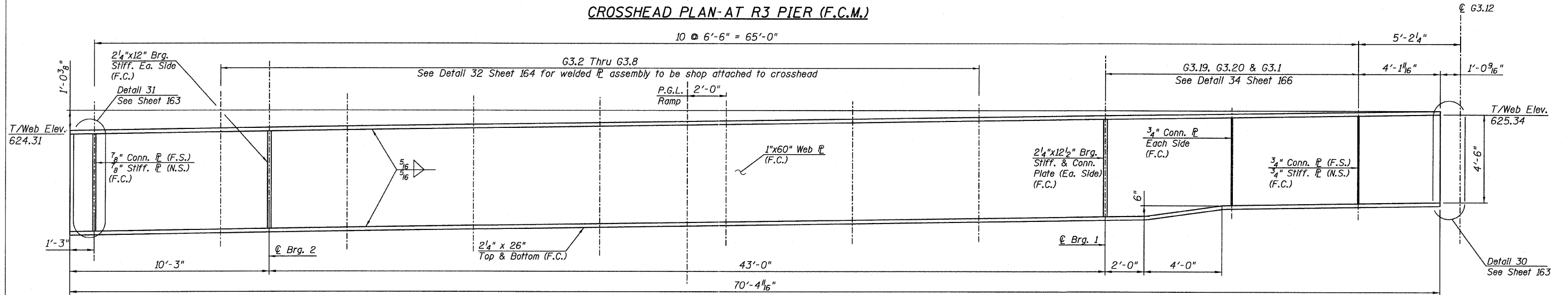


STATE OF ILLINOIS  
DEPARTMENT OF TRANSPORTATION



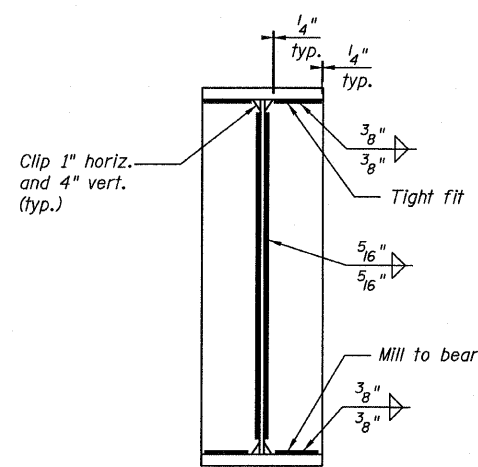
CROSSHEAD PLAN-AT R3 PIER (F.C.M.)



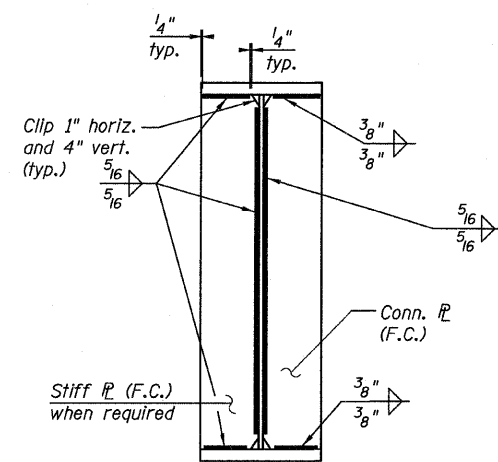
CROSSHEAD ELEVATION-AT R3 PIER (F.C.M.)  
(LOOKING WEST)

NOTES:

- All steel shown on this sheet shall be AASHTO M 270 Grade 50.
- Load carrying components designated "NTR" shall conform to the Supplemental Requirements for Notch Toughness, Zone 2.
- F.C. indicates Fracture Critical Material, AASHTO Zone II.



BEARING STIFFENER



CONNECTION PLATE  
DETAIL

TOP OF WEB ELEVATIONS  
(For Fabrication Only)

LOCATION	ELEVATION
C BRG 1	625.09
C BRG 2	624.46

CROSSHEAD DETAILS  
RAMP 3 FLARE  
STRUCTURE NO. 016-0724

TYLIN INTERNATIONAL	DESIGNED - JPN	REVISIONS		SHEET NO. 156	F.A.I. RTE. 55	SECTION 0711.2R & 1011.1BR	COUNTY COOK	TOTAL SHEETS 741	SHEET NO. 480
	CHECKED - AMD,	NAME	DATE						
	DRAWN - JMA								
	CHECKED - AMD,								
DATE - 03/25/2011				239 SHEETS	CONTRACT NO. 60999				
					FED. ROAD DIST. NO. 1 ILLINOIS FED. AID PROJECT				

12:53:35 PM p:\01345\structure\02\_Central\_Ave\_016-0724\155131\_ramped17.dwg