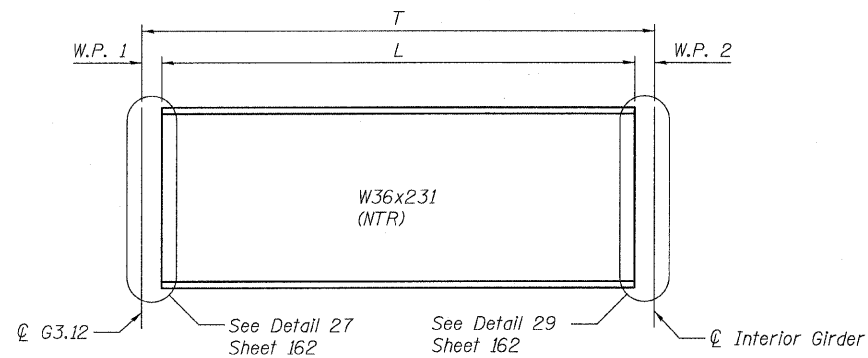
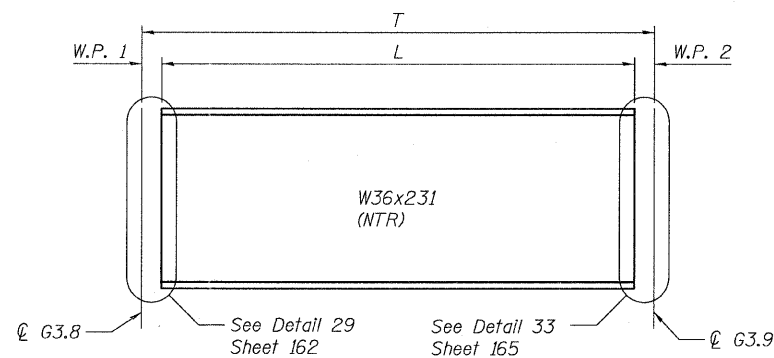


STATE OF ILLINOIS  
DEPARTMENT OF TRANSPORTATION



**FLOOR BEAM ELEVATION**

(FB-3.1 & FB-3.3)  
(Looking East)

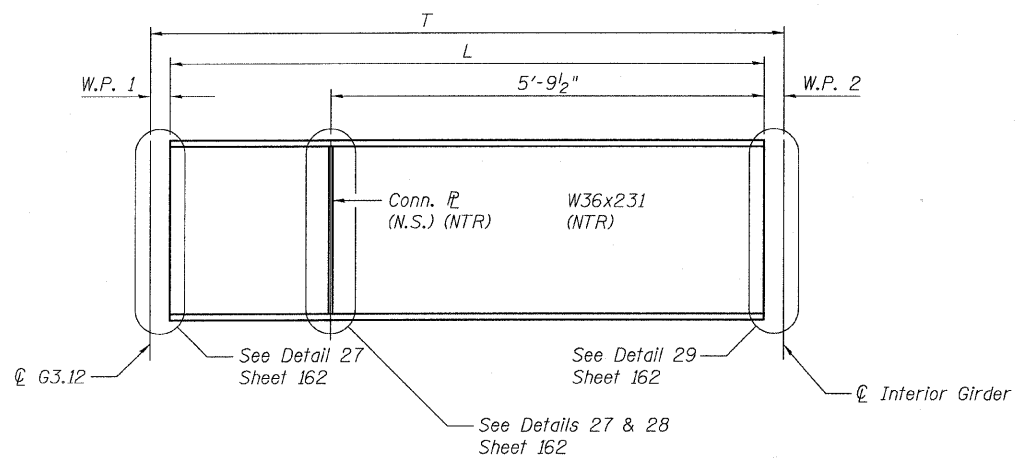


**F.B. 3.7 ELEVATION**

(Looking East)

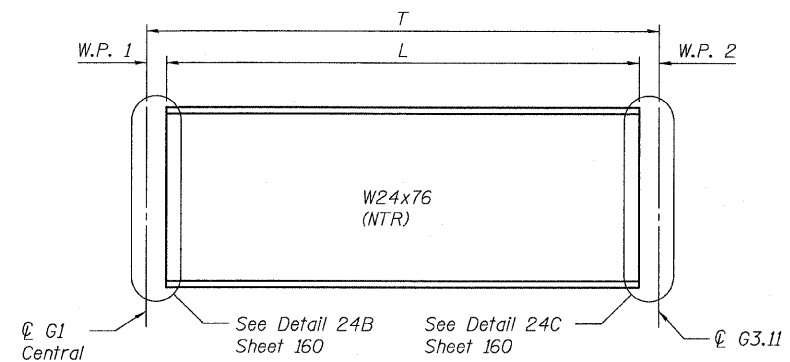
Floor Beam	W.P. 1	W.P. 2	L	T
FB-3.2	11 <sup>7</sup> / <sub>16</sub> "	8 <sup>1</sup> / <sub>2</sub> "	7'-7 <sup>1</sup> / <sub>16</sub> "	9'-3 <sup>3</sup> / <sub>8</sub> "
FB-3.4	11 <sup>15</sup> / <sub>16</sub> "	8 <sup>1</sup> / <sub>2</sub> "	7'-10 <sup>15</sup> / <sub>16</sub> "	9'-7 <sup>3</sup> / <sub>8</sub> "
FB-3.5	1'-0 <sup>15</sup> / <sub>16</sub> "	8 <sup>1</sup> / <sub>2</sub> "	7'-7 <sup>3</sup> / <sub>16</sub> "	9'-5"
FB-3.6	1'-1 <sup>1</sup> / <sub>2</sub> "	8 <sup>1</sup> / <sub>2</sub> "	7'-6 <sup>1</sup> / <sub>2</sub> "	9'-4 <sup>1</sup> / <sub>2</sub> "

Floor Beam	W.P. 1	W.P. 2	L	T
FB-3.1	11 <sup>5</sup> / <sub>16</sub> "	8 <sup>1</sup> / <sub>2</sub> "	5'-6 <sup>1</sup> / <sub>4</sub> "	7'-2 <sup>1</sup> / <sub>16</sub> "
FB-3.3	11 <sup>5</sup> / <sub>16</sub> "	8 <sup>1</sup> / <sub>2</sub> "	3'-11 <sup>13</sup> / <sub>16</sub> "	5'-7 <sup>15</sup> / <sub>16</sub> "
FB-3.7	8 <sup>1</sup> / <sub>2</sub> "	9 <sup>1</sup> / <sub>4</sub> "	5'-0 <sup>1</sup> / <sub>4</sub> "	6'-6"
FB-3.8	1'-1 <sup>3</sup> / <sub>16</sub> "	2"	11'-2 <sup>13</sup> / <sub>16</sub> "	12'-6"



**FLOOR BEAM ELEVATION**

(FB-3.2, FB-3.4 thru FB-3.6)  
(Looking East)



**F.B. 3.8 ELEVATION**

(Looking North)

**NOTES:**

- All steel shown on this sheet shall conform to the requirements of AASHTO M270 GR 50.
- Load carrying components designated "NTR" shall conform to the supplemental requirements for Notch Toughness, Zone 2.
- N.S. denotes near side.
- For Connection Plate Detail see Sheet 152.

**FLOOR BEAM DETAILS  
RAMP 3 FLARE  
STRUCTURE NO. 016-0724**

<b>TYLIN INTERNATIONAL</b>	DESIGNED - JPN	REVISIONS		SHEET NO. 157	F.A.I. RTE.	SECTION	COUNTY	TOTAL SHEETS	SHEET NO.				
	CHECKED - AMD,	NAME	DATE		55					0711.2R & 1011.1BR	COOK	741	481
	DRAWN - JMA				CONTRACT NO. 60999								
	CHECKED - AMD,				FED. ROAD DIST. NO. 1 ILLINOIS FED. AID PROJECT								
	DATE - 03/25/2011			239 SHEETS									