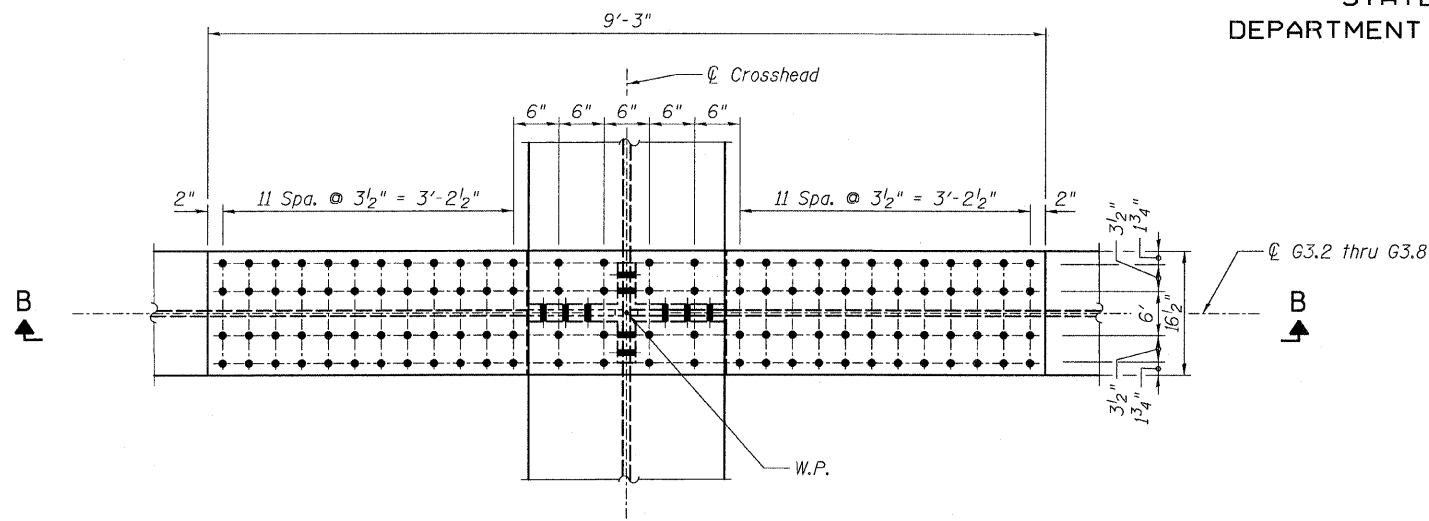
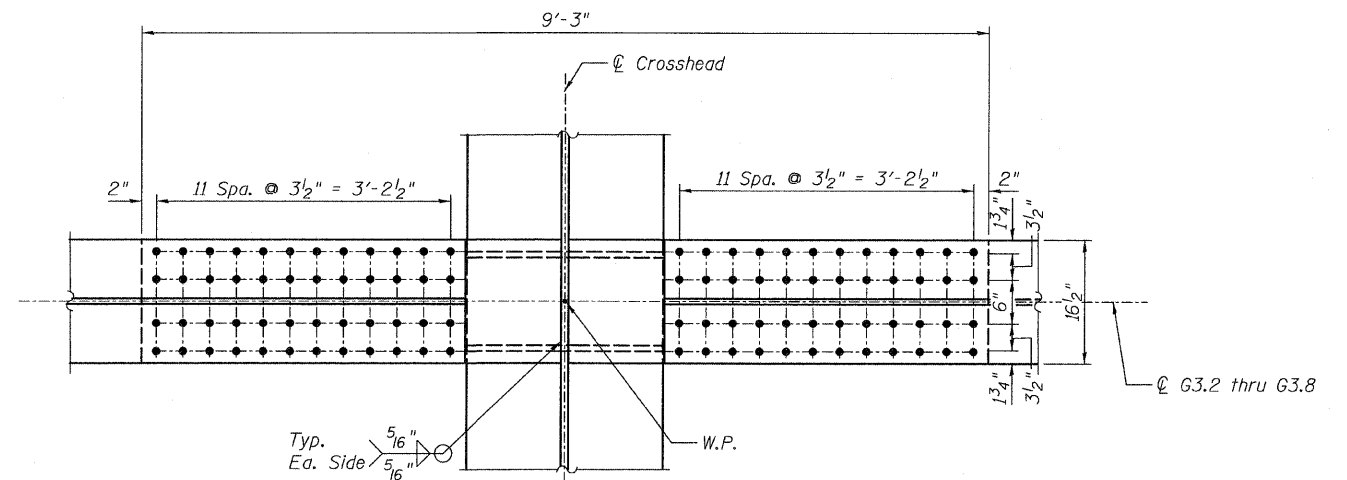


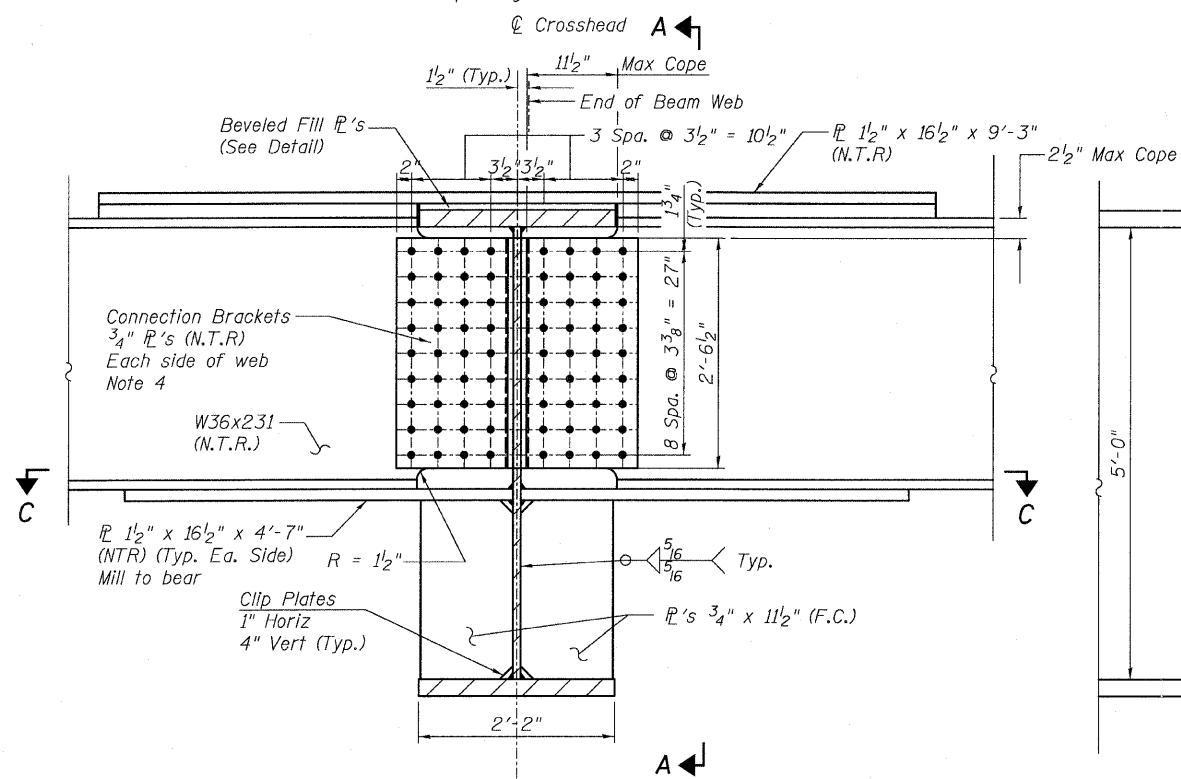
STATE OF ILLINOIS  
DEPARTMENT OF TRANSPORTATION



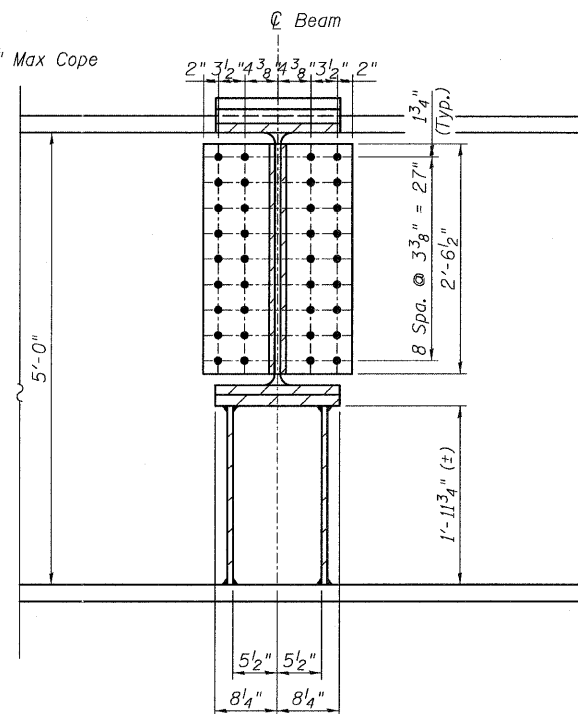
**DETAIL 32**  
(Top Flange)



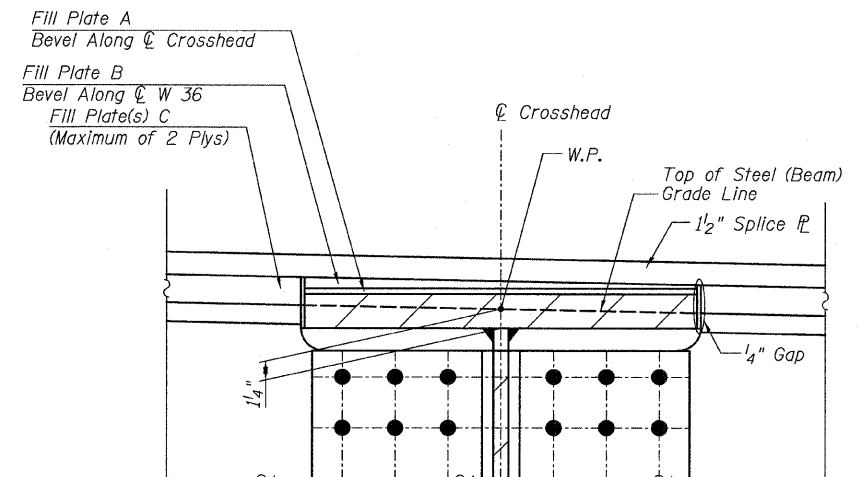
**SECTION C-C**  
(Bottom Flange)



**SECTION B-B**



**SECTION A-A**



**FILL PLATE DETAIL**

Note:  
Notify Engineer if total fill PL thickness to exceed 1 7/8"

**NOTES:**

- All steel shall be AASHTO M 270 Grade 50.
- All bolts shall be 1"  $\phi$  with 1 1/16"  $\phi$  holes.
- Load carrying components designated "N.T.R." shall conform to the supplemental requirements for Notch Toughness, Zone 2.
- 3/4" Connection brackets can be fabricated from single bent plate or 2 plates utilizing a pre-qualified, full penetration corner joint welded assembly.

**CONNECTION DETAIL 32**  
**RAMP 3 FLARE**  
**STRUCTURE NO. 016-0724**

**TYLIN INTERNATIONAL**

DESIGNED - JPN	REVISIONS	
	NAME	DATE
CHECKED - AMD,		
DRAWN - JMA		
CHECKED - AMD,		
DATE - 03/25/2011		

SHEET NO. 164	F.A.I. RTE.	SECTION	COUNTY	TOTAL SHEETS	SHEET NO.
	55	0711.2R & 1011.1BR	COOK	741	488
239 SHEETS	CONTRACT NO. 60999				
FED. ROAD DIST. NO. 1 ILLINOIS FED. AID PROJECT					

4/28/2011

\\01345\structure\02\_Central\_Ave\_016-0724\55531\_remed\15.dgn

12:57:52 PM