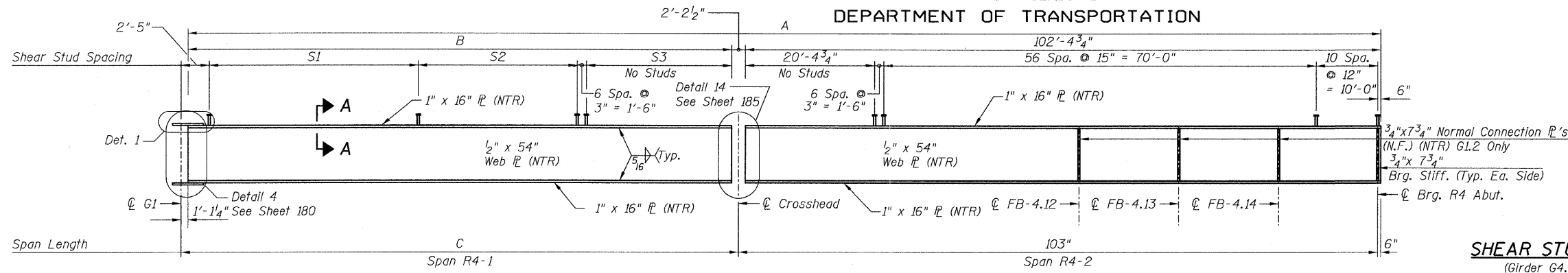


STATE OF ILLINOIS
DEPARTMENT OF TRANSPORTATION



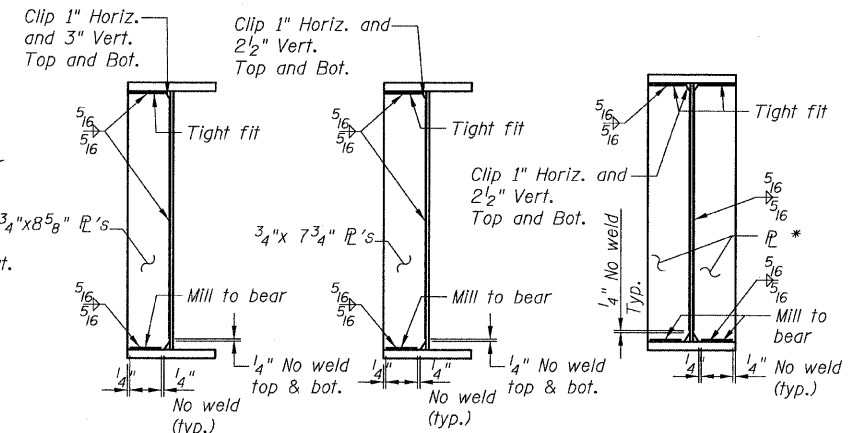
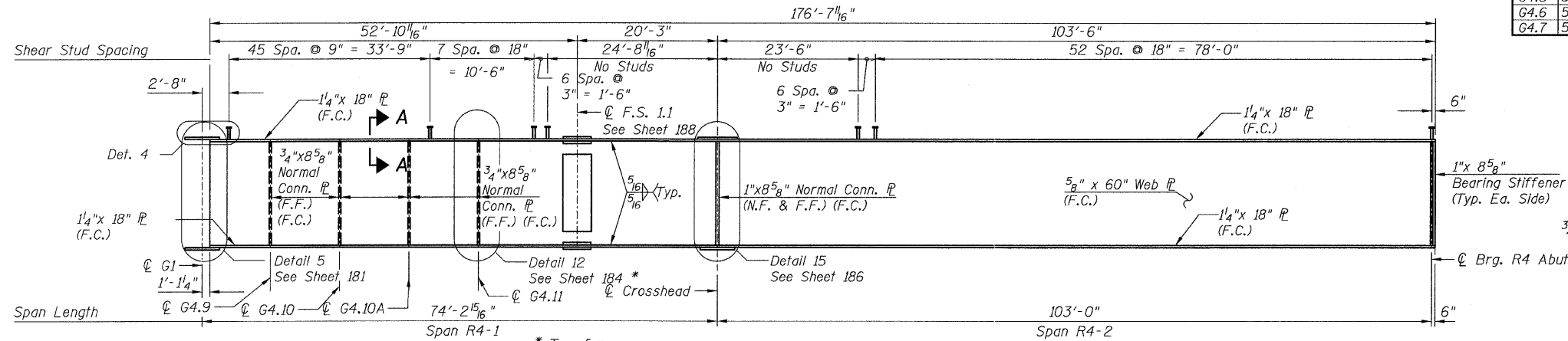
GIRDER DIMENSIONS
(Girder G4.2 thru G4.7)

	A	B	C
G4.2	192'-1 1/2"	87'-6 1/4"	89'-8 3/4"
G4.3	189'-6 9/16"	84'-11 5/16"	87'-1 5/16"
G4.4	186'-11 1/16"	82'-4 5/8"	84'-6 3/16"
G4.5	184'-4 5/8"	79'-9 3/8"	81'-11 1/8"
G4.6	181'-9 1/8"	77'-2 1/8"	79'-4 5/8"
G4.7	179'-2 5/8"	74'-7 3/8"	76'-9 1/8"

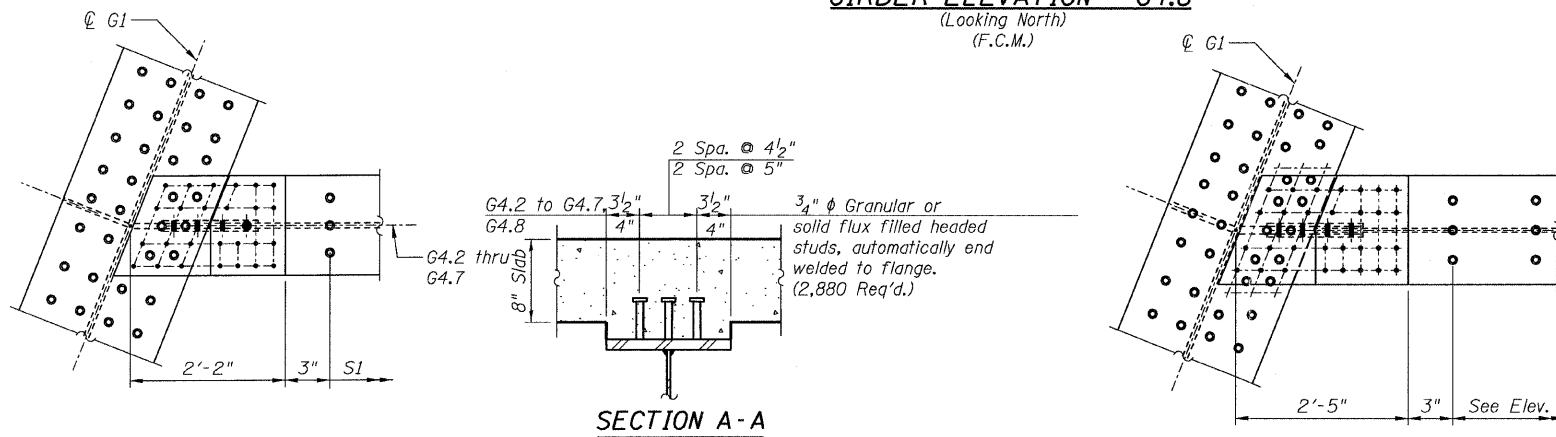
SHEAR STUD SPACINGS
(Girder G4.2 thru G4.7)

	S1	S2	S3
G4.2	51 Spa. @ 12" = 51'-0"	7 Spa. @ 15" = 8'-9"	24'-11 1/2"
G4.3	57 Spa. @ 12" = 57'-0"	3"	24'-10 9/16"
G4.4	50 Spa. @ 9" = 37'-6"	16 Spa. @ 12" = 16'-0"	26'-0 3/16"
G4.5	50 Spa. @ 9" = 37'-6"	13 Spa. @ 12" = 13'-0"	26'-5 9/16"
G4.6	50 Spa. @ 9" = 37'-6"	8 Spa. @ 15" = 10'-0"	26'-10 1/16"
G4.7	57 Spa. @ 9" = 42'-9"	2 Spa. @ 12" = 2'-0"	27'-0 5/8"

GIRDER ELEVATION - G4.2 THRU G4.7
(Looking North)

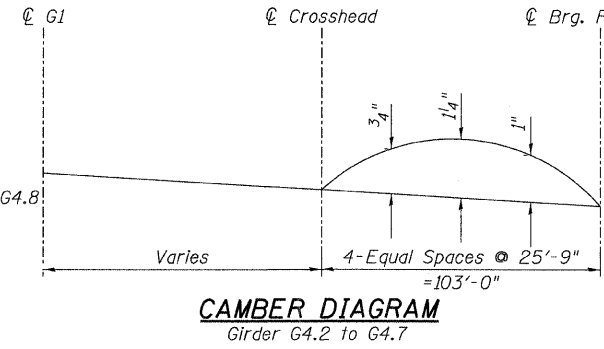


GIRDER ELEVATION - G4.8
(Looking North)
(F.C.M.)



CONN. P DETAIL G4.8
CONN. P DETAIL G4.2
BEARING STIFFENER
* 3/4" x 7 3/4" (G4.2 to G4.7)
1" x 8 5/8" (G4.8)

- NOTES:**
1. Load carrying components designated "NTR" shall conform to the supplemental requirements for Notch Toughness, Zone 2.
 2. F.C. denotes Fracture Critical material, AASHTO Zone II.
 3. For Field Splice details, See Sheet 188.
 4. N.F. denotes Near Face.
 5. F.F. denotes Far Face.
 6. Girder G4.8 does not require camber.



TOP OF WEB ELEVATIONS
(For Fabrication Only)

Location	Girder	G4.8
Centerline G1		628.30
Fieldsplice		626.66
Centerline Crosshead		626.05
Centerline Bearing R4-Abut.		624.19

TOP OF WEB ELEVATIONS
(For Fabrication Only)

Location	Girder	G4.2	G4.3	G4.4	G4.5	G4.6	G4.7
Centerline G1		628.16	628.19	628.23	628.26	628.23	628.27
Centerline Crosshead		626.66	626.56	626.46	626.36	626.27	626.17
Centerline Bearing R4-Abut.		624.79	624.70	624.60	624.50	624.40	624.31

GIRDER ELEVATIONS 2
RAMP 4 FLARE
STRUCTURE NO. 016-0724

TYLIN INTERNATIONAL	DESIGNED - EKH, JMA, PK	REVISIONS		SHEET NO. 172	F.A.I. RTE.	SECTION	COUNTY	TOTAL SHEETS	SHEET NO.	
	CHECKED - AMD,	NAME	DATE		55	0711.2R & 1011.1BR	COOK	741	496	
	DRAWN - EKH, JMA, PK				239 SHEETS	CONTRACT NO. 60999				
	CHECKED - AMD,					FED. ROAD DIST. NO. 1 ILLINOIS FED. AID PROJECT				
	DATE - 03/25/2011									