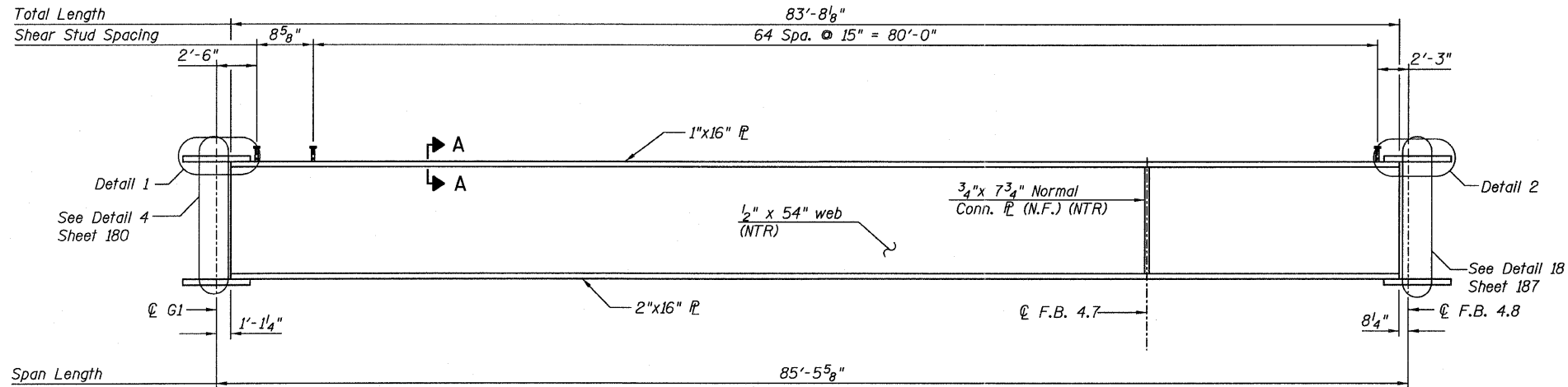
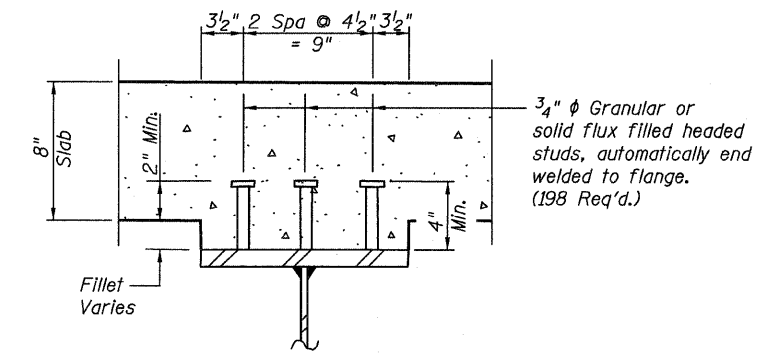


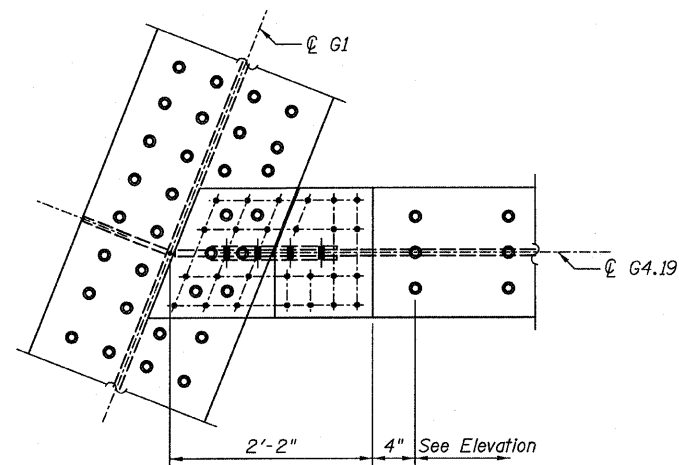
STATE OF ILLINOIS
DEPARTMENT OF TRANSPORTATION



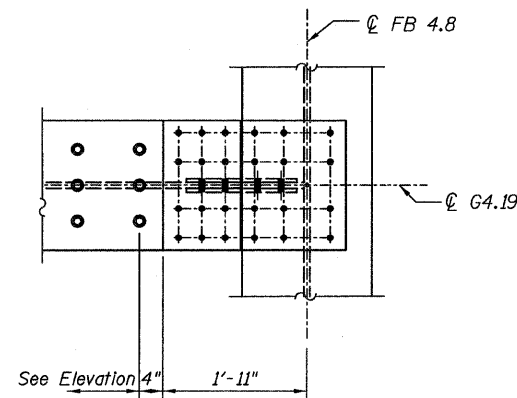
GIRDER ELEVATION - G4.19
(Looking South)



SECTION A-A



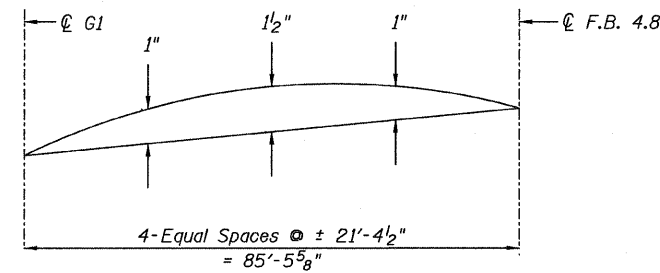
DETAIL 1



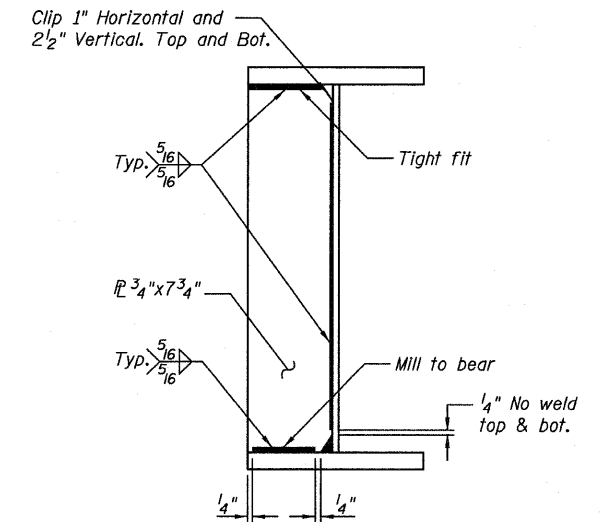
DETAIL 2

TOP OF WEB ELEVATIONS
(For Fabrication Only)

Location	Elevation
Centerline G1	628.06
Centerline F.B. 4.8	627.43



CAMBER DIAGRAMS



TYPICAL CONN. P DETAIL
(• Floor beams)

NOTES:

- All steel shown on this sheet shall conform to the requirements of AASHTO M270 GR 50.
- Load carrying components designated "NTR" shall conform to the supplemental requirements for Notch Toughness, Zone 2.
- N.F. denotes Near Face.

GIRDER ELEVATIONS 6
RAMP 4 FLARE
STRUCTURE NO. 016-0724

TYLIN INTERNATIONAL	DESIGNED - EKH, JMA, PK	REVISIONS		SHEET NO. 176	F.A.I. RTE.	SECTION	COUNTY	TOTAL SHEETS	SHEET NO.	
	CHECKED - AMD,	NAME	DATE		55	0711.2R & 1011.1BR	COOK	741	500	
	DRAWN - EKH, JMA, PK				239 SHEETS	CONTRACT NO. 60999				
	CHECKED - AMD,					FED. ROAD DIST. NO. 1	ILLINOIS	FED. AID PROJECT		
	DATE - 03/25/2011									