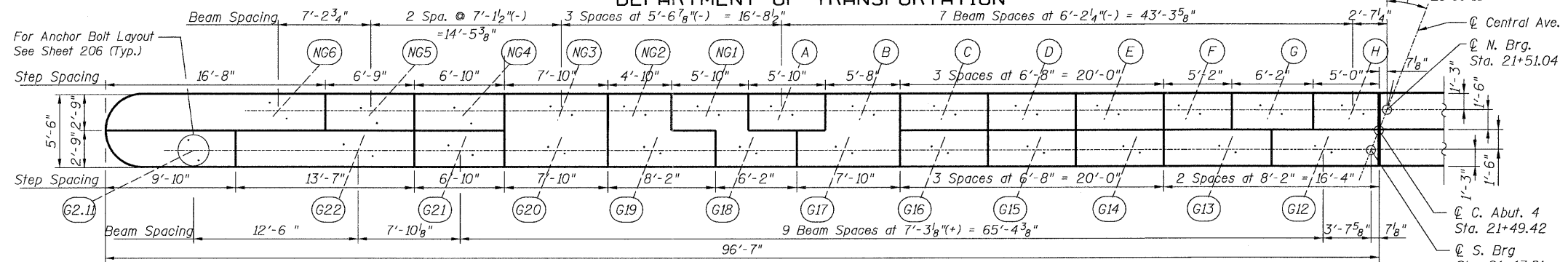


STATE OF ILLINOIS
DEPARTMENT OF TRANSPORTATION

NOTES

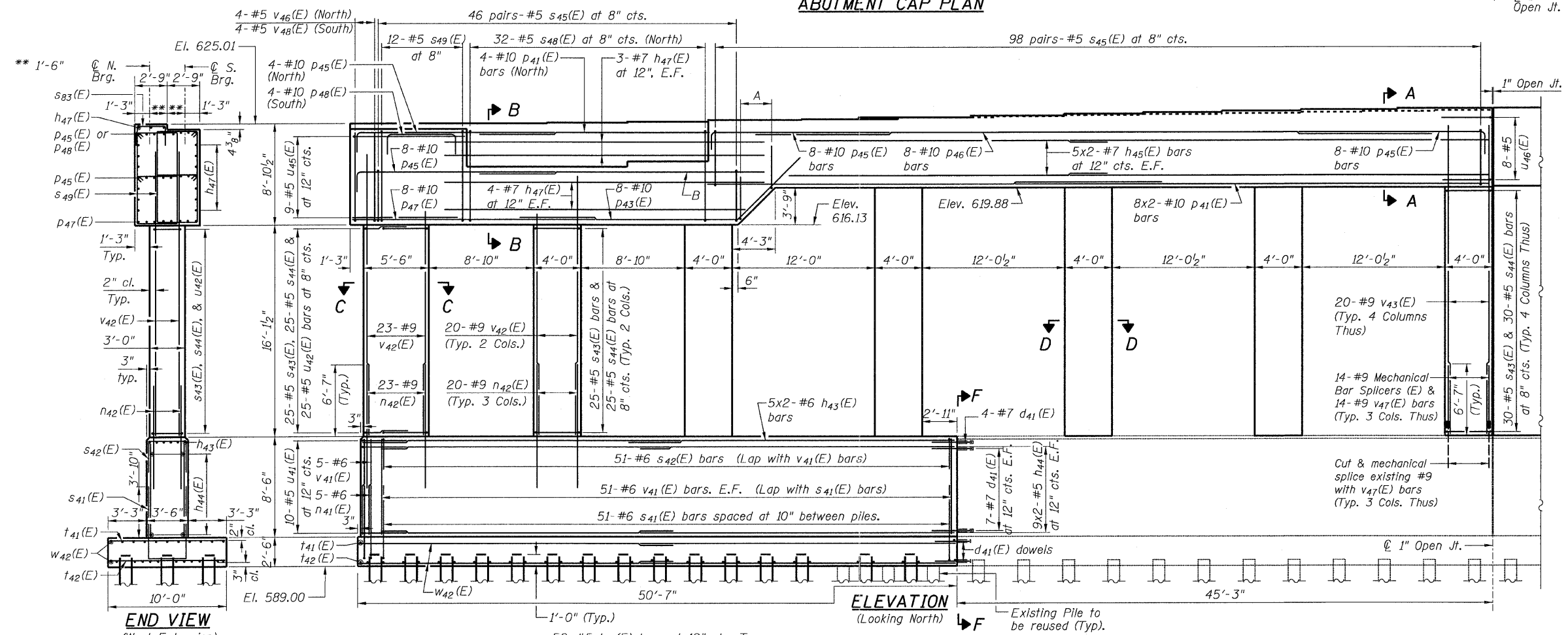
1. Work this sheet with sheets sheet 203 thru 206.
2. For notes see sheet 203.
3. See sheet 205 for step reinforcement.



ABUTMENT CAP PLAN

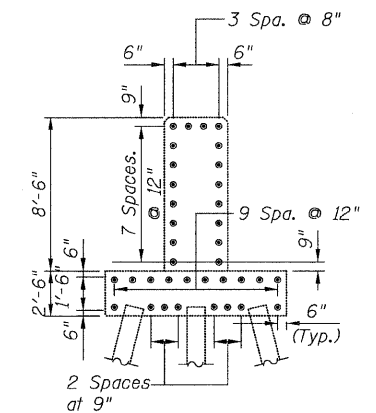
BRIDGE SEAT ELEVATIONS

North Bearings		South Bearings	
Girder Line	Seat Elevation	Girder Line	Seat Elevation
NG6	625.01	G2.11	624.43
NG5	625.12	G22	621.38
NG4	625.27	G21	621.86
NG3	625.13	G20	625.13
NG2	625.28	G19	625.28
NG1	625.38	G18	625.38
A	625.48	G17	625.56
B	625.56	G16	625.71
C	625.64	G15	625.85
D	625.72	G14	625.95
E	625.80	G13	626.07
F	625.88	G12	626.18
G	625.96		
H	626.04		



ELEVATION
(Looking North)

- A: 4-#5 s₈₄(E) at 12" cts.
- B: 8-#10 p₄₁(E) bars
- * Cut to fit in field.

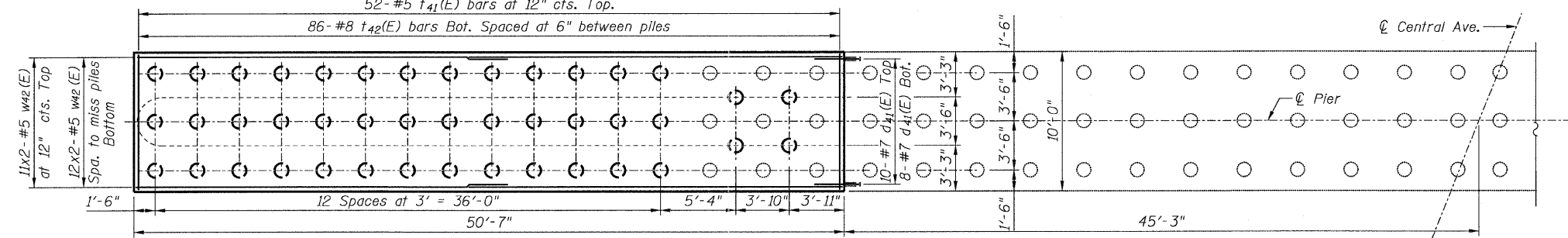


SECTION F-F
(West Extension)

PILE DATA

Type: 12" φ x 0.25" Wall
Nominal Required Bearing: 270 kips
Allowable Resistance Available: 90 kips
Estimated Length: 47 ft
No. Production Piles: 42
No. Test Piles: 1

- ⊙ Proposed Pile
- Existing Pile



FOOTING PLAN

C. ABUT. 4 REPL. & WID.-WEST
CENTRAL/I-55
STRUCTURE NO. 016-0724

TYLIN INTERNATIONAL

DESIGNED	MB	REVISIONS	
CHECKED	AMD,	NAME	DATE
DRAWN	MB		
CHECKED	AMD,		
DATE	03/25/2011		

SHEET NO. 204	F.A.I. RTE.	SECTION	COUNTY	TOTAL SHEETS	SHEET NO.
	55	0711.2R & 1011.1BR	COOK	741	528
239 SHEETS	CONTRACT NO. 60999				
FED. ROAD DIST. NO. 1 ILLINOIS FED. AID PROJECT					

4/25/25 PM
016-0724-155e2abut4.dgn
5/10/2011