

STATE OF ILLINOIS
DEPARTMENT OF TRANSPORTATION

NOTES

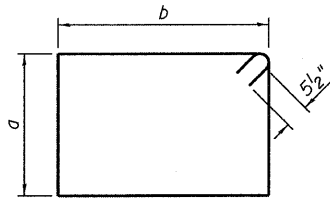
1. Work this sheet with sheets 207 thru 209.

BILL OF MATERIAL

Bar	No.	Size	Length	Shape
d ₆₁ (E)	298	#7	3'-1"	—
h ₆₁ (E)	20	#5	24'-6"	—
h ₆₂ (E)	48	#5	35'-0"	—
h ₆₃ (E)	10	#5	8'-3"	—
h ₆₄ (E)	10	#5	43'-2"	—
h ₆₅ (E)	5	#5	21'-5"	—
h ₆₆ (E)	10	#6	34'-4"	—
h ₆₇ (E)	16	#5	34'-4"	—
h ₆₈ (E)	5	#5	14'-2"	—
n ₆₁ (E)	190	#9	14'-3"	—
n ₆₂ (E)	10	#6	9'-3"	—
p ₆₁ (E)	16	#10	25'-8"	—
p ₆₂ (E)	16	#10	20'-5"	—
p ₆₃ (E)	16	#10	55'-7"	—
p ₆₄ (E)	16	#10	25'-11"	—
p ₆₅ (E)	16	#10	56'-10"	—
p ₆₆ (E)	16	#10	17'-1"	—
p ₆₇ (E)	16	#10	31'-9"	—
s ₆₁ (E)	202	#5	20'-7"	—
s ₆₂ (E)	136	#5	18'-1"	—
s ₆₃ (E)	145	#5	11'-2"	—
s ₆₄ (E)	44	#5	13'-7"	—
s ₆₅ (E)	72	#5	17'-7"	—
s ₆₆ (E)	224	#5	3'-8"	—
s ₆₇ (E)	76	#6	11'-4"	—
s ₆₈ (E)	64	#6	20'-2"	—
s ₆₉ (E)	60	#5	15'-9"	—
s ₇₀ (E)	40	#5	15'-2"	—
s ₇₁ (E)	202	#5	19'-11"	—
s ₇₂ (E)	8	#5	14'-8"	—
t ₆₁ (E)	74	#8	15'-8"	—
t ₆₂ (E)	88	#11	15'-8"	—
t ₆₃ (E)	112	#8	5'-11"	—
u ₆₁ (E)	14	#5	13'-11"	—
u ₆₂ (E)	18	#5	11'-6"	—
u ₆₃ (E)	36	#5	11'-6"	—
u ₆₄ (E)	10	#5	12'-4"	—
v ₆₁ (E)	150	#9	15'-7"	—
v ₆₂ (E)	40	#9	18'-1"	—
v ₆₄ (E)	40	#9	13'-11"	—
w ₆₁ (E)	74	#8	33'-9"	—
w ₆₂ (E)	44	#8	22'-8"	—
Test Pile Metal Shells	Each		2	
Structure Excavation	Cu Yd		346	
Concrete Structures	Cu Yd		587.0	
Reinforcement Bars, Epoxy Coated	Pounds		86,720	
Furnishing Metal Shell Piles 12" x 0.25"	Foot		6,200	
Driving Piles	Foot		6,200	
Concrete Sealer	Sq Ft		6,351	

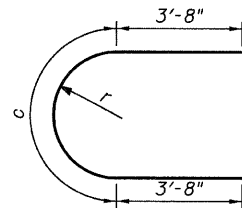
MIN. LAP LENGTH
(Unless noted otherwise)

#5	3'-8"
#8	7'-8"
#10	12'-4"



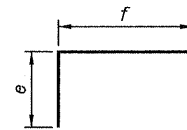
Bar	a	b
s ₆₁ (E)	6'-10"	3'-0"
s ₆₂ (E)	5'-7"	3'-0"
s ₆₄ (E)	2'-8"	3'-8"
s ₆₅ (E)	2'-8"	5'-8"
s ₆₉ (E)	4'-6"	2'-11"
s ₇₁ (E)	6'-6"	3'-0"

BARS s₆₁(E), s₆₂(E), s₆₄(E), s₆₅(E), s₆₉(E) & s₇₁(E)



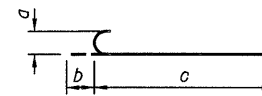
Bar	c	r
u ₆₁ (E)	6'-7"	2'-1"
u ₆₃ (E)	4'-2"	1'-4"
u ₆₄ (E)	5'-0"	1'-7"

BARS u₆₁(E), u₆₃(E) & u₆₄(E)



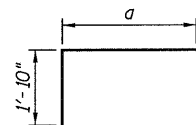
Bar	e	f
s ₆₃ (E)	3'-6"	4'-2"
s ₆₇ (E)	4'-1"	3'-2"
s ₆₈ (E)	8'-6"	3'-2"
s ₇₂ (E)	5'-3"	4'-2"
u ₆₂ (E)	3'-8"	4'-2"

BARS s₆₃(E), s₆₇(E), s₆₈(E), s₇₂(E) & u₆₂(E)



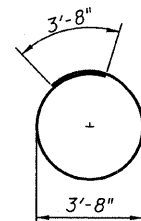
Bar	a	b	c
d ₆₁ (E)	7"	10"	2'-3"
n ₆₁ (E)	1'-1 1/4"	1'-5"	12'-10"
n ₆₂ (E)	6"	8"	8'-7"

BARS d₆₁(E), n₆₁(E) & n₆₂(E)

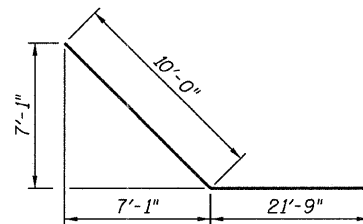


Bar	a
p ₆₁ (E)	23'-10"
p ₆₂ (E)	18'-7"
p ₆₆ (E)	15'-4"

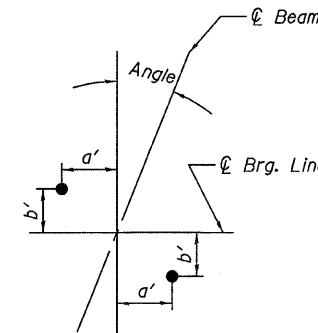
BARS p₆₁(E), p₆₂(E) & p₆₆(E)



BAR s₇₀(E)

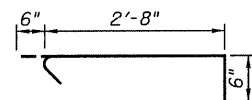


BARS p₆₇(E)



ANCHOR BOLT LAYOUT

Beam	Angle	a'	b'
G1 & G22	21°39'15"	14 1/8"	5 5/8"
G2 & G21	21°39'15"	11 3/8"	4 1/2"
G3 thru G20	21°39'15"	7 5/8"	3"



BARS s₆₆(E)

PIER 6 - DETAILS 2
CENTRAL/I-55
STRUCTURE NO. 016-0724

TYLIN INTERNATIONAL	DESIGNED - MB	REVISIONS		SHEET NO. 210	F.A.I. RTE.	SECTION	COUNTY	TOTAL SHEETS	SHEET NO.	
	CHECKED - AMD,	NAME	DATE		55	0711.2R & 1011.1BR	COOK	741	534	
	DRAWN - MB				CONTRACT NO. 60999					
	CHECKED - AMD,				FED. ROAD DIST. NO. 1 ILLINOIS FED. AID PROJECT					
	DATE - 03/25/2011									