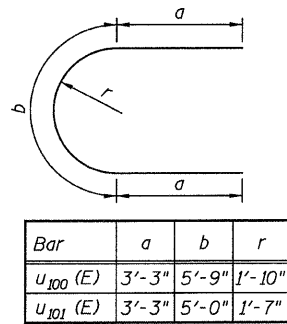
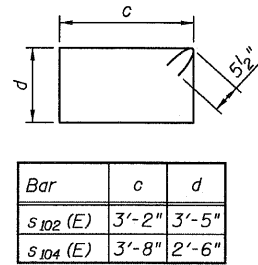


STATE OF ILLINOIS
DEPARTMENT OF TRANSPORTATION



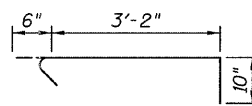
Bar	a	b	r
u ₁₀₀ (E)	3'-3"	5'-9"	1'-10"
u ₁₀₁ (E)	3'-3"	5'-0"	1'-7"

BARS u₁₀₀ (E) & u₁₀₁ (E)

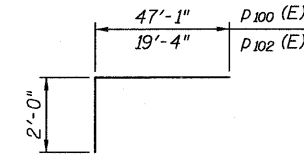


Bar	c	d
s ₁₀₂ (E)	3'-2"	3'-5"
s ₁₀₄ (E)	3'-8"	2'-6"

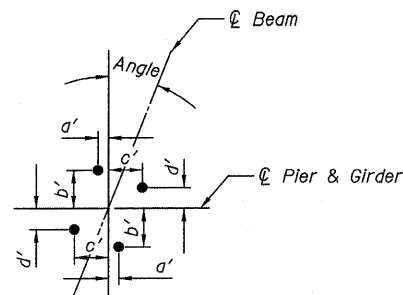
BARS s₁₀₂ (E) & s₁₀₄ (E)



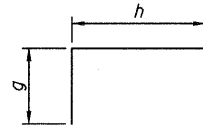
BAR s₁₀₃ (E)



BARS p₁₀₀ (E) & p₁₀₂ (E)

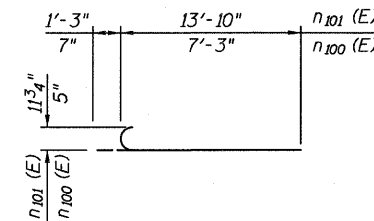


ANCHOR BOLT LAYOUT



Bar	g	h
s ₁₀₀ (E)	7'-3"	3'-8"
s ₁₀₁ (E)	6'-11"	3'-8"
u ₁₀₂ (E)	2'-0"	3'-4"
v ₁₀₁ (E)	10"	5'-5"

**BARS s₁₀₀ (E), s₁₀₁ (E),
u₁₀₂ (E) & v₁₀₁ (E)**



BARS n₁₀₀ (E) & n₁₀₁ (E)

Floating Bearing at Cross-head Beam					
Location	Angle	a'	b'	c'	d'
BRG. 1	00°00'00"	11 1/2"	1'-5 1/2"	11 1/2"	1'-5 1/2"
BRG. 2	00°00'00"	8 1/4"	1'-4 1/4"	8 1/4"	1'-4 1/4"

BILL OF MATERIAL

Bar	No.	Size	Length	Shape
h ₁₀₁ (E)	36	#5	27'-0"	—
h ₁₀₂ (E)	16	#5	28'-0"	—
h ₁₀₃ (E)	5	#5	24'-11"	—
n ₁₀₀ (E)	10	#5	7'-10"	⌋
n ₁₀₁ (E)	94	#9	15'-1"	⌋
p ₁₀₀ (E)	16	#10	49'-1"	⌋
p ₁₀₁ (E)	32	#10	33'-0"	⌋
p ₁₀₂ (E)	16	#10	21'-4"	⌋
s ₁₀₀ (E)	59	#5	18'-2"	⌋
s ₁₀₁ (E)	59	#5	17'-6"	⌋
s ₁₀₂ (E)	56	#5	14'-1"	⌋
s ₁₀₃ (E)	42	#5	4'-6"	⌋
s ₁₀₄ (E)	148	#5	13'-3"	⌋
t ₁₀₀ (E)	129	#8	13'-2"	—
u ₁₀₀ (E)	28	#5	12'-3"	⌋
u ₁₀₁ (E)	28	#5	11'-6"	⌋
u ₁₀₂ (E)	24	#5	7'-4"	⌋
v ₁₀₀ (E)	94	#9	14'-2"	⌋
v ₁₀₁ (E)	5	#5	7'-1"	⌋
w ₁₀₀ (E)	32	#8	31'-0"	—
w ₁₀₁ (E)	32	#8	31'-5"	—
Test Pile Metal Shells	Each		1	
Structure Excavation	Cu Yd		327	
Concrete Structures	Cu Yd		226.7	
Reinforcement Bars, Epoxy Coated	Pound		36,490	
Furnishing Metal Shell Piles 12" x 0.25"	Foot		2,360	
Driving Piles	Foot		2,360	

**RAMP 1 PIER DETAILS
STRUCTURE NO. 016-0724**

TYLIN INTERNATIONAL	DESIGNED - EKH	REVISIONS		SHEET NO. 213	F.A.I. RTE.	SECTION	COUNTY	TOTAL SHEETS	SHEET NO.
	CHECKED - AMD,	NAME	DATE		55	0711.2R & 1011.1BR	COOK	741	537
	DRAWN - EKH				239 SHEETS	CONTRACT NO. 60999			
	CHECKED - AMD,					FED. ROAD DIST. NO. 1	ILLINOIS	FED. AID PROJECT	
	DATE - 03/25/2011								

pi:\01345\structure\02 Central Ave. 016-0724\155-10ern4dtd.dgn 4/28/2011 11:17:21 PM