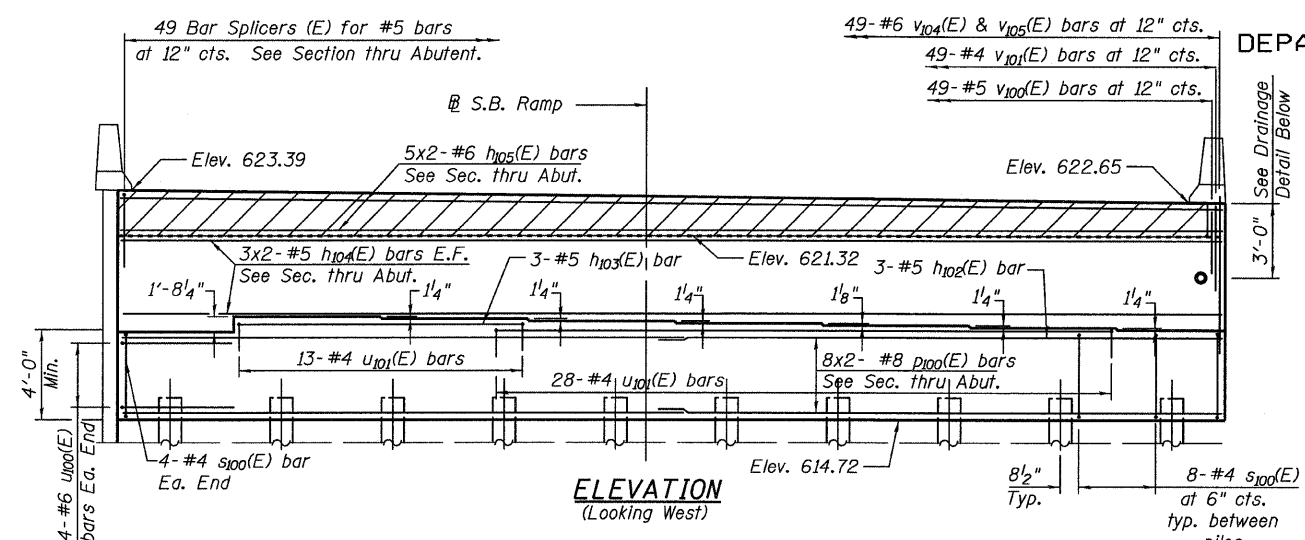
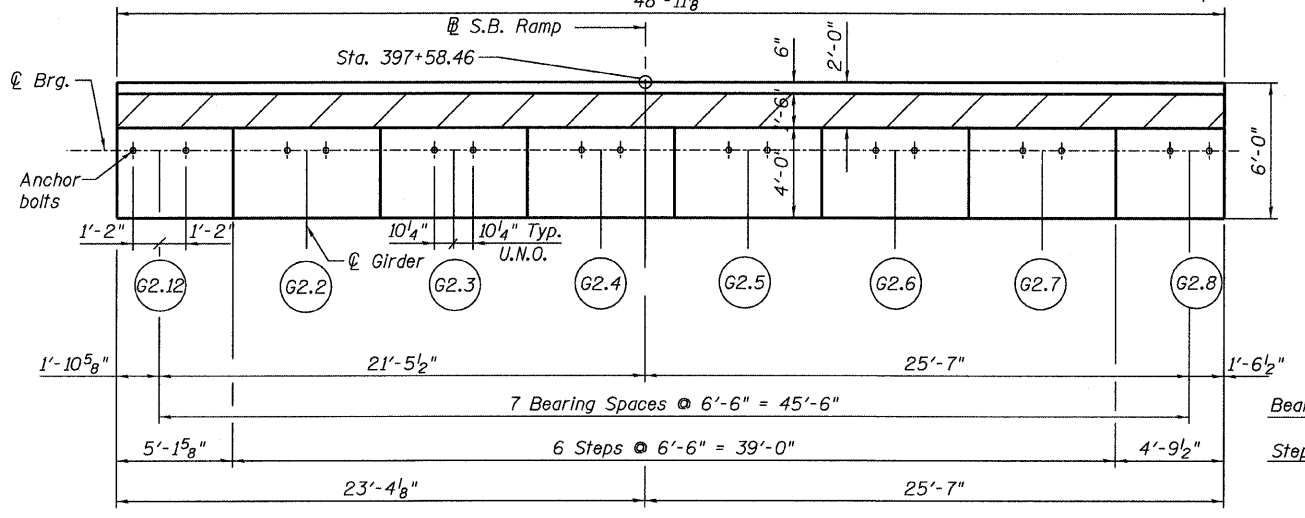


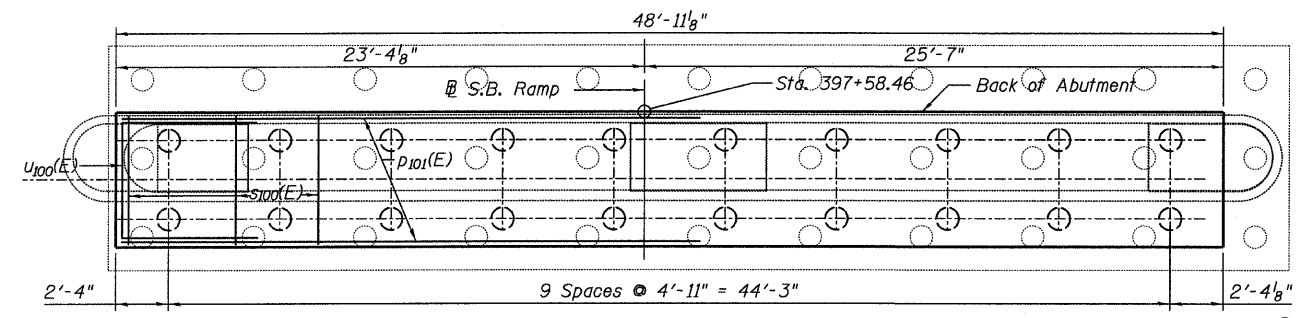
STATE OF ILLINOIS
DEPARTMENT OF TRANSPORTATION



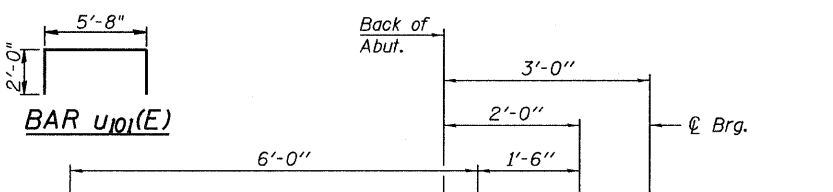
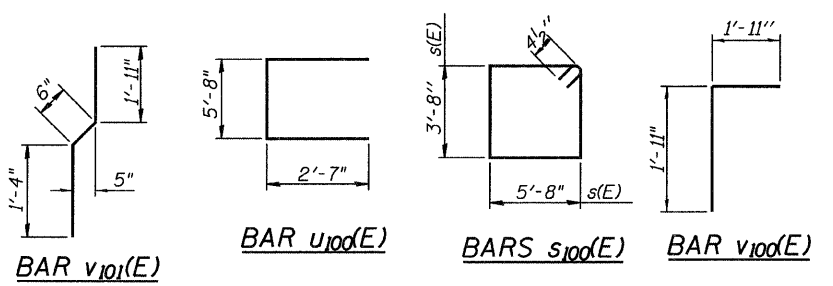
ELEVATION
(Looking West)



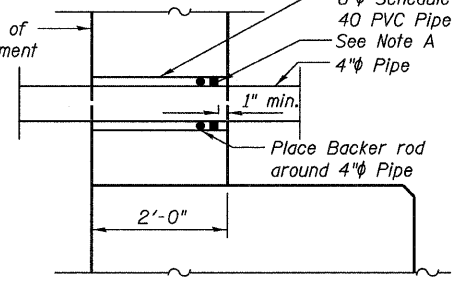
TOP VIEW



PLAN-PILE CAP



SEC. THRU ABUT.



DRAINAGE DETAIL

**BRIDGE SEAT
ELEVATIONS**

Beam	Elevation
G2.12	618.73
G2.2	620.42
G2.3	620.32
G2.4	620.22
G2.5	620.12
G2.6	620.03
G2.7	619.93
G2.8	619.83

MINIMUM BAR LAPS

Bar	Lap
#4	1'-9"
#5	2'-2"
#6	2'-7"
#6	3'-7" (Top)
#7	3'-5"
#7	4'-10" (Top)
#8	4'-6"

**RAMP 2 ABUTMENT
BILL OF MATERIAL**

Bar	No.	Size	Length	Shape
h102(E)	3	#5	28'-0"	
h103(E)	3	#5	12'-8"	
h104(E)	12	#5	25'-5"	
h105(E)	8	#6	25'-7"	
p101(E)	16	#8	26'-7"	
s100(E)	80	#4	19'-5"	
u100(E)	8	#6	10'-10"	
u101(E)	41	#5	9'-8"	
v100(E)	49	#5	3'-10"	
v101(E)	49	#4	3'-9"	
v104(E)	49	#6	5'-8"	
v105(E)	49	#6	3'-7"	
Structure Excavation	Cu. Yd.		166.0	
Concrete Structures	Cu. Yd.		61.4	
Reinforcement Bars, Epoxy Coated	Pound		4320	
Furnishing Metal Shell Piles 12"x 0.25"	Foot		1,235	
Driving Piles	Foot		1,235	
Test Pile Metal Shells	Each		1	
Concrete Sealer	Sq. Ft.		586	

PILE DATA

Type: Metal Shell 12" φ x 0.25" wall.
Nominal Required Bearing: 270 kips
Factored Resistance Available: 90 kips
Est. Length: 65'
No. Production Piles: 19
No. Test Piles: 1

NOTES:

- Space reinforcement in cap to miss anchor bolts.
- Pour steps monolithically with cap.
- Hatched area to be poured after superstructure forms have been removed. Quantity of concrete included with Concrete Superstructure.
- Bars indicated thus 20 x 3-#7 etc. indicates 20 lines of bars with three lengths per line.
- Piles shall be driven prior to placement of the reinforced select fill and coated with coal tar epoxy from the bottom of the select fill to 1" above the base of the abutment. The cost of the coal tar epoxy coating shall be included with the cost of the Furnishing Piles.
- Align bar splicer to be parallel to approach slab reinforcement.

**RAMP 2 ABUTMENT
STRUCTURE NO. 016-0724**

TYLIN INTERNATIONAL	DESIGNED - JMA	REVISIONS		SHEET NO. 214	F.A.I. RTE.	SECTION	COUNTY	TOTAL SHEETS	SHEET NO.	
	CHECKED - AMD,	NAME	DATE		55	0711.2R & 1011.1BR	COOK	741	538	
	DRAWN - JMA				CONTRACT NO. 60999					
	CHECKED - AMD,				FED. ROAD DIST. NO. 1 ILLINOIS FED. AID PROJECT					
	DATE - 03/25/2011			239 SHEETS						