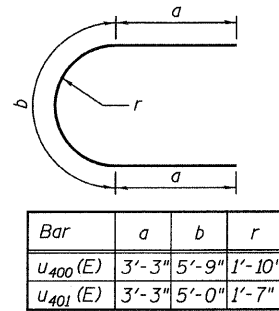
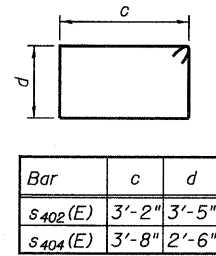


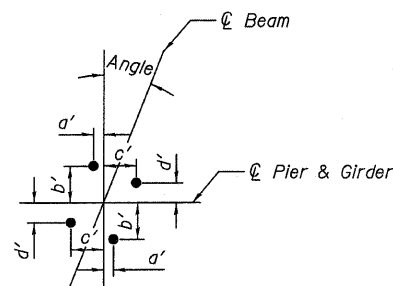
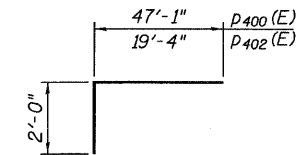
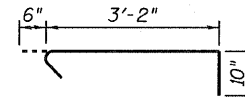
STATE OF ILLINOIS  
DEPARTMENT OF TRANSPORTATION



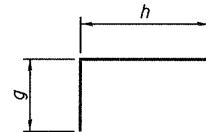
BARS u<sub>400</sub>(E) & u<sub>401</sub>(E)



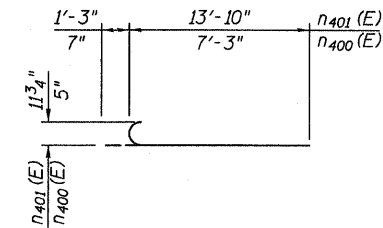
BARS s<sub>402</sub>(E) & s<sub>404</sub>(E)



Floating Bearing at Cross-head Beam					
Location	Angle	a'	b'	c'	d'
BRG. 1	00°00'00"	11 1/2"	1'-5 1/2"	11 1/2"	1'-5 1/2"
BRG. 2	00°00'00"	8 1/4"	1'-4 1/4"	8 1/4"	1'-4 1/4"



BARS s<sub>400</sub>(E), s<sub>401</sub>(E),  
u<sub>402</sub>(E) & v<sub>401</sub>(E)



BILL OF MATERIAL

Bar	No.	Size	Length	Shape
h <sub>401</sub> (E)	36	#5	27'-0"	—
h <sub>402</sub> (E)	16	#5	28'-0"	—
h <sub>403</sub> (E)	5	#5	26'-2"	—
n <sub>400</sub> (E)	10	#5	7'-10"	—
n <sub>401</sub> (E)	94	#9	15'-1"	—
p <sub>400</sub> (E)	16	#10	49'-1"	—
p <sub>401</sub> (E)	32	#10	33'-0"	—
p <sub>402</sub> (E)	16	#10	21'-4"	—
s <sub>400</sub> (E)	59	#5	18'-2"	□
s <sub>401</sub> (E)	59	#5	17'-6"	□
s <sub>402</sub> (E)	68	#5	14'-1"	□
s <sub>403</sub> (E)	51	#5	4'-6"	—
s <sub>404</sub> (E)	148	#5	13'-3"	□
f <sub>400</sub> (E)	129	#8	13'-2"	—
u <sub>400</sub> (E)	28	#5	12'-3"	—
u <sub>401</sub> (E)	34	#5	11'-6"	—
u <sub>402</sub> (E)	25	#5	7'-4"	—
v <sub>400</sub> (E)	94	#9	16'-6"	—
v <sub>401</sub> (E)	5	#5	7'-1"	—
w <sub>400</sub> (E)	32	#8	31'-0"	—
w <sub>401</sub> (E)	32	#8	31'-5"	—
Test Pile Metal Shells	Each		1	
Structure Excavation	Cu Yd		315	
Concrete Structures	Cu Yd		230.8	
Reinforcement Bars, Epoxy Coated	Pound		34,850	
Furnishing Metal Shell Piles 12" x 0.25"	Foot		2,242	
Driving Piles	Foot		2,242	

RAMP 4 PIER DETAILS  
STRUCTURE NO. 016-0724

TYLIN INTERNATIONAL	DESIGNED - EKH	REVISIONS		SHEET NO. 222	F.A.I RTE. 55	SECTION 0711.2R & 1011.1BR	COUNTY COOK	TOTAL SHEETS 741	SHEET NO. 546
	CHECKED - AMD,	NAME	DATE						
	DRAWN - EKH								
	CHECKED - AMD,								
	DATE - 03/25/2011			239 SHEETS	CONTRACT NO. 60999				
FED. ROAD DIST. NO. 1 ILLINOIS FED. AID PROJECT									