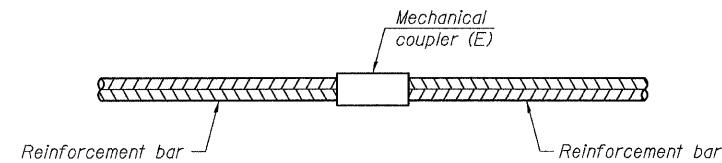
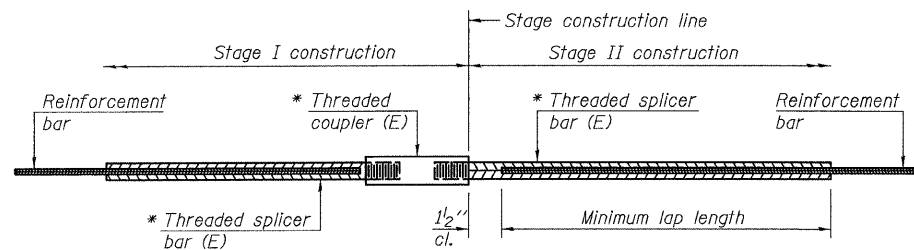


STATE OF ILLINOIS
DEPARTMENT OF TRANSPORTATION



STANDARD MECHANICAL SPLICER

Location	Bar size	No. assemblies required
Abutment 1C footing	#6	210
Abutment 4C footing	#6	98



STANDARD BAR SPLICER ASSEMBLY

Bar size to be spliced	Minimum Lap Lengths				
	Table 1	Table 2	Table 3	Table 4	Table 5
3, 4	1'-5"	1'-11"	2'-1"	2'-4"	2'-3"
5	1'-9"	2'-5"	2'-7"	2'-11"	2'-10"
6	2'-1"	2'-11"	3'-1"	3'-6"	3'-4"
7	2'-9"	3'-10"	4'-2"	4'-8"	4'-6"
8	3'-8"	5'-1"	5'-5"	6'-2"	5'-10"
9	4'-7"	6'-5"	6'-10"	7'-9"	7'-5"

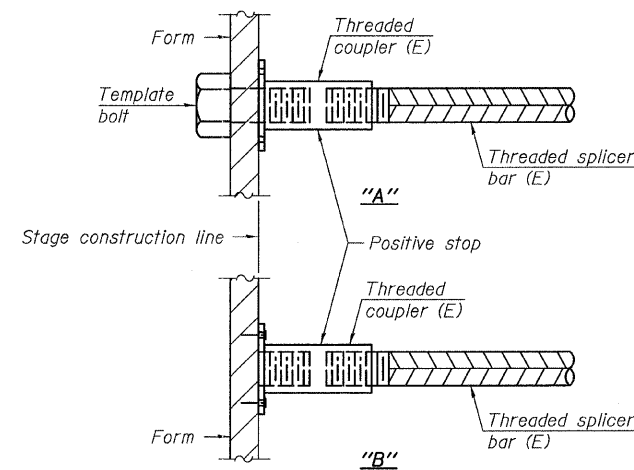
Table 1: Black bar, 0.8 Class C
Table 2: Black bar, Top bar lap, 0.8 Class C
Table 3: Epoxy bar, 0.8 Class C
Table 4: Epoxy bar, Top bar lap, 0.8 Class C
Table 5: Epoxy bar, Top bar lap, Class B

Threaded splicer bar length = min. lap length + 1/2" + thread length

* Epoxy not required on Bar Splicer Assembly components used in conjunction with black bars.

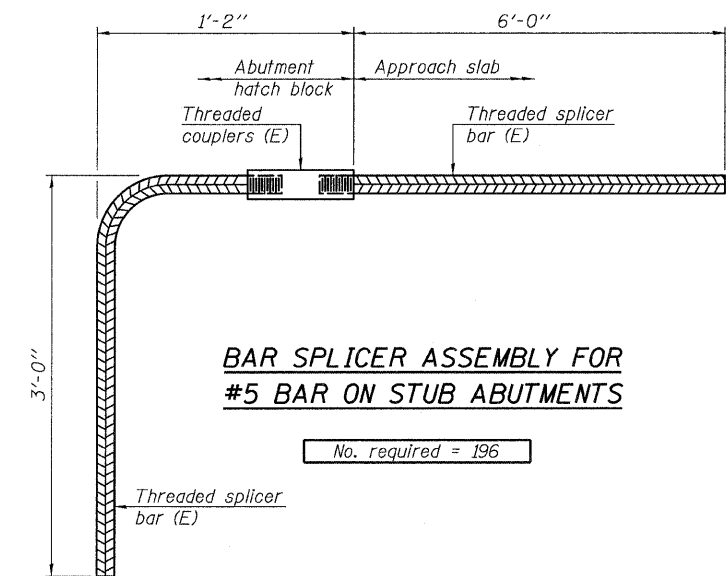
Location	Bar size	No. assemblies required	Table for minimum lap length
(1)	#5	493	4
(2)	#5	346	4
(3)	#5	959	4
(4)	#5	493	4
(5)	#5	346	4
(6)	#6	31	4
(7)	#6	31	4

- (1) Central Avenue bridge (West longitudinal joint) top
- (2) Central Avenue bridge (West longitudinal joint) bot.
- (3) Central Avenue bridge longitudinal joint (top & bot.)
- (4) Central Avenue bridge (East longitudinal joint) top
- (5) Central Avenue bridge (East longitudinal joint) bot.
- (6) Central Avenue bridge Abutment 2C footing
- (7) Central Avenue bridge Abutment 3C footing



INSTALLATION AND SETTING METHODS

"A": Set bar splicer assembly by means of a template bolt.
"B": Set bar splicer assembly by nailing to wood forms or cementing to steel forms.
(E): Indicates epoxy coating.



BAR SPLICER ASSEMBLY FOR #5 BAR ON STUB ABUTMENTS

No. required = 196

NOTES

1. Splicer bars shall be deformed with threaded ends and have a minimum 60 ksi yield strength.
2. All reinforcement shall be lapped and tied to the splicer bars.
3. Bar splicer assemblies shall be epoxy coated according to the requirements for reinforcement bars. See section 508 of the Standard Specifications.
4. See special provision for Mechanical Splicers.
5. See approved list of bar splicer assemblies and mechanical splicers for alternatives.

**BAR SPLICER ASSEMBLY AND MECHANICAL SPLICER DETAILS
CENTRAL AVENUE OVER I-55
STRUCTURE NO. 016-0724**

TYLIN INTERNATIONAL	DESIGNED - MB	REVISIONS		SHEET NO. 224	F.A.I RTE.	SECTION	COUNTY	TOTAL SHEETS	SHEET NO.	
	CHECKED - AMD,	NAME	DATE		55					0711.2R & 1011.1BR
	DRAWN - MB				239 SHEETS	CONTRACT NO. 60999				
	CHECKED - AMD,				DATE - 03/25/2011	FED. ROAD DIST. NO. 1	ILLINOIS	FED. AID PROJECT		

4:25:34 PM
p:\01345\structure\c2_central_ave_016-0724\155c2splicer.dgn
5/10/2011