

STATE OF ILLINOIS
DEPARTMENT OF TRANSPORTATION

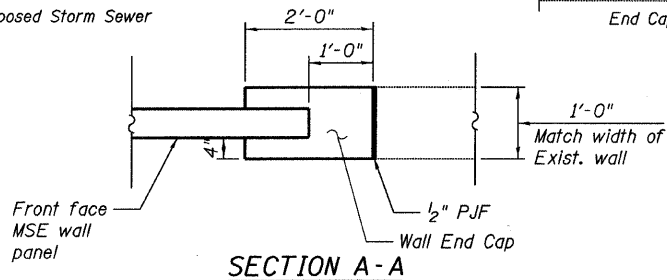
LEGEND

- Boring Location
- Removal of Existing Sub-Structures
- Proposed Catch Basin
- Proposed Manhole
- Existing Manhole
- Existing Catch Basin
- Existing Underdrain
- Existing Storm Sewer
- Proposed Underdrain
- Proposed Storm Sewer

BORING LOCATIONS

No.	Station	*Offset
RW-01	195+15.00	38.0 L
RW-02	195+74.00	38.0 L
RW-03	196+24.00	38.0 L
RW-04	196+76.00	38.5 L
RW-05	197+26.00	38.5 L

* Offset from PGL Ramp 1



SECTION A-A

Notes:

- Wall stations and offsets are given to the front face of the precast concrete wall panels, and are measured from the NB Ramps Baseline.
- For sections through Ramp and Abutment, refer to Sheet 2.
- Slipforming of the parapets is not allowed.
- Contractor Designed Ground Improvement: Bearing Capacity = 4700 psf Maximum Allowable Settlement = 0.4"
- For existing structure removal details see Sheet 335. Cost of removals is included with S.N. 016-0724
- Reinforcement bars shall conform to the requirements of ASTM A 706 Gr. 60.



Signed *Anna M. Dukes*
Anna M. Dukes, S.E. Il. Lic. No. 081-005598
Expires 11-30-2012

Date **March 25, 2011**

APPROVED
FOR STRUCTURAL ADEQUACY ONLY

Dr. Carl Perry
ENGINEER OF BRIDGES AND STRUCTURES

Bend in Wall
Sta. 195+15.88
Offset 26.25 RT
Elev. 614.85

Sta. 196+02.38
Elev. 617.44

Sta. 196+32.38
Elev. 618.34

Sta. 196+62.38
Elev. 619.16

Sta. 197+03.89
Elev. 620.17

Sta. 197+33.72
Offset 26.25 RT
Elev. 620.77

Top of exposed panel line
Elev. 612.16

Top of coping
PGL Ramp 1

Sta. 197+03.89
Elev. 620.87

Sta. 197+23.77
Offset 23.25 LT
Elev. 621.28

Sta. 196+62.38
Elev. 619.77

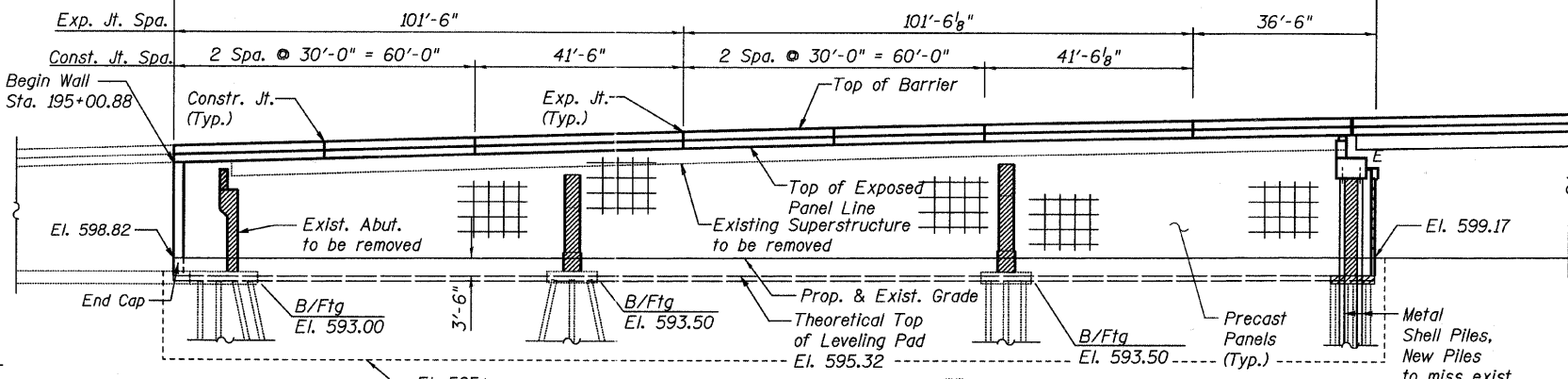
Sta. 196+32.38
Elev. 618.88

Sta. 196+02.38
Elev. 617.92

Sta. 195+15.88
Offset 23.25 LT
Elev. 615.32

Sta. 195+00.88
Offset 22.84 LT
Elev. 614.89

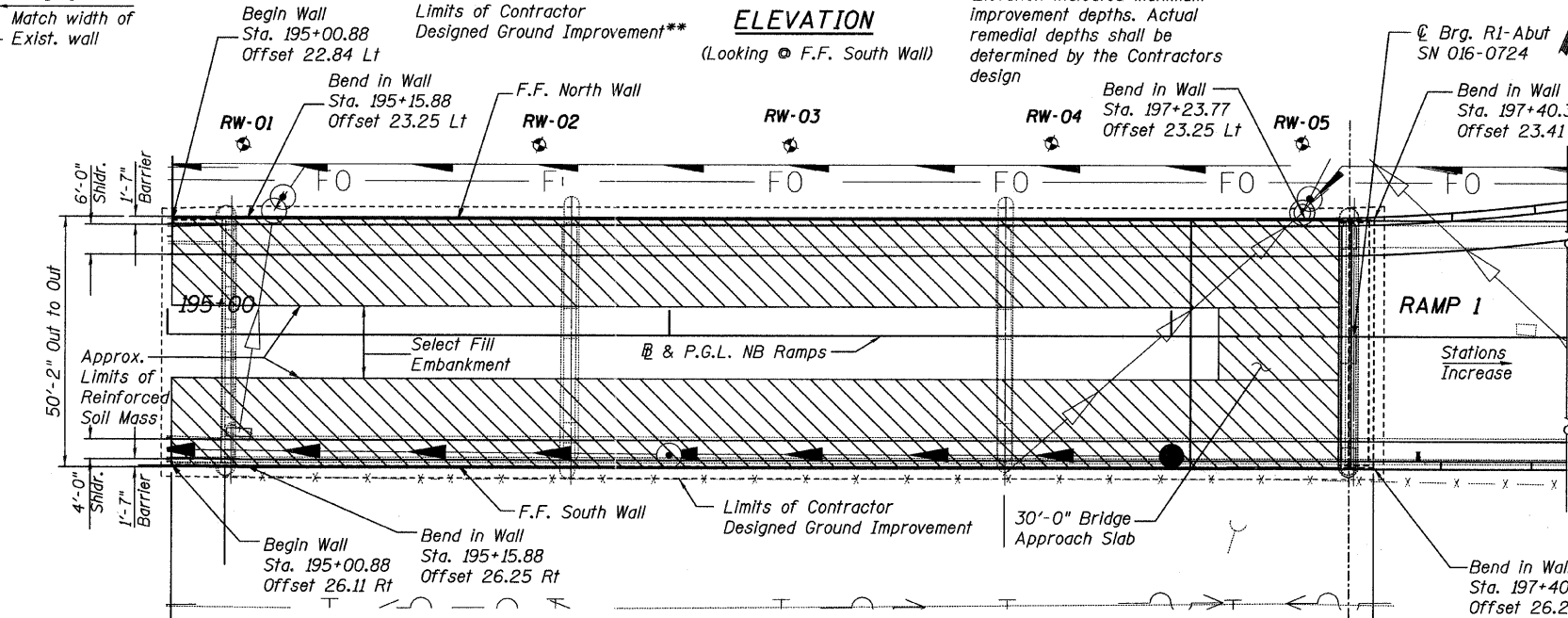
Exist. Ret. Wall SN 016-0724 239'-6 1/8" SN 016-0724



ELEVATION

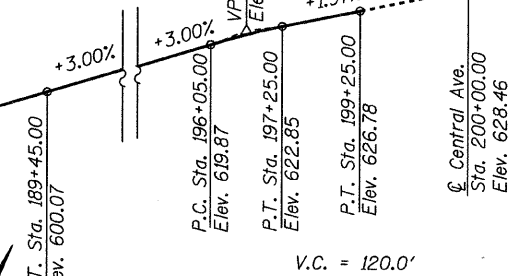
(Looking @ F.F. South Wall)

** Elevation indicates maximum improvement depths. Actual remedial depths shall be determined by the Contractors design



PLAN

RAMP 1 PROFILE GRADE



SCOPE OF WORK

- Spans 1 to 3
- Remove and replace the existing structure with Mechanically Stabilized Earth Retaining Walls.

TOTAL BILL OF MATERIALS

ITEM	UNIT	TOTAL
Structure Excavation	CU YD	1305
Concrete Structures	CU YD	2.9
Reinforcement Bars, Epoxy Coated	POUND	23,290
Mechanically Stabilized Earth Retaining Wall	SQ FT	11,796
Protective Coat	SQ YD	1661
Contractor Designed Ground Improvement	L SUM	0.25
Concrete Superstructure	CU YD	183.8

INDEX OF SHEETS

- General Plan And Elevation - Ramp 1 Retaining Wall
- Ramp 1 MSE Abutment Wall Sections
- Ramp 1 MSE Abutment Wall & End Cap Details
- Ramp 1 Moment Slab Plan & Elevation 1 of 2
- Ramp 1 Moment Slab Plan & Elevation 2 of 2
- Ramp 1 Moment Slab Sections & Bar List
- Ramp 1 Moment Slab Details
- Boring Logs 1
- Boring Logs 2
- Boring Logs 3

GENERAL PLAN AND ELEVATION
RAMP 1 RETAINING WALL
CENTRAL AVE. OVER I-55
COOK COUNTY
STATION 195+00.88 TO 197+40.39
STRUCTURE NO. 016-1304

TYLIN INTERNATIONAL

DESIGNED	CHKD	DATE
EKH	AMD,MMB	03/25/2011

REVISIONS	
NAME	DATE

SHEET NO. 1	F.A.I. RTE. 55	SECTION 0711.2R & 1011.1BR	COUNTY COOK	TOTAL SHEETS 741	SHEET NO. 564
10 SHEETS	CONTRACT NO. 60999				
FED. ROAD DIST. NO. 1 ILLINOIS FED. AID PROJECT					

5/18/14 PM 0101345\structure\02_Central Ave. 016-0724\1551-rmsaepaden