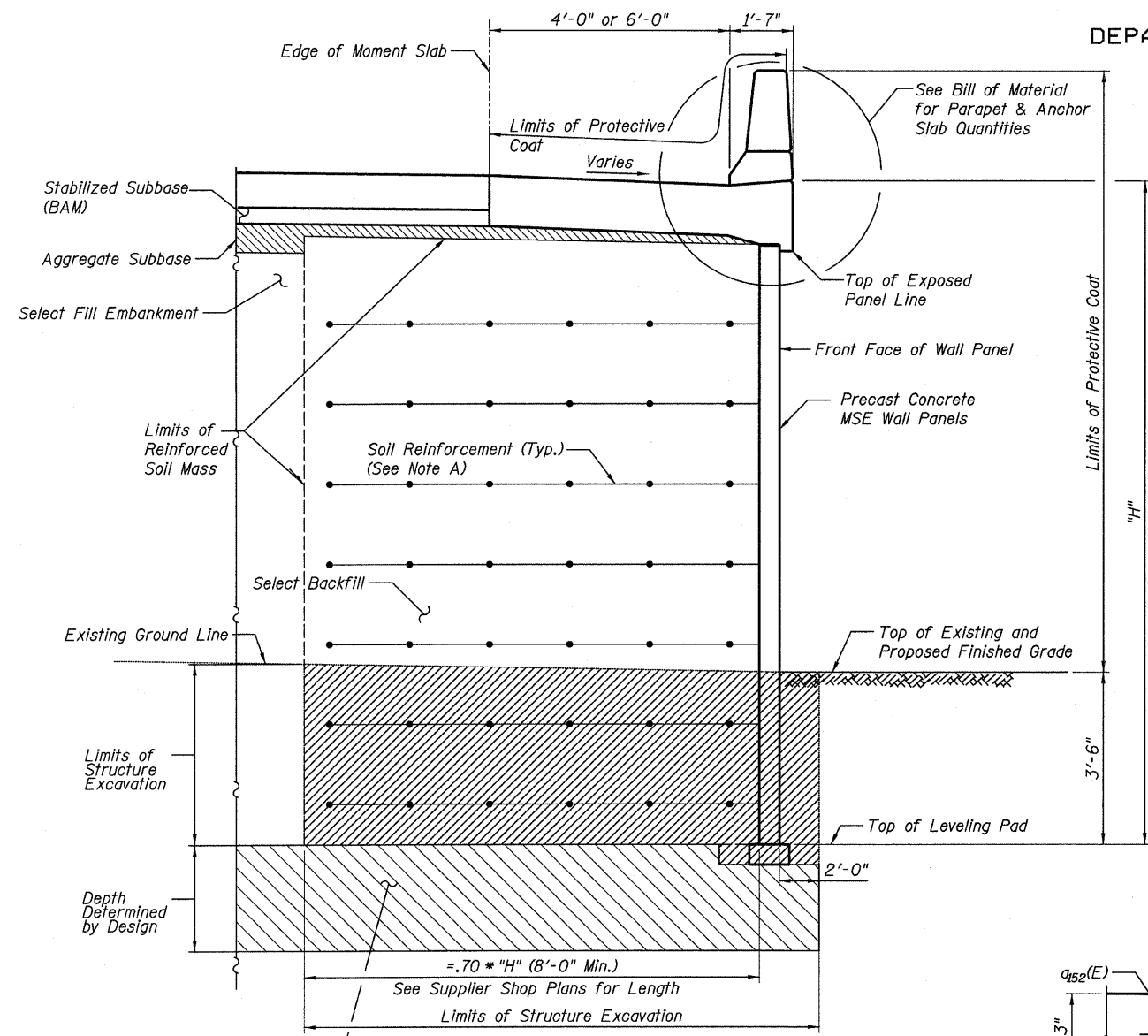
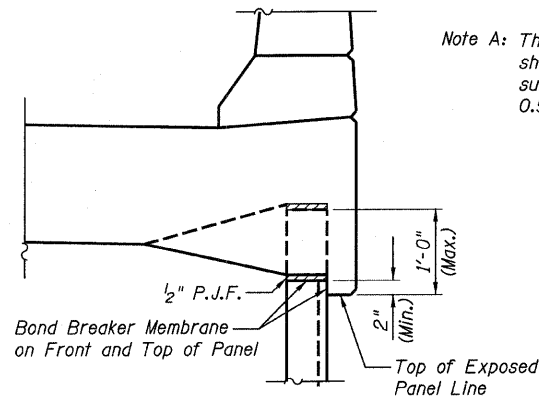


STATE OF ILLINOIS  
DEPARTMENT OF TRANSPORTATION

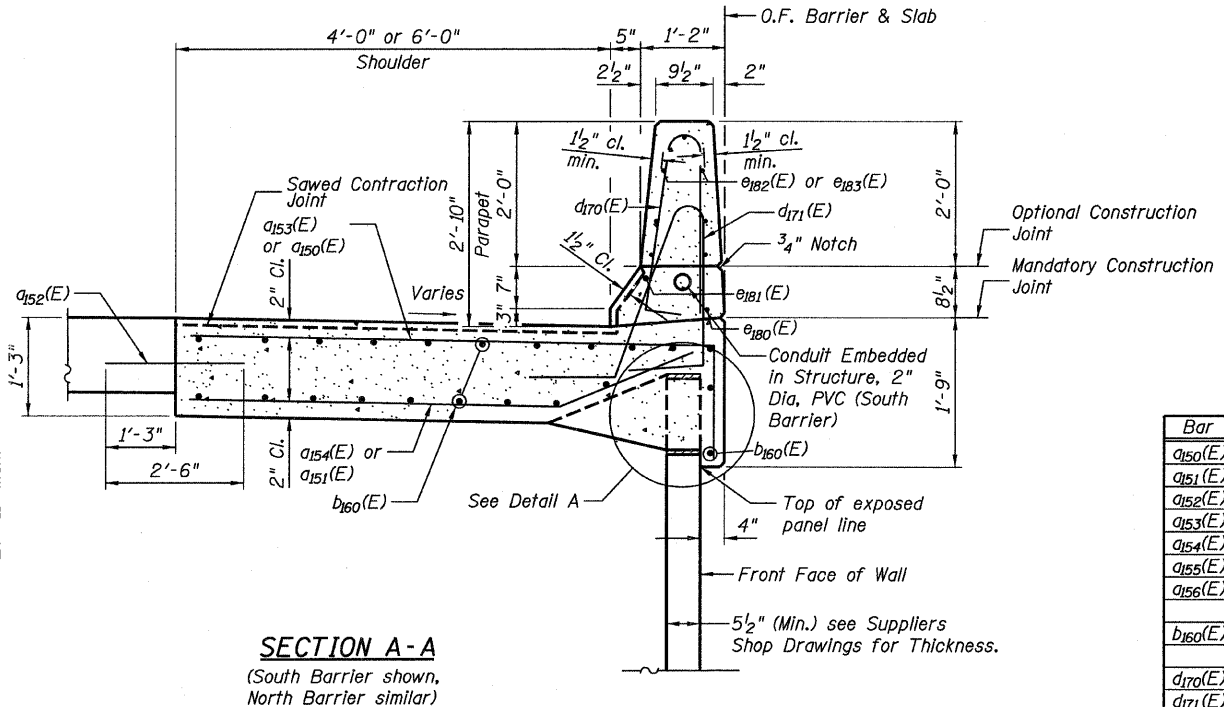


**TYPICAL CROSS SECTION**

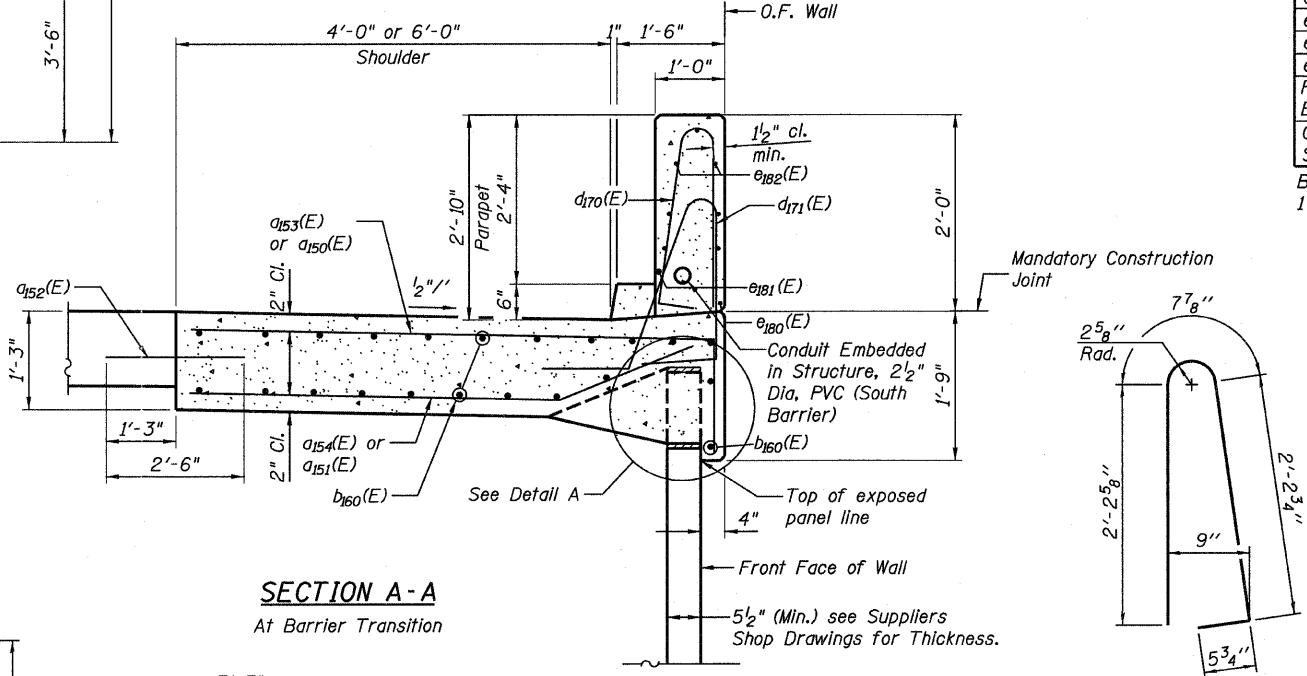
Note A: The M.S.E. Wall Suppliers internal stability design shall account for the anchorage slab's bearing pressure surcharge of 1.0 ksf and a horizontal sliding force of 0.5 k/ft of wall.



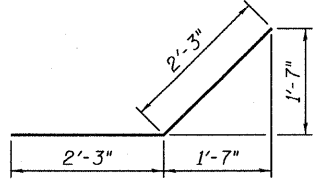
**DETAIL A**



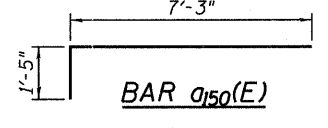
**SECTION A-A**  
(South Barrier shown, North Barrier similar)



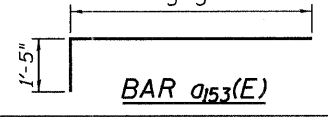
**SECTION A-A**  
At Barrier Transition



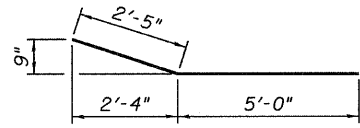
**BAR a156(E)**



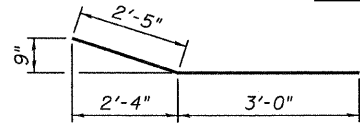
**BAR a150(E)**



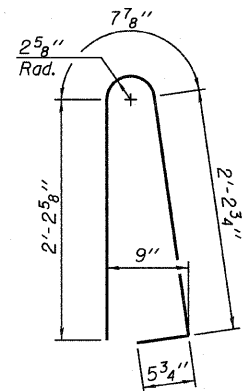
**BAR a153(E)**



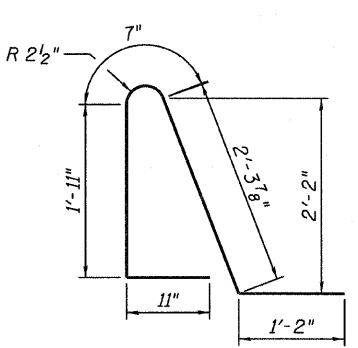
**BAR a151(E)**



**BAR a154(E)**



**BAR d170(E)**



**BAR d171(E)**

**RAMP 1 MOMENT SLAB SECTIONS AND BAR LIST**  
STRUCTURE NO. 016-1304

Note:  
1. See electrical drawings for conduit details and payment information.  
2. In Typical Cross Section, See Roadway plans for payment of Stabilized Subbase, Aggregate Subbase and Embankment.

**BILL OF MATERIAL**

Bar	No.	Size	Length	Shape
a150(E)	203	#6	8'-8"	—
a151(E)	203	#6	7'-5"	—
a152(E)	406	#6	2'-6"	—
a153(E)	203	#6	6'-8"	—
a154(E)	203	#6	5'-5"	—
a155(E)	40	#6	5'-6"	—
a156(E)	8	#6	4'-6"	—
b160(E)	140	#4	31'-2"	—
d170(E)	444	#5	5'-7"	U
d171(E)	444	#5	6'-11"	U
e180(E)	16	#4	27'-3"	—
e181(E)	16	#8	30'-4"	—
e182(E)	168	#4	14'-8"	—
e183(E)	28	#4	11'-2"	—
Reinforcement Bars, Epoxy Coated		Pound	22,650	
Concrete Superstructure		Cu. Yds.	183.8	

Bars indicated thus 1 x 15-#5 etc. indicates 1 line of bars with 15 lengths per line.

**TYLIN INTERNATIONAL**

DESIGNED	EKH	REVISIONS	
CHECKED	AMD,MMB	NAME	DATE
DRAWN	EKH		
CHECKED	AMD,MMB		
DATE	03/25/2011		

SHEET NO.	F.A.I. RTE.	SECTION	COUNTY	TOTAL SHEETS	SHEET NO.
6	55	0711.2R & 1011.1BR	COOK	741	569
10 SHEETS					
CONTRACT NO. 60999					
FED. ROAD DIST. NO. 1   ILLINOIS   FED. AID PROJECT					

4/28/2011 2:13:55 PM p:\01345\structure\2 Central Ave. 016-0724\155-1\inc\mlab3.dgn