

TOTAL BILL OF MATERIALS

ITEM	UNIT	TOTAL
Structure Excavation	CU YD	1391
Concrete Superstructure	CU YD	183.8
Reinforcement Bars, Epoxy Coated	POUND	23,390
Mechanically Stabilized Earth Retaining Wall	SQ FT	12,749
Protective Coat	SQ YD	1749
Contractor Designed Ground Improvement	L SUM	0.25
Concrete Structures	CU YD	3.1

INDEX OF SHEETS

1. General Plan And Elevation - Ramp 2 Retaining Wall
2. Ramp 2 MSE Abutment Wall Sections
3. Ramp 2 MSE Abutment Wall & End Cap Details
4. Ramp 2 Moment Slab Plan & Elevation 1 of 2
5. Ramp 2 Moment Slab Plan & Elevation 2 of 2
6. Ramp 2 Moment Slab Sections & Bar List
7. Ramp 2 Moment Slab Details
8. Boring Logs 1
9. Boring Logs 2
10. Boring Logs 3

Notes:

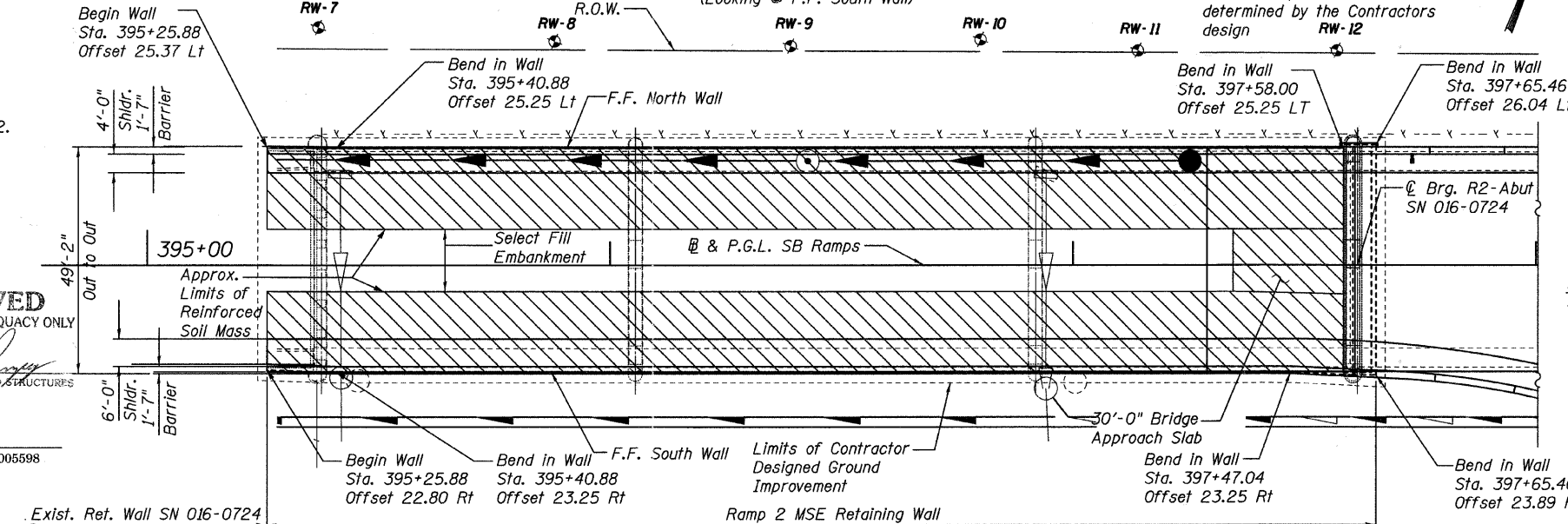
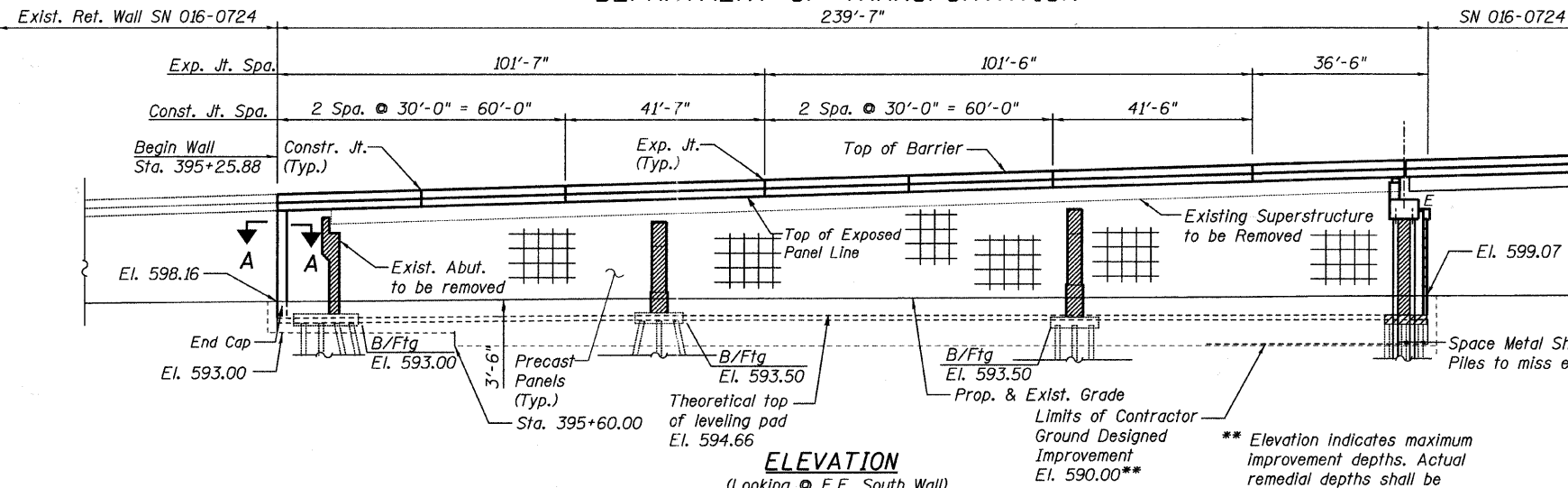
1. Wall stations and offsets are given to the front face of the precast concrete wall panels, and are measured from the SB Ramps Baseline.
2. For sections thru Ramp and Abutment, refer to Sheet 2.
3. For existing structure removal details see Sheet 335. Cost of removals is included with S.N. 016-0724.
4. Contractor Designed Ground Improvement: Bearing Capacity = 4500 psf
Maximum Allowable Settlement = 0.4"
5. For Section A-A see Sheet 3.
6. Slipforming of the parapets is not allowed.
7. Reinforcement bars shall conform to the requirements of ASTM A706 Gr. 60.

APPROVED
FOR STRUCTURAL ADEQUACY ONLY
Anna M. Dukes
ENGINEER OF BRIDGES AND STRUCTURES

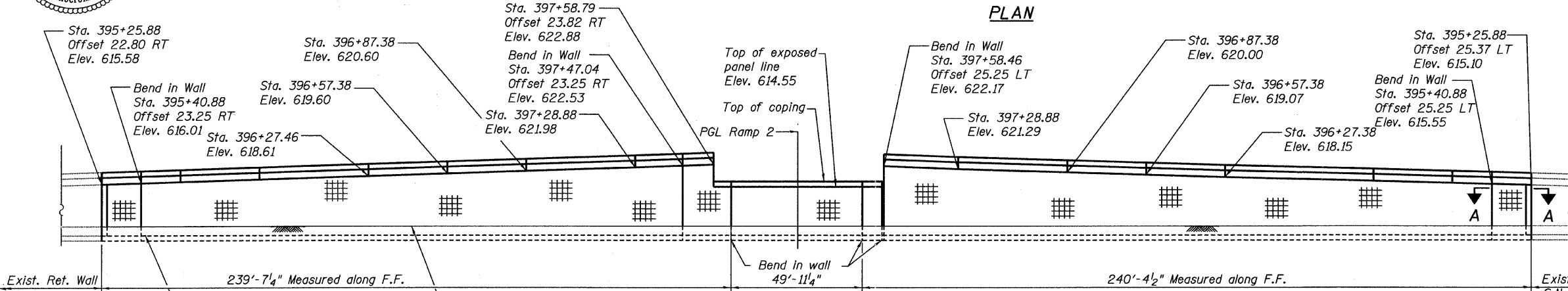


Signed *Anna M. Dukes*
Anna M. Dukes, S.E. II, Lic. No. 081-005598
Expires 11-30-2012.
Date March 25, 2011

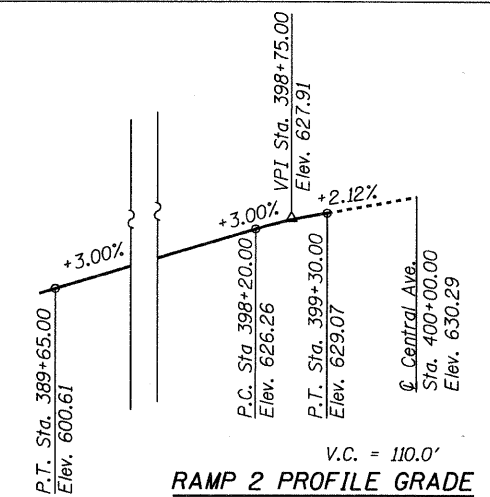
STATE OF ILLINOIS
DEPARTMENT OF TRANSPORTATION



PLAN



RAMP 2 WALL ELEVATION
Developed elevation along front face



SCOPE OF WORK
Spans 1 to 3

- Remove and replace the existing structure with Mechanically Stabilized Earth Retaining Walls.

BORING LOCATIONS

No.	Station	*Offset
RW-07	395+37.00	51.5 L
RW-08	395+88.00	48.5 L
RW-09	396+39.00	47.5 L
RW-10	396+80.00	48.9 L
RW-11	397+14.00	46.5 L
RW-12	397+57.00	46.5 L

* Offset from PGL Ramp 2

LEGEND

- Boring Location
- Proposed Catch Basin
- Proposed Manhole
- Existing Catch Basin
- Existing Underdrain
- Existing Storm Sewer
- ▨ Removal of Existing Sub-Structures
- Proposed Underdrain
- Proposed Storm Sewer

GENERAL PLAN AND ELEVATION
RAMP 2 RETAINING WALL
CENTRAL AVE. OVER I-55
COOK COUNTY
STATION 395+25.88 TO 397+65.46
STRUCTURE NO. 016-1305

TYLIN INTERNATIONAL	DESIGNED - EKH	REVISIONS		SHEET NO. 1	F.A.I. RTE. 55	SECTION 0711.2R & 1011.1BR	COUNTY COOK	TOTAL SHEETS	SHEET NO.
	CHECKED - AMD, MMB	NAME	DATE					741	574
	DRAWN - EKH							CONTRACT NO. 60999	
	CHECKED - AMD, MMB							FED. ROAD DIST. NO. 1 ILLINOIS FED. AID PROJECT	
	DATE - 03/25/2011								

5/10/2011 5:18:46 PM