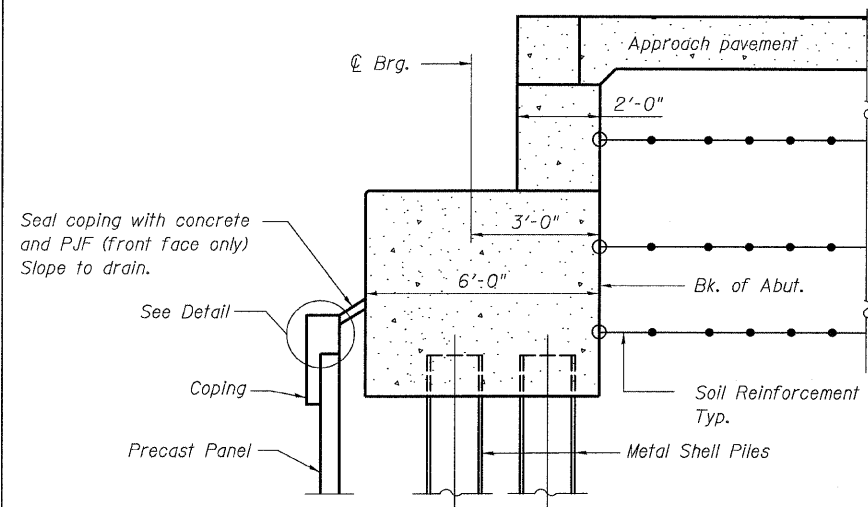
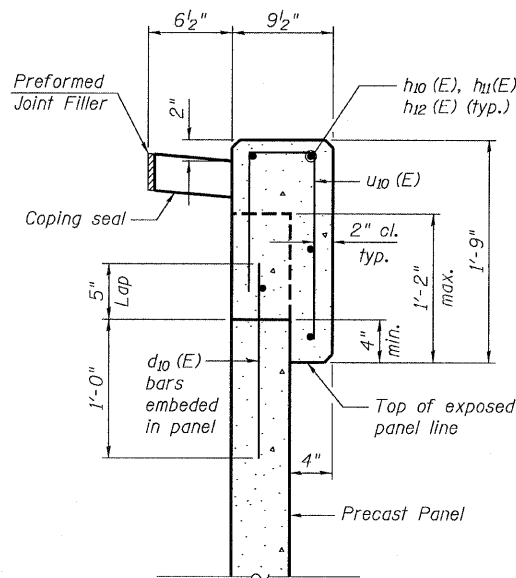


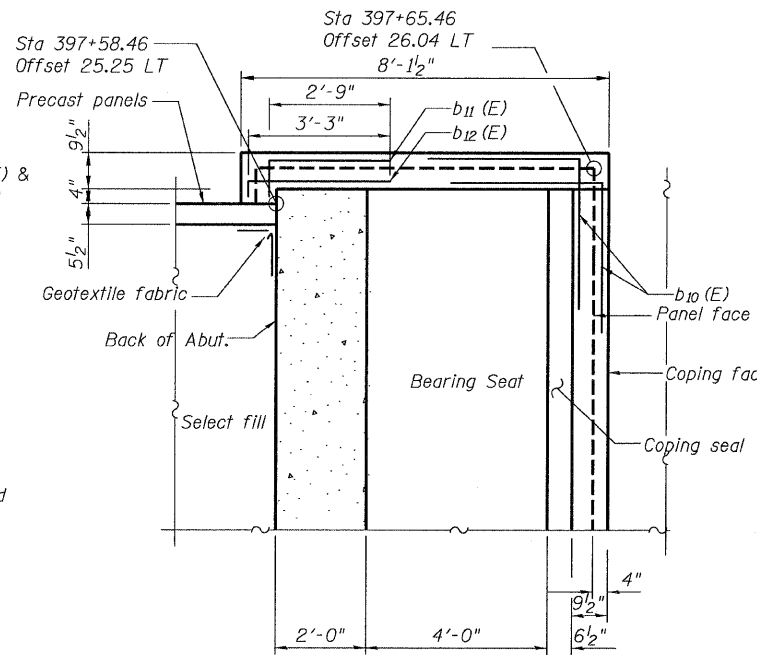
STATE OF ILLINOIS  
DEPARTMENT OF TRANSPORTATION



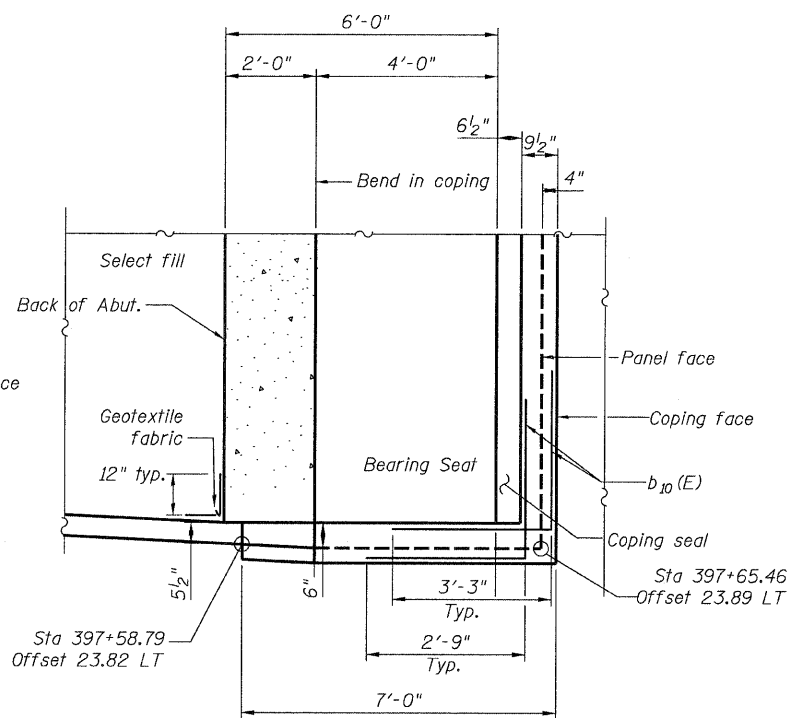
**SECTION THRU ABUTMENT**  
(Horiz. dim. @ Rt. L's)



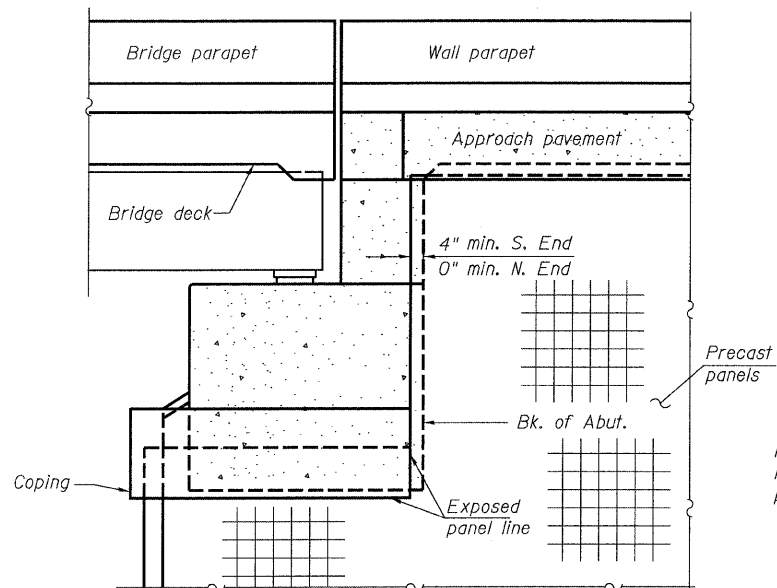
**DETAIL**



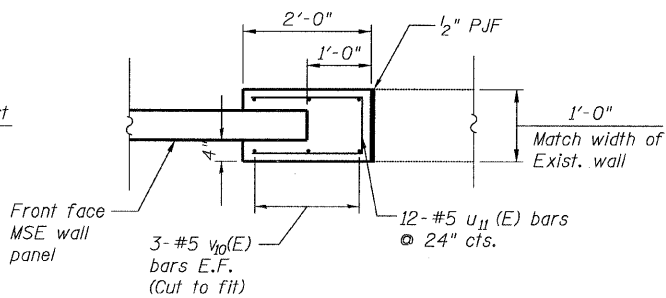
**PLAN AT ABUT. - N. END**



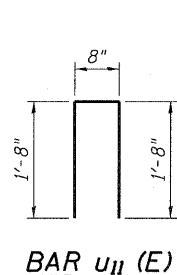
**PLAN AT ABUT. - S. END**



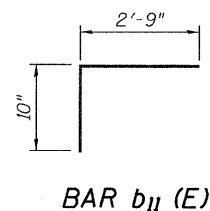
**END VIEW**



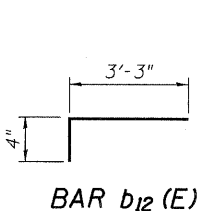
**SECTION A-A  
WALL END CAP DETAIL**



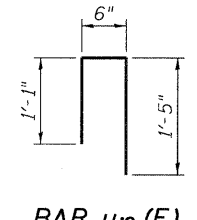
**BAR u<sub>11</sub>(E)**



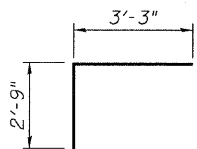
**BAR b<sub>11</sub>(E)**



**BAR b<sub>12</sub>(E)**



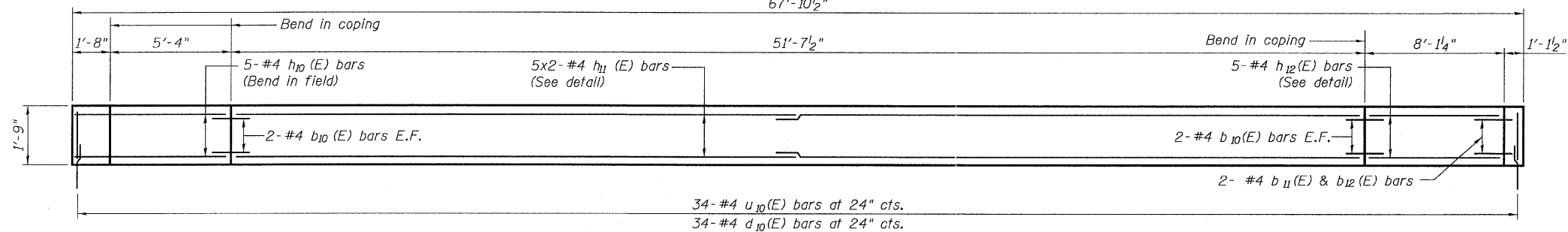
**BAR u<sub>10</sub>(E)**



**BAR b<sub>10</sub>(E)**

**BILL OF MATERIAL**

| Bar                              | No. | Size | Length  | Shape |
|----------------------------------|-----|------|---------|-------|
| d <sub>10</sub> (E)              | 34  | #4   | 1'-5"   | —     |
| b <sub>10</sub> (E)              | 4   | #8   | 6'-0"   | ┌     |
| b <sub>11</sub> (E)              | 2   | #4   | 3'-7"   | ┌     |
| b <sub>12</sub> (E)              | 2   | #4   | 3'-7"   | ┌     |
| h <sub>10</sub> (E)              | 5   | #4   | 6'-8"   | —     |
| h <sub>11</sub> (E)              | 10  | #4   | 26'-11" | —     |
| h <sub>12</sub> (E)              | 5   | #4   | 7'-9"   | —     |
| u <sub>10</sub> (E)              | 34  | #4   | 3'-0"   | ┌     |
| u <sub>11</sub> (E)              | 24  | #5   | 4'-0"   | ┌     |
| v <sub>10</sub> (E)              | 12  | #5   | 20'-7"  | —     |
| Concrete Structures              |     |      | Cu. Yd. | 3.1   |
| Reinforcement Bars, Epoxy Coated |     |      | Pound   | 740   |



**COPING ELEVATION**

**MINIMUM BAR LAP**

#4 bar - 2'-7"

**RAMP 2 MSE ABUTMENT WALL  
& END CAP DETAILS  
STRUCTURE NO. 016-1305**

|                            |                    |           |      |             |   |                    |        |              |           |  |
|----------------------------|--------------------|-----------|------|-------------|---|--------------------|--------|--------------|-----------|--|
| <b>TYLIN INTERNATIONAL</b> | DESIGNED - JMA     | REVISIONS |      | SHEET NO. 3 | F.A.I. RTE.                                     | SECTION            | COUNTY | TOTAL SHEETS | SHEET NO. |  |
|                            | CHECKED - AMD, MMB | NAME      | DATE |             | 55  | 0711.2R & 1011.1BR | COOK   | 741          | 576       |  |
|                            | DRAWN - JMA        |           |      |             | 10 SHEETS                                       | CONTRACT NO. 60999 |        |              |           |  |
|                            | CHECKED - AMD, MMB |           |      |             | FED. ROAD DIST. NO. 1 ILLINOIS FED. AID PROJECT |                    |        |              |           |  |
|                            | DATE - 03/25/2011  |           |      |             |   |                    |        |              |           |  |

4/28/2011 1:29:35 PM p:\01345\structur\02 Central Ave. 016-072\155-2\sect1.dgn