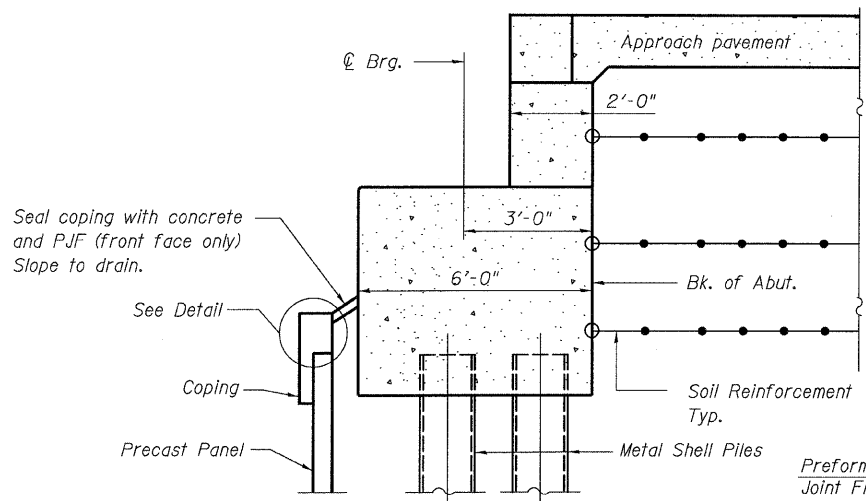
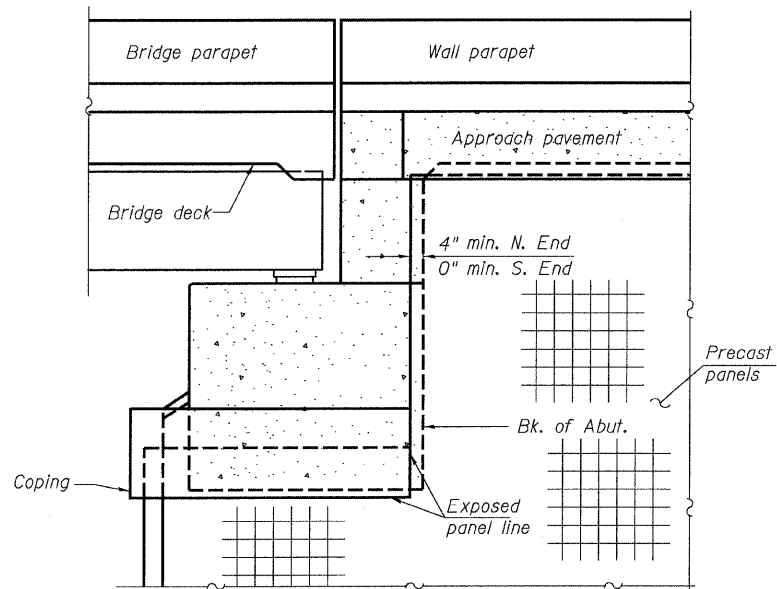


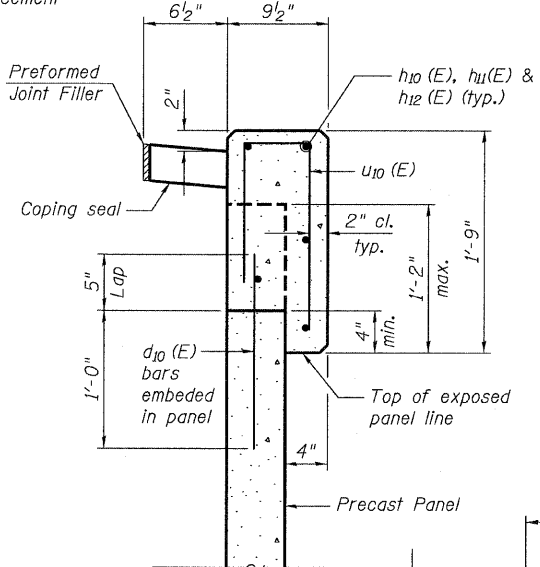
STATE OF ILLINOIS
DEPARTMENT OF TRANSPORTATION



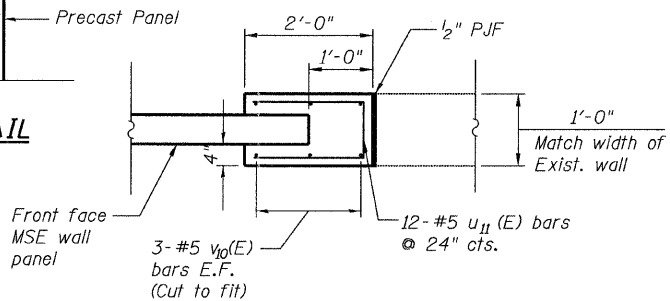
SECTION THRU ABUTMENT
(Horiz. dim. @ Rt. L's)



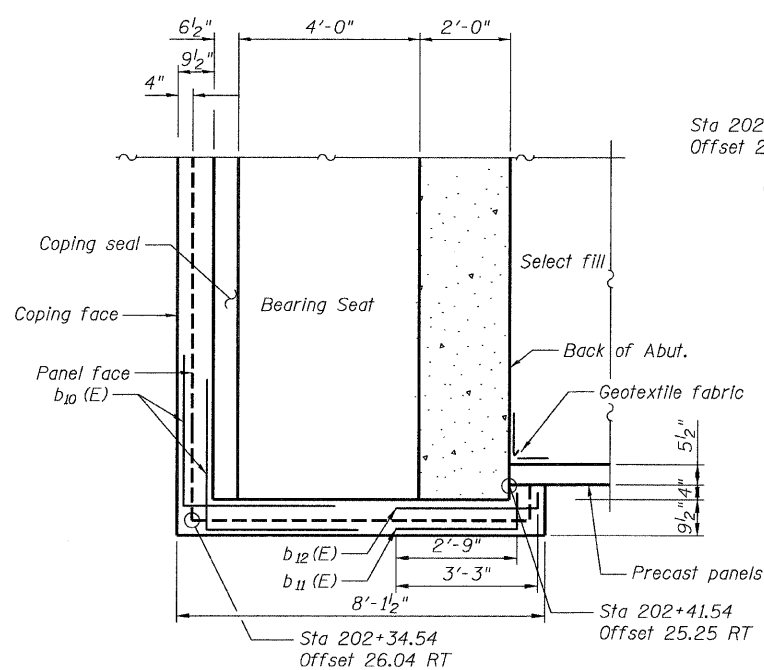
END VIEW



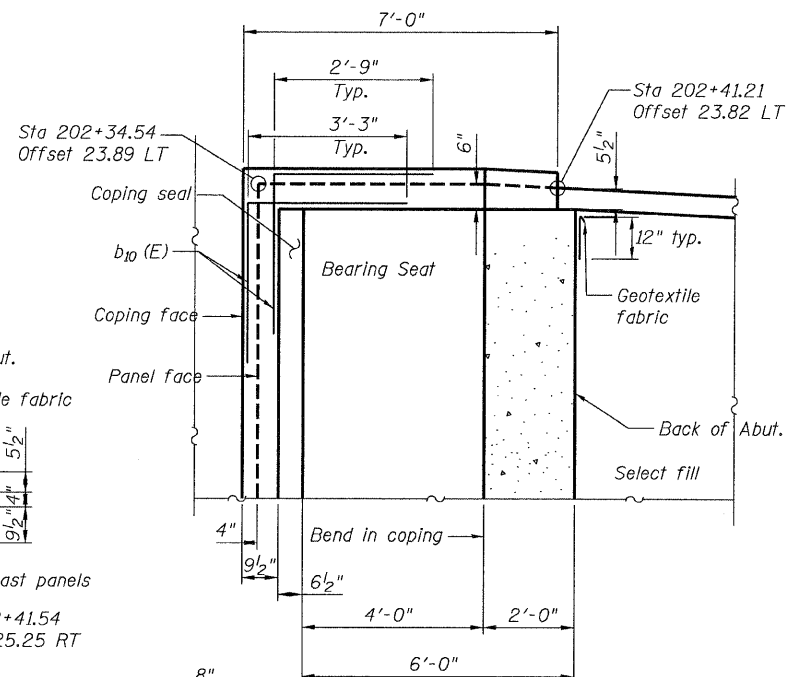
DETAIL



**SECTION A-A
WALL END CAP DETAIL**

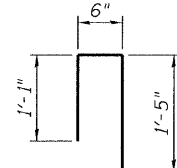


PLAN AT ABUT. - S. END

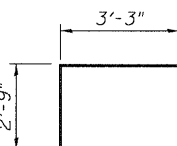


PLAN AT ABUT. - N. END

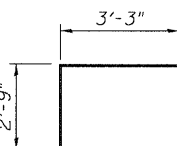
BAR u11 (E)



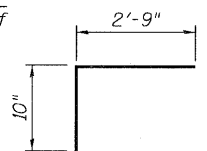
BAR u10 (E)



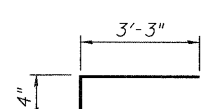
BAR b10 (E)



BAR b11 (E)



BAR b12 (E)



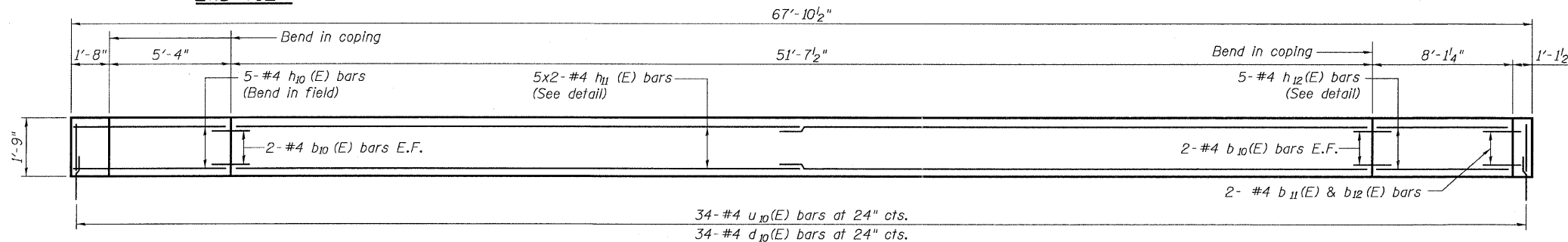
BILL OF MATERIAL

| Bar | No. | Size | Length | Shape |
|----------------------------------|-----|------|---------|-------|
| d10 (E) | 34 | #4 | 1'-5" | — |
| b10 (E) | 8 | #4 | 6'-0" | ┌┐ |
| b11 (E) | 2 | #4 | 3'-7" | ┌┐ |
| b12 (E) | 2 | #4 | 3'-7" | ┌┐ |
| h10 (E) | 5 | #4 | 6'-8" | — |
| h11 (E) | 10 | #4 | 26'-11" | — |
| h12 (E) | 5 | #4 | 7'-9" | — |
| u10 (E) | 34 | #4 | 3'-0" | ┌┐ |
| u11 (E) | 24 | #5 | 4'-0" | ┌┐ |
| v10 (E) | 12 | #5 | 21'-0" | — |
| Concrete Structures | | | Cu. Yd. | 3.1 |
| Reinforcement Bars, Epoxy Coated | | | Pound | 740 |

**RAMP 3 MSE ABUTMENT WALL
& END CAP DETAILS
STRUCTURE NO. 016-1306**

MINIMUM BAR LAP
#4 bar - 2'-7"

COPING ELEVATION



TYLIN INTERNATIONAL

| DESIGNED | JMA | REVISIONS | |
|----------|------------|-----------|------|
| CHECKED | AMD, MMB | NAME | DATE |
| DRAWN | JMA | | |
| CHECKED | AMD, MMB | | |
| DATE | 03/25/2011 | | |

| | | | | | |
|-------------|-------------------------------------------------|--------------------|--------|--------------|-----------|
| SHEET NO. 3 | F.A.I. RTE. | SECTION | COUNTY | TOTAL SHEETS | SHEET NO. |
| | 55 | 0711.2R & 1011.1BR | COOK | 741 | 586 |
| 9 SHEETS | CONTRACT NO. 60999 | | | | |
| | FED. ROAD DIST. NO. 1 ILLINOIS FED. AID PROJECT | | | | |

4/28/2011 1:29:46 PM p:\01345\structure\02 Central Ave. 016-0724\155-3msedtl.dwg