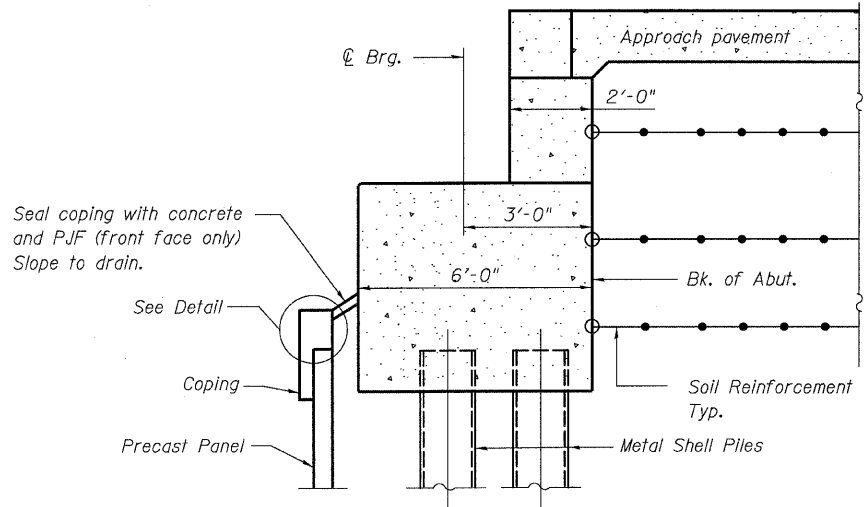
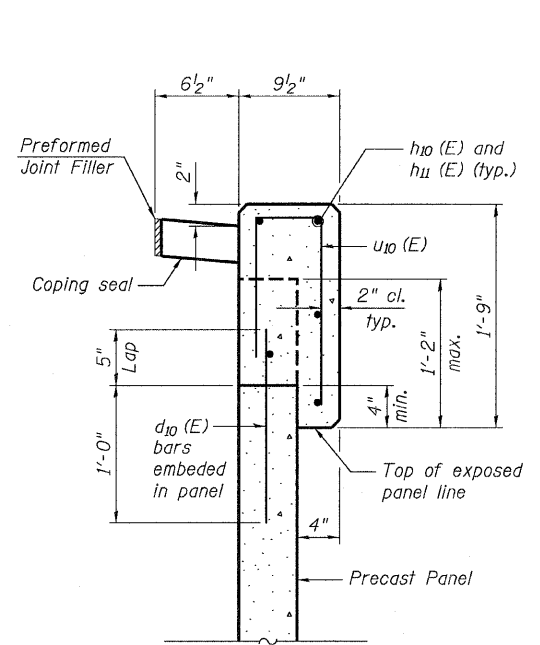


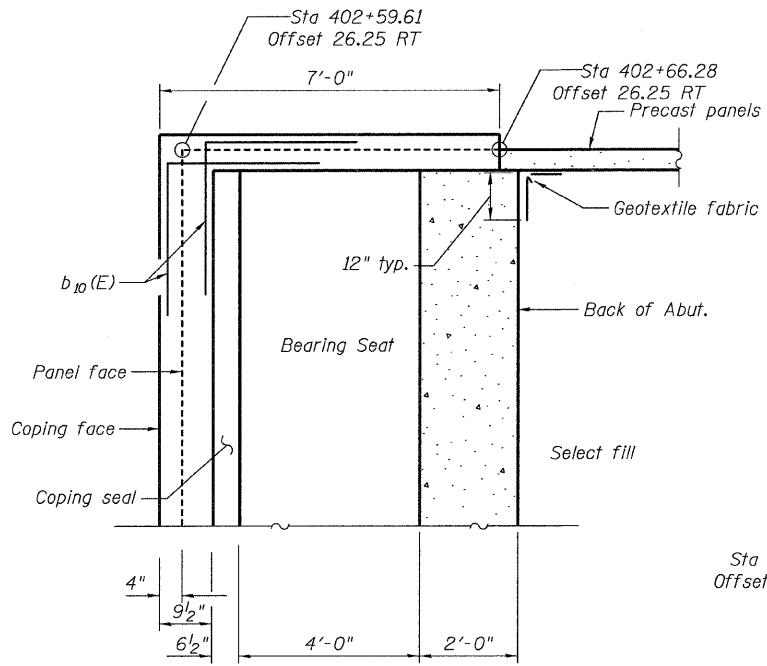
STATE OF ILLINOIS
DEPARTMENT OF TRANSPORTATION



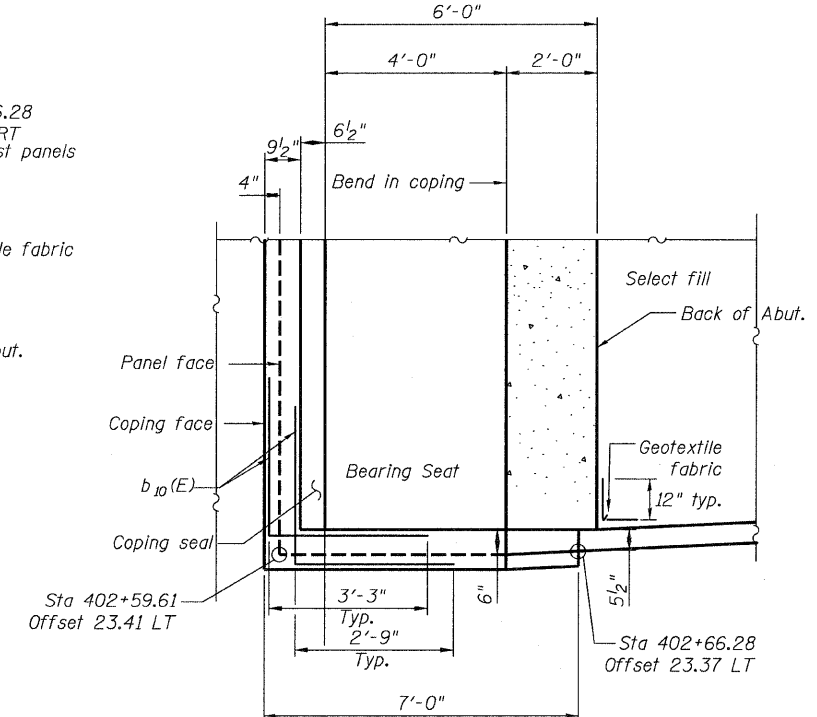
SECTION THRU ABUTMENT
(Horiz. dim. @ Rt. L's)



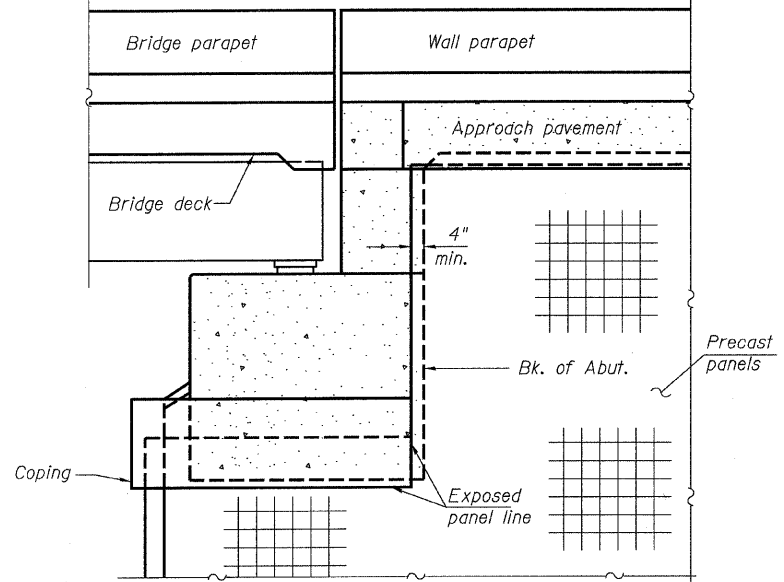
DETAIL



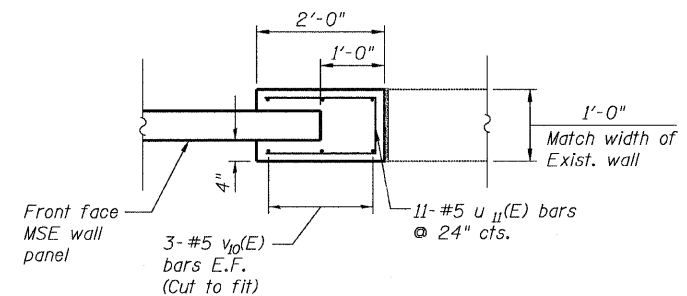
PLAN AT ABUT. - N. END



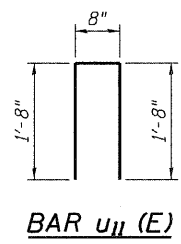
PLAN AT ABUT. - S. END



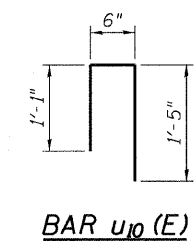
END VIEW



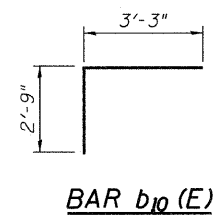
**SECTION A-A
WALL END CAP DETAIL**



BAR u11 (E)



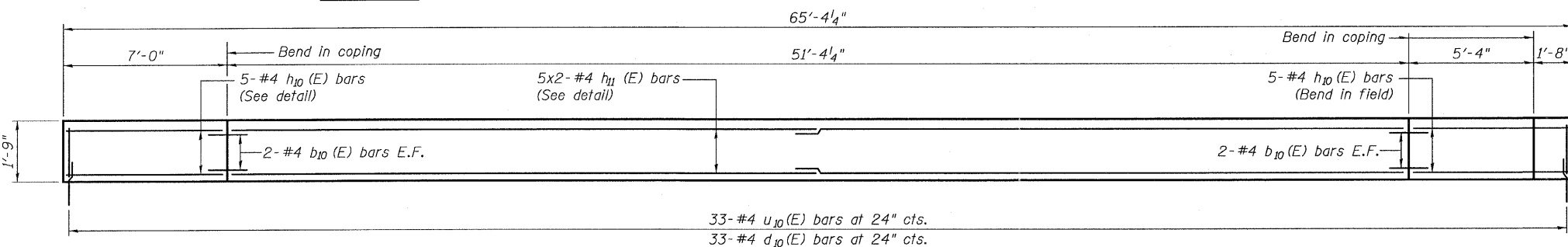
BAR u10 (E)



BAR b10 (E)

BILL OF MATERIAL

Bar	No.	Size	Length	Shape
d10 (E)	33	#4	1'-5"	—
b10 (E)	8	#4	6'-0"	┌
h10 (E)	10	#4	6'-8"	—
h11 (E)	10	#4	26'-10"	—
u10 (E)	33	#4	3'-0"	┌
u11 (E)	22	#5	4'-0"	┌
v10 (E)	12	#5	20'-5"	—
Concrete Structures			Cu. Yd.	2.9
Reinforcement Bars, Epoxy Coated			Pound	660



COPING ELEVATION

MINIMUM BAR LAP
#4 bar - 2'-7"

**RAMP 4 MSE ABUTMENT WALL
& END CAP DETAILS
STRUCTURE NO. 016-1307**

TYLIN INTERNATIONAL	DESIGNED - JMA	REVISIONS		SHEET NO. 3	F.A.I. RTE.	SECTION	COUNTY	TOTAL SHEETS	SHEET NO.	
	CHECKED - AMD, MMB	NAME	DATE		55	0711.2R & 1011.1BR	COOK	741	595	
	DRAWN - JMA				CONTRACT NO. 60999					
	CHECKED - AMD, MMB				FED. ROAD DIST. NO. 1 ILLINOIS FED. AID PROJECT					
	DATE - 03/25/2011				11 SHEETS					

4/28/2011 1:29:57 PM p:\01345\structure\2 Central Ave. 016-072\155-4\sect1.dgn