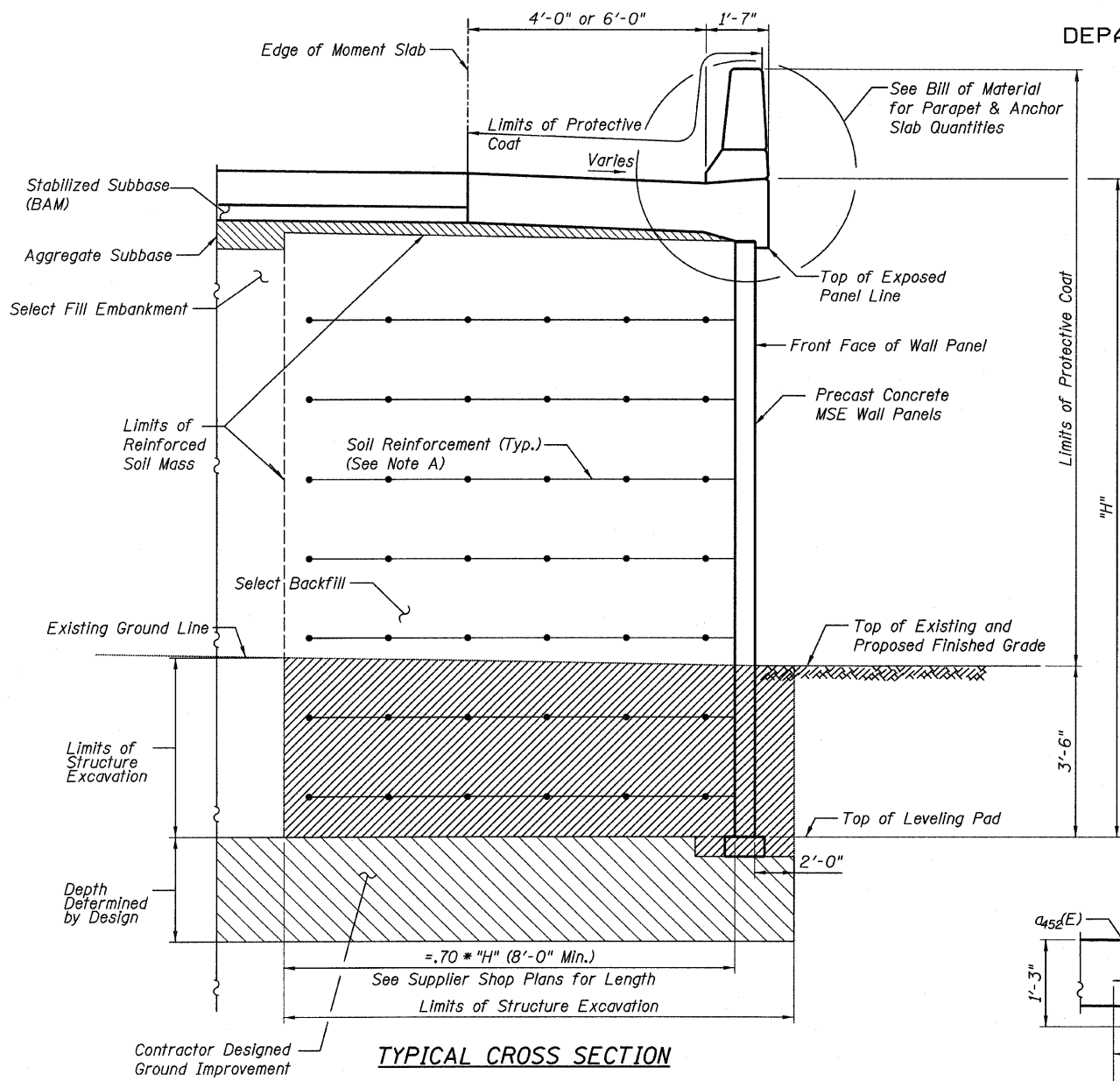
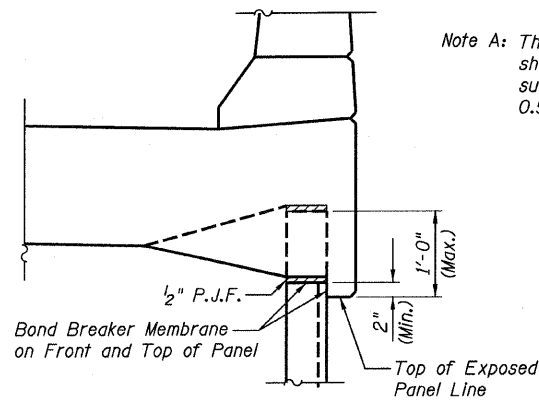


STATE OF ILLINOIS  
DEPARTMENT OF TRANSPORTATION

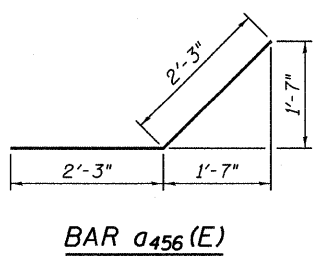


TYPICAL CROSS SECTION

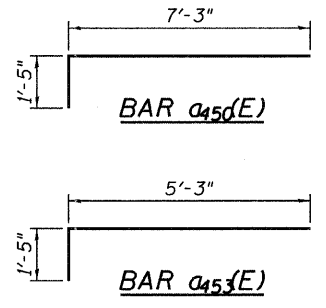
Note A: The M.S.E. Wall Suppliers internal stability design shall account for the anchorage slab's bearing pressure surcharge of 1.0 ksf and a horizontal sliding force of 0.5 k/ft of wall.



DETAIL A

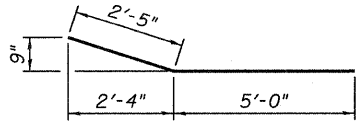


BAR a456(E)

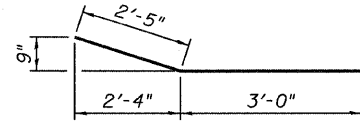


BAR a453(E)

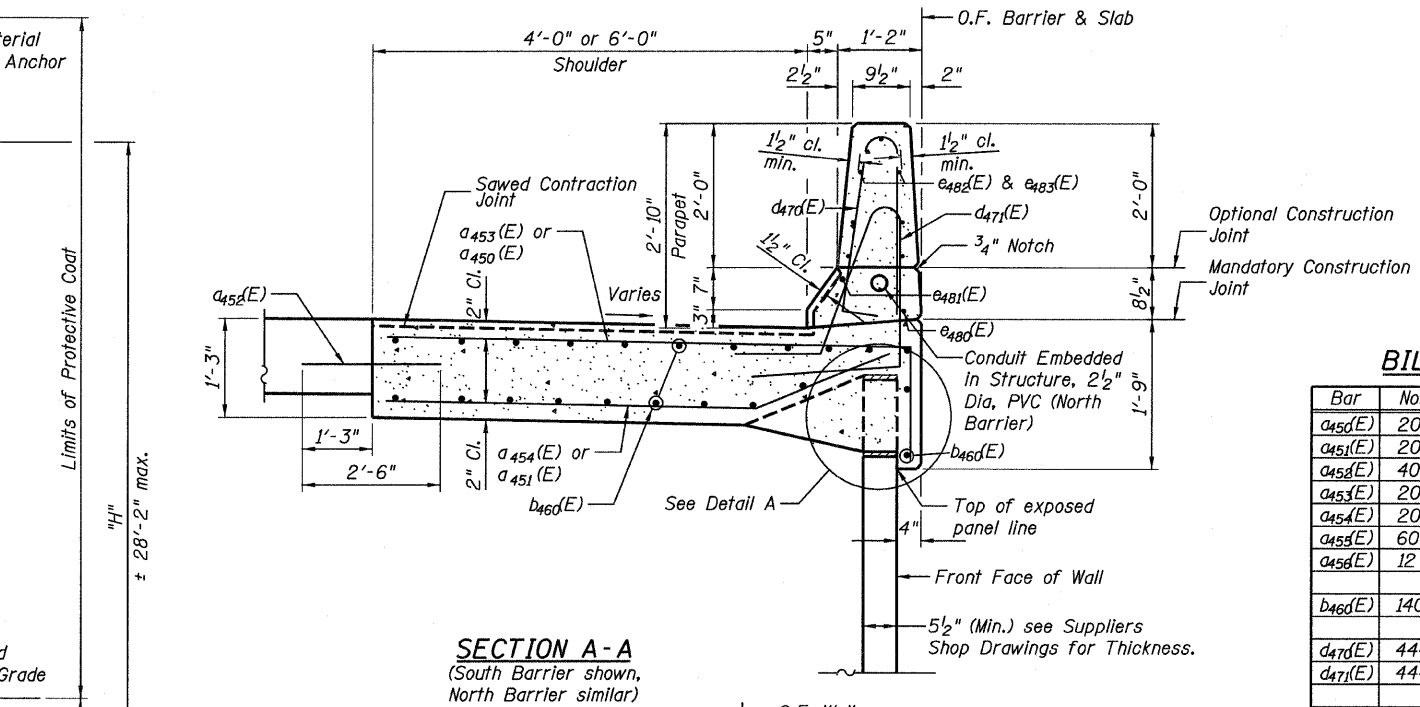
BAR a450(E)



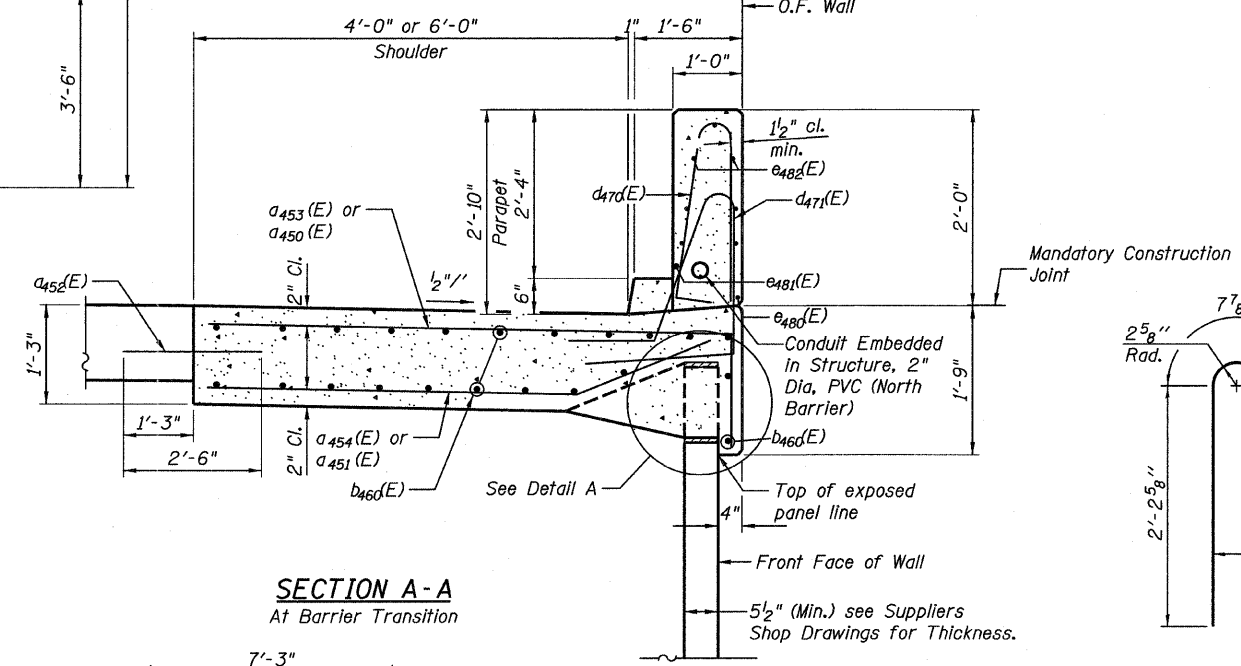
BAR a451(E)



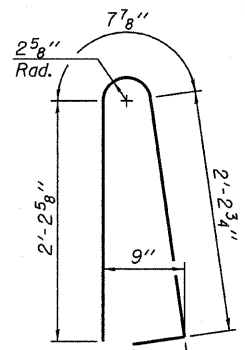
BAR a454(E)



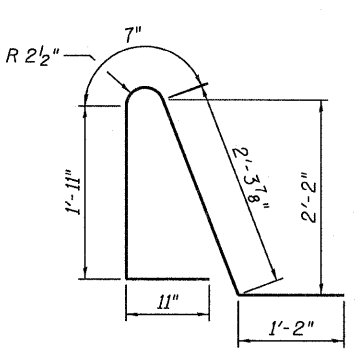
SECTION A-A  
(South Barrier shown,  
North Barrier similar)



SECTION A-A  
At Barrier Transition



BAR d470(E)



BAR d471(E)

RAMP 4 MOMENT SLAB  
SECTIONS AND BAR LIST  
STRUCTURE NO. 016-1307

Note:  
1. See electrical drawings for conduit details and payment information.  
2. In Typical Cross Section, See Roadway plans for payment of Stabilized Subbase, Aggregate Subbase and Embankment.

BILL OF MATERIAL

Bar	No.	Size	Length	Shape
a450(E)	203	#6	8'-8"	—
a451(E)	203	#6	7'-5"	—
a452(E)	406	#6	2'-6"	—
a453(E)	203	#6	6'-8"	—
a454(E)	203	#6	5'-5"	—
a455(E)	60	#6	5'-6"	—
a456(E)	12	#6	4'-6"	—
b460(E)	140	#4	31'-2"	—
d470(E)	444	#5	5'-7"	∧
d471(E)	444	#5	6'-11"	∧
e480(E)	16	#4	27'-3"	—
e481(E)	16	#8	30'-4"	—
e482(E)	168	#4	14'-8"	—
e483(E)	28	#4	11'-2"	—
Reinforcement Bars, Epoxy Coated		Pound	22,850	
Concrete Superstructure		Cu. Yds.	183.8	

Bars indicated thus 1 x 15-#5 etc. indicates 1 line of bars with 15 lengths per line.

TYLIN INTERNATIONAL

DESIGNED	EKH	REVISIONS	
CHECKED	AMD,MMB	NAME	DATE
DRAWN	EKH		
CHECKED	AMD,MMB		
DATE	03/25/2011		

SHEET NO. 6	F.A.I. RTE.	SECTION	COUNTY	TOTAL SHEETS	SHEET NO.
	55	0711.2R & 1011.1BR	COOK	741	598
11 SHEETS	CONTRACT NO. 60999				
FED. ROAD DIST. NO. 1 ILLINOIS FED. AID PROJECT					

4/28/2011 2:13:58 PM p:\01345\structure\2 Central Ave. 016-0724\155-4\moms\lab3.dgn