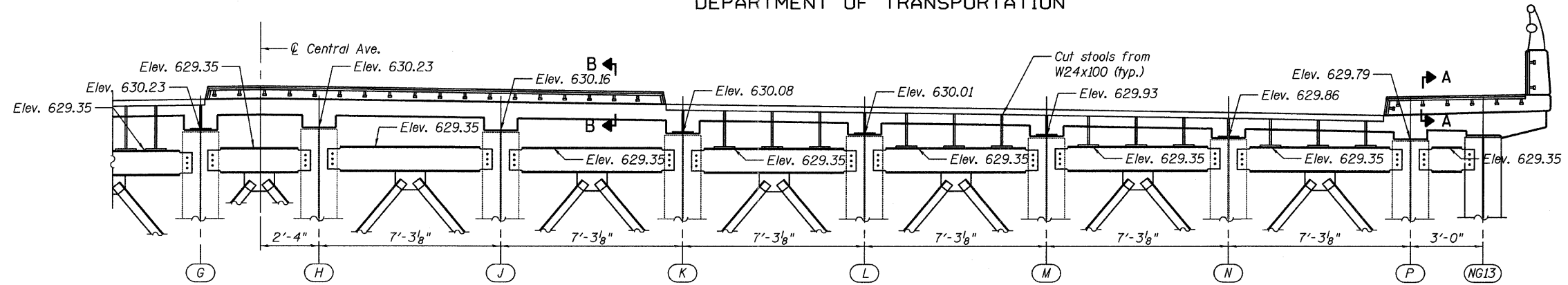
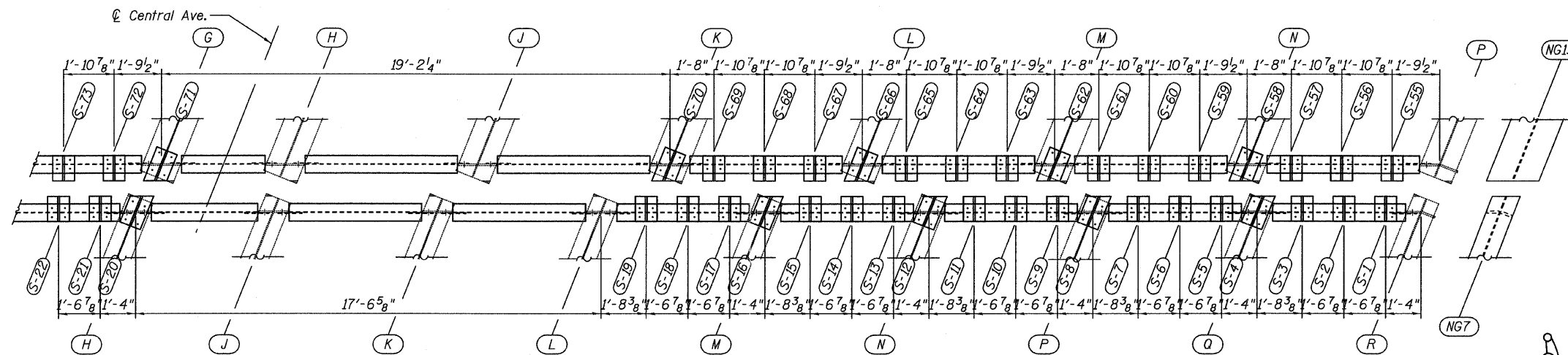


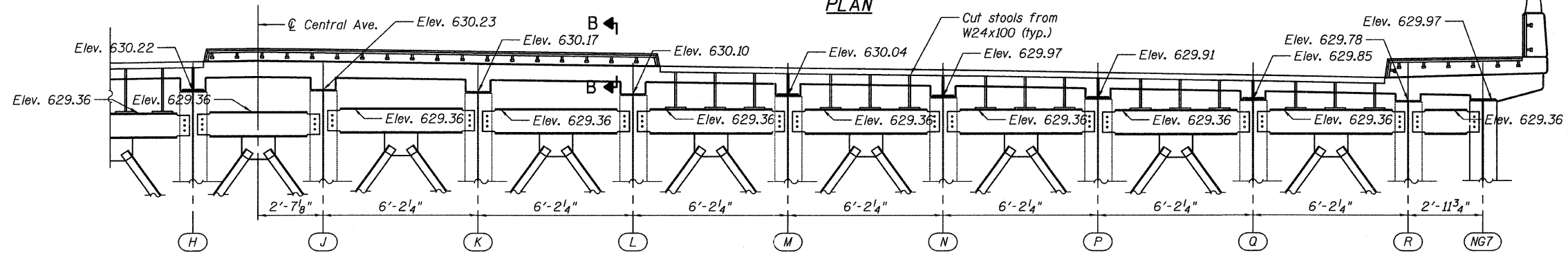
STATE OF ILLINOIS  
DEPARTMENT OF TRANSPORTATION



**CROSS FRAME DIAPHRAGMS AT PIER 9**  
(Span 14, Looking North)



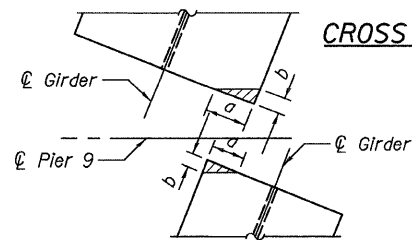
**PLAN**



**CROSS FRAME DIAPHRAGMS AT PIER 9**  
(Span 13, Looking North)

**BEAM CLIPPING DIMENSIONS**

Girder	Span	a	b
A thru R	11 thru 13	3 3/4"	1 1/2"
A thru P	14 thru 15	4 1/2"	1 3/4"



**BEAM CLIPPING DIAGRAM**

**NOTES:**

1. For Section A-A and B-B see sheet 32.
2. Holes in new cross frame connection plates are to be field drilled using the holes in the existing connection as a template.
3. According to existing plans, the end cross frame is level.
4. The ends of the proposed girders are cut parallel to the skew.

**FINGER PLATE PLAN &  
SECTIONS - EAST  
STRUCTURE NO. 016-3240**

**TYLIN INTERNATIONAL**

DESIGNED	BY	LS	REVISIONS	
CHECKED	BY	LS	NAME	DATE
DRAWN	BY	LS		
CHECKED	BY	LS		
DATE				

SHEET NO. 29	F.A.I. RTE.	SECTION	COUNTY	TOTAL SHEETS	SHEET NO.
	73 SHEETS	55	0711.2R & 1011.1BR	COOK	741 632
			CONTRACT NO. 60999		
			FED. ROAD DIST. NO. 1   ILLINOIS FED. AID PROJECT		

4/28/2011 2:27:37 PM p:\01345\structure\03 North Approach\_016-3240\15563f\_insr-east.dgn