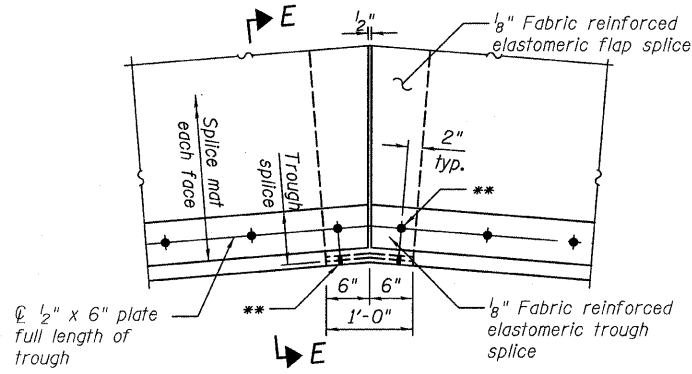
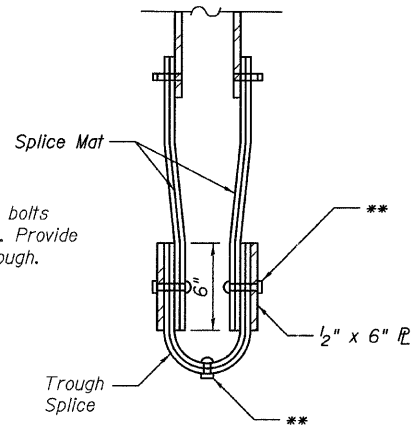


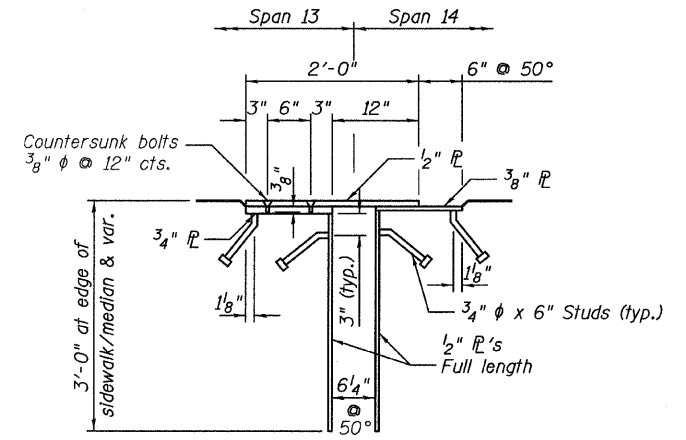
STATE OF ILLINOIS
DEPARTMENT OF TRANSPORTATION



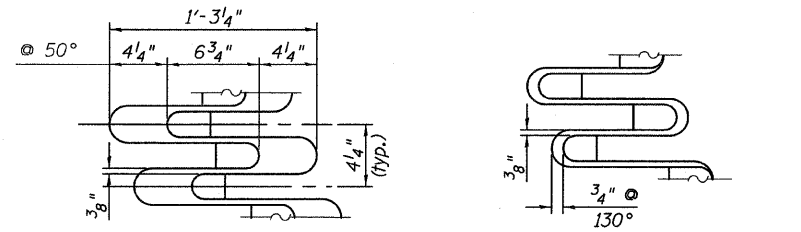
TROUGH SPLICE DETAIL



SECTION E-E



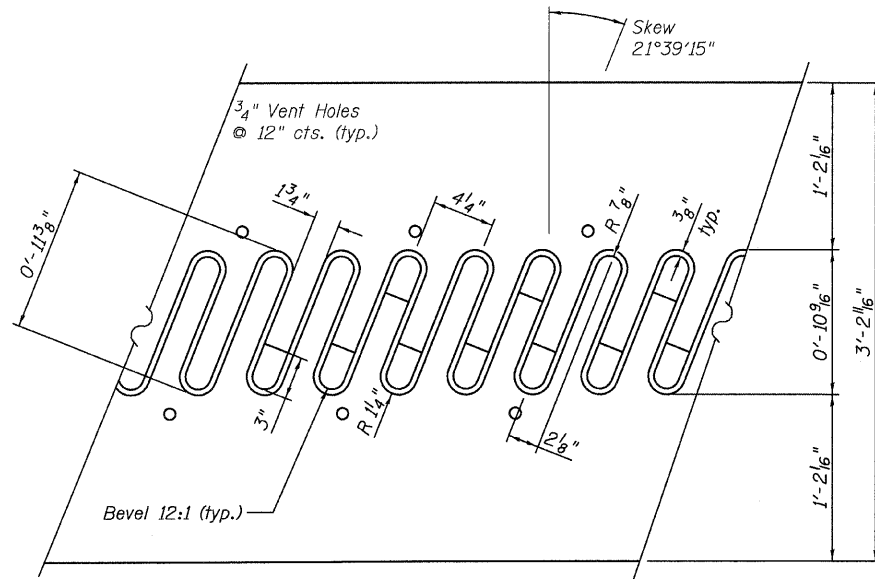
**SECTION A-A & B-B
SIDEWALK/MEDIAN PLATE ASSEMBLY DETAIL**



AT NORMAL TEMPERATURE AT 130° F POSITION

FINGER PLATE DETAILS

Temperature Range = -30° to 130°
with 50° = Normal
Coeff. of Linear Expansion = 0.0000065/° F



FLAME CUTTING DIAGRAM

Cut from $2\frac{1}{4} \times 3'-2\frac{1}{16} \times 57'-8\frac{1}{16}$ for West Side
& $2\frac{1}{4} \times 3'-2\frac{1}{16} \times 31'-4\frac{5}{16}$ for East Side

NOTES

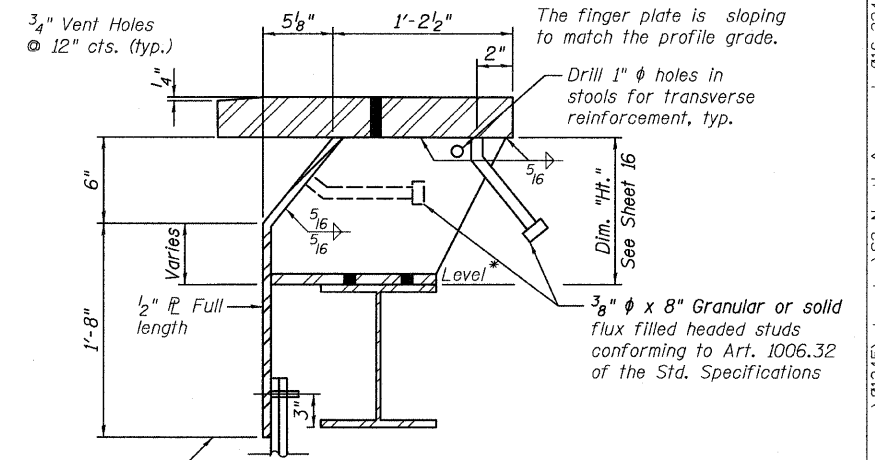
1. For stool locations, see sheet 29 & 30.
2. See sheets 44 & 45 for cross frame details.
3. Finger plate expansion joints shall be assembled in their final relative position with the ends in place for shop inspection and acceptance.
4. M 270 Grade 50 steel shall be used for the finger plates and attachments.
5. Steel members for the finger plate expansion joint including 1/2 inch shim, two 1/4 inch shims, one 1/8 inch and one 1/16 inch for height adjustments are furnished under a separate contract. Installation of these items is included in the cost of "Finger Plate Expansion Joint, 6" (Erect Only).

LEGEND

E.S. - Denotes Each Side
F.F. - Denotes Front Face

BILL OF MATERIAL

ITEM	UNIT	TOTAL
Finger Plate Expansion Joint, 6" (Erect Only)	FOOT	116.0



STOOL DETAIL

**FINGER PLATE
DETAILS 2
STRUCTURE NO. 016-3240**

TYLIN INTERNATIONAL	DESIGNED - DY, LS	REVISIONS		SHEET NO. 32	F.A.I. RTE.	SECTION	COUNTY	TOTAL SHEETS	SHEET NO.	
	CHECKED - AMD, LS	NAME	DATE		55	0711.2R & 1011.1BR	COOK	741	635	
	DRAWN - DY, LS				CONTRACT NO. 60999					
	CHECKED - AMD, LS				FED. ROAD DIST. NO. 1 ILLINOIS FED. AID PROJECT					
	DATE - 03/25/2011				4/28/2011					

pi:\01345\structure\016-3240\156e3finger2.dgn 2:27:41 PM